

BIXMILL TRACT

BEING A SUBDIVISION OF PORTIONS OF LOTS 6, 7 & 8 AND OF SECTIONS 35 & 36, T 2 S, R 6 W, S B B M. AS PER MAP SHOWING A SUBDIVISION OF RANCHO LA SIERRA RECORDED IN BOOK 6 PAGE 70 OF MAPS, RECORDS OF RIVERSIDE COUNTY, CALIFORNIA
SCALE - 1" = 200'

We hereby certify that we are the owners of or interested in the land included within the subdivision shown on the annexed map and that we are the only persons whose consent is necessary to pass a clear title to said land and we consent to the making of said map and subdivision as shown within the colored border line. We hereby dedicate to the public use all the avenues shown within said subdivision, designated as Lots A, B, C, D, E, F, G, H, J, K, L, M, N and O.

Security Trust & Savings Bank
By *J. C. Catalano* Vice-President
J. R. Cook President
J. J. Johnson Assistant Secretary
J. J. Johnson Secretary
State of California
County of Los Angeles

RESOLVED That the within map be, and hereby is adopted as the official map of BIXMILL TRACT and that the avenues as shown on said map are hereby rejected as public streets and that the County Clerk is hereby authorized and directed to attest said map by signing his name thereto as County Clerk for and in behalf of the County and to affix the seal of said County thereto.

I hereby certify that the foregoing resolution was adopted by the Board of Supervisors of the County of Riverside this 21st day of October 1927

J. G. Clifton County Clerk
J. J. Johnson Deputy County Clerk

I hereby certify that a bond has been filed with and accepted by the Board of Supervisors guaranteeing the payment of taxes now a lien but not yet payable, as required by Chapter 306, Acts 1913.

Dated 1927

County Clerk

Deputy County Clerk

On this 30th day of September in the year one thousand nine hundred and twenty-seven before me F. M. Ranney a Notary Public in and for County of Los Angeles, State of California, personally appeared S. E. Hatch known to me to be Vice-President and C. C. Johnson known to me to be Assistant Secretary of the Security Trust and Savings Bank, the corporation which executed the within instrument and acknowledged to me that they executed the within instrument for such corporation. In witness whereof I have hereunto set my hand and affixed my official seal the day and year in this certificate first above written

F. M. Ranney
Notary Public in and for County of Los Angeles, State of California

State of California
County of Riverside

On this 1st day of Oct in the year one thousand nine hundred and twenty-seven, before me

S. C. Kenneth a Notary Public in and for County of Riverside, State of California, personally appeared J. B. Cook known to me to be President and Gladys Lewis known to me to be Secretary of the Arlington Mutual Water Company the corporation which executed the within instrument for such corporation. In witness whereof I have hereunto set my hand and affixed my official seal the day and year in this certificate first above written

S. C. Kenneth
Notary Public in and for County of Riverside, State of California

I hereby certify that there are no liens for unpaid taxes against any portion of the subdivision shown by this map, except taxes now assessed but not yet payable

Oct 22, 1927 - *F. E. Wagner*
By *K. C. Sibley* Deputy
Approved this 24th day of October, 1927
W. C. Sullivan
County Surveyor

Approved this 5th day of Oct. 1927.
H. P. Kelly
County Assessor

Approved by Riverside City Planning Commission at its meeting held October 25, 1927

W. K. Lewis
Secretary

The bearings shown on this map were determined by solar observation

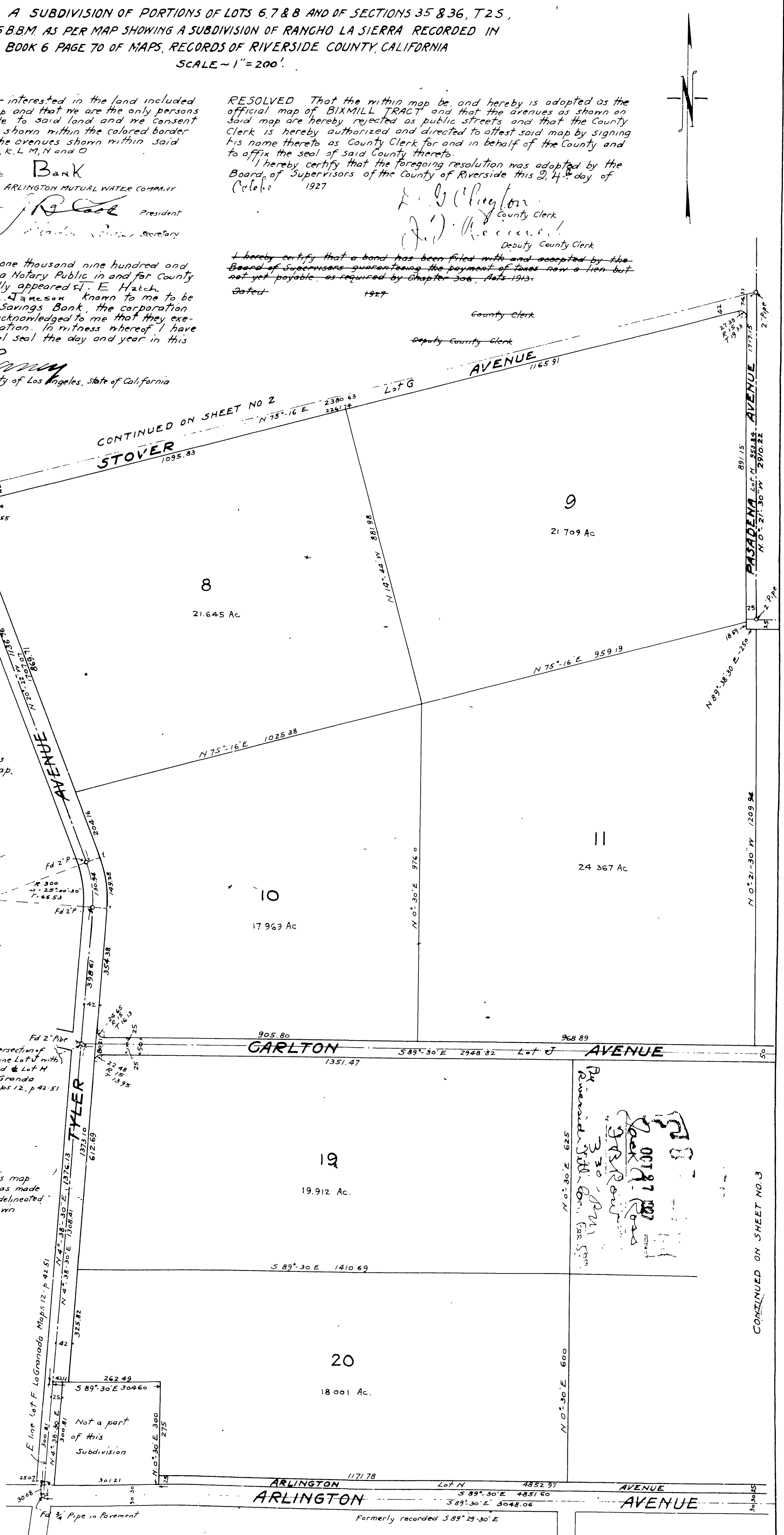
Dimensions shown on this map are in feet and decimals thereof

2" x 2" x 15 RW stakes were set at all corners not otherwise shown

Acreage shown on this map is net and does not include the street adjoining

I hereby certify that I am a civil engineer and that this map consisting of three sheets correctly represents a survey as made by me in September 1927 and that all the monuments delineated thereon actually exist and their positions are correctly shown

A. E. Keller



CONTINUED ON SHEET NO 2

AVENUE 1165.91

STOVER 1095.83

9

21 709 Ac.

8

21.645 Ac.

11

24 367 Ac.

10

17 969 Ac.

19

19.912 Ac.

20

18 001 Ac.

GARLTON 1351.47

AVENUE 968.89

TYLER 612.69

ARLINGTON 1171.78

ARLINGTON 4852.97

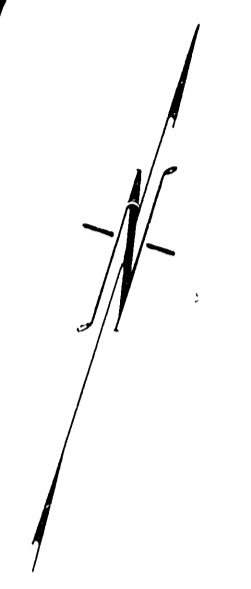
ARLINGTON 4851.60

Formerly recorded S 89° 29' 30" E

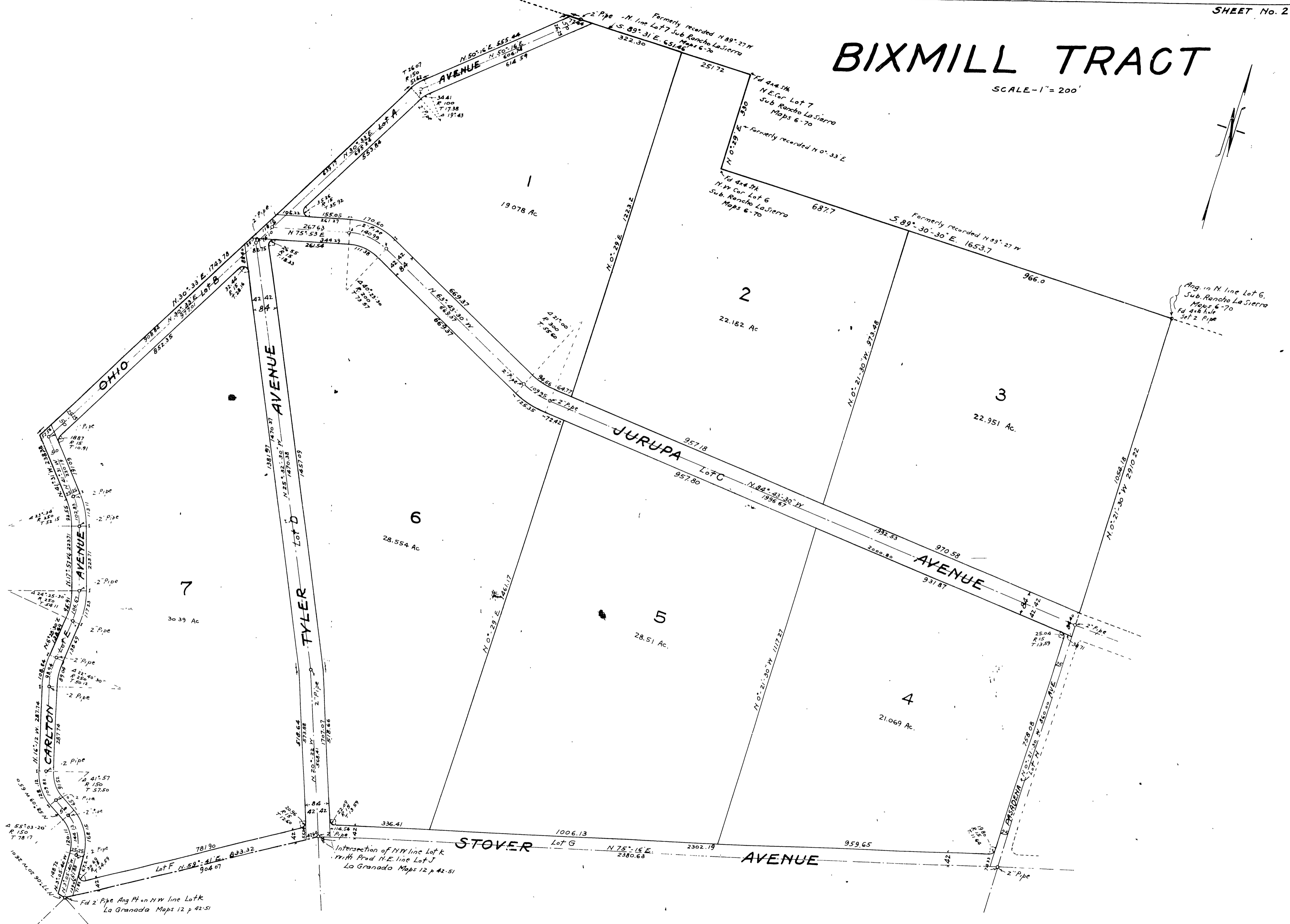
CONTINUED ON SHEET NO. 3

BIXMILL TRACT

SCALE - 1" = 200'



M.B. 16/29



CONTINUED ON SHEET No. 1

M.B. 16/29

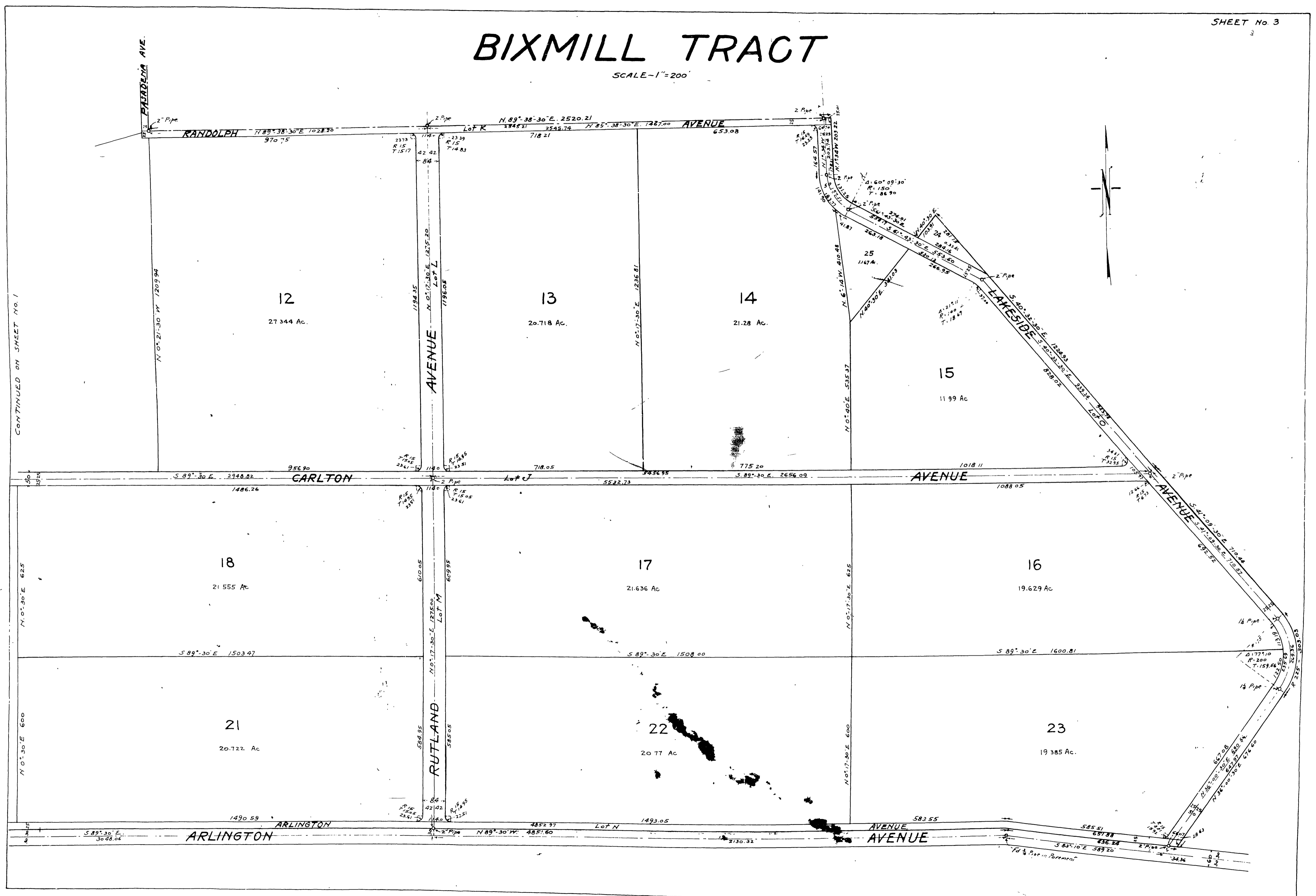
BOOK 1

BIXMILL TRACT

SCALE - 1" = 200'

CONTINUED ON SHEET No. 1

M.B. 16/30



M.B. 16/30