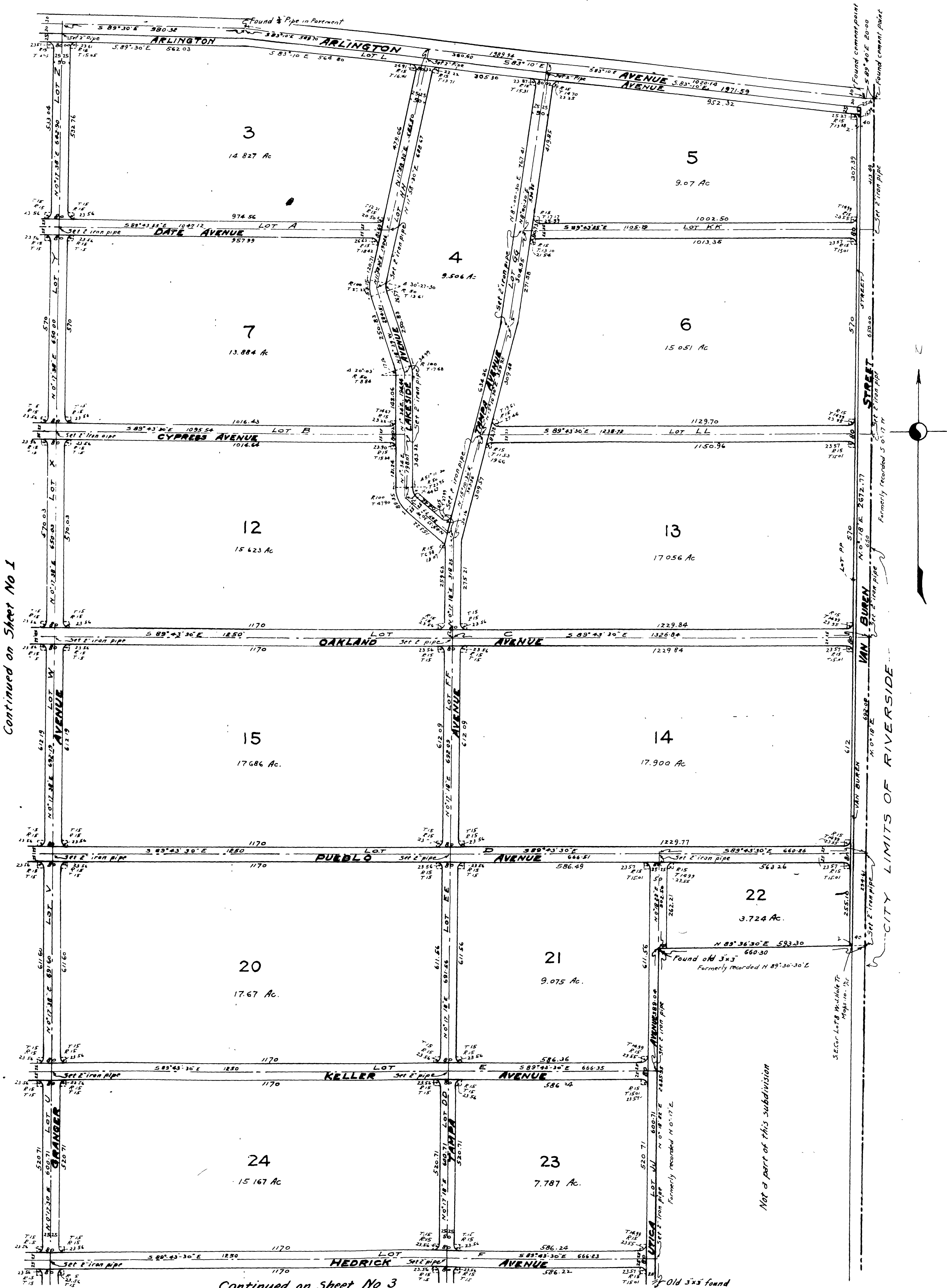


ALCAZAR

Scale: 1" = 200'

Book 1



Continued on Sheet No 1

Continued on Sheet No 3

Not a part of this subdivision

16/32

Book 1

ALCAZAR

BEING A SUBDIVISION OF THE WHOLE OF LOTS 5, 6, 7, 8, 9, 10, 19, 20, 21, 22 AND PORTIONS OF LOTS 4, 11, 18, 23, 24 AND C OF THE W.J. HOLE TRACT RECORDED IN MAP BOOK 10, PAGES 12-15, RECORDS OF RIVERSIDE COUNTY, STATE OF CALIFORNIA, ALSO PORTIONS OF SECTIONS 35 AND 36 T. 2 S., R. 6 W. S. B. B. M. RECORDED IN MAP BOOK 6, PAGE 70, RECORDS OF RIVERSIDE COUNTY, STATE OF CALIFORNIA

The bearings shown on this map were determined by solar observation.
2"x2"-18" R.W. stakes were set at all corners not otherwise shown.

Acres shown on this map is net and does not include the street adjoining.

Dimensions shown on this map are in feet and decimals thereof.

RESOLVED: That the within map be, and hereby is, adopted as the official map of ALCAZAR and that the avenues as shown on said map are hereby rejected as public streets, and that the County Clerk is hereby authorized, and directed, to attest said map by signing his name thereto as County Clerk for and in behalf of the County, and to affix the seal of said County thereto.

I hereby certify that the foregoing resolution was adopted by the Board of Supervisors of the County of Riverside this 24th day of Oct. 1927

D. G. Clayton
County Clerk

J. J. Reimer
Deputy County Clerk

Approved, this 24th day of October, 1927

[Signature]
County Surveyor

I hereby certify that a bond has been filed with, and accepted by, the Board of Supervisors guaranteeing the payment of taxes now a lien but not yet payable, as required by Chapter 306, Acts 1913.

Dated: 1927

County Clerk

Deputy County Clerk

Approved, this 17th day of October 1927

[Signature]
County Assessor

I hereby certify that there are no liens for unpaid taxes against any portion of the subdivision shown by this map, except taxes now assessed but not yet payable.

Dated: Oct. 22nd 1927

[Signature]
County Auditor
By *[Signature]*
Deputy

I HEREBY CERTIFY THAT I AM A CIVIL ENGINEER AND THAT THIS MAP CONSISTING OF FOUR SHEETS CORRECTLY REPRESENTS A SURVEY MADE UNDER MY SUPERVISION OCT. 1924 AND OCT. 1927, AND THAT ALL MONUMENTS SHOWN HEREON ACTUALLY EXIST AND THEIR POSITIONS ARE CORRECTLY SHOWN.

[Signature]

WE HEREBY CERTIFY THAT WE ARE THE OWNERS OF OR INTERESTED IN THE LAND INCLUDED WITHIN THE SUBDIVISION SHOWN ON THE ANNEXED MAP AND THAT WE ARE THE ONLY PERSONS WHOSE CONSENT IS NECESSARY TO PASS A CLEAR TITLE TO SAID LAND AND WE CONSENT TO THE MAKING OF SAID MAP AND SUBDIVISION AS SHOWN WITHIN THE COLORED BORDER LINE. WE HEREBY DEDICATE TO THE PUBLIC USE ALL THE AVENUES DESIGNATED AS LOTS A, B, C, D, E, F, G, H, I, M, N, O, P, Q, R, S, T, U, V, W, X, Y, Z, AA, BB, CC, DD, EE, FF, GG, HH, JJ, KK, LL, AND PP WITHIN SAID SUBDIVISION.

Security Trust & Savings Bank
By *[Signature]*
Vice-President
By *[Signature]*
Assistant Secretary

STATE OF CALIFORNIA
County of Los Angeles
On this 30th day of September, 1927, in the year one thousand, nine hundred and Twenty Seven, before me F. M. Raney, a Notary Public in and for County of Los Angeles, State of California, personally appeared J. E. Harsh known to me to be Vice-President and C. S. Jameson known to me to be Assistant Secretary of the Security Trust & Savings Bank, the Corporation which executed the within instrument and acknowledged to me that they executed the within instrument for such Corporation. In witness whereof I have hereunto set my hand and affixed my official seal, the day and year in this certificate first above written.
Notary Public in and for County of Los Angeles, State of California.

Approved by Riverside City Planning Commission at its meeting held October 3, 1927

W. K. Lewis
Secretary

16/34