

2017

FILED
8-13-1942
1:30 P.M.
Fee \$5.00
Request: Best, Best
Gabbert

AMENDED MAP OF RIVERSIDE INDUSTRIAL DEVELOPMENT PROJECT-M^cNEW TRACT

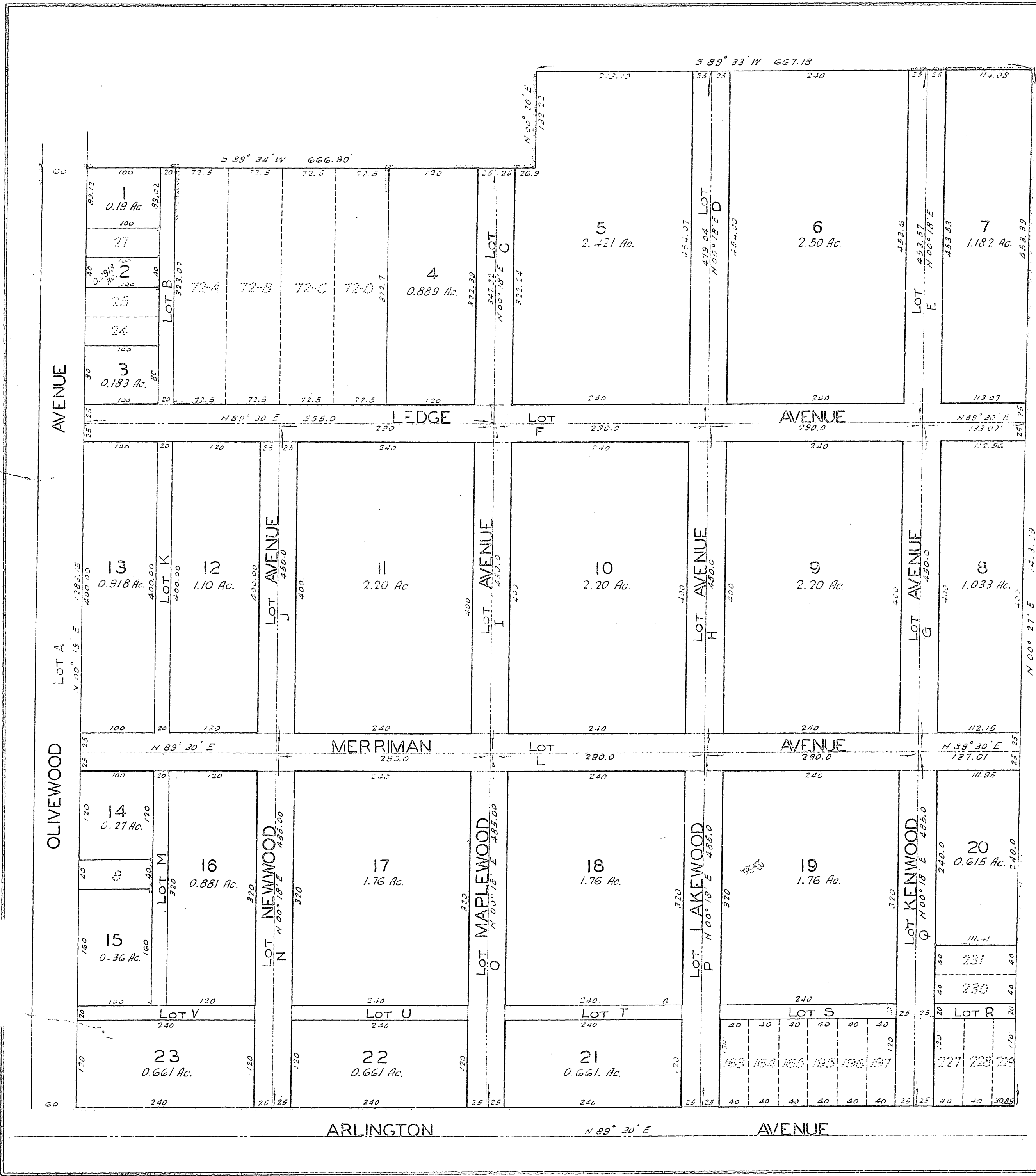
Being Reversion to Acreage of Lots 1 to 258 incl. as shown on a map of the Riverside Industrial Development Project - M^cNew Tract filed in Book 12 of Maps at page 18 thereof, Records of Riverside County, California Excepting from said Reversion to Acreage Lots 8, 24, 25, 27, 72A, 72B, 72C, 72D, 163, 164, 165, 195, 196, 197, 227, 228, 229, 230, 231, also, Lots A, B, C, D, E, F, G, H, I, J, K, L, M, N, O, P, Q, R, S, T, U, V all as shown on said map of Riverside Industrial Development Project - M^cNew Tract, MB. 12 pg. 18

J. F. DAVIDSON, Engineer

Scale 1"=100'

June 1942.

Map



Examined and approved - June 15, 1942

W. C. Johnson
County Surveyor