

FILED

AUG 10 1946

Alvin Kellon  
by Riverside Title Co.  
9:30 A.M.  
Fee - \$5.00

# LORENZ SUBDIVISION

BEING A SUBDIVISION OF A PORTION OF LOT 6 BLOCK 61 TRACT No. 2 OF LA SIERRA HEIGHTS AS SHOWN ON MAP ON FILE IN BOOK 7 PAGE 66 OF MAPS, RECORDS OF RIVERSIDE COUNTY CALIFORNIA

SCALE - 1" = 80'

We hereby certify that we are the owners of or have some right, title or interest in the real property included in the subdivision shown on this map, that we are the only persons whose consent is necessary to pass a clear title to the said property and we hereby consent to the making and recording of such map and subdivision as shown within the colored boundary line. We hereby dedicate to public use Lots A and B for street purposes and the 5 Ft. Public Utility Easement for construction and maintenance of Public Utilities.

Samuel Lorenz  
Notary Public

The County of Riverside, State of California, by and through its duly authorized officers hereby approves this final map as the official map of Lorenz Subdivision; the streets designated hereon as Lots A and B being not accepted as public streets, and the five foot Public Utility Easement being accepted as such on behalf of the public.

County of Riverside, State of California.  
by Chadwick  
Chairman, Board of Supervisors.  
County Clerk and Ex Officio  
Clerk of Board of Supervisors  
by W. Elvick Deputy Date AUG. 5, 1946.

State of California }  
County of Riverside } ss  
On this 5th day of August 1946 before me a Notary Public in and for the County of Riverside, State of California, residing therein, duly commissioned and sworn personally appeared Samuel J. Lorenz and Hazel Lorenz known to me to be the persons whose names are subscribed to the within instrument, and that they acknowledged to me that they executed the same.  
In witness whereof I have hereunto set my hand and affixed my official seal the day and year in this certificate first above written

Notary Public in and for County of Riverside  
State of California

I, Albert E. Keller do hereby certify that I am a registered Civil Engineer of the State of California, that this map consisting of one sheet correctly represents a survey made under my supervision in February 1946, that all monuments shown hereon actually exist, and that their positions are correctly shown.

Dated May 8, 1946.  
Albert E. Keller  
Registered Civil Engineer No. 1369

I hereby certify that a bond in the sum of \$85.00 has been executed and filed with the Board of Supervisors of the County of Riverside, State of California conditioned upon the payment of all taxes, State and County, and all special assessments collected as taxes, which at the time of filing of the annexed map with the County Recorder are a lien against said property, but not payable, and said bond has been duly approved by the said Board of Supervisors.

Gordon A. Pequegnat  
County Clerk and Ex Officio  
Clerk of the Board of Supervisors  
by W. Elvick Deputy

I hereby certify that according to the records of this office as of this date there are no liens against the real property shown upon the annexed map for unpaid State, County or local taxes or special assessments collected as taxes except taxes or special assessments not yet payable which are estimated as \$85.00

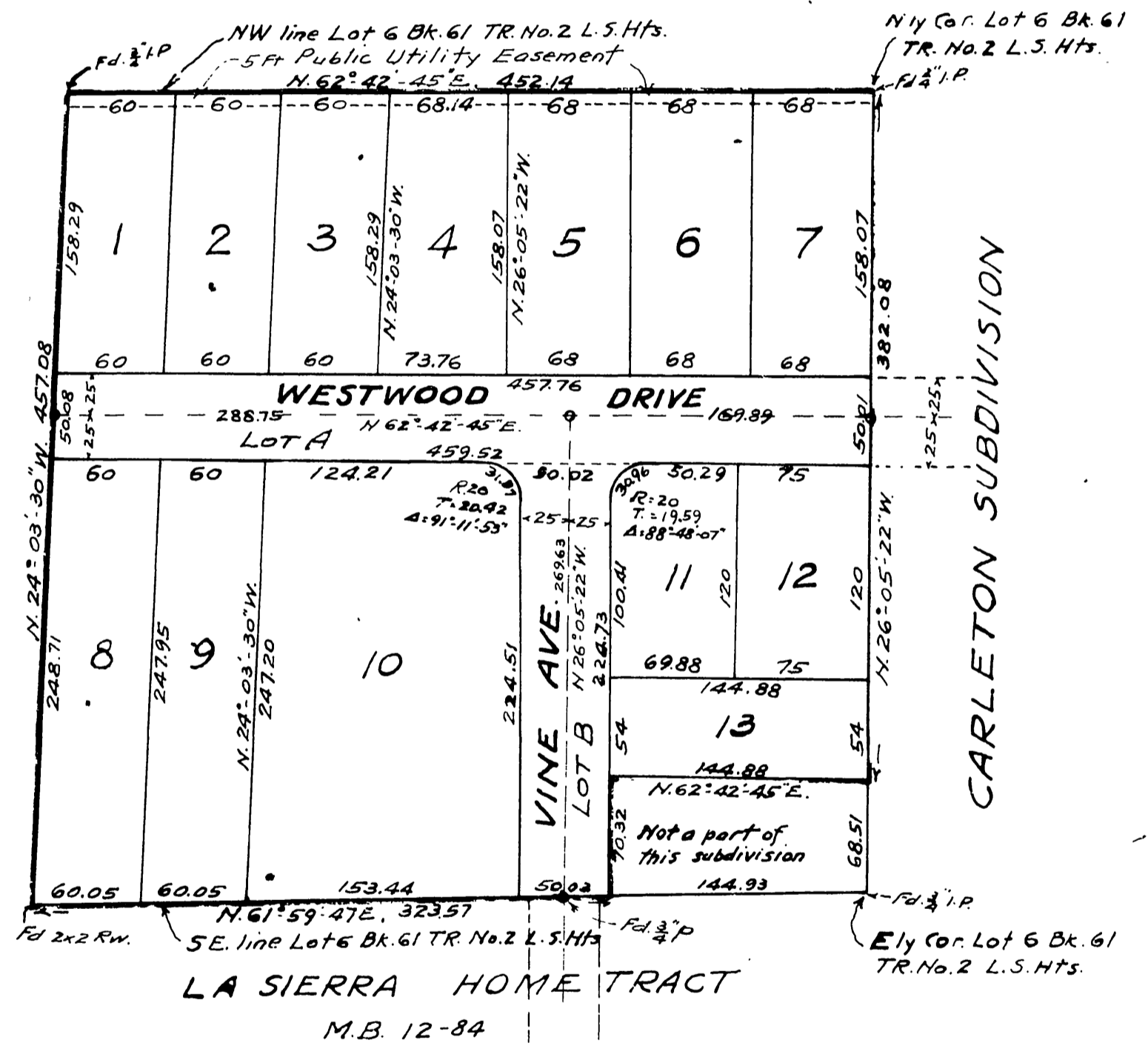
Dated this 5th day of Aug. 1946  
Auditor County of Riverside, State of California  
by R. J. Kuck Deputy

Approved by the Riverside County Planning Commission in accordance with the requirements of law in duly authorized meeting held July 30, 1946.

Hazel J. Evensen  
Secretary

I hereby certify that I have examined the annexed map, that the subdivision shown thereon is substantially the same as it appeared on the tentative map and approved alterations thereof, that all provisions of Chapter 128 (Subdivision Map Act) State of California 1943 and Riverside County Ordinance No. 200 have been complied with and I am satisfied that this map is technically correct.

Date July 8, 1946  
A. C. Keith  
County Surveyor Riverside County



ENGINEER'S NOTES  
Bearings are based on the northerly line of Lot 6 Bk. 61 Tr. No. 2 of La Sierra Heights as shown on recorded map.  
Distances are in feet and decimals of a foot.  
3/4 inch iron pipe were set at each lot corner.  
O indicates 3/4 inch iron pipe monuments.