

FILED

at 1:00 P.M.

SEP 23 1946

Jack A. Ross

County Recorder

O.A. Kiser

Fee \$5.00

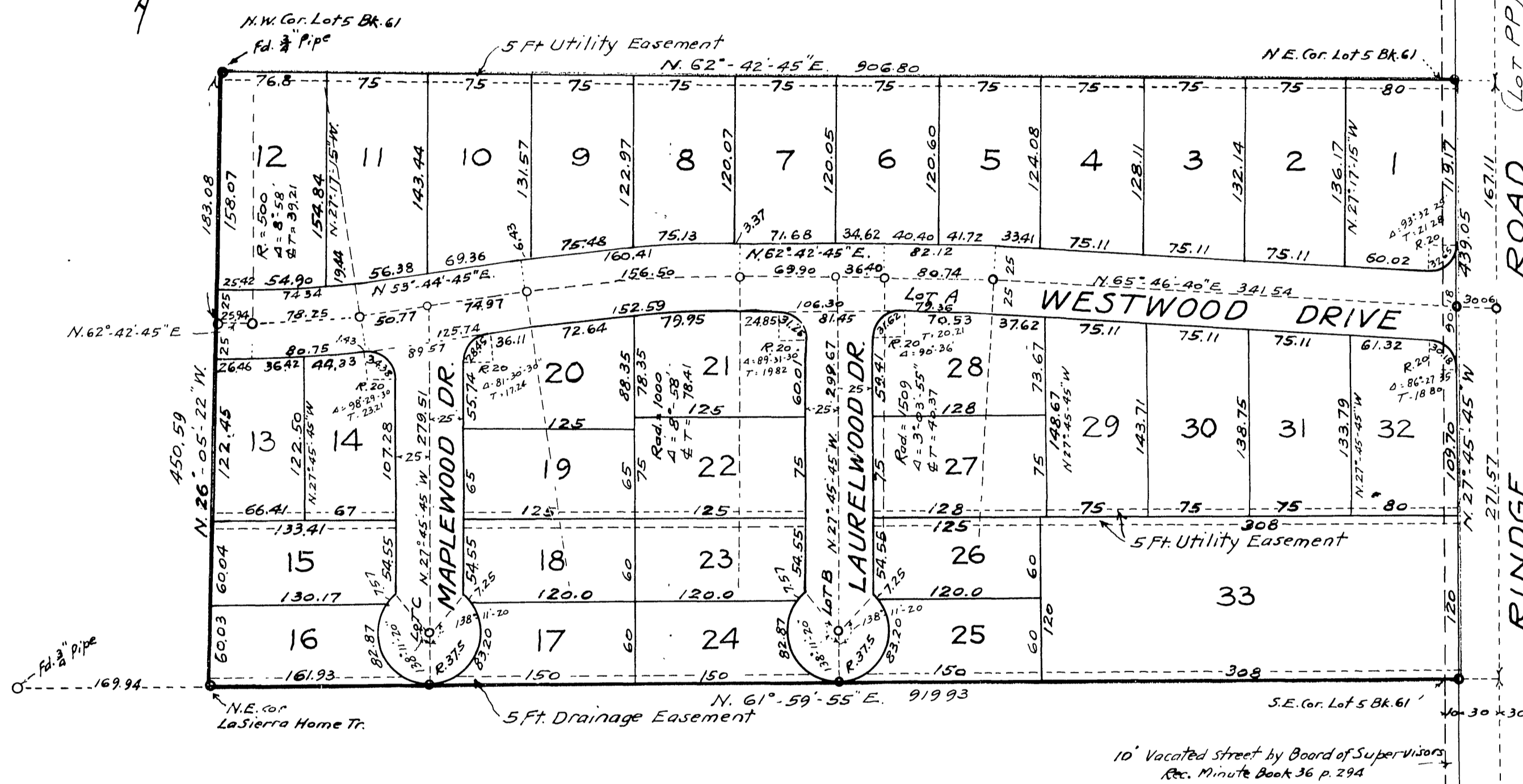
Filed by

Riverside Title Co.

GARLETON SUBDIVISION

BEING A SUBDIVISION OF LOT 5 BLOCK 61 TRACT NO. 2 OF LA SIERRA HEIGHTS AS SHOWN ON MAP ON FILE IN BOOK 7 PAGE 66 OF MAPS, RECORDS OF RIVERSIDE COUNTY CALIFORNIA

A.E. KELLER CIVIL ENGINEER JAN. 1946
SCALE - 1" = 80'



Engineer's Note - Bearings are based on the center line of Rindge Road (Lot PP) as shown on recorded map of Tract No. 2 of La Sierra Heights. Distances are expressed in feet and decimals of a foot. O indicates 3/4" iron pipe monuments found or set as noted 2" x 2" Redwood stakes are set at each lot corner.

Approved by the Riverside County Planning Commission, in accordance with the requirements of law, in duly authorized meeting held 27 August 1946

Harold J. Evensen Secretary.

I hereby certify that a bond in the sum of \$2000.00 has been executed and filed with the Board of Supervisors of the County of Riverside, State of California conditioned upon the payment of all taxes, State, County, Municipal or local, and all special assessments collected as taxes which at the time of filing of the annexed map with the County Recorder are a lien against said property but not yet payable and said bond has been duly approved by said Board of Supervisors. Dated this 3 day of SEPT. 1946

By Jack A. Bergin Deputy
GORDON A. PEQUEGNAT
County Clerk and Ex-officio Clerk of the Board of Supervisors.

The County of Riverside, State of California, by and through its duly authorized officers hereby approves this final map as the official map of Garleton Subdivision, the streets designated thereon as lots A, B and C being not accepted as public streets, and the five foot public utility easements being accepted as such on behalf of the public.

County of Riverside, State of California

by Robert S. Dillon
Chairman of Board of Supervisors

Attest G.A. PEQUEGNAT
County Clerk and Ex-officio Clerk
of the Board of Supervisors
BY Jack A. Bergin
DEPUTY

I hereby certify that according to the records of this office, of this date there are no liens against the property shown on this map for unpaid State, County or local taxes or special assessments collected as taxes except taxes and special assessments now a lien but not yet payable which are estimated at \$200.00 Dated this 3 day of SEPT 1946

R. J. Hyde
County Auditor of the County of Riverside, State of California

We hereby certify that we are the owners of, or have some right, title or interest in the real property included in the subdivision shown on this map, that we are the only persons whose consents are necessary to pass a clear title to the said property and we hereby consent to the making and recording of such map and subdivision as shown within the colored boundary line. We hereby dedicate to public use Lots A, B and C for street purposes and the five foot Public Utility Easements for the construction and maintenance of public utilities.

Edna B. Carleton

State of California }
County of Riverside } ss

On this 4 day of February 1946 before me Robert W. Zickel a Notary Public in and for the County of Riverside, State of California, residing therein, duly commissioned and sworn, personally appeared Mrs. Edna B. Carleton, known to me to be the person whose name is subscribed to the within instrument and she acknowledged to me that she executed the same.

In witness whereof I have hereunto set my hand and affixed my official seal the day and year in this certificate first above written.

Robert W. Zickel
Notary Public in and for County of Riverside, State of California

I hereby certify that I am a Registered Civil Engineer of the State of California, that this map consisting of one sheet correctly represents a survey made by me in December 1945, that all monuments shown hereon actually exist and that their positions are correctly shown.

A.E. Keller
Registered Civil Engineer No. 1369

I hereby certify that I have examined the within annexed map, that the subdivision shown thereon is substantially the same as it appeared on the tentative map and approved a iterations thereof; that all provisions of Chapter 128 (Subdivision Map Act) State of California 1943 and Riverside County Ordinance No. 200 have been complied with and I am satisfied that this map is technically correct.

Date Sept. 3, 1946

A. C. Ruth
COUNTY SURVEYOR

M.B. 21/45

M.B. 21/45