

# BELVEDERE HEIGHTS

Being a Subdivision of a Portion of the S. 1/2 of the N.W. 1/4 of Section 21, T. 2 S., R. 4 W., S.B.B.+M.

April, 1947.

J. F. Davidson, Civil Engineer.

Scale: 1"=100'

## FILED

MAY 21, 1947  
No. 2867 at 9:30 AM  
Jack A. Robs  
COUNTY RECORDER  
by Alvin Waldron  
DEPUTY  
Fee \$ 5.00  
Filed by Riverside Title Co.

MB 22/31

We hereby certify that we are the owners of, or have some right, title or interest in and to the real property included within the subdivision shown on the annexed map, and that we are the only persons whose consents are necessary to pass a clear title to said property, and we consent to the making of said map and subdivision as shown within the colored border lines, and we hereby offer for dedication to public use for street purposes, Lots A to I, inclusive, and for construction and maintenance of all public utilities, the five-foot easements shown by dotted lines and designated as 5'-P.U.E.

Gas Cenatiempo Macedonia Cenatiempo

STATE OF CALIFORNIA } S.S.  
COUNTY OF RIVERSIDE }

On this 9th day of May 1947, before me the undersigned, a Notary Public in and for the County of Riverside, State of California, residing therein and duly commissioned and sworn personally appeared

Gas Cenatiempo and Macedonia Cenatiempo

known to me to be the persons whose names are subscribed to the within instrument, and they acknowledged to me that they executed the same.

IN WITNESS WHEREOF I have hereunto set my hand and affixed my official seal the day and year in this certificate first above written.

Bessie M. Vaughn

Notary Public in and for the County of Riverside, State of California.

I hereby certify that according to the records of this office as of this date, there are no liens against the property shown on the within map for unpaid State, County or local taxes or special assessments collected as taxes or special assessments collected as taxes, except taxes now a lien but not yet payable, which are estimated to be \$ 400.00.  
Dated this 9th day of May 1947.

R.T. Hicks County Auditor.

I hereby certify that a bond in the sum of \$ 400.00 has been filed with the Board of Supervisors of the County of Riverside, State of California, conditioned upon the payment of all taxes, State, County or local and all special assessments collected as taxes which at the time of filing of this map with the County Recorder are a lien against said property but not yet payable, and said bond has been duly approved by said Board of Supervisors.

by W. Albaita Deputy.

GORDON A. PEQUEGNAT, County Clerk and ex-officio Clerk of the Board of Supervisors of the County of Riverside.

The COUNTY OF RIVERSIDE, STATE OF CALIFORNIA, by and thru its duly authorized officers hereby approves this final map as the official map of "BELVEDERE HEIGHTS", the streets designated hereon as Lots A to I, inclusive, being not accepted as public streets and the five-foot public utility easements being accepted as such on behalf of the public.

COUNTY OF RIVERSIDE, STATE OF CALIFORNIA.

by W. V. Pittman Chairman of the Board of Supervisors.

ATTEST :  
GORDON A. PEQUEGNAT  
County Clerk and ex-officio Clerk of the Board of Supervisors.

by W. Albaita Deputy.

I hereby certify that I have examined the within map; that the subdivision shown hereon is substantially the same as it appeared on the tentative map and any approved alterations thereof; that all provisions of State Law and County Ordinance No. 200 have been complied with and I am satisfied that this map is technically correct.

A. C. Keith  
County Surveyor of Riverside County.

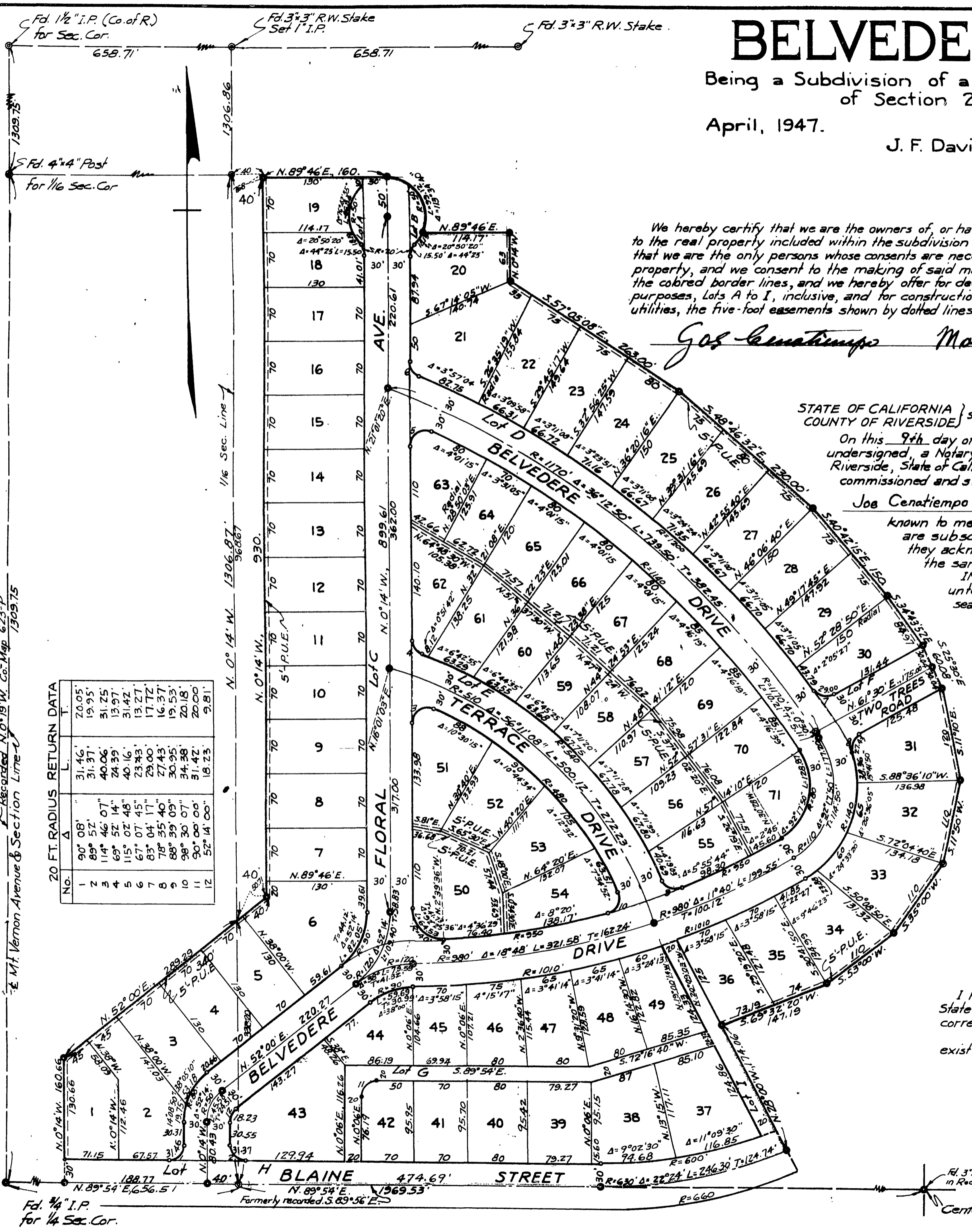
I hereby certify that I am a Registered Civil Engineer of the State of California, that this map consisting of one (1) sheet correctly represents a survey made under my supervision in 1947, that all monuments shown hereon actually exist and that their positions are correctly shown.

J. F. Davidson  
Registered Civil Engineer No. 862.

Approved by the Riverside County Planning Commission in accordance with the requirements of law in duly authorized meeting held April 29 1947.

Harold J. Evensen  
Secretary, County Planning Commission.

ENGINEER'S NOTE : -  
The Basis of bearing for this map is taken from County road survey of Mt. Vernon Ave; County Map No. 623-P.  
⊙ indicates 1/4" Iron Pipe monument set unless otherwise noted.  
2"x2" Redwood Stakes painted white set at all lot corners.



No.	Δ	L.	T.
1	90° 08'	31.46'	20.95'
2	89° 52'	31.37'	19.95'
3	114° 46' 07"	40.06'	51.25'
4	69° 52' 14"	24.39'	13.97'
5	115° 07' 48"	40.16'	31.42'
6	67° 07' 45"	23.43'	13.27'
7	83° 04' 17"	29.00'	17.72'
8	78° 35' 40"	27.43'	16.37'
9	88° 39' 09"	30.95'	19.53'
10	98° 30' 07"	34.38'	20.18'
11	52° 14' 05"	31.42'	20.00'
12	52° 14' 05"	18.75'	9.81'

MB 22/31

BOOK NO. 2