

24/14
M.B.24/14

STREETER TRACT

Being a Subdivision of Lot 18, Castleman's Addition
M.B. 3-19, Records of San Bernadino County

March 1950

Scale: 1"=100'

J.F. Davidson C.E.

FILED

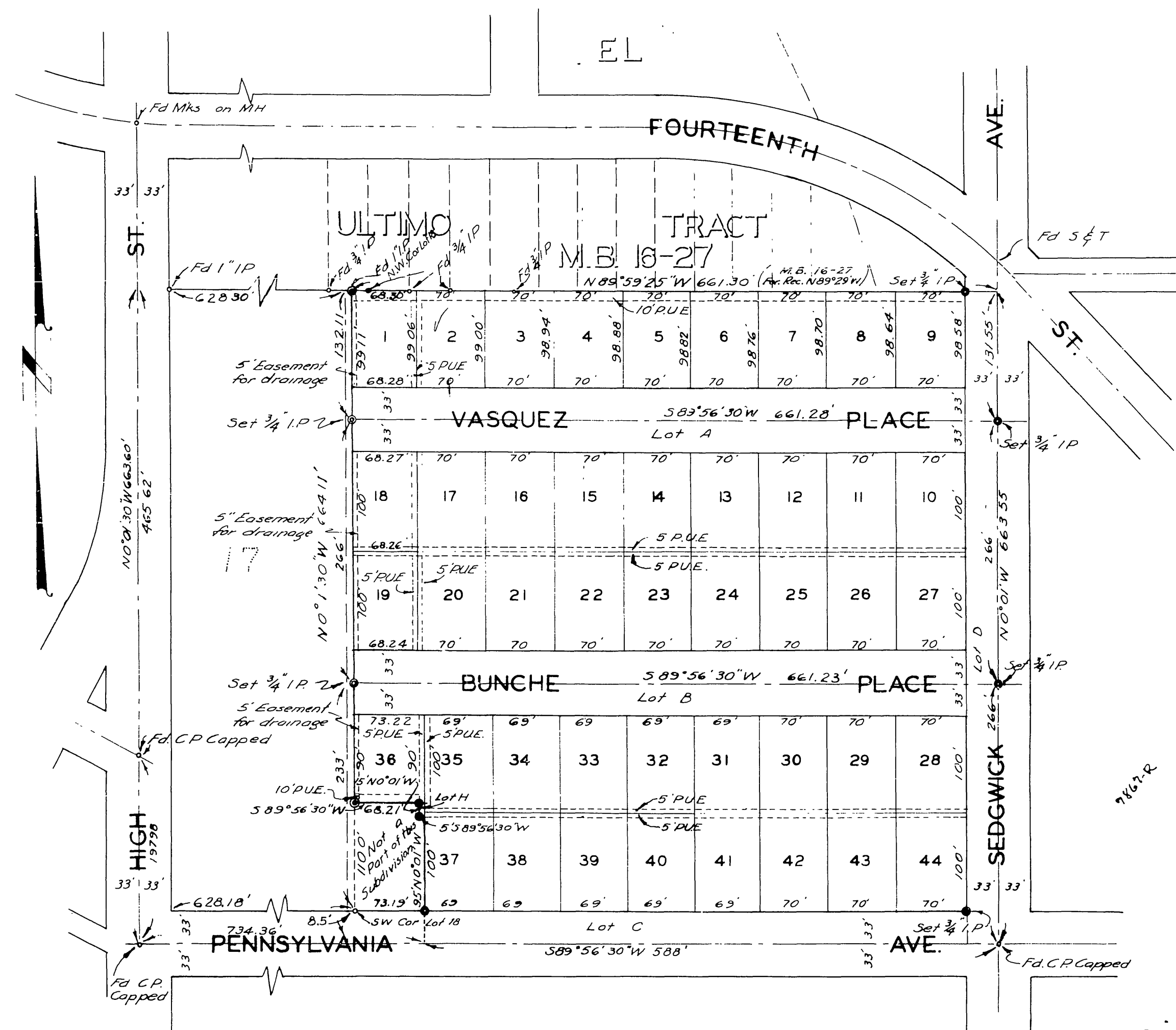
August 9, 1950
No 1781 at 9:30 A.M.

Jack A. Ross
County Recorder
by O. A. Wheat
Deputy

Fee \$ 5.00
Filed by County Clerk

NOTE:

Bearings are based on the center line of Sedgwick Avenue as shown on a map on file in the City Engineers Office, designated 1013-D
• Indicates 1/2" Iron Pipe set unless otherwise noted
◦ Indicates monuments found
Set 2" x 2" Redwood stakes at all lot corners



I hereby certify that I have examined the within map; that the Subdivision shown hereon is substantially the same as it appeared on the tentative map and any approved alterations thereof, that all provisions of Chapter 128 (Subdivision Map Act), Statutes of California, 1943, and of Ordinance No 1328 of the City of Riverside, California, and all amendments thereto, have been complied with; that plans and specifications for drains, drainage, sewer and drainage works sufficient to protect all lots in said subdivision from flood or over flow have been approved by me; that all easements for sewers and drains shown on said map are correct in form and contents and are approved; and I am satisfied that this map is technically correct.
Dated July 28, 1950.

M. H. Irvine
City Engineer

I hereby certify that the subdivider named on this map has deposited with the Water Dept. of the City of Riverside, sufficient funds to cover the cost of installing all necessary fire hydrants together with all water mains and laterals to the curb line on all streets shown on said map; and that all PUE shown on this map are sufficient for all requirements of the Electric Light and Water Departments of the City of Riverside and for the Department of Public Utilities of said City.
Dated July 14, 1950

J. P. Hanson
Supt. of Light & Water Dept
City of Riverside

I hereby certify that according to the records of this office as of this date the property shown on this map is not subject to any special assessments, bonds and/or liens which have not been paid in full. This certificate does not include any special assessments the bonds of which have not become a lien upon said property.
Dated May 22, 1950

J. D. Smith
City Treasurer

I hereby certify that this map is as approved by the Riverside City Planning Commission at its meeting held on the 10th day of April, 1950

J. D. Malhotra Secy.
Riverside City Planning Commission

STATE OF CALIFORNIA } ss.
COUNTY OF RIVERSIDE }

On this 14th day of July, 1950, before me Beryl M. Vaughn, a Notary Public, in and for said County personally appeared Bessie M. Vaughn, known to me to be the President, and C.W. Voorhies, known to me to be the Secretary of Penn Homes Inc., the Corporation that executed the within and foregoing instrument and known to me to be the persons who executed the within instrument on behalf of the corporation therein named, and acknowledged to me that such corporation executed the same.
IN WITNESS WHEREOF, I have hereunto set my hand and affixed the official seal on this the day and year first above mentioned.

Beryl M. Vaughn
Notary Public in and for the County of Riverside Calif

I hereby certify that a bond in the sum of \$1000.00 has been (executed and filed) deposited with the Board of Supervisors of the County of Riverside State of California conditioned upon the payment of all taxes, State, County, Municipal or Local, and all special assessments collected as taxes, which at the time of filing of this map with the County Recorder are a lien against said property, but not yet payable and said bond has been duly approved by said board of supervisors.
Dated this 7th day of August 1950

H. C. Bagel
County Clerk and Ex-officio Clerk of the Board of Supervisors

We hereby certify that we are the owners of the land included within the subdivision shown on the annexed map consisting of one (1) sheet, that we are the only persons whose consent is necessary to pass a clear title to said land, and we hereby consent to the making of said map and subdivision as shown within the colored border line, and we hereby offer for dedication to public use for street purposes Lots A, B, C, & D, and for storm water drainage purposes, My 10 & My 5 Lots 18, 19, 21, and for installation and maintenance of public sewers and for construction and maintenance of all public utilities the five and ten foot easements shown by dotted lines and designated 5' P.U.E. and 10' P.U.E. and 10' H.

W. W. Voorhies President
C. W. Voorhies Secretary

PENN HOMES INC.
STATE OF CALIFORNIA } ss.
COUNTY OF RIVERSIDE }

I, W.G. Waite, City Clerk of the City of Riverside California, hereby certify that an undertaking satisfactory to the council of said City guaranteeing the construction of required street improvements in this subdivision was approved and filed in my office prior to the final acceptance of this subdivision map.

In Witness Whereof, I have hereunto set my hand and affixed the official seal of the City of Riverside California this 13th day of August, 1950.

W. G. Waite
City Clerk of the City of Riverside, California

RESOLVED: That this map consisting of one (1) sheet be, and the same is hereby accepted as the official map of Streeter Tract and the streets and easements offered hereon are accepted as public streets and easements and the City Clerk is hereby authorized and directed to attest said map by signing his name thereto as City Clerk of the City of Riverside, California and to affix the official seal of said City thereto.
I hereby certify that the foregoing resolution was adopted by the Mayor and Council of the City of Riverside this 13th day of AUG., 1950.

W. G. Waite
City Clerk of the City of Riverside, California

I hereby certify that according to the records of this office as of this date, there are no liens against the property shown on this map for unpaid State, County, or local taxes or special assessments collected as taxes, except taxes and special assessments now a lien, but not payable which are estimated at \$100.00.

W. L. Hicks
R. T. Hicks County Auditor
By J. C. Stasse Deputy
Dated June 19, 1950

I hereby certify that according to the records of this office, the property shown on this map is not subject to any special assessments which have not been paid in full.
Dated this 19th day of June, 1950.

Orval A. Johnston
Street Superintendent

I hereby certify that I am a Registered Civil Engineer of the State of California, and that this map consisting of one (1) sheet correctly represents a survey made under my supervision during March 1950; that all monuments shown actually exist and their positions are correctly shown.

J. F. Davidson
Registered Engineer No 862

M.B. 24/14

Book 1

FB 388-73
404-13

CB1