

M.B. 24/68

FILED

# MARION C TRACT

BEING A SUBDIVISION OF A PORTION OF BLOCKS 11 AND 12 AND A PORTION OF 12<sup>TH</sup> AND 13<sup>TH</sup> STS. AS SHOWN ON MAP OF RUBIDOUX HEIGHTS, M.B. 7, P. 30, RECORDS OF SAN BERNARDINO COUNTY, CALIFORNIA.

MAY, 1951.

J. F. DAVIDSON, C. E.

SCALE: 1" = 100'

JULY 19, 1951  
No. 3061 at 1:10 A.M.  
Jack A. Ross  
COUNTY RECORDER  
by O. A. Street  
DEPUTY  
Fee \$ 5.00  
Filed by County Clerk

I hereby certify that according to the records of this office the property shown on this map is not subject to any special assessments which have not been paid in full.

Dated this 25<sup>th</sup> day of June, 1951.

Orval Robinson  
Street Superintendent

I hereby certify that I have examined the within map; that the subdivision shown hereon is substantially the same as it appeared on the tentative map and any approved alterations thereof; that all provisions of Chapter 128 (Subdivision Map Act), Statutes of California, 1943, and of Ordinance No. 1328 of the City of Riverside, California, and all amendments thereto, have been complied with; that plans and specifications for drains, drainage, sewer and drainage works sufficient to protect all lots in said subdivision from flood or overflow have been approved by me; that all easements for sewers and drains shown on said map are correct in form and contents and are approved; and I am satisfied that this map is technically correct.

Dated this 9<sup>th</sup> day of July, 1951.

M. H. Irvine  
City Engineer

I hereby certify that the subdivider named on this map has deposited with the Water Department of the City of Riverside, sufficient funds to cover the cost of installing all necessary fire hydrants together with all water mains and laterals to the curb line on all streets shown on said map; and that all P.U.E. shown on this map are sufficient for all requirements of the Electric Light and Water Depts. of the City of Riverside, and for the Dept. of Public Utilities of said City.

Dated July 6, 1951

A. Kennedy  
Superintendent of Light and Water Department of the City of Riverside, California.

I hereby certify that according to the records of this office as of this date the property shown on this map is not subject to any special assessments, bonds and/or liens which have not been paid in full. This certificate does not include any special assessments the bonds of which have not become a lien upon said property.

Dated this 26 day of June 1951.

J. B. Smith  
City Treasurer

I hereby certify that this map is as approved by the Riverside City Planning Commission at its meeting held on the 7<sup>th</sup> day of June 1951.

J. V. Adams Secretary  
Riverside City Planning Commission.

I hereby certify that a bond in the sum of \$225.00 has been executed and filed (deposited) with the Board of Supervisors of the County of Riverside, California, conditioned upon the payment of all taxes, State, County, municipal or local and all special assessments collected as taxes which at the time of filing of this map with the County Recorder are a lien against said property but not yet payable and said bond has been duly approved by said Board of Supervisors

Dated this 16 day of July 1951.

H. C. Bogale Deputy  
G. A. PEQUEGNAT  
Clerk and ex-officio Clerk of the Board of Supervisors

We hereby certify that we are the owners of the land included within the subdivision shown on the annexed map consisting of one (1) sheet; that we are the only persons whose consent is necessary to pass a clear title to said land, and we hereby consent to the making of said map and subdivision as shown within the colored border line, and we hereby offer for dedication to public use Lots A and B for street purposes and for construction and maintenance of all public utilities the five foot easements shown by dotted lines and designated as "P.U.E."

Evelyn M. Adler and Stewart L. Adler

STATE OF CALIFORNIA } s.s.  
COUNTY OF RIVERSIDE }  
On this 9<sup>th</sup> day of July, 1951, before me the undersigned a Notary Public in and for said County and State personally appeared

Evelyn M. Adler and Stewart L. Adler  
known to me to be the persons who executed the within instrument and they acknowledged to me that they executed the same.

In Witness Whereof, I have hereunto set my hand and affixed my official seal the day and year in this certificate first above written

Beulah M. Laughlin  
Notary Public in and for the County of Riverside, State of California.

STATE OF CALIFORNIA } s.s.  
COUNTY OF RIVERSIDE }  
I, W. G. Waite, City Clerk of the City of Riverside, California, hereby certify that an undertaking satisfactory to the Council of said City, guaranteeing the construction of required street improvements in this subdivision was approved and filed in my office prior to the final acceptance of this subdivision map.

In Witness Whereof, I have hereunto set my hand and affixed the official seal of said City of Riverside this 10<sup>th</sup> day of July 1951.

W. G. Waite  
City Clerk of the City of Riverside, California

RESOLVED: That this map consisting of one (1) sheet be, and the same is hereby accepted as the official map of MARION C TRACT and the streets and easements offered hereon are accepted as public streets and easements and the City Clerk is hereby authorized and directed to attest said map by signing his name thereto as City Clerk of the City of Riverside, California, and to affix the official seal of said city thereto.

I hereby certify that the foregoing resolution was adopted by the Mayor and Council of the City of Riverside this 15<sup>th</sup> day of July 1951.

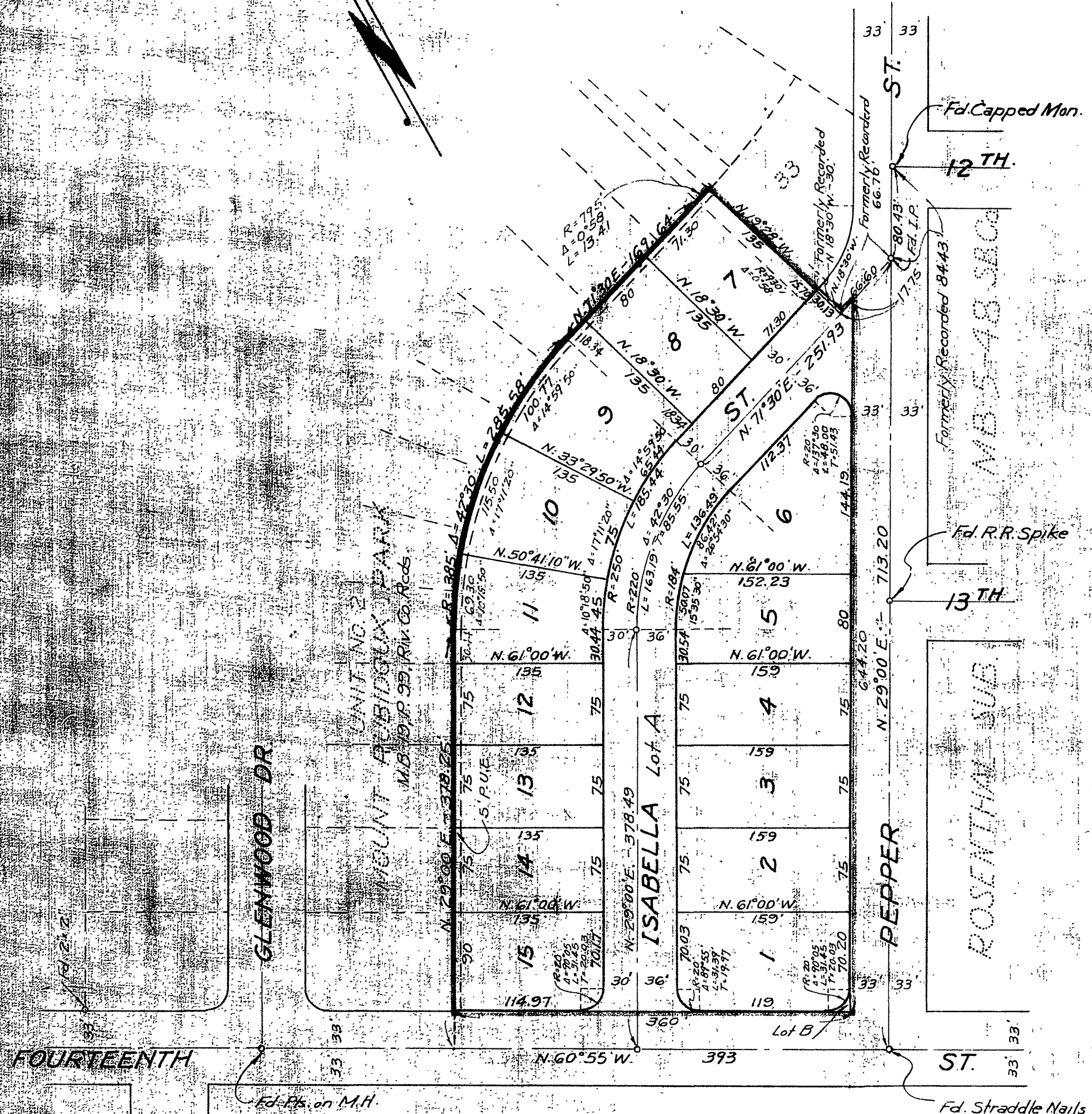
W. G. Waite  
City Clerk of the City of Riverside, California

I hereby certify that according to the records of this office as of this date, there are no liens against the property shown on this map for unpaid State, County or local taxes or special special assessments collected as taxes, excepted taxes and special assessments now a lien but not yet payable which are estimated at \$ 225.00

Dated this 25<sup>th</sup> day of June 1951.

B. J. Strode Deputy  
R. T. Hicks  
R. T. Hicks, County Auditor

ENGINEER'S NOTE:  
Bearings derived from the center line of PEPPER ST., N 29°00' E, as shown on map of Mt. Rubidoux Park, Unit No. 2, M. B. 7, p. 30, Riv. Co. Rec. indicates 3/4" Iron Pipe Monument set, unless otherwise noted, tagged R.F. 862 2x2 redwood stakes, painted white, set at all lot corners, tagged R.F. 862



RUBIDOUX HTS. MB 7-30 S.B. Co.

The property included within this subdivision is subject to an easement held by the Riverside Water Co., a corporation, for pipe lines, flumes and ditches.

I hereby certify that I am a Registered Civil Engineer of the State of California and that this map consisting of one (1) sheet correctly represents a survey made under my supervision during May, 1951; that all monuments shown actually exist and their positions are correctly shown.

J. F. Davidson  
Registered Engineer No. 862

M.B. 24/68

M.B. 24/68