

Sheet 2 of 2

FILED

DEC 15

W. A. GROSS  
COUNTY RECORDER  
San Diego, California

County Clerk

It is hereby certified that the same is hereby  
accepted as public streets and  
is hereby with effect from this date  
the seal of the County of San Diego  
is hereunto affixed.

W. A. GROSS  
County Clerk  
San Diego, California

Witness my hand  
and the seal of the County of San Diego  
this 15th day of December 1915.

W. A. GROSS  
County Clerk

Witness my hand and the seal of the County of San Diego  
this 15th day of December 1915.

W. A. GROSS  
County Clerk

Witness my hand and the seal of the County of San Diego  
this 15th day of December 1915.

It is hereby certified that the same is hereby  
accepted as public streets and  
is hereby with effect from this date  
the seal of the County of San Diego  
is hereunto affixed.

W. A. GROSS  
County Clerk

Witness my hand  
and the seal of the County of San Diego  
this 15th day of December 1915.

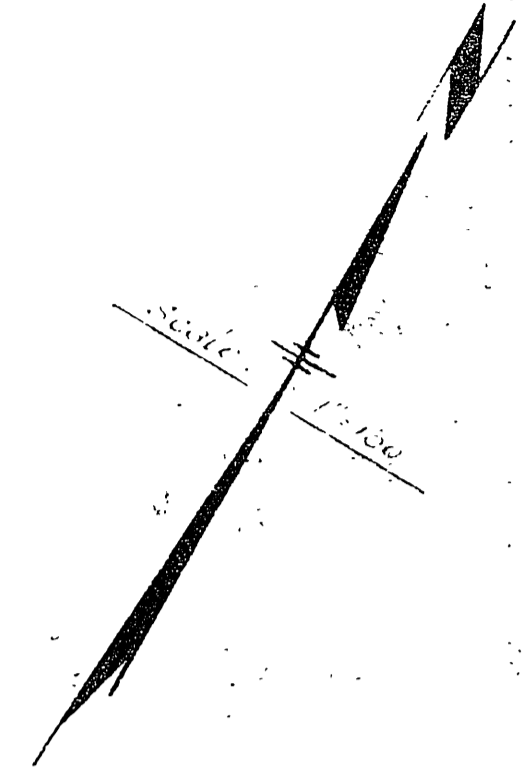
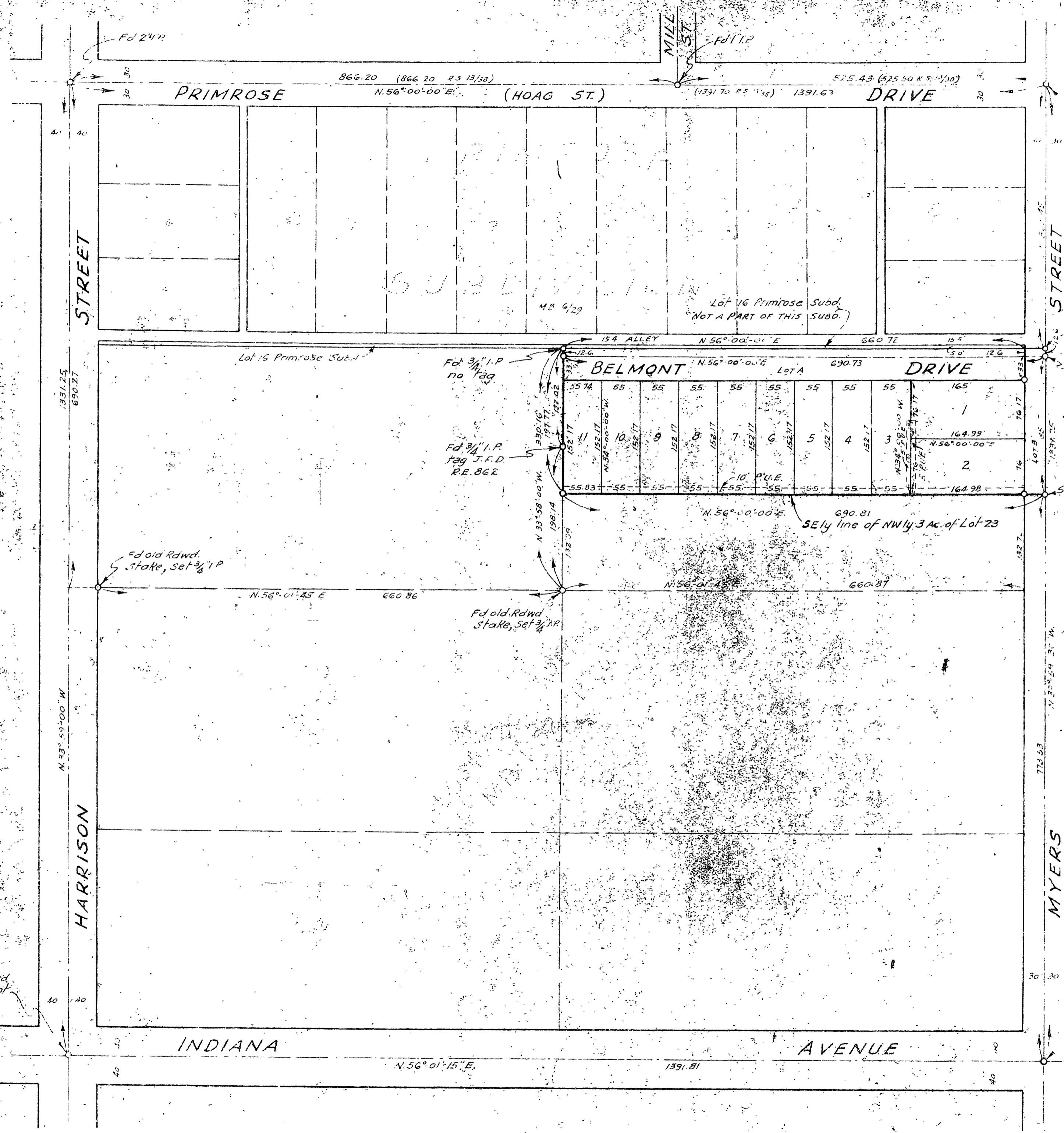
W. A. GROSS  
County Clerk

Witness my hand and the seal of the County of San Diego  
this 15th day of December 1915.

W. A. GROSS  
County Clerk

Witness my hand and the seal of the County of San Diego  
this 15th day of December 1915.

MB. 24/100



- Notes:
1. Basis of Bearings is the centerline of Primrose (Hoag St.) Drive, taken as  $N 56^{\circ} 00' 00'' E$ , as same is shown on map filed in Book 11 of Records of Survey at page 38 thereof, Riverside County Records.
  2. 3/4" I.P. tagged R.L. 1229 set at all points shown this & unless otherwise noted.
  3. 2 1/2" stakes tagged R.L. 1229 set at all lot corners unless otherwise noted.
  4. The property included within this subdivision is subject to an easement held by the Riverside Water Company, a corporation, for pipelines, flumes and ditches.
  5. R.S. 3130 refers to map filed in Book 13 of Records of Survey at page 38 thereof, Riverside County Records.

BY  
ALBERT A. WEBB  
CIVIL ENGINEER  
OCTOBER 1951

MB 24/100

MB. 24/100