

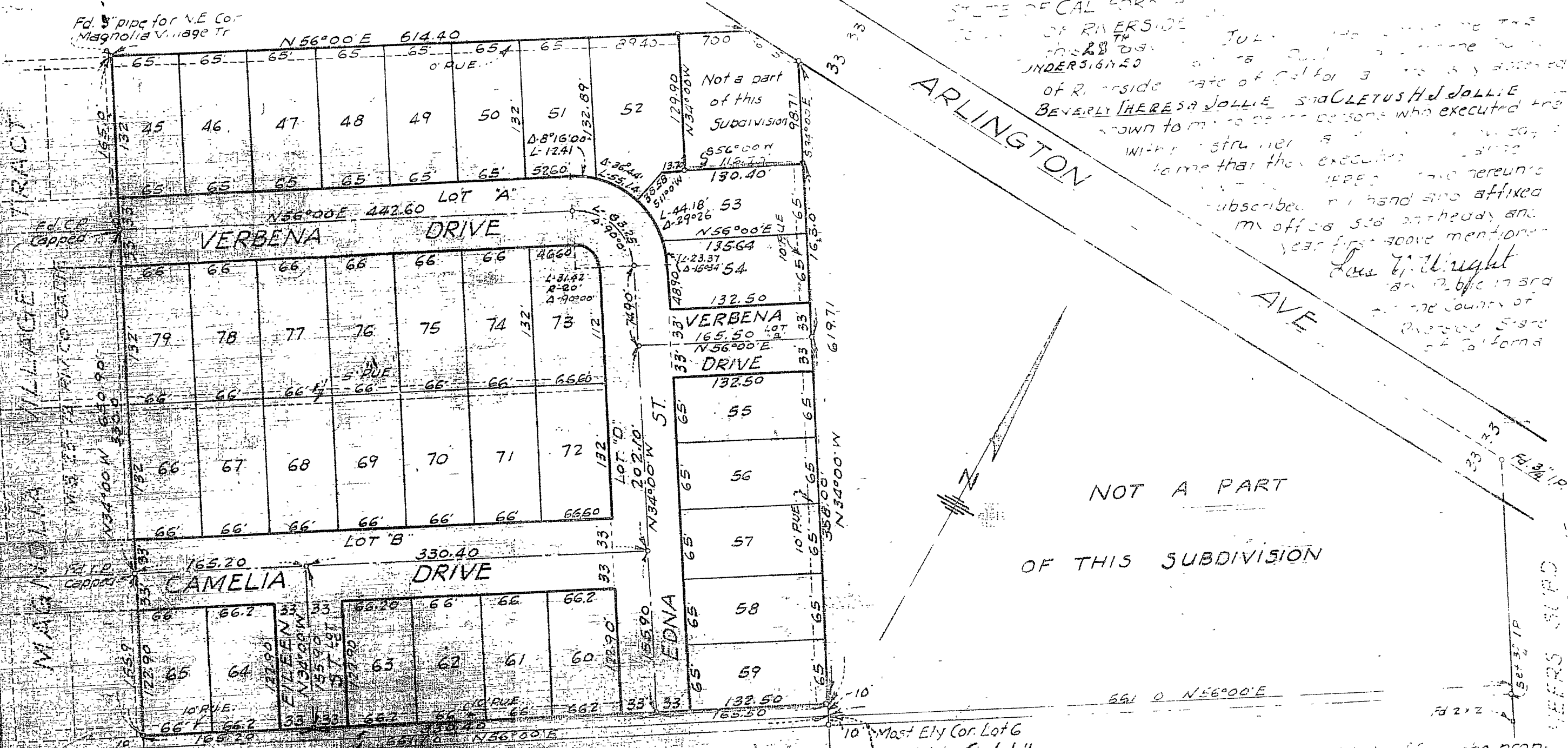
MAGNOLIA VILLAGE TRACT NO 2

Being a Subdivision of a Portion of Lot 6 Blk. 6 Lands of the Riverside Land and Co. as Shown by Map on file in BK of Maps Pa 70 Records of San Bernardino Co California

May 1952
 Donald McKee Licensed Surveyor

FILED
 SEPTEMBER 11 1952
 JACK A. ROSS
 COUNTY RECORDER
 by O.A. McKee DEPUTY
 Fee \$5.00
 Filed by County Clerk

M.B. 25/58



hereby certify that the sum of \$422.00 has been filed with the Board of Supervisors of the County of Riverside, California conditioned upon the payment of all taxes, State, County, and local, and all special assessments collected as taxes, which at the time of filing of this map with the County Recorder and a lien against said property but not enforceable and said bond has been duly approved by said Board of Supervisors on the 15th day of September 1952.

I hereby certify that I have examined the within map; that the subdivision shown hereon is substantially the same as it appeared on the tentative map and any approved a former map and that all provisions of Chapter 128 (Subdivision Map Act), Statutes of California, 1943 and of Ordinance No. 104 of the City of Riverside, California and amendments thereto, have been complied with; that plans and specifications for drains, drainage, sewer and drainage works sufficient to protect the lots in said subdivision from flood or overflow have been approved; that all easements for sewers and drains shown on said map are correct in form and contents and are approved; and I am satisfied that this map is technically correct.

Dated this 10th day of Sept 1952
 J. W. Adams
 City Engineer

I hereby certify that according to the records of this office the property shown on this map is not subject to any special assessments, bonds, and liens which have not been paid in full. This certificate does not include any special assessments the bonds of which have not yet become a lien upon said property.

Dated this 11th day of June 1952
 J. W. Adams
 City Treasurer

I hereby certify that this map is as approved by the Riverside City Planning Commission at its meeting held on the 5th day of June 1952.

J. W. Adams
 Sec. Riverside City Planning Commission

I hereby certify that according to the records of this office as of this date, there are no liens against the property shown on this map for unpaid State, County, Municipal or local taxes or special assessments collected as taxes, except taxes and special assessments now a lien but not payable which are estimated at \$422.00.

Dated this 27th day of July 1952
 P. T. Hicks
 County Auditor, County of Riverside Calif.

I hereby certify that the subdivision named on this map has deposited with the Water Department of the City of Riverside sufficient funds to cover the cost of installing all necessary fire hydrants, together with all water mains and appurtenances to the curb lines on all streets shown on said map; and that all public utility easements shown on this map are sufficient for requirements of the Electric, gas and water Departments of the City of Riverside and for the Department of Public Utilities of said City.

Dated this 2nd day of September 1952
 A. O. McKee
 Supt. of Light and Water Departments of City of Riverside

I, W. G. Waite, City Clerk of the City of Riverside Calif. hereby certify that an undertaking satisfactory to the Council of said City guaranteeing the construction of required street improvements in the subdivision was approved and filed in my office prior to the final acceptance of this subdivision map.

IN WITNESS WHEREOF, I have hereunto set my hand and affixed the official seal of the City of Riverside this 10th day of September 1952
 W. G. Waite
 City Clerk of the City of Riverside, Calif.

Resolved: That this map consisting of (1) one sheet be and the same is hereby accepted as the official map of "Magnolia Village Tract No. 2" and the streets and rights of way shown hereon are hereby accepted as public streets and rights of way, and the City Clerk is hereby authorized and directed to affix said map by signing his name thereto as City Clerk of the City of Riverside, California, and to affix the official seal of said City thereto.

I hereby certify that the foregoing resolution was adopted by the Mayor and Council of the City of Riverside this 10th day of Sept. 1952

W. G. Waite
 City Clerk of the City of Riverside, California

We hereby certify that we are the owners of or interested in the and included within the subdivision shown on the within map consisting of one (1) sheet; that we are the only persons whose consent is necessary to pass a clear title to said land, and we hereby consent to the making of said map and subdivision as shown within the colored border line and we hereby offer for dedication, to public use for street purposes and for public utilities, the 5' & 10' Easements shown by dotted lines and designated 5' & 10' RUE

Beverly Theresa Jolie
 Cletus H. Jolie

I hereby certify that according to the records of this office, the property shown on this map is not subject to any special assessments which have not been paid in full.

Dated this 11th day of June 1952
 J. W. Adams
 Street Superintendent

I hereby certify that I am a Licensed Land Surveyor of the State of California and that this map consisting of one (1) sheet correctly represents a survey made by me in May 1952 and that all the monuments shown hereon actually exist and their positions are correctly shown.

Donald McKee
 Licensed Land Surveyor No. 1875

M.B. 25/58

M.B. 25/58