

ARLINGTON MANOR

BEING A SUBDIVISION OF A PORTION OF
LOTS 20 & 21 BLK. 26, & CANAL AVE VACATED, VILLAGE OF ARLINGTON
BOOK I, PAGE 62, RECORDS OF SAN BERNARDINO COUNTY.

FEBRUARY, 1952.

SCALE: 1" = 60'

J. F. DAVIDSON, C. E.

SEP 17 1952
Jack A. Ross
O. A. Street
File & 2:30 PM
Fee \$ 4.00
Filed by County Clerk

We hereby certify that we are the owners of, or have some right, title or interest in the land included within the subdivision shown on the annexed map consisting of two sheets; that we are the only persons whose consent is necessary to pass a clear title to said land; that we hereby consent to the making and recording of said map and subdivision as shown within the colored border line and we hereby offer for dedication for public use, Lots A, B and C for street purposes; and for the construction and maintenance of all public utilities five and ten foot easements shown by dotted lines and designated as "5' P.U.E." and "10' P.U.E."

ARLINGTON BUILDERS, INC.

Jack Ewins President
Julius C. White Secretary

I hereby certify that I have examined the within map; that the subdivision shown hereon is substantially the same as it appeared on the tentative map and any approved alterations thereof; that all provisions of Chapter 128 (Subdivision Map Act), Statutes of California, 1943, and of Ordinance No. 1328 of the City of Riverside, California, and all amendments thereto, have been complied with; that plans and specifications for drains, drainage, sewers and drainage works sufficient to protect all lots in said subdivision from flood or overflow have been approved by me; that all easements for sewers and drains shown on said map are correct in form and contents and are approved; and I am satisfied that this map is technically correct.

Dated this 10th day of Sept. 1952.

M. H. Swine
City Engineer

RESOLVED: That this map consisting of two (2) sheets be, and the same is hereby accepted as the official map of Arlington Manor and the streets and easements offered hereon are accepted as public streets and easements and the City Clerk is hereby authorized and directed to attest said map by signing his name thereto as City Clerk of the City of Riverside, California, and to affix the official seal of said City thereto.

I hereby certify that the foregoing resolution was adopted by the Mayor and Council of the City of Riverside this 10th day of September, 1952.

W. Waite
City Clerk of the City of Riverside, California.

STATE OF CALIFORNIA } ss
COUNTY OF RIVERSIDE }

I, W. G. Waite, City Clerk of the City of Riverside, California, hereby certify that an undertaking satisfactory to the Council of said City guaranteeing the construction of required street improvements in this subdivision was approved and filed in my office prior to the final acceptance of this subdivision map.

IN WITNESS WHEREOF, I have hereunto set my hand and affixed this official seal of the City of Riverside, this 10th day of September, 1952.

W. Waite
City Clerk of the City of Riverside, California.

STATE OF CALIFORNIA }
COUNTY OF RIVERSIDE }

On this 5th day of SEPTEMBER, 1952, before me the undersigned, a Notary Public in and for said County and State, personally appeared Jack Ewins known to me to be the President and Julius C. White known to me to be the Secretary of the Corporation that executed the within instrument, known to me to be the persons who executed the within instrument, on behalf of the Corporation, therein named, and acknowledged to me that such Corporation, executed the within instrument pursuant to its by-laws or a resolution of its Board of Directors.

IN WITNESS WHEREOF, I have hereunto set my hand and affixed my official seal the day and year in this certificate first above written.

C. J. Beel
Notary Public in and for said County and State

I hereby certify that the subdivider named on this map has deposited with the Water Dept. of the City of Riverside, sufficient funds to cover the cost of installing all necessary fire hydrants together with all water mains and laterals to the curb line on all streets shown on this map; and that all P.U.E. shown on this map are sufficient for all requirements of the Electric Light and Water Departments of the City of Riverside and for the Department of Public Utilities of said City.

Dated this 4th day of September 1952.

A. Kearney
Superintendent of Light and Water Department, City of Riverside.

I hereby certify that according to the records of this office as of this date the property shown on this map is not subject to any special assessments, bonds and/or liens which have not been paid in full.

This certificate does not include any special assessments the bonds of which have not become a lien upon said property.

Dated this 4th day of SEPT. 1952.

R. Smith
City Treasurer.

I hereby certify that according to the records of this office, the property shown on this map is not subject to any special assessments which have not been paid in full.

Dated this 4th day of Sept 1952. Orval Coddington
Street Superintendent.

I hereby certify that I am a Registered Civil Engineer of the State of California, and that this map consisting of two (2) sheets correctly represents a survey made under my supervision during February, 1952; that all monuments shown actually exist and their positions are correctly shown.

J. F. Davidson
Registered Engineer No. 862.

I hereby certify that a bond in the sum of \$350.00 has been executed and filed with the Board of Supervisors of the County of Riverside, State of California, conditioned upon payment of all taxes, State, County, municipal, or local, and all special assessments collected as taxes, which at the time of filing of this map with the County Recorder are a lien against said property, but not yet payable and said bond has been duly approved by said Board of Supervisors.

Dated this 15th day of September 1952

G. A. Pequegnat
County Clerk and Ex-officio Clerk of the Board of Supervisors
By H. C. Beagle DEPUTY

I hereby certify that this map is approved by the Riverside City Planning Commission at its meeting held on the

4th day of SEPTEMBER 1952.

J. V. Williams Secretary.
Riverside City Planning Commission.

I hereby certify that according to the records of this office as of this date, there are no liens against the property shown on this map for unpaid State, County or local taxes or special assessments collected as taxes, except taxes and special assessments now a lien but not yet payable, which are estimated at \$350.00.

Dated this 5th day of September 1952.

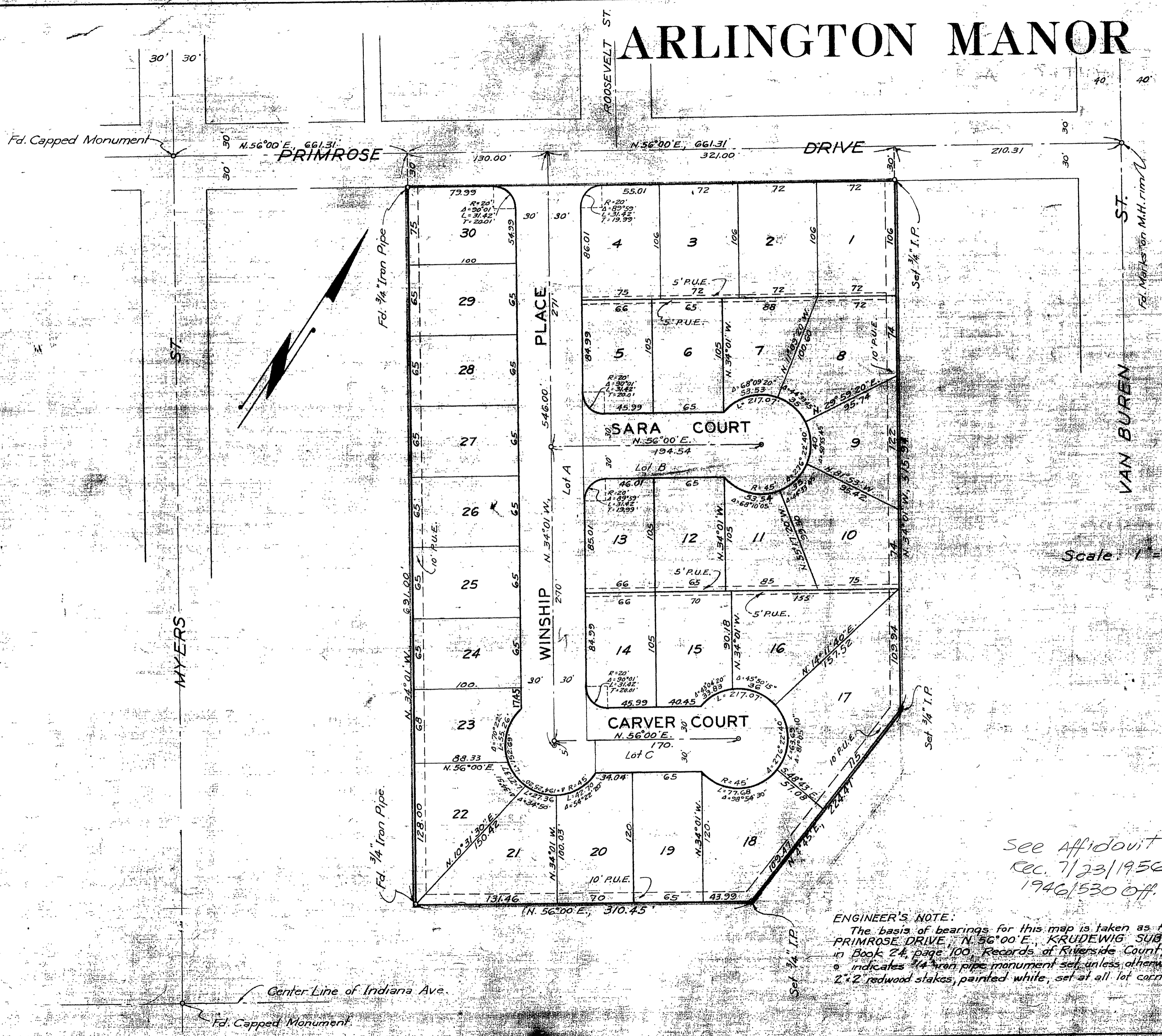
H. C. Beagle
Deputy.

R. T. Hicks
County Auditor.

MB. 25 / 59

MB. 25 / 59

ARLINGTON MANOR



Scale 1" = 60'

See Affidavit
Rec. 7/23/1956
1946/530 off. Rec.

ENGINEER'S NOTE:
 The basis of bearings for this map is taken as the center line of PRIMROSE DRIVE, N. 56°00' E., KRUEWIG SUBDIVISION, recorded in Book 24, page 100, Records of Riverside County.
 o indicates 3/4" iron pipe monument set, unless otherwise noted, tagged P.E. 862.
 2" x 2" redwood stakes, painted white, set at all lot corners, tagged R.E. 862.

M.B. 25/60

M.B. 25/60

Book No. 1

M.B. 25/60