

IN THE CITY OF RIVERSIDE, CALIFORNIA
HEERS SUBDIVISION NO. 6

BEING THE SW 1/4 OF THE NE 1/4 OF SECTION 32, T2S, R5W, S.B.B.8.M.
 RIVERSIDE COUNTY, CALIFORNIA.

SEPTEMBER 1952

K. IRVING MARSHALL
 CIVIL ENGINEER

SCALE 1"=100'

SHEET 1 OF 2 SHEETS

FILED

OCT 28 1952
 No. 2108 M
 Jack A. Ross
 by O. A. Neal
 Fee \$5.00
 Filed by County Clerk
 Subdn Gtee - R.T.Co.

We hereby Certify that we are the Owners of, or have some right, title or interest in the land included within the Subdivision shown hereon; that we are the only persons whose consents are necessary to pass clear title to said land, that we hereby consent to the making and filing of said subdivision and map as shown within the blue border line and we hereby offer for dedication to public use for street purposes, Lots A, B, C, D, E, F, G, H, I, J, K and for construction and maintenance of public utilities, the 5, 6 & 10' foot wide public utility easements designated as 5' P.U.E., 6' P.U.E. & 10' P.U.E. and for construction, maintenance, operation and repair of public sewer lines, the 6' foot wide public utility easements designated as 6' P.U.E.

Carol M. Heers
Charles M. Heers
Walter S. Roeder
Harold W. Heers
Beulah M. Heers
Virginia G. Heers
Betty R. Heers
Eva M. Roeder

STATE OF CALIFORNIA } SS
 COUNTY OF RIVERSIDE }
 On this 10th day of October 1952 before me Beulah M. Vaught a notary public in and for the County of Riverside, State of California, personally appeared WALTER S. ROEDER, EVA M. ROEDER, CHARLES M. HEERS, BETTY R. HEERS, CAROL D. HEERS, EVELYN M. HEERS, HAROLD W. HEERS, VIRGINIA R. HEERS known to me to be the persons whose names are subscribed to the within instrument and acknowledged to me that they executed the same. IN WITNESS WHEREOF I have hereunto set my hand and affixed my official seal the day and year in this certificate first above written.
Beulah M. Vaught
 Notary Public in and for the County of Riverside, State of California
 My Commission expires Oct. 28, 1955

We hereby Certify that we are the holders of, or interested in the legal title to the land included within the Subdivision as shown on the annexed map consisting of two sheets, by reason of being Trustee in those certain Deeds of Trust recorded September 25, 1952 in Book 1403, Pages 129, 131 and 134 respectively of Official Records in the Office of the County Recorder of Riverside County, California, and we hereby consent to the making of said map and Subdivision as shown within the colored border line.

SURETY ESCROW, INC. TRUSTEE
 A CORPORATION
 by Philbert J. Vinipres
 by S. Casdian Secretary

STATE OF CALIFORNIA } SS
 COUNTY OF LOS ANGELES }
 On this 10 day of October 1952, before me ANNA R. KORNER a notary public in and for the County of Los Angeles, State of California, personally appeared S. A. RIPLEY and S. CASHDON known to me to be the VICE PRESIDENT and SECRETARY respectively of SURETY ESCROW, INC., the Corporation that executed the within instrument and known to me to be the persons who executed it on behalf of said Corporation, and they acknowledged to me that such Corporation executed the same. IN WITNESS WHEREOF I hereunto set my hand and affix my official seal the day and year in this certificate first above written.
Anna R. Korner
 Notary Public in and for the County of Los Angeles, State of California.
 My Commission expires Aug. 26, 1955

I hereby Certify that according to the records of this Office as of this date the property shown on this map is not subject to any special assessments, bonds and/or liens which have not been paid in full. This Certificate does not include any special assessments the bonds of which have not become a lien upon said property.
 Dated OCTOBER 14th 1952
J. Daniel
 City Treasurer

I hereby Certify that the Subdivider named on this map has deposited with the Water Department of the City of Riverside, sufficient funds to cover the cost of installing all necessary fire hydrants, together with all water mains and laterals to the curb line on all streets shown on said map; and that P.U.E. shown on this map are sufficient for all requirements of the Electric Light and Water Department of the City of Riverside and for the Department of Public Utilities of said City.
 Dated October 9th 1952
A. J. Kennedy
 Superintendent of Light and Water Department, City of Riverside

I hereby Certify that this map was approved by the Riverside City Planning Commission at its regular meeting held on the 9th day of October, 1952.
J. V. Adams
 Secretary, Riverside City Planning Commission

I hereby Certify that according to the records of this office the property shown on this map is not subject to any special assessments which have not been paid in full.
 Dated Oct 14th 1952
Orval Addington
 Street Superintendent

I hereby Certify that I have examined the within map; that the Subdivision shown hereon is substantially the same as it appeared on the tentative map and any approved alterations thereof; that all provisions of Chapter 128, (Subdivision Map Act), Statutes of California, 1943, and of Ordinance No 1328 of the City of Riverside, California, and all amendments thereto, have been complied with; that plans and specifications for drains, drainage, sewers, and drainage works sufficient to protect all lots in said Subdivision from flood or overflow have been approved by me; that all easements for sewers and drains shown on said map are correct in form and contents and are approved, and I am satisfied that this map is technically correct.
 Dated Oct. 20th 1952
W. H. Irvine
 City Engineer

Resolved that this map, consisting of two (2) sheets, be, and the same is hereby accepted as the official map of HEERS SUBDIVISION No. 6 and the streets and easements are hereby accepted as public streets and easements, and the City Clerk is hereby authorized and directed to attest said map by signing his name hereto as the City Clerk of the City of Riverside, California, and to affix the official seal of said City thereto.

I hereby Certify that the foregoing resolution was adopted by the Mayor and Council of the City of Riverside this 21 day of October 1952.
W. G. Waite
 City Clerk of the City of Riverside, California
 by Betty Elliott Deputy

I hereby Certify that a bond in the sum of \$1800.00 has been deposited with the Board of Supervisors of the County of Riverside, State of California, conditioned on the payment of all taxes, State, County and local and all special assessments collected as taxes, which at the time of filing of this map with the County Recorder are a lien against said property, but not yet payable and said bond has been duly approved by the Board of Supervisors.
 Dated this 27th day of October 1952.
G. A. Pequegnat
 County Clerk and Ex-officio Clerk of the Board of Supervisors
 By H. C. Beale Deputy

STATE OF CALIFORNIA } SS
 COUNTY OF RIVERSIDE }
 I, W. G. Waite, City Clerk of the City of Riverside, California hereby Certify that an undertaking satisfactory to the Council of said City guaranteeing the construction of required street improvements in this subdivision was approved and filed in my office prior to the final acceptance of this subdivision map. IN WITNESS WHEREOF I have hereunto set my hand and affixed the official seal of the City of Riverside, California this 21st day of October 1952.
W. G. Waite
 City Clerk of the City of Riverside, California
 by Betty Elliott Deputy

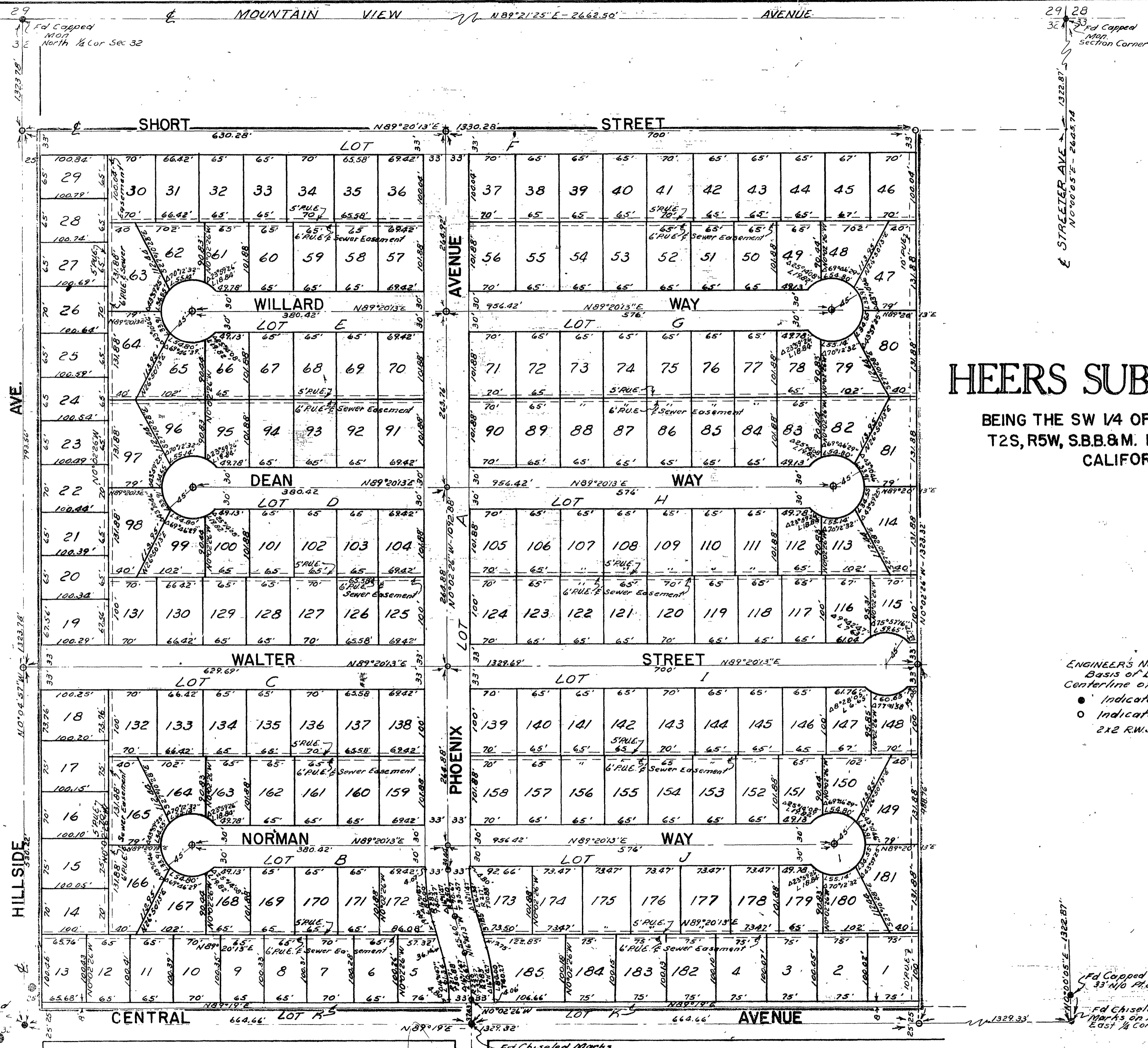
I hereby Certify that according to the records of this office, as of this date, there are no liens against the property shown on this map for unpaid State, County or local taxes or special assessments collected as taxes, except taxes and special assessments now a lien but not yet payable which are estimated to be \$1800.00.
 Dated this 14 day of October 1952.
R. T. Hulse County Auditor
 By H. B. Strade Deputy

I hereby Certify that I am a Registered Civil Engineer of the State of California, that this map, consisting of two (2) sheets, represents a Survey made under my supervision during September, 1952, that all monuments shown hereon actually exist and are sufficient to enable the survey to be retraced.
K. Irving Marshall
 Registered Civil Engineer No. 1126

M.B. 25/69

M.B. 25/69

M.B. 25/70



HEERS SUBDIVISION NO. 6

BEING THE SW 1/4 OF THE NE 1/4 OF SECTION 32
T2S, R5W, S.B.B.&M. RIVERSIDE COUNTY,
CALIFORNIA.

ENGINEER'S NOTES:
Basis of Bearing for this Survey is the
Centerline of Central Avenue, N89°19'E.

- Indicates monuments found as noted.
- Indicates 3/4" iron pipe set.
- 2x2 R.W.S. set at all Lot Corners.

SCALE 1"=100'

N

AVE.

HILLSIDE

PHOENIX

Fd Capped Mon.
33" N/O P.L. on M.H.

Fd Chiseled
Marks on M.H. Rim
East 1/4 Cor. Sec. 32

Robert J. Heers

MB 25/70