

# ARLINGTON PALMS

BEING A SUBDIVISION OF LOTS 15,16 AND A PORTION OF LOT 17 OF BLOCK 25 OF THE VILLAGE OF ARLINGTON AS PER MAP RECORDED IN BOOK 1 OF MAPS AT PAGE 62 THEREOF, RECORDS OF SAN BERNARDINO COUNTY, CALIFORNIA

FILED

NOVEMBER 7 1952

No. \_\_\_\_\_ at 10:31 A.M.

JACK A. ROSS

COUNTY RECORDER

by O. A. Mead DEPUTY

Fee \$5.00  
Filed by County Clerk.

-BY-

ALBERT A. WEBB ASSOCIATES  
CIVIL ENGINEERS  
AUGUST 1952

RESOLVED: That this map consisting of two (2) sheets be and the same is hereby accepted as the official map of ARLINGTON PALMS and the streets and the P.U.E. hereon are accepted as public streets and P.U.E. and the City Clerk is hereby authorized and directed to affix said map by signing his name thereto as City Clerk of the City of Riverside, California, and to affix the seal of said City thereto.

I hereby certify that the foregoing resolution was adopted by the Mayor and Council of the City of Riverside this 5<sup>th</sup> day of Nov. 1952

W. G. Waite  
City Clerk of the City of Riverside, California

I hereby certify that according to the records of this office as of this date, the property shown on this map is not subject to any special assessments, bonds, and/or liens which have not been paid in full. This certificate does not include any special assessments, the bonds of which have not yet become a lien upon said property.

Dated SEPT. 8 1952

W. B. Smith  
City Treasurer

I hereby certify that according to the records of this office, the property shown on this map is not subject to any special assessments which have not been paid in full.

Dated SEPT. 8 1952

Orval Callaghan  
Street Superintendent

I hereby certify that according to the records of this office as of this date, there are no liens against the property shown on this map for unpaid State, County, or local taxes, or special assessments collected as taxes, ~~except taxes and special assessments now a lien against said property but not yet payable, and said bond has been duly approved by said Board of Supervisors.~~ which are estimated at \$14,000.00.

Dated Nov. 3<sup>rd</sup> 1952

R. T. HICKS, County Auditor

By W. G. Waite Deputy

STATE OF CALIFORNIA }  
COUNTY OF RIVERSIDE } ss.

On this 30<sup>th</sup> day of Nov. 1952, before me, the undersigned, a Notary Public in and for said County in the State of California, M. D. LOWERY & W. A. LEE, Esqs. shown to me to be the President and Secretary respectively of UNIVERSITY GARDENS, Inc. the corporation that executed the within instrument and known to me to be the persons who executed the same on behalf of the corporation, and acknowledged to me that such corporation executed the same.

IN WITNESS WHEREOF, I have hereunto set my hand and affixed my official seal the day and year in this certificate first written.

We hereby certify that we are the owners of or are interested in, the land included within the subdivision shown on the annexed map consisting of two (2) sheets; that we are the only persons whose consent is necessary to pass a clear title to said land, and we hereby consent to the making of said map and subdivision as shown within the colored border lines, and we hereby dedicate to public use, for street purposes, Lots A to G inclusive, and for pedestrian ways, Lots H to K inclusive, and for construction and maintenance of public utilities, the 5 foot and 10 foot public utility easements shown by dotted lines and designated as 5' P.U.E. and 10' P.U.E.

UNIVERSITY GARDENS, INC., a Corporation

By W. D. Towry President

By W. A. Leeper secretary

I hereby certify that the subdivider named on this map has deposited with the Water Dept. of the City of Riverside, sufficient funds to cover the cost of installing all necessary fire hydrants, together with all water mains and laterals to the curb line on all streets shown on said map; and that all P.U.E. and Alleys shown on this map are sufficient for all requirements of the Electric, Light, and Water Departments of the City of Riverside and for the Department of Public Utilities of said City.

Dated October 31st 1952

A. J. Kennedy  
Supt. of Light and Water Depts.  
City of Riverside

I hereby certify that I have examined the within map; that the subdivision shown hereon is substantially the same as it appeared on the tentative map and any approved alterations thereof; that all provisions of Chapter 128 (Subdivision Map Act), Statutes of California, 1943, and of Ordinance No. 1328, of the City of Riverside, California, and all amendments thereto, have been complied with; that plans and specifications for drains, drainage, sewer and drainage works sufficient to protect all lots in said subdivision from flood or overflow have been approved by me; that all easements for sewers and drains shown on said map are correct in form and contents and are approved; and I am satisfied that this map is technically correct.

Dated Nov. 3<sup>rd</sup> 1952

M. H. Irvine  
City Engineer

I hereby certify that I am a Registered Civil Engineer of the State of California and that this map consisting of two (2) sheets correctly represents a survey made under my supervision during August 1952 and that all monuments shown hereon, actually exist and their positions are correctly shown.

Albert A. Webb  
Registered Civil Engineer No. 1229

NOTES:-

- 1. Set 3/4" I.P. tagged R.E. 1229 at all points shown thus o unless otherwise noted.
- 2. Set 2"x2" stakes tagged R.E. 1229 at all lot corners unless otherwise noted.
- 3. Basis of Bearings is the centerline of Indiana Ave., taken as N.56°00'00"E.
- 4. The property included within this subdivision is subject to an easement held by the Riverside Water Company, a Corporation, for pipelines, flumes and ditches.

STATE OF CALIFORNIA }  
COUNTY OF RIVERSIDE } ss.

I, W. G. Waite, City Clerk of the City of Riverside, California, hereby certify that an undertaking, satisfactory to the Council of said City, guaranteeing the construction of required street improvements on this subdivision, was approved and filed in my office prior to the final acceptance of this subdivision map.

IN WITNESS WHEREOF I have hereunto set my hand and affixed the official seal of the City of Riverside this 5<sup>th</sup> day of Nov. 1952

W. G. Waite  
City Clerk of the City of Riverside, California

~~I hereby certify that a bond in the sum of \$\_\_\_\_\_ (cash) has been deposited (executed and filed) with the Board of Supervisors of the County of Riverside, State of California, conditioned upon the payment of all taxes, State, County, Municipal or local, and all special assessments collected as taxes, which at the time of filing of the annexed map with the County Recorder are a lien against said property but not yet payable, and said bond has been duly approved by said Board of Supervisors.~~

Dated 1952

Gordon A. Pequegnat, County Clerk  
and ex-officio Clerk of the Board  
of Supervisors

By \_\_\_\_\_ Deputy

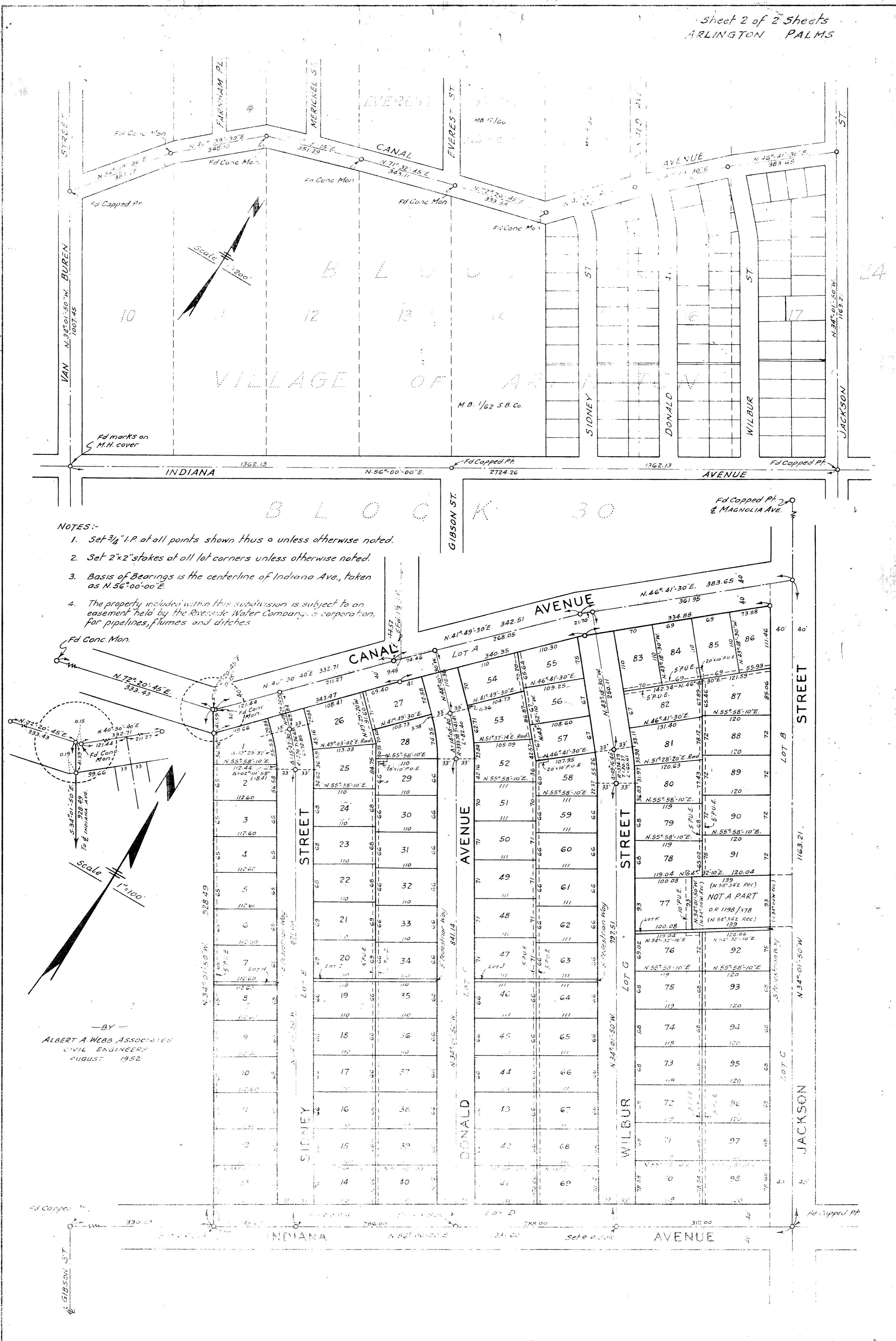
I hereby certify that this map is as approved by the Riverside City Planning Commission at its meeting held on the 4<sup>th</sup> day of SEPT. 1952.

J. V. Adams Secretary  
Riverside City Planning Commission

257  
78  
M.B. 25/78

M.B. 25/78

Block No. 1



NOTES:-

1. Set  $\frac{3}{4}$ " I.P. at all points shown thus  $\circ$  unless otherwise noted.
2. Set 2"x2" stakes at all lot corners unless otherwise noted.
3. Basis of Bearings is the centerline of Indiana Ave., taken as N. 56° 00' 00" E.
4. The property included within this subdivision is subject to an easement held by the Riverside Water Company, a corporation, for pipelines, flumes and ditches.

—BY—  
 ALBERT A. WEBB ASSOCIATES  
 CIVIL ENGINEERS  
 AUGUST 1952

61/56