

25/94
M.B. 25/94

IN THE CITY OF RIVERSIDE CALIF. LEATHE KNOLLS

Being a Subdivision of a portion of Lots 64, 76, 77 and 79 of the Southern California Colony Association Lands as shown by map on file in Bk. 7, page 3, Records of San Bernardino County, California, December, 1952. Scale: 1" = 100'

Donald J. McKee
Licensed Surveyor

FILED

FEBRUARY 16 1953
No. 7387 at 11:10 A.M.
JACK A. ROSS
COUNTY RECORDER
by D. A. Mead
DEPUTY
Fee \$5.00
Filed by County Clerk
SUB'DN GTEE STICO.

We hereby certify that we are the owners of, or have some right, title or interest in the land included within the subdivision shown on the within map consisting of two (2) sheets, that we are the only persons whose consent is necessary to pass a clear title to said land, and we hereby consent to the making of said map and subdivision as shown within the colored border line, and we hereby offer for dedication to public use for street purposes Lots A to F inclusive, and for Public Utilities, Drainage and Public Sewers, the five and ten foot easements shown by dotted lines and designated "5' P.U.E.", "10' P.U.E.", "5' Drainage, P.U. & Sewer Easement", "10' Drainage, P.U. & Sewer Easement", and "5' Drainage Easement."

Harry C. Marsh Leathe M. Marsh

I hereby certify that the subdivider named on this map has deposited with the Water Department of the City of Riverside, sufficient funds to cover the cost of installing all necessary fire hydrants, together with all water mains and laterals to the curb lines on all streets shown on said map; and that all public utility easements shown on this map are sufficient for all requirements of the Electric Light and Water Departments of the City of Riverside, and for the Department of Public Utilities of said City.

Dated this 9th day of February 1953

A. J. Kennedy
Supt. of Light and Water Departments of the City of Riverside, California

I hereby certify that according to the records of this office, the property shown on this map is not subject to any special assessments, bonds and/or liens which have not been paid in full. This does not include any special assessments, the bonds of which have not become a lien upon said property.

Dated this 5th day of DECEMBER 1952.

J. J. Smith
City Treasurer

I hereby certify that I am a Licensed Land Surveyor in the State of California, and that this map, consisting of two (2) sheets, correctly represents a survey made under my supervision in December, 1952, and that all the monuments shown hereon actually exist and their positions are correctly shown.

Donald J. McKee
Licensed Land Surveyor No. 1825

State of California } s.s.
County of Riverside }

On this 30th day of DECEMBER 1952, before me THE UNDERSIGNED a Notary Public in and for the County of Riverside, State of California, personally appeared Harry C. Marsh and Leathe M. Marsh known to me to be the persons who executed the within instrument and they acknowledged to me that they executed the same.

WITNESS my hand and official seal.

Lois N. Wright
Notary Public in and for the County of Riverside, Calif.

RESOLVED: That this map consisting of two sheets be, and the same is hereby accepted as the official map of "LEATHE KNOLLS" and the streets and rights of way shown hereon are hereby accepted as Public Streets and rights of way, and the City Clerk is hereby authorized and directed to attest said map by signing his name thereto as City Clerk of the City of Riverside, California, and to affix the official seal of said City thereto.

I hereby certify that the foregoing resolution was adopted by the Mayor and Council of the City of Riverside this 10th day of February, 1953.

W. P. White
City Clerk of the City of Riverside, Calif.

I hereby certify that according to the records of this office as of this date, there are no liens against the property shown on this map for unpaid State, County, Municipal or local taxes, or special assessments collected as taxes, except taxes and special assessments now a lien but not yet payable, which are estimated to be \$_____.

Dated this 10th day of DECEMBER 1952.

H. C. Steade
County Auditor, County of Riverside, California.

State of California } s.s.
County of Riverside }

I, W. G. Waite, City Clerk of the City of Riverside, California hereby certify that an undertaking satisfactory to the Council of said City guaranteeing the construction of required street improvements in the subdivision, was approved and filed in my office prior to the final acceptance of this subdivision map.

IN WITNESS WHEREOF, I have hereunto set my hand and affixed the official seal of the City of Riverside, California this 10th day of February, 1953.

W. G. Waite
City Clerk of the City of Riverside, California.

I hereby certify that I have examined the within map; that the subdivision shown hereon is substantially the same as it appeared on the tentative map and any approved alterations thereof; that all provisions of Chapter 128 (Subdivision Map Act), Statutes of California, 1943, and of Ordinance No. 1328 of the City of Riverside, California, and all amendments thereto, have been complied with; that all plans and specifications for drains, drainage, sewer and drainage works sufficient to protect all lots in subdivision from flood have been approved by me; that all easements for sewers and drains shown on said map are correct in form and contents and are approved; and I am satisfied that this map is technically correct.

Dated this 10th day of Feb. 1953

M. H. Swaine
City Engineer

I hereby certify that a bond, in the sum of \$_____ has been (executed and filed) deposited with the Board of Supervisors of the County of Riverside, State of California, conditioned upon the payment of all taxes, State, County, Municipal or local, and all special assessments collected as taxes, which at the time of filing of this map with the County Recorder, are a lien against said property, but not yet payable, and said bond has been duly approved by said Board of Supervisors.

Dated this _____ day of _____ 1952.

G. A. Pequegnat
County Clerk and ex-officio
Clerk of the Board of Supervisors.

I hereby certify that according to the records of this office, the property shown on this map is not subject to any special assessments which have not been paid in full.

Dated this 11 day of DECEMBER 1952

Orval C. Addington
Street Superintendent

I hereby certify that this map is as approved by the Riverside City Planning Commission at its meeting held on the 8th day of January 1953.

J. V. Adams Sec'y
Riverside City Planning Commission

by _____
Deputy

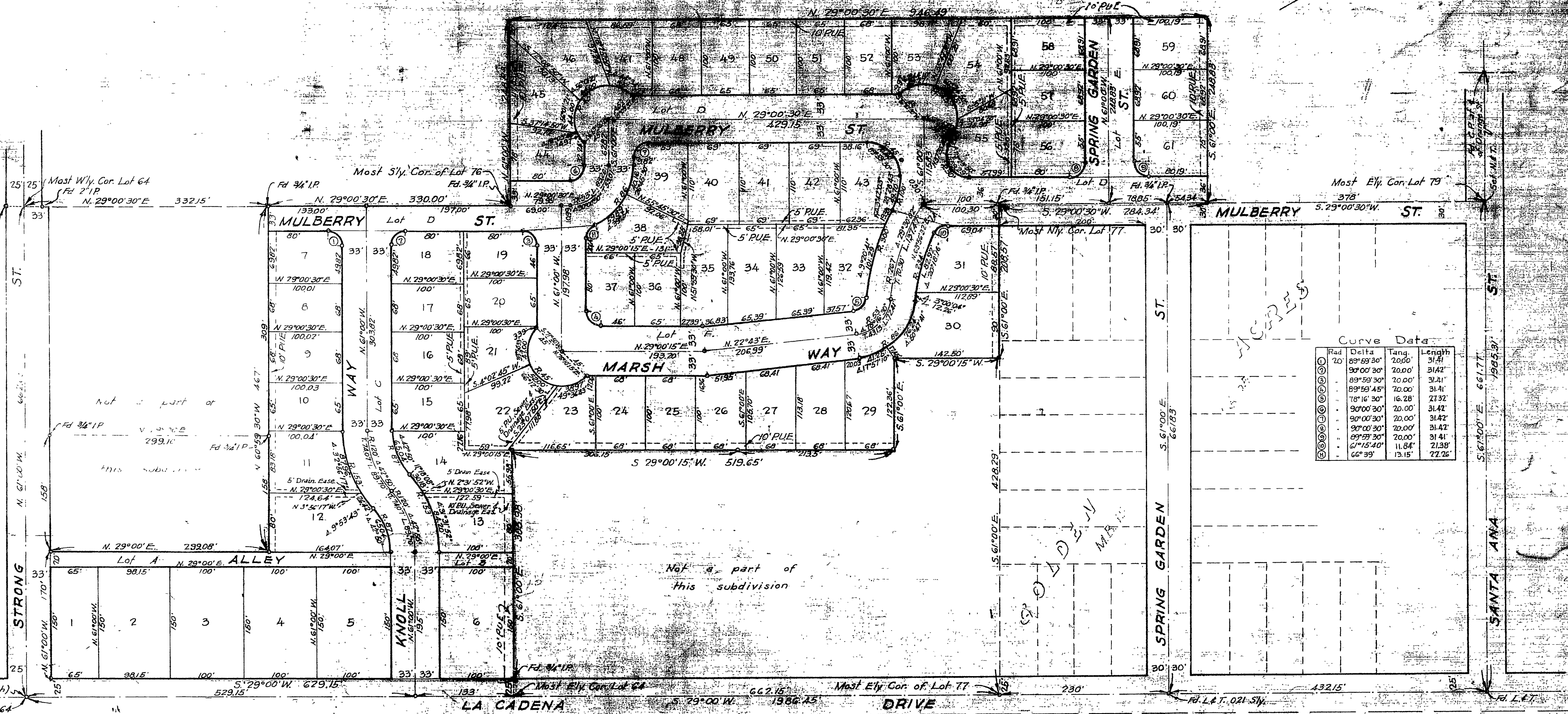
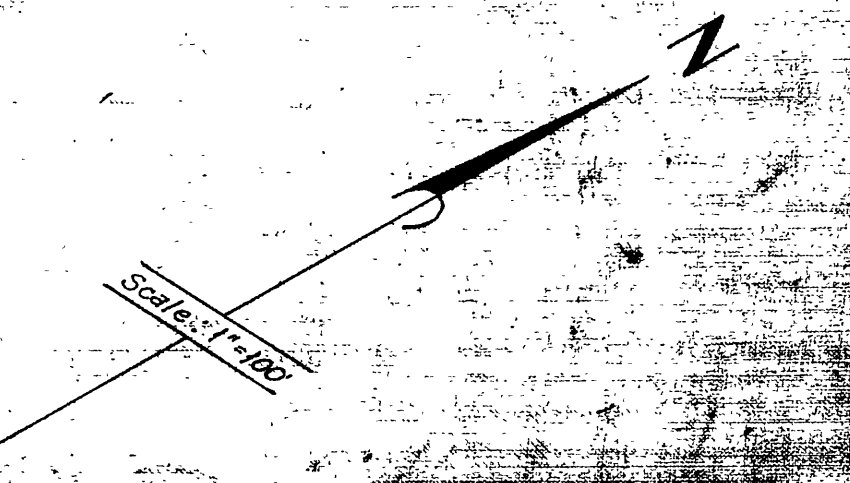
M.B. 25/94

IN THE CITY OF RIVERSIDE CALIF. LEATHE KNOLLS

Being a Subdivision of a portion of Lots 64, 76, 77 and 79 of the Southern California Colony Association Lands as shown by map on file in Bk. 7, page 3 Records of San Bernardino County, California, December, 1952

Donald J. Mc Kee
Licensed Surveyor

Scale: 1" = 100'



Curve Data

Rad	Delta	Tang	Length
20'	89°59'30"	20.00'	31.41'
	90°00'30"	20.00'	31.42'
	89°59'30"	20.00'	31.41'
	89°59'45"	20.00'	31.41'
	76°16'30"	16.28'	27.32'
	90°00'30"	20.00'	31.42'
	90°00'30"	20.00'	31.42'
	89°59'30"	20.00'	31.42'
	61°15'40"	11.64'	21.38'
	66°39'	13.15'	27.26'

Not a part of this subdivision

DAVIS MARSH

5' Drain Easement

18" Iron Sewer & Drainage Easement

5' Drain Easement

18" Iron Sewer & Drainage Easement

5' Drain Easement

18" Iron Sewer & Drainage Easement

5' Drain Easement

18" Iron Sewer & Drainage Easement

5' Drain Easement

18" Iron Sewer & Drainage Easement

Note: Bearings are based on the center line of La Cadena Drive as being S. 29°00'W. as shown by map of "Golden Acres" filed in M.B. 15, Page 35, Records of Riverside County, California.
 o 3/4" Iron pipe monument set, unless otherwise noted.
 2"x2" Redwood stakes, tagged "LS.1875", set at all lot corners.

M.B. 25/95

M.B. 25/95

Book No. 1

MB 25/95