

25/97
M.B. 25/97

FILED
FEBRUARY 25 1953
at 11:02 A.M.
JACK A. ROSS
COUNTY RECORDER
by O.A. Walt
DEPUTY
Fee \$5.00
Filed by County Clerk
SUB'DN GTEE STICO

CALIFORNIA GROVES

Being a Subdivision of a Portion of Lots 10 and 15 in Blk. 6 Lands of the Riverside Land and Irrigating Co. as Shown by Map on file in Book I of Maps Pg. 70 Rec. of San Bernardino Co. Calif.

June 1952
Donald J. McKee - Licensed Surveyor

STATE OF CALIFORNIA } 55
COUNTY OF RIVERSIDE }
I, W.G. WAITE, City Clerk of the City of Riverside, California, hereby certify that an undertaking satisfactory to the Council of said City guaranteeing the construction of required street improvements in this subdivision was approved and filed in my office prior to the final acceptance of this subdivision map.

IN WITNESS WHEREOF, I have hereunto set my hand and affixed the official seal of the City of Riverside this 3rd day of Feb., 1953.
W.G. Waite
City Clerk of the City of Riverside, California

I hereby certify that according to the records of this office, the property shown on this map is not subject to any special assessments which have not been paid in full.
Dated this 11th day of December 1952
Orval Coddington
Street Superintendent

I hereby certify that the subdivider named on this map has deposited with the Water Department of the City of Riverside, sufficient funds to cover the cost of installing all necessary fire hydrants, together with all water mains and laterals to the curblines on all streets shown on said map, and that all public utility easements shown on this map are sufficient for all requirements of the Electric, Light and Water Departments of the City of Riverside and for the Department of Public Utilities of said City.
Dated this 21st day of January 1953
A. Kennedy
Supt. of Light and Water Depts. of the City of Riverside

State of California } 33
County of Los Angeles }
On this 14th day of January 1953 before me Homer F. Howell, a Notary Public in and for the County of Los Angeles, State of California, personally appeared K. Sande Senness and Mary Levergood known to me to be the President and Secretary respectively of the corporation that executed the within instrument, known to me to be the persons who executed the same on behalf of the Corporation therein named, and acknowledged to me that such Corporation executed the same.
Witness my hand and official seal Homer F. Howell
Notary Public in and for said County and State.

Resolved: That this map consisting of one (1) sheet be and the same is hereby accepted as the official map of California Groves and the streets and rights of way shown hereon are hereby accepted as Public Streets and rights of way, and the City Clerk is hereby authorized and directed to attest said map by signing his name thereto as City Clerk of the City of Riverside, California, and to affix the official seal of said City thereto.
I hereby certify that the foregoing resolution was adopted by the Mayor and Council of the City of Riverside this 3rd day of Feb., 1953.
W.G. Waite
City Clerk of the City of Riverside, Calif.

I hereby certify that I am a Licensed Land Surveyor in the State of California, and that this map consisting of one (1) sheet correctly represents a survey made by me in June 1952 and that all the monuments shown hereon actually exist and their positions are correctly shown.
Donald J. McKee
Licensed Land Surveyor No. 1825

Bearings are based on the center line of California Ave shown as N56°00' E on Heers Subd. M.R. 23-17 and on the 30" pipe set at points shown this unless otherwise noted. All R/W signs tagged 18-1925 set at all lot corners.

I hereby certify that a bond in the sum of _____ has been filed with the Board of Supervisors of the County of Riverside, State of Calif., and is conditioned upon the payment of all taxes, State, County, Municipal or local, and all special assessments collected as taxes which at the time of filing of this map with the County Recorder are a lien against said property, but not yet payable and said bond has been duly approved by said Board of Supervisors.
Dated this _____ day of _____ 1952
G.A. Paquegnat County Clerk and Ernestina Clark Clerk of the Board of Supervisors of the County of Riverside

I hereby certify that I have examined the within map, that the subdivision shown hereon is substantially as it appeared on the Entry Map and any alterations thereof; that all provisions of Chapter 178 (Subdivision Map Act), Statutes of California, 1943, and of Ordinance No. 1328 of the City of Riverside, California, and all amendments thereto have been complied with; that plans and specifications for drains, drainage, sewer and drainage works sufficient to protect all lots in said subdivision from flood or overflow have been approved by me; that all easements for sewers and drains shown on said map are correct in form and contents and are approved; and I am satisfied that this map is technically correct.
Dated this 2nd day of Feb. 1953
M. N. Jones
City Engineer

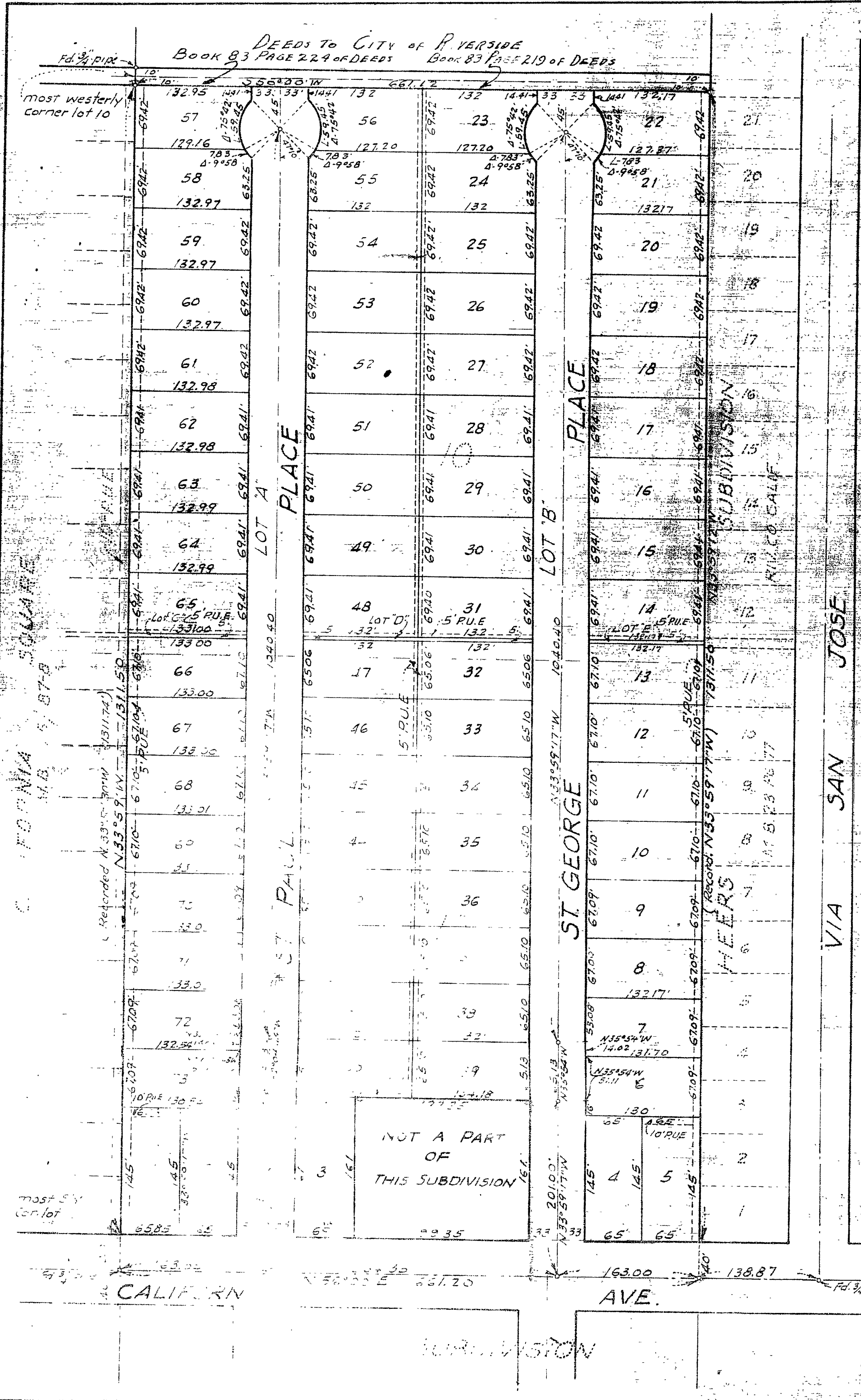
I hereby certify that according to the records of this office the property shown on this map is not subject to any special assessments, bonds and/or liens which have not been paid in full. This certificate does not include any special assessments the bonds of which have not yet become a lien upon said property.
Dated this 11th day of December 1952
W.G. Waite
City Treasurer

I hereby certify that this map is as approved by the Riverside City Planning Commission at its meeting held on the 30th day of Jan 1953.
J. V. Adams
Secy Riverside City Planning Commission

I hereby certify that according to the records of this office as of this date, there are no liens against the property shown on this map for unpaid State, County, Municipal or local taxes or special assessments collected as taxes, except taxes and special assessments now due but not yet payable which are a lien against said property.
Dated this 30th day of Jan 1953
V. M. Hyde
County Tax Collector, County of Riverside Calif.

We hereby certify that we are the owners of or have some right, title or interest in the land included within the subdivision shown hereon; that we are the only persons whose consents are necessary to pass clear title to said land; that we hereby consent to making and filing of said subdivision and map as shown within the blue border line, and we hereby offer for dedication to public use for street purposes Lots 4 and 5 and for pedestrian ways lots C, D, E and for construction and maintenance of public utility as the five, ten foot utility easement shown by dotted lines and designated 5' or 10' R.W.

HOMES OF TOMORROW, INCORPORATED
K. Sanki President
Mary Levergood Secretary



Bearings are based on the center line of California Ave shown as N56°00' E on Heers Subd. M.R. 23-17 and on the 30" pipe set at points shown this unless otherwise noted. All R/W signs tagged 18-1925 set at all lot corners.

Book No. 1 MB 25/97

M.B. 25/97