

26/17
M.B.26/17

LA HACIENDA RANCHO TRACT.

Being a Subdivision of a Portion of Lot 11 Blk. 25, Village of Arlington, as Shown by Map on file in Book 1 of Maps, pg. 62, Records of San Bernardino County, Calif.

August 1952

Donald J. McKee - Licensed Surveyor

Scale 1 in. = 100 ft.

I hereby certify that according to the records of this office the property shown on this map is not subject to any special assessments, bonds, and, or liens which have not been paid in full. This certificate does not include any special assessments, the bonds of which have not become a lien upon said property.

Dated this 14th day of April 1953

Donald J. McKee
City Treasurer

I hereby certify that I am a Licensed Land Surveyor in the State of California and that this map consisting of one (1) sheet correctly represents a survey made by me in August 1952, and that all the monuments shown hereon actually exist and their positions are correctly shown

Donald J. McKee
Licensed Land Surveyor #1825

We hereby certify that we are the owners of or interested in the land included within the subdivision shown on the annexed map consisting of one (1) sheet, that we are the only persons whose consent is necessary to pass a clear title to said land, that we hereby consent to the making of said map and subdivision as shown within the colored border line, and we hereby offer for dedication to public use for street purposes Lot "A" and for Pedestrian Way Lots B & C and for construction and maintenance of Public Utilities the 10 ft. Public Utility easements shown by dotted lines and designated "10' P.U.E."

STARBUCK CONSTRUCTION COMPANY

by *John J. Starbuck* general partner
by *Samuel Sheff* general partner by *Marjorie S. Starbuck* general partner

I hereby certify that according to the records of this office, the property shown on this map is not subject to any special assessments which have not been paid in full.

Dated this 14th day of April 1953

Orval Addington
Street Superintendent

I hereby certify that a bond in the sum of \$250.00 has been filed with the Board of Supervisors of the County of Riverside, State of California conditioned upon the payment of all taxes, State, County, Municipal, or local, and all special assessments collected as taxes, which at the time of filing of this map with the County Recorder are a lien against said property but not yet payable, and said bond has been duly approved by said Board of Supervisors

Dated this 27th day of April 1953

G. A. Pequegnat County Clerk and ex-officio Clerk of the Board of Supervisors of the County of Riverside, Calif.

by *W. H. Beagle*
Deputy

I hereby certify that according to the records of this office as of this date there are no liens against the property shown on the within map for unpaid State, County, Municipal, or local taxes or assessments collected as taxes, except those taxes now a lien but not yet payable which are estimated to be \$250.00

Dated this 15th day of April 1953

V. M. Hyde
Deputy County Tax Collector

I hereby certify that I have examined the within map; that the subdivision shown hereon is substantially the same as it appeared on the tentative map and any approved alterations thereof; that all provisions of Chapter 128 (Subdivisions Map Act), Statutes of California, 1943, and of Ordinance No. 328 of the City of Riverside, California, and all amendments thereto, have been complied with; that plans and specifications for drains, drainage, sewers and drainage works sufficient to protect all lots in said subdivision from flood or overflow have been approved by me; that all easements for sewers and drains shown on said map are correct in form and contents and are approved; and I am satisfied that this map is technically correct.

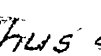
Dated this 16th day of April 1953.

M. H. Irvine
City Engineer

I hereby certify that this map is as approved by the Riverside City Planning Commission, at its meeting held on the 5th day of March 1953

J. V. Adams Sec.
Riverside City Planning Commission

Bearings are based on the center line of Indiana Ave shown as N56°00'E

3/4 iron pipe set at points shown thus: 
2x2 Redwood stakes set at all lot corners

State of California } ss
County of Riverside }
On this 14th day of April 1953 before me Dorothea De Laugh, a Notary Public in and for the County of Riverside, State of California personally appeared

Robert F. Starbuck, Marjorie S. Starbuck and Samuel Sheff,

known to me to be the partners of the partnership that executed the within instrument and acknowledged to me that such partnership executed the same.

IN WITNESS WHEREOF I have hereunto subscribed my hand and affixed my official seal on this the day and year first above mentioned

Dorothea De Laugh
Notary Public in and for the County of Riverside

STATE OF CALIFORNIA } ss
COUNTY OF RIVERSIDE }
I, W. G. Waite, City Clerk of the City of Riverside, California hereby certify that an undertaking satisfactory to the Council of said City, guaranteeing the construction of required street improvements in this subdivision was approved and filed in my office prior to the final acceptance of this subdivision map.

IN WITNESS WHEREOF, I have hereunto set my hand, and affixed my official seal of the City of Riverside, this 20th day of April 1953

W. G. Waite
City Clerk of the City of Riverside, Calif.

Resolved that this map consisting of one (1) sheet be and the same is hereby accepted as the official map of La Hacienda Rancho Tract; and the streets, pedestrian ways, easements shown hereon are accepted as public streets, pedestrian ways and easements and the City Clerk is hereby authorized and directed to attest said map by signing his name thereto, as City Clerk of the City of Riverside, California and to affix the official seal of said City thereto

I hereby certify that the foregoing resolution was adopted by the Mayor and Council of said City of Riverside California this 20th day of April 1953

W. G. Waite
City Clerk of the City of Riverside, California

I hereby certify that the subdivider named on this map has deposited with the Water Department of the City of Riverside, sufficient funds to cover the cost of installing all necessary fire hydrants, together with all water mains and laterals to the curb line on all streets shown on said map, and that all Public Utilities Easements, shown on this map are sufficient for all requirements of the Electric Light and Water Departments of the City of Riverside and for the Department of Public Utilities of said City.

Dated this 15th day of April 1953

A. J. Kennedy
Superintendent of Light and Water Department of the City of Riverside

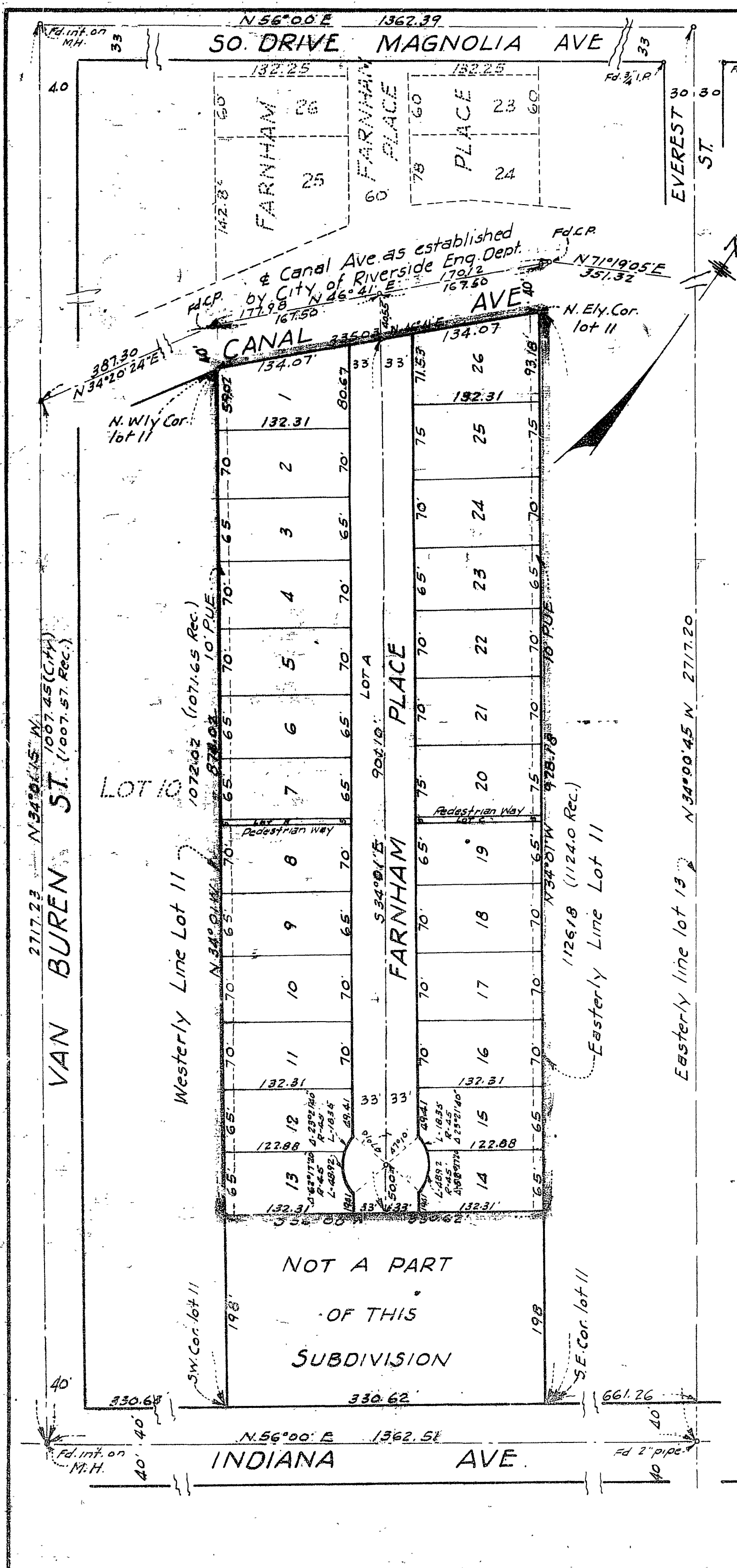
FILED

APRIL 19 1953
No. 20871 of 10:20 A.M.

JACK A. ROSS
COUNTY RECORDER

by *O. A. Mead*
Fee \$ 5.00

Filed by County Clerk
SUBDN GTEE-RTCo.



NOT A PART
OF THIS
SUBDIVISION

M.B. 26/17

BOOK 1

M.B. 26/17