

FILED

AUGUST 4, 1953
No. 26/54 at 3:00 PM.
JACK A. ROSS
COUNTY RECORDER
by Barbara B. Burt
DEPUTY
Fee \$5.00
Filed by County Clerk
SUB'D N. GTEE STICO.

M.B. 26/54

IN THE CITY OF RIVERSIDE LUTHER TRACT

Being a Subdivision of a portion of the SW 1/4 of the SE 1/4 of Section 33,
T.2S., R.5W., S.B.B. & M., Riverside County, Calif.

June, 1953

Donald J. McKee, Licensed Surveyor

Scale: 1"=100'

I hereby certify that a bond in the sum of \$350.00 has been executed and filed deposited with the Board of Supervisors of the County of Riverside, State of California, conditioned upon the payment of all taxes, State, County, Municipal or local, and all special assessments collected as taxes which at the time of filing of this map with the County Recorder are a lien against said property, but not yet payable, and said bond has been duly approved by said Board of Supervisors.

Dated this 3rd day of August 1953
by H. C. Begole
Deputy

G. A. Pequegnat
County Clerk and ex-officio
Clerk of the Board of Supervisors

We hereby certify that we are the owners of, or have some right, title or interest in the land included within the subdivision shown on the within map consisting of this one (1) sheet, that we are the only persons whose consent is necessary to pass a clear title to said land, and we hereby consent to the making of said map and subdivision as shown within the colored border line, and we hereby offer for dedication to public use for street purposes, Lot A, for public utilities, the five foot and ten foot easements shown by dotted lines and designated "5'-P.U.E." and "10'-P.U.E."

Fred C. Meinke Karin Meinke

I hereby certify that I am a Licensed Land Surveyor in the State of California, and that this map, consisting of one (1) sheet, correctly represents a survey made by me in June, 1953, and that all the monuments shown hereon actually exist and their positions are correctly shown

Donald J. McKee
Licensed Land Surveyor No. 1825

State of California }
County of Riverside } 55

On this 17th day of July, 1953, before me, the undersigned, a Notary Public in and for the County of Riverside, State of California, personally appeared KARIN MEINKE and FRED C. MEINKE, known to me to be the persons who executed the within instrument, and they acknowledged to me that they executed the same.

L. M. Wright
Notary Public in and for the County of Riverside, California

State of California }
County of Riverside } 55

I, W. G. Waite, City Clerk of the City of Riverside, California, hereby certify that an undertaking satisfactory to the Council of said City guaranteeing the construction of required street improvements in the subdivision, was approved and filed in my office prior to the final acceptance of this map.

IN WITNESS WHEREOF, I have hereunto set my hand and affixed the official seal of the City of Riverside this 28th day of July, 1953

W. G. Waite
City Clerk of the City of Riverside, California

I hereby certify that I have examined the within map; that the subdivision shown hereon is substantially the same as it appeared on the tentative map and any approved alterations thereof; that all provisions of Chapter 128 (Subdivision Map Act), Statutes of California, 1943, and of Ordinance No. 1328 of the City of Riverside, California, and all amendments thereto, have been complied with; that all plans and specifications for drains, drainage, sewer and drainage works sufficient to protect all lots in said subdivision from flood or overflow has been approved by me; that all easements for sewers and drains shown on said map are correct in form and contents and are approved, and I am satisfied that this map is technically correct.

Dated this 27th day of July 1953.
M. H. Swine
City Engineer

I hereby certify that the subdivider named on this map has deposited with the Water Department of the City of Riverside, sufficient funds to cover the cost of installing all necessary fire hydrants, together with all water mains and laterals to the curb lines on all streets shown on said map; and that all public utility easements shown on this map are sufficient for all requirements of the Electric Light and Water Departments of the City of Riverside and for the Department of Public Utilities of said City.

Dated this 20th day of July 1953
A. J. Kennedy
Sup't of Light and Water Departments of the City of Riverside, California

I hereby certify that according to the records of this office, the property shown on this map is not subject to any special assessments which have not been paid in full.

Dated this 20th day of July 1953.
Orval Collington
Street Superintendent

I hereby certify that this map is as approved by the Riverside City Planning Commission at its meeting held on the 20th day of July 1953.

by J. V. Adams
Secretary, Riverside City Planning Commission

RESOLVED: That this map, consisting of one (1) sheet, be, and the same is hereby accepted as the official map of "LUTHER TRACT" and the streets, and rights of way shown are hereby decreed as public streets and rights of way, and the City Clerk is hereby authorized and directed to attest said map by signing his name thereto as City Clerk of the City of Riverside, California, and to affix the official seal of said City thereto.

I hereby certify that the foregoing resolution was adopted by the Mayor and Council of Riverside this 28th day of July 1953

W. G. Waite
City Clerk of the City of Riverside, California

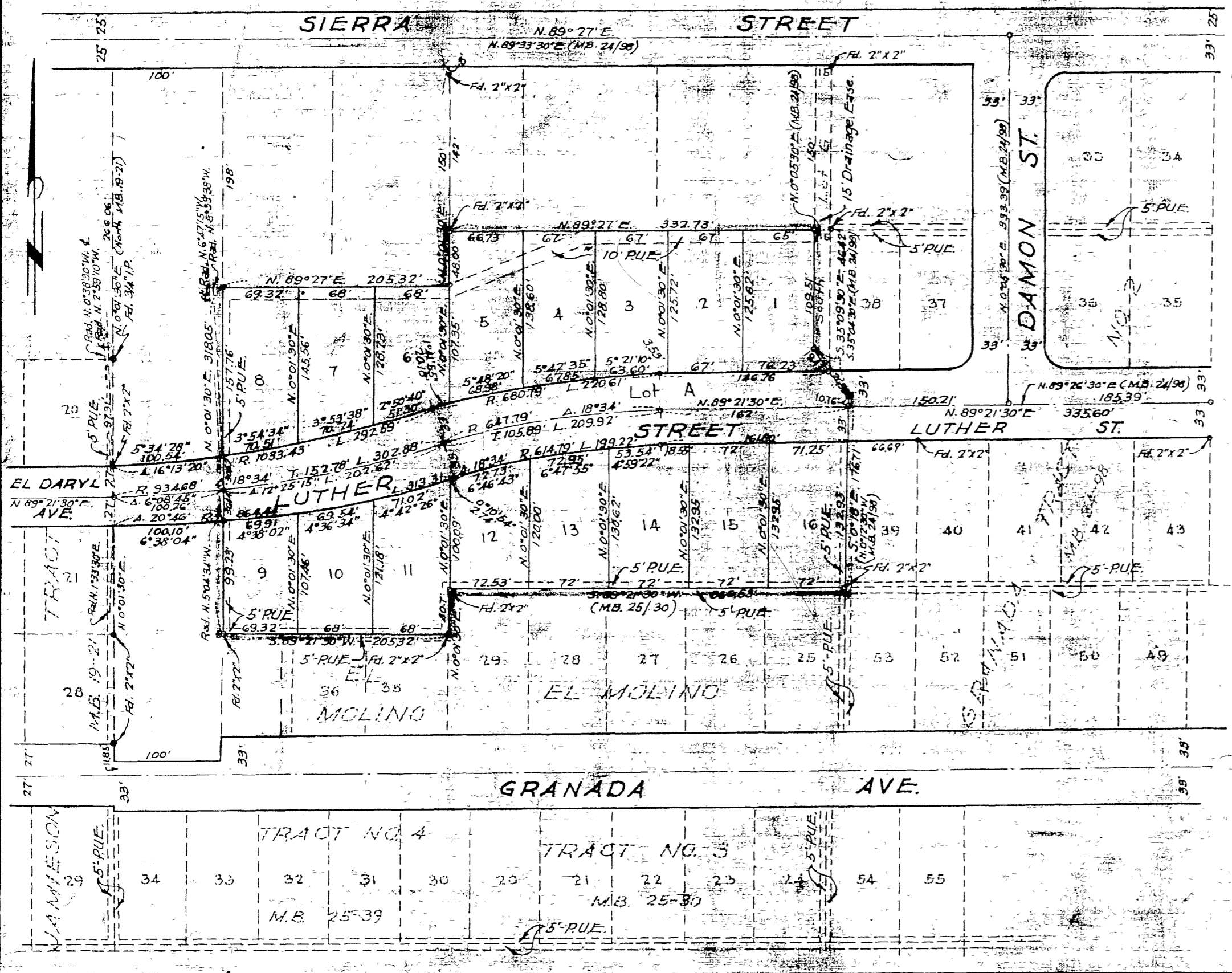
I hereby certify that according to the records of this office, the property shown on this map is not subject to any special assessments, bonds and for liens which have not been paid in full. This does not include any special assessments, the bonds of which have not become a lien upon said property.

Dated this 17th day of July 1953
J. A. Burt
Deputy

I hereby certify that according to the records of this office as of this date, there are no liens against the property shown on this map for unpaid State, County, Municipal or local taxes, or special assessments collected as taxes, except taxes and special assessments now a lien but not yet payable, which are estimated to be \$350.00

Dated this 20th day of July 1953
V. M. Hyde
County Tax Collector

NOTE: Bearings are based on the South line of Lots 12 to 16 incl. as being N 89° 21' 30" E, as shown on map of El Molino Tract No. 3, on file in Book 25, page 30; Records of Riverside County, California.
Iron pipe monument set, unless otherwise noted.
2"x2" Redwood stakes, tagged "L.S. 1825" set at lot corners.



M.B. 26/54