

26/55

FILED

AUG. 11 1953
No. 31611 at 4:10 PM
JACK A. ROSS
COUNTY RECORDER
by Barbara Gause
DEPUTY
Fee \$5.00
Filed by County Clerk.
SUBD'N. GTEE. STICO.

MB 26/55

IN THE CITY OF RIVERSIDE LAMBERT TRACT NO. 12

Being a Subdivision of a portion of Lot 40, Castleman's Addition, as shown by map on file in Book 3, page 19 of Maps, Records of San Bernardino County, California

June, 1953 Donald J. McKee, Licensed Surveyor Scale: 1 in = 100 ft.

I hereby certify that a bond in the sum of \$600.00 has been (executed and filed) deposited with the Board of Supervisors of the County of Riverside, State of California, conditioned upon the payment of all taxes, State, County, Municipal or local, and all special assessments collected as taxes, which at the time of filing of this map with the County Recorder are a lien against said property, but not yet payable and said bond has been duly approved by the Board of Supervisors.
Dated this 10th day of Aug 1953

by G. A. Pequegot
Deputy
County Clerk and ex officio
Clerk of the Board of Supervisors

We hereby certify that we are the owners of, or have some right, title or interest in, the land included within the subdivision shown on the within map consisting of this one (1) sheet. That we are the only persons whose consent is necessary to pass a clear title to said land, and we hereby consent to the making of said map and subdivision as shown within the colored border line, and we hereby offer for dedication to public use for street purposes, Lots A and E for public utilities, the front ten (10) easements shown by dotted lines and designated "5' P.U.E." and "10' P.U.E.", and Lot D for Pedestrian Way, and Lot E for Drainage & P.U.E. Security Title Insurance Company, a Corp. Trustee.

I hereby certify that I am a Licensed Land Surveyor in the State of California, and that the map, consisting of one (1) sheet, correctly represents a survey made by me in June, 1953, and that all the monuments shown hereon do in fact exist, and their positions are correctly shown.

Donald J. McKee
Licensed Land Surveyor No. 1825

State of California } ss.
County of Riverside }
On this 8th day of July, 1953, before me, the undersigned, a Notary Public in and for said County and State, personally appeared JOSEPH S. LONG and MARY F. NIELSEN, known to me to be the Vice Pres. and Asst. Sec., respectively, of the Corporation that executed the within Instrument, known to me to be the persons who executed the same on behalf of the Corporation therein named, and acknowledged to me that such Corporation executed the same
WITNESS my hand and official seal
Joseph S. Long
Notary Public in and for Riverside County, California

State of California } ss.
County of Riverside }
I, W.G. Waite, City Clerk of the City of Riverside, California, hereby certify that an undertaking satisfactory to the Council of said City guaranteeing the construction of required street improvements in the subdivision, was approved and filed in my office prior to the final acceptance of this map.
IN WITNESS WHEREOF, I have hereunto set my hand and affixed the official seal of the City of Riverside this 4th day of August, 1953.
W.G. Waite
City Clerk of the City of Riverside, California

I hereby certify that I have examined the within map, that the subdivision shown hereon is substantially the same as it appeared on the original map and any approved alterations thereof; that all provisions of Chapter 129 (Subdivision Map Act), Statutes of California, 1953, and of Ordinance No. 1229 of the City of Riverside, California, and all amendments thereto, have been complied with; that all dimensions and specifications for drains, drainage, sewer and drainage easements sufficient to protect all lots in said subdivision from flood or overflow has been approved by me; that all easements for sewers and drains shown on said map are correct in form and contents and are approved; and I am satisfied that this map is technically correct.
Date this 3rd day of Aug. 1953.
M. H. Juana
City Engineer

I hereby certify that the subdivider named on this map has deposited with the Water Department of the City of Riverside sufficient funds to cover the cost of installing all necessary fire hydrants, together with all water mains and laterals to the curb lines on all streets shown on said map; and that all public utility easements shown on this map are sufficient for all requirements of the Electric Light and Water Departments of the City of Riverside and for the Department of Public Utilities of said City.
Dated this 17th day of July, 1953
A. Kennedy
Supt. of Light and Water Departments of the City of Riverside, California.

I hereby certify that according to the records of this office, the property shown on this map is not subject to any special assessments which have not been paid in full.
Dated this 7th day of July 1953
Orval Adkins
Street Superintendent

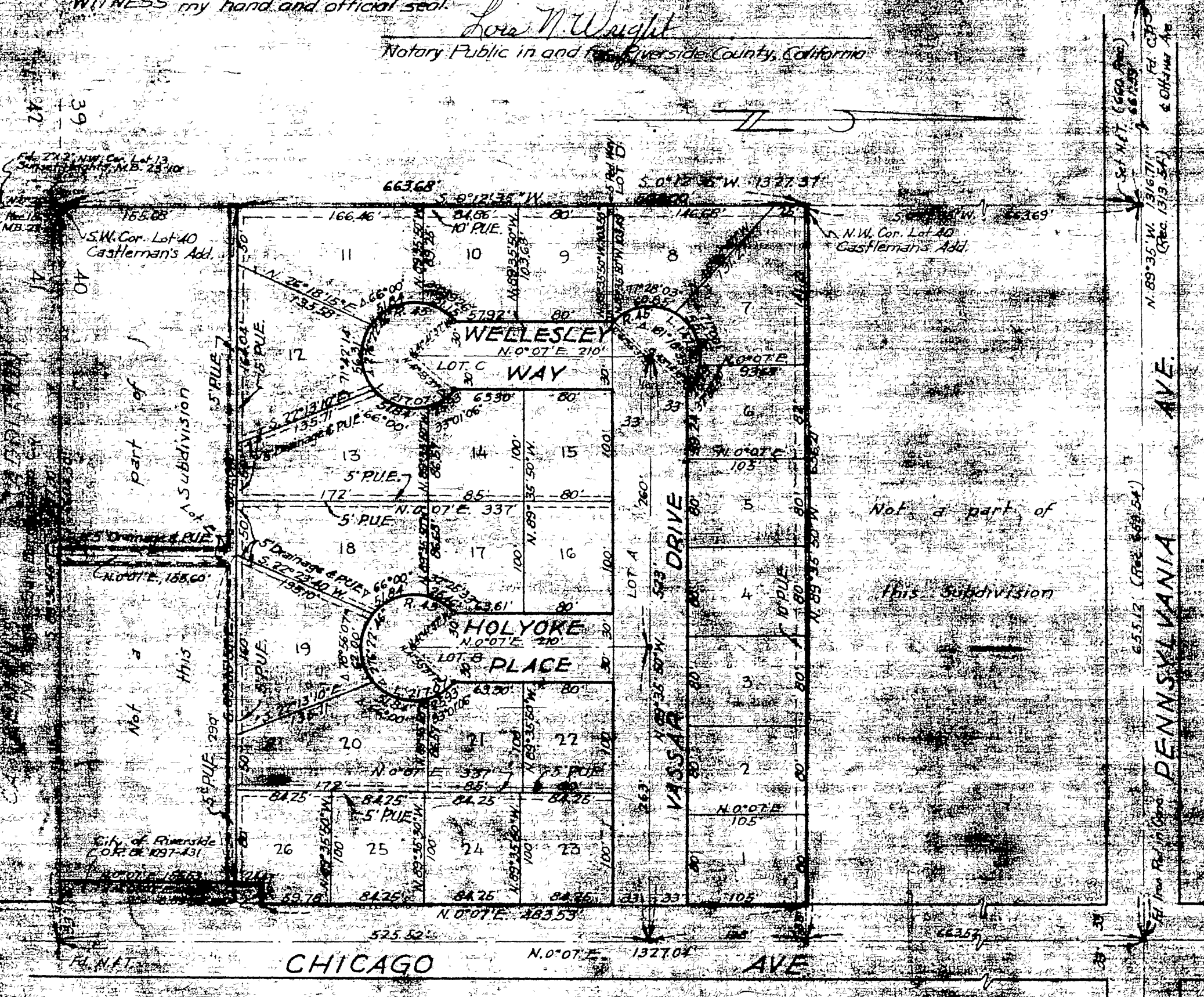
I hereby certify that this map is as approved by the Riverside City Planning Commission at its meeting held on the 2nd day of July 1953.
by J. V. Adams
Secretary, Riverside City Planning Commission

RESOLVED: That this map consisting of one (1) sheet, be and the same is hereby accepted as the official map of "LAMBERT TRACT NO. 12" and the streets and rights of way shown are hereby accepted as public streets and rights of way, and the City Clerk is hereby authorized and directed to attest said map by signing his name thereto as City Clerk of the City of Riverside, California, and to affix the official seal of said City thereon.
I hereby certify that the foregoing resolution was adopted by the Mayor and Council of Riverside this 2nd day of August, 1953.

W.G. Waite
City Clerk of the City of Riverside, California
I hereby certify that according to the records of this office, the property shown on this map is not subject to any special assessments, bonds and liens which have not been paid in full. This does not include any special assessments, the bonds of which have not become a lien upon said property.
Dated this 7th day of July 1953
J. H. Smith
City Treasurer

I hereby certify that according to the records of this office as of this date, there are no liens against the property shown on this map for unpaid State, County, Municipal or local taxes, or special assessments collected as taxes, except taxes and special assessments now a lien but not yet payable which are estimated to be \$ 600.
Dated this 7th day of July 1953
V. W. Hyde
County Tax Collector
Deputy

NOTE: Bearings are based on the center line of Chicago Avenue, as being N. 0° 07' E., as shown by map of Sunset Heights, filed in M.B. 23, page 10, Records of Riverside County, California.
2" iron pipe monument set, unless otherwise noted.
2"x2" redwood stakes, tagged "L.S. 1825" set at lot corners



MB 26/55