

IN THE CITY OF RIVERSIDE BLOCK HEIGHTS

Being a Subdivision of a portion of Lot A as shown on amended map of a portion of Monroe Heights filed in Book 19, page 9 of Maps and a portion of Parcels 1, 2, 3 and 4, as shown on Record of Survey on file in Book 19, page 37, Records of Riverside County, Calif.
May, 1953. Scale: 1"=100'

Donald J. McKee, Licensed Surveyor

Filed for Record
No. 5311 of 11:26 AM
JACK A. ROSS
COUNTY RECORDER
by O. G. WOOD
DEPUTY
Fee \$5.00
Filed in County Clerk's
SUBDIVISION MAPS
ST-100

I hereby certify that a bond in the sum of \$_____ has been (executed and filed) deposited with the Board of Supervisors of the County of Riverside, State of California, conditioned upon the payment of all taxes, State, County, Municipal or local, and all special assessments collected as taxes, which, at the time of filing of this map with the County Recorder, are a lien against said property, but not yet payable, and said bond has been duly approved by said Board of Supervisors.
Dated this _____ day of _____, 1953.

by _____ Deputy

G. A. Pequegnat
County Clerk and ex officio
Clerk of the Board of Supervisors

We hereby certify that we are the owners of, or have some right, title or interest in the land included within the subdivision shown on the within map consisting of this one (1) sheet, that we are the only persons whose consent is necessary to pass a clear title to said land, and we hereby consent to the making of said map and subdivision as shown within the colored border line, and we hereby offer for dedication to public use for street purposes Lots A and B for public utilities, the five and ten foot easements shown by dotted lines and designated "5'-PUE" and "10'-PUE".

E. R. Block

Margaret Block

I hereby certify that I am a Licensed Land Surveyor in the State of California and that this map, consisting of one (1) sheet, correctly represents a survey made by me in May, 1953, and that all the monuments shown hereon actually exist and their positions are correctly shown.

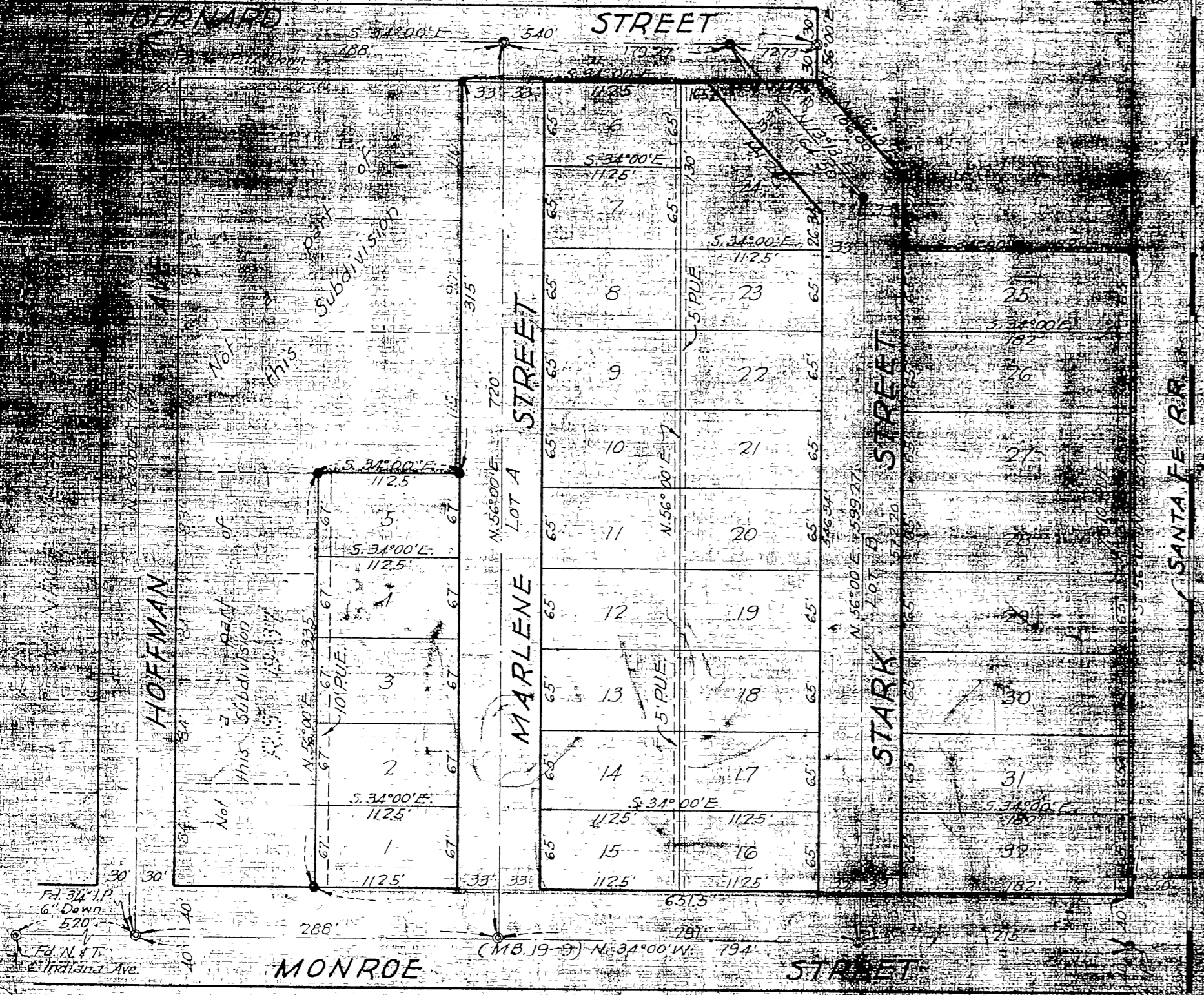
Donald J. McKee
Licensed Land Surveyor

I hereby certify that I have examined the within map and subdivision shown hereon and find it substantially the same as that shown on the map and any approved alterations thereof, that all provisions of the Subdivision Map Act, Statutes of California, 1942, and amendments thereof of the City of Riverside, California, and all amendments thereto, in connection with that all plans and specifications for drains, sewers, water, gas, electric and other public utility easements shown on this map are correct and approved by the Department of Public Works, City of Riverside, California, and that this map is a true and correct copy of the original as filed.

I hereby certify that I have examined the within map and subdivision shown hereon and find it substantially the same as that shown on the map and any approved alterations thereof, that all provisions of the Subdivision Map Act, Statutes of California, 1942, and amendments thereof of the City of Riverside, California, and all amendments thereto, in connection with that all plans and specifications for drains, sewers, water, gas, electric and other public utility easements shown on this map are correct and approved by the Department of Public Works, City of Riverside, California, and that this map is a true and correct copy of the original as filed.

I hereby certify that according to the records of the City of Riverside, California, the property shown on this map is not subject to any special assessments or taxes which have not been paid in full.
Dated this _____ day of _____, 1953.

I hereby certify that this map and subdivision shown hereon are correct and approved by the Department of Public Works, City of Riverside, California, and that this map is a true and correct copy of the original as filed.



MB 26/70

MB 26/70