

26/95

OAK MANOR TRACT UNIT NO. 2

BEING A SUBDIVISION OF A PORTION OF LOT 36, S.C.C.A. LANDS.
NOVEMBER 1953 M.E. 7-3, REC. S.E. CO. CALIF. SCALE 1"=100'
J.F. DAVIDSON, C.E.

FILED

Jan. 15, 1954

NO. 10 AT 4:10 P.M.

Jack A. Ross
COUNTY RECORDER
O.G. Deal
DEPUTY
Fee \$1.00

FILED BY RIVERSIDE TITLE CO.
SUBBON CITY-RT. CO.

M.B. 26/95

I hereby certify that I have examined the within map; that the subdivision shown hereon is substantially the same as it appeared on the tentative map and any approved alterations thereof; that all provisions of Chapter 128 (Subdivision Map Act), Statutes of California, 1943 and of Ordinance 1328 of the City of Riverside, California, and all amendments thereto, have been complied with; that plans and specifications for drains, drainage, sewer and drainage works sufficient to protect all lots in said subdivision from flood or overflow have been approved by me; that all easements for sewers and drains shown on said map are correct in form and contents and are approved; and I am satisfied that this map is technically correct.
Dated January 12th, 1954.

Mr. R. Irvine
City Engineer

We hereby certify that we are the owners of or have some right in the or interest in the land included within the subdivision shown on the annexed map consisting of one (1) sheet; that we are the only persons whose consent is necessary to pass a deed title to said land; that we hereby consent to the making of said map and subdivision as shown within the colored line and we hereby offer for dedication for public use lots A & B for street purposes and for construction and maintenance of all public utilities the line and easement shown by broken lines and designated as P.U.L.

James M. Davidson
John J. Davidson
J.F. Davidson

STATE OF CALIFORNIA }
COUNTY OF RIVERSIDE }
I, H.G. Wolfe, City Clerk of the City of Riverside, California, hereby certify that an undertaking satisfactory to the Council of said City averting the construction of required street improvements in this subdivision was approved and filed in my office prior to the final acceptance of this subdivision map.

IN WITNESS WHEREOF, I have hereunto set my hand and affixed the official seal of the City of Riverside, California, this 15th day of January, 1954.

H.G. Wolfe
City Clerk of the City of Riverside, California

I hereby certify that the within map and subdivision is substantially the same as it appeared on the tentative map and any approved alterations thereof; that all provisions of Chapter 128 (Subdivision Map Act), Statutes of California, 1943 and of Ordinance 1328 of the City of Riverside, California, and all amendments thereto, have been complied with; that plans and specifications for drains, drainage, sewer and drainage works sufficient to protect all lots in said subdivision from flood or overflow have been approved by me; that all easements for sewers and drains shown on said map are correct in form and contents and are approved; and I am satisfied that this map is technically correct.
Dated January 12th, 1954.

We hereby certify that we are the owners of or have some right in the or interest in the land included within the subdivision shown on the annexed map consisting of one (1) sheet; that we are the only persons whose consent is necessary to pass a deed title to said land; that we hereby consent to the making of said map and subdivision as shown within the colored line and we hereby offer for dedication for public use lots A & B for street purposes and for construction and maintenance of all public utilities the line and easement shown by broken lines and designated as P.U.L.

I hereby certify that the within map and subdivision is substantially the same as it appeared on the tentative map and any approved alterations thereof; that all provisions of Chapter 128 (Subdivision Map Act), Statutes of California, 1943 and of Ordinance 1328 of the City of Riverside, California, and all amendments thereto, have been complied with; that plans and specifications for drains, drainage, sewer and drainage works sufficient to protect all lots in said subdivision from flood or overflow have been approved by me; that all easements for sewers and drains shown on said map are correct in form and contents and are approved; and I am satisfied that this map is technically correct.
Dated January 12th, 1954.

We hereby certify that we are the owners of or have some right in the or interest in the land included within the subdivision shown on the annexed map consisting of one (1) sheet; that we are the only persons whose consent is necessary to pass a deed title to said land; that we hereby consent to the making of said map and subdivision as shown within the colored line and we hereby offer for dedication for public use lots A & B for street purposes and for construction and maintenance of all public utilities the line and easement shown by broken lines and designated as P.U.L.

I hereby certify that the within map and subdivision is substantially the same as it appeared on the tentative map and any approved alterations thereof; that all provisions of Chapter 128 (Subdivision Map Act), Statutes of California, 1943 and of Ordinance 1328 of the City of Riverside, California, and all amendments thereto, have been complied with; that plans and specifications for drains, drainage, sewer and drainage works sufficient to protect all lots in said subdivision from flood or overflow have been approved by me; that all easements for sewers and drains shown on said map are correct in form and contents and are approved; and I am satisfied that this map is technically correct.
Dated January 12th, 1954.

STATE OF CALIFORNIA }
COUNTY OF RIVERSIDE }
I, H.G. Wolfe, City Clerk of the City of Riverside, California, hereby certify that an undertaking satisfactory to the Council of said City averting the construction of required street improvements in this subdivision was approved and filed in my office prior to the final acceptance of this subdivision map.

IN WITNESS WHEREOF, I have hereunto set my hand and affixed the official seal of the City of Riverside, California, this 15th day of January, 1954.

H.G. Wolfe
City Clerk of the City of Riverside, California

I hereby certify that the within map and subdivision is substantially the same as it appeared on the tentative map and any approved alterations thereof; that all provisions of Chapter 128 (Subdivision Map Act), Statutes of California, 1943 and of Ordinance 1328 of the City of Riverside, California, and all amendments thereto, have been complied with; that plans and specifications for drains, drainage, sewer and drainage works sufficient to protect all lots in said subdivision from flood or overflow have been approved by me; that all easements for sewers and drains shown on said map are correct in form and contents and are approved; and I am satisfied that this map is technically correct.
Dated January 12th, 1954.

We hereby certify that we are the owners of or have some right in the or interest in the land included within the subdivision shown on the annexed map consisting of one (1) sheet; that we are the only persons whose consent is necessary to pass a deed title to said land; that we hereby consent to the making of said map and subdivision as shown within the colored line and we hereby offer for dedication for public use lots A & B for street purposes and for construction and maintenance of all public utilities the line and easement shown by broken lines and designated as P.U.L.

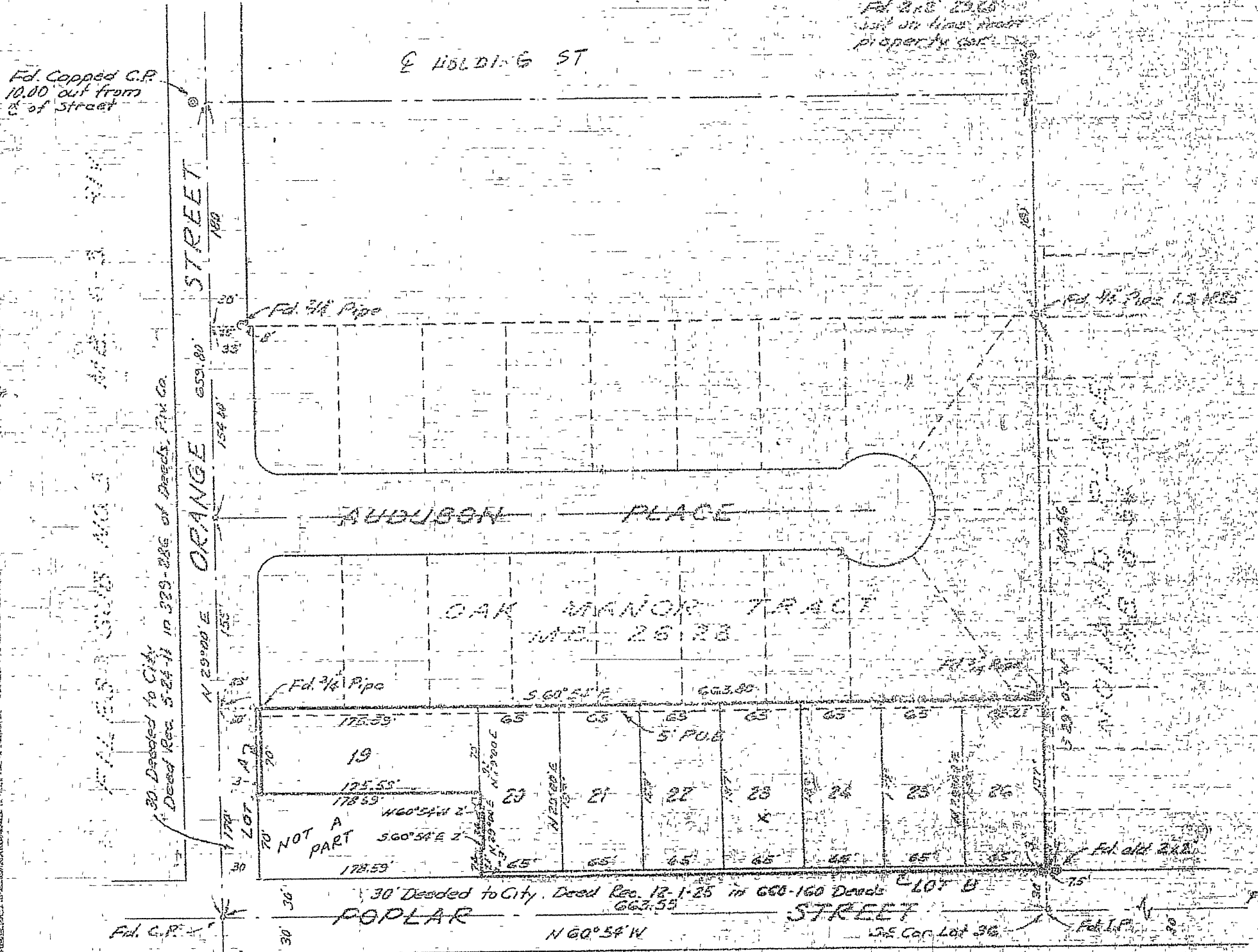
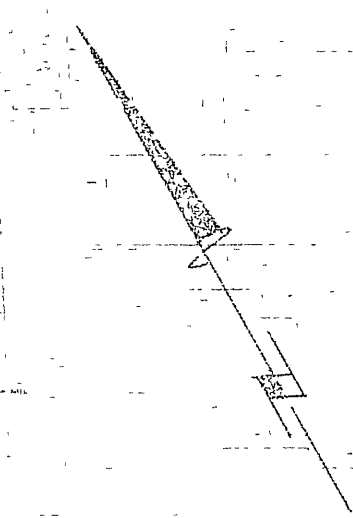
I hereby certify that the within map and subdivision is substantially the same as it appeared on the tentative map and any approved alterations thereof; that all provisions of Chapter 128 (Subdivision Map Act), Statutes of California, 1943 and of Ordinance 1328 of the City of Riverside, California, and all amendments thereto, have been complied with; that plans and specifications for drains, drainage, sewer and drainage works sufficient to protect all lots in said subdivision from flood or overflow have been approved by me; that all easements for sewers and drains shown on said map are correct in form and contents and are approved; and I am satisfied that this map is technically correct.
Dated January 12th, 1954.

We hereby certify that we are the owners of or have some right in the or interest in the land included within the subdivision shown on the annexed map consisting of one (1) sheet; that we are the only persons whose consent is necessary to pass a deed title to said land; that we hereby consent to the making of said map and subdivision as shown within the colored line and we hereby offer for dedication for public use lots A & B for street purposes and for construction and maintenance of all public utilities the line and easement shown by broken lines and designated as P.U.L.

I hereby certify that the within map and subdivision is substantially the same as it appeared on the tentative map and any approved alterations thereof; that all provisions of Chapter 128 (Subdivision Map Act), Statutes of California, 1943 and of Ordinance 1328 of the City of Riverside, California, and all amendments thereto, have been complied with; that plans and specifications for drains, drainage, sewer and drainage works sufficient to protect all lots in said subdivision from flood or overflow have been approved by me; that all easements for sewers and drains shown on said map are correct in form and contents and are approved; and I am satisfied that this map is technically correct.
Dated January 12th, 1954.

We hereby certify that we are the owners of or have some right in the or interest in the land included within the subdivision shown on the annexed map consisting of one (1) sheet; that we are the only persons whose consent is necessary to pass a deed title to said land; that we hereby consent to the making of said map and subdivision as shown within the colored line and we hereby offer for dedication for public use lots A & B for street purposes and for construction and maintenance of all public utilities the line and easement shown by broken lines and designated as P.U.L.

I hereby certify that the within map and subdivision is substantially the same as it appeared on the tentative map and any approved alterations thereof; that all provisions of Chapter 128 (Subdivision Map Act), Statutes of California, 1943 and of Ordinance 1328 of the City of Riverside, California, and all amendments thereto, have been complied with; that plans and specifications for drains, drainage, sewer and drainage works sufficient to protect all lots in said subdivision from flood or overflow have been approved by me; that all easements for sewers and drains shown on said map are correct in form and contents and are approved; and I am satisfied that this map is technically correct.
Dated January 12th, 1954.



M.B. 26/95

M.B. 26/95