

MONTEREY MANOR

FILED
Feb. 11, 1954

No. _____ of 10:20 AM
JACK A ROSS
COUNTY RECORDER
by Barbara Deane
DEPUTY
Fee \$ 5 00
Filed by County Clerk
SUB'D N GTEE. STICO

LOCATED WITHIN THE CITY OF RIVERSIDE

BEING A SUBDIVISION OF A PORTION OF THE NW 1/4 OF SECTION 35
T2S. R 5 W., S.B.B.E.M., CITY OF RIVERSIDE, CALIFORNIA, AS SHOWN ON
RECORD OF SURVEY RECORDED APRIL 14, 1953 IN BOOK 19 PAGE 56; AND
LOT 9, MONTEREY HEIGHTS AS SHOWN ON THE FINAL MAP RECORDED MAY
20, 1936 IN BOOK 18 PAGE 95 OF RECORDS OF RIVERSIDE COUNTY,
CALIFORNIA.

DECEMBER, 1953.

SCALE: 1" = 100'

TOTAL 14.542 ACRES
BOYLE ENGINEERING

We hereby certify that We are the owners of or have some right, title or interest in the land included within the subdivision shown on the annexed map consisting of two (2) sheets; that We are the only parties whose consent is necessary to pass a clear title to said land; that We hereby consent to the making of said map and subdivision as shown within the colored border line and We hereby offer for dedication for public use, Lots "A, B, & C" for street purposes; Lot "D" for walkway, drainage, and sewer purposes; and for the construction and maintenance of all Public Utilities the five and ten foot easements, all indicated by broken lines and designated as "5' PUE," "10' PUE," and "Angle C. PUE" Also PUE and drainage; "PUE, sewer and drainage," "T. & sewer"

Monterey Construction Company a Partnership
David Young Builder Inc., a Corporation, a Partner

By: David Young Pres. By: Mike Hoover Secy

Sierra Homes Inc., a Corporation, a Partner

By: Mel Staverin President

By: Muriel Gregory Secretary

State of California } ss
County of Riverside }

On this 18th day of Jan. 1954 before me _____ a Notary Public in and for said County and State, personally appeared Mel Staverin known to me to be the President and Mike Hoover known to me to be the Secretary of Sierra Homes Inc., the Corporation that executed the within instrument on behalf of the Corporation herein named and acknowledged to me that such Corporation executed the same as a partner.

Lore N. Wright
Notary Public in and for said County and State

My Commission expires 7-22-54

State of California } ss
County of Riverside }

On this 18th day of Jan. 1954 before me _____ a Notary Public in and for said County and State, personally appeared David Young known to me to be President and M. Hoover known to me to be Secretary of David Young Builder Inc., the Corporation that executed the within instrument on behalf of the Corporation herein named and acknowledged to me that such Corporation executed the same as a partner.

Lore N. Wright
Notary Public in and for said County and State

My Commission expires 7-22-54

I hereby certify that the subdivider named on this map has deposited with the Water Department of the City of Riverside, sufficient funds to cover the cost of installing all necessary fire Hydrants, together with all Water Mains and laterals to the curb line on all streets shown on said map, and that all PUE shown on this map are sufficient for all requirements of the Electric Light and Water Departments of the City of Riverside and for the Department of Public Utilities of said City.

Dated this 20th day of January 1954

A. J. Kennedy
Superintendent of Light and Water Department City of Riverside

I hereby certify that according to the records of this office as of this date the property shown on this map is not subject to any special assessments, bonds, and/or liens which have not been paid in full.

This certificate does not include any special assessments the bonds of which have not become a lien upon said property

Dated this 29th day of January 1954

J. Smith
City Treasurer

I hereby certify that a bond in the sum of _____ has been executed and been filed with the Board of Supervisors of the County of Riverside, California, conditioned upon the payment of all taxes, State, County, City or local, and all special assessments collected as taxes, which at the time of filing of this map with the County Recorder are a lien against said property, but not yet payable, and said bond has been duly approved by said Board of Supervisors.

Dated this _____ day of _____ 1954

By: _____ Deputy
G.A. Pequegnat, County Clerk and Ex-Officio Clerk of the Board of Supervisors

I hereby certify that according to the records of this office as of this date there are no liens against the property shown on this map for unpaid State, County, City or local taxes or special assessments collected as taxes

Dated this 19th day of January 1954

By: W. Hyde Deputy
V.M. Hyde
County Tax Collector

I hereby certify that according to the records of this office the property shown on this map is not subject to any special assessments which has not been in full.

Dated this 29th day of January 1954

Orval Phillips
Street Superintendent

RESOLVED: That this map consisting of two (2) sheets be, and the same is hereby accepted as the official map of MONTEREY MANOR and the Streets, Walkways and Easements are accepted as Public Streets, Walkways and Easements, and the City Clerk is hereby authorized and directed to attest said map by signing his name thereto as City Clerk of the City of Riverside, California, and to affix the Official Seal of said City thereto.

I hereby certify that the foregoing resolution was adopted by the Mayor and the Council of the City of Riverside this _____ day of Feb., 1954

By: _____ Deputy
W. Waite
City Clerk of the City of Riverside, California

STATE OF CALIFORNIA } ss
COUNTY OF RIVERSIDE }

I, W.G. Waite, City Clerk of the City of Riverside, California, hereby certify that an undertaking satisfactory to the Council or said City guaranteeing the construction of required street improvements in this subdivision was approved and filed in my office prior to the final acceptance of this subdivision map.

IN WITNESS WHEREOF, I have hereunto set my hand and affixed this Official Seal of the City of Riverside, California, this _____ day of Feb., 1954

By: _____ Deputy
W. Waite
City Clerk of the City of Riverside, California

I hereby certify that I have examined the within map; that the subdivision shown hereon is substantially the same as it appeared on the tentative map and any approved alterations thereof; that all provisions of Chapter 128 (Subdivision Map Act), Statutes of California, 1943, and of Ordinance No. 1328 of the City of Riverside, California, and all amendments thereto, have been complied with; that plans and specifications for drains, drainage sewer and drainage works sufficient to protect all lots in said subdivision from flood or over-flow have been approved by me; that all easements for sewers and drains shown on said map are correct in form and contents and are approved; and I am satisfied that this map is technically correct.

Dated this 8th day of Feb. 1954

M. H. Swain
City Engineer

I hereby certify that this map is as approved by the Riverside City Planning Commission at its meeting held on the _____ day of January, 1954

J. W. Adams Secretary
Riverside City Planning Commission

I hereby certify that I am a Licensed Land Surveyor of the State of California and that this map consisting of two (2) sheets correctly represents a survey made under my supervision during September, 1953, that all monuments shown actually exist and their positions are correctly shown.

Miner K. Paul
Licensed Land Surveyor - L.S. No. 2389

M.B. 2712

MONTEREY MANOR

BEING A SUBDIVISION OF A PORTION OF THE NW 1/4 OF SECTION 35 T.2.S. R.5 W. S. 12 E. CITY AND RIVERSIDE, CALIFORNIA, AS SHOWN ON RECORD OF SURVEY RECORDED IN BOOK 13 PAGE 363 AND LOT 9, MONTEREY HEIGHTS AS SHOWN ON THE FINAL MAP RECORDED MAY 20, 1936 IN BOOK 18 PAGE 983 IN RECORDS OF RIVERSIDE COUNTY, CALIFORNIA, RIVERSIDE COUNTY, CALIFORNIA.

SCALE: 1"=100'

BOYLE ENGINEERING
327 S. Spurgeon Bldg.
Santa Ana, Calif.

TOTAL 14.542 ACRES DATE: DECEMBER, 1953

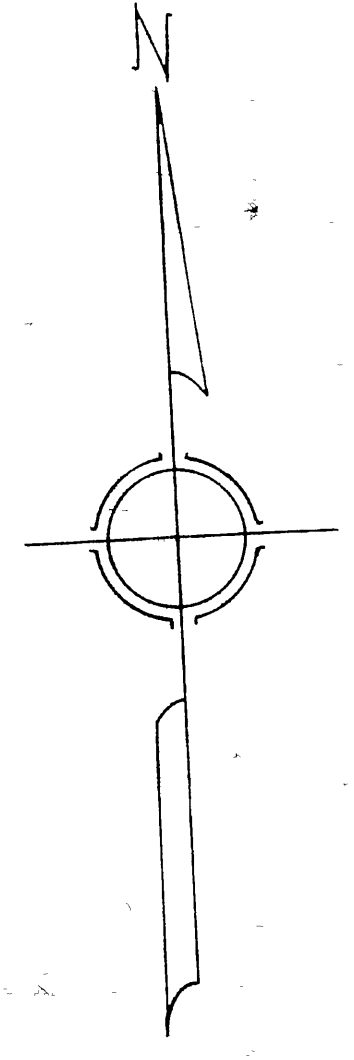
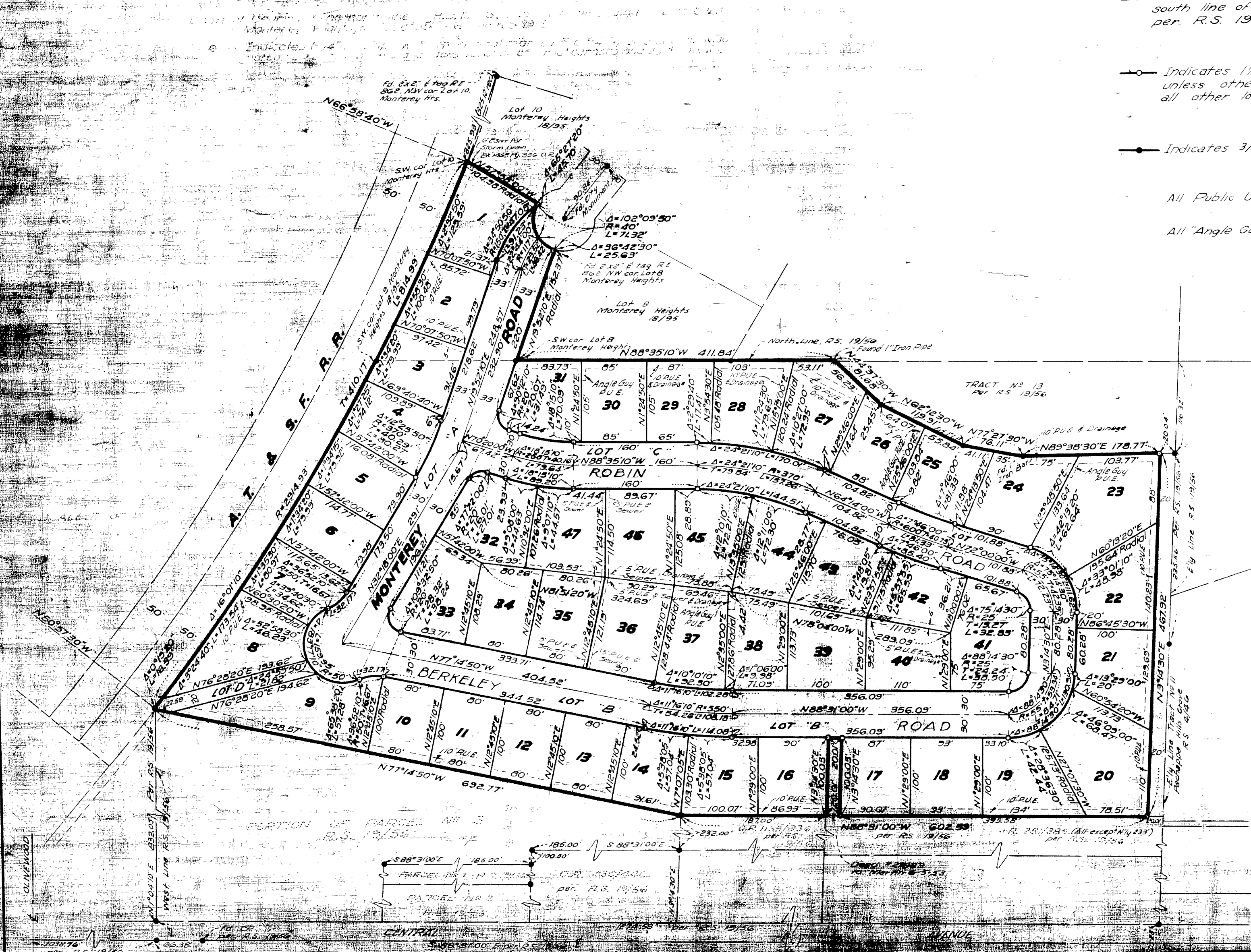
Basis of Bearings: The north line of RS 19-56, also being the south line of Lots 8 & 9 of Monterey Heights as N 88° 35' 10" W per R.S. 19-56.

—○— Indicates 1/4" Iron Pipe with copper seal marked L.S. 2353 set unless otherwise noted. 2"x2" RW stakes and tacks set at all other lot corners and angle points.

—●— Indicates 3/4" Iron Pipe Found, unless otherwise noted.

All Public Utility Easements (PUE) are 10ft in width

All "Angle Guy PUE" are 10ft in width and 25 ft in length.



Scale: 1" = 100'

M.B. 27/3

M.B. 27/3

Block No. 1

M.B. 27/3