

M.B. 27/14

FILED
MAR 16 1954

No. _____ at 3:30 P.M.
JACK A ROSS
COUNTY RECORDER
by O.A. Wheat
DEPUTY
Fee \$5.00
Filed by County Clerk
SUBDIVISION - RTG

IN THE CITY OF RIVERSIDE CALIFORNIA MANOR

Being a Subdivision of a por of Lots 4 and 5, Bl 15, Lands of R L & I Co, as shown by map on file in Book 1, page 70 of Maps, Records of San Bernardino County, Calif
February, 1954
Scale 1"=100'

Donald J McKee Lic Surveyor

We hereby certify that we are the owners of or have some right title or interest in the land included within the subdivision shown on the within map consisting of one (1) sheet that we are the only persons whose consent is necessary to pass a clear title to said land and we hereby consent to the making of said map and subdivision as shown within the colored border lines and we hereby offer for dedication to public use for street purposes Lots A & B and for Pedestrian Ways Lots C and D and for construction and maintenance of Public Utilities the five foot easement shown by dotted line and designated 5 PUE and for Drainage & construction and maintenance of Public Utilities the ten foot easement shown by dotted line and designated 10-Drainage & PUE

Walter & Juana Beatrice Wilkinson Dawes
also known as Beatrice W Dawes

hereby certify that I am a Licensed Land Surveyor in the State of California and that this map consisting of one (1) sheet correctly represents a survey made by me in February 1954 and that all the monuments shown hereon actually exist and their positions are correctly shown

Donald J McKee
Licensed Land Surveyor No 1825

I hereby certify that I have examined the within map that the subdivision shown hereon is substantially the same as it appeared on the tentative map and any approved alterations thereof that all provisions of Chapter 128 (Subdivision Map Act) Statutes of California 1943 and of Ordinance No 1328 of the City of Riverside, California and all amendments thereto have been complied with that all plans and specifications for drains drainage sewer and drainage works sufficient to protect all lots in this subdivision from flood or overflow has been approved by me that all easements for sewers and drains shown on said map are correct in form and contents and are approved and I am satisfied that this map is technically correct
Dated this 9th day of March 1954

M H Irvine
City Engineer

I hereby certify that according to the records of this office the property shown on this map is not subject to any special assessments which have not been paid in full
Dated this 8 day of MAY 1954

Orval Addington
Street Superintendent

I hereby certify that the subdivider named on this map has deposited with the Water Department of the City of Riverside sufficient funds to cover the cost of installing all necessary fire hydrants together with all water mains and laterals to the curb lines on all streets shown on said map and that all public utility easements shown on this map are sufficient for all requirements of the Electric Light and Water Departments of the City of Riverside and for the Department of Public Utilities of said City
Dated this 8th day of March 1954

A Kennedy
Supt of Light and Water Departments of the City of Riverside, California

I hereby certify that this map is as approved by the Riverside City Planning Commission at its meeting held on the 4th day of MARCH 1954

by J V Adams
Secretary Riverside City Planning Commission

State of California } ss
County of Riverside }
On this 8th day of March 1954 before me the undersigned, a Notary Public in and for the County of Riverside State of California personally appeared Walter E Dawes and Beatrice Wilkinson Dawes known to me to be the persons who executed the within instrument and they acknowledged to me that they executed the same
WITNESS my hand and official seal

Walter E Dawes
Notary Public in and for the County of Riverside Calif

State of California } ss
County of Riverside }
I WG Waite City Clerk of the City of Riverside California hereby certify that an undertaking satisfactory to the Council of said City guaranteeing the construction of required street improvements in the subdivision was approved and filed in my office prior to the final acceptance of this map
IN WITNESS WHEREOF I have hereunto set my hand and affixed the official seal of the City of Riverside this 9th day of March 1954

W Waite
City Clerk of the City of Riverside Calif

RESOLVED That this map consisting of one (1) sheet, be and the same is hereby accepted as the official map of California Manor and the streets and rights of way shown are hereby accepted as public streets and rights of way and the City Clerk is hereby authorized and directed to attest said map by signing his name thereto as City Clerk of the City of Riverside California and to affix the official seal of said City thereto

I hereby certify that the foregoing resolution was adopted by the Mayor and Council of the City of Riverside this 9th day of March 1954
W Waite
City Clerk of the City of Riverside Calif

I hereby certify that according to the records of this office, the property shown on this map is not subject to any special assessments bonds and/or liens which have not been paid in full This does not include any special assessments the bonds of which have not become a lien upon said property
Dated this 5th day of MARCH 1954

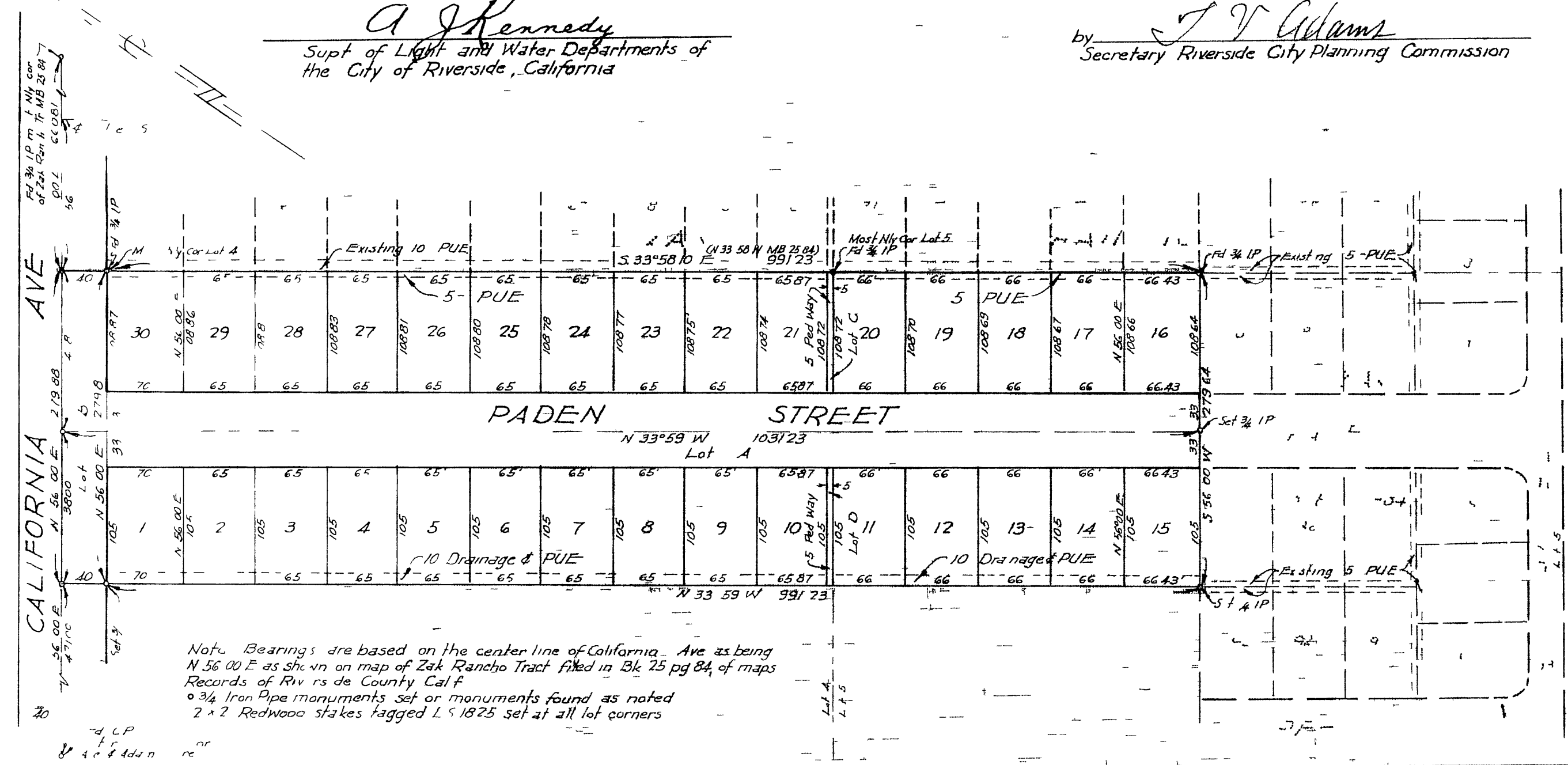
J J Jones
City Treasurer

I hereby certify that a bond in the sum of \$500.00 has been (executed and filed) deposited with the Board of Supervisors of the County of Riverside State of California conditioned upon the payment of all taxes State County Municipal or local and all special assessments collected as taxes, which at the time of filing of this map with the County Recorder are a lien against said property but not yet payable, and said bond has been duly approved by said Board of Supervisors
Dated this 15th day of MARCH 1954

by G A Pequegnat
Deputy
County Clerk and ex officio
Clerk of the Board of Supervisors

I hereby certify that according to the records of this office as of this date, there are no liens against the property shown on this map for unpaid State County Municipal or local taxes or special assessments collected as taxes except taxes and special assessments now a lien but not yet payable which are estimated to be \$500.00
Dated this 8th day of March 1954

by V M Hyde
Deputy
County Tax Collector



M.B. 27/14

Book 116 1 MB 27/14