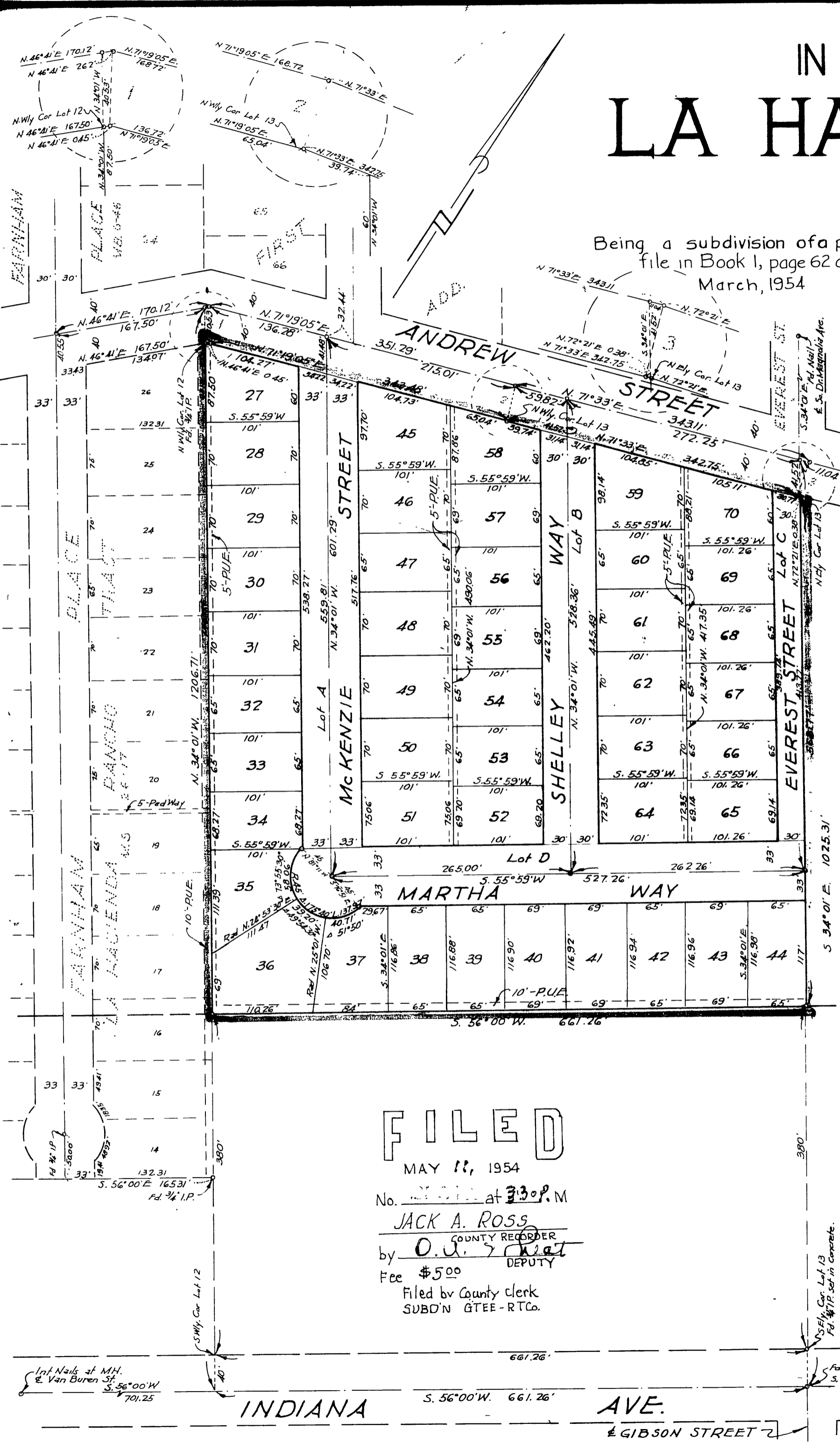


IN THE CITY OF RIVERSIDE LA HACIENDA RANCHO TRACT NO. 2

Being a subdivision of a portion of Lots 12 & 13, Block 25, Village of Arlington, as shown by map on file in Book 1, page 62 of Maps, Records of San Bernardino County, California
March, 1954
Scale: 1 in. = 100 ft.

Donald J. McKee, Licensed Surveyor



FILED
MAY 11, 1954
No. _____ at 3:30 P.M.
JACK A. ROSS
COUNTY RECORDER
by **O. J. Heat**
DEPUTY
Fee \$5.00
Filed by County Clerk
SUBD'N GTEE-RTCo.

We hereby certify that we are the owners of, or have some right, title or interest in the land included within the subdivision shown on the within map consisting of one (1) sheet, that we are the only persons whose consent is necessary to pass a clear title to said land, and we hereby consent to the making of said map and subdivision as shown within the colored border line and we hereby offer for dedication to public use for street purposes, Lots A, B, C, and D, and for construction and maintenance of all Public Utilities, the five and ten foot easements shown by dotted lines and designated "5'-P.U.E." and "10'-P.U.E."

STARBUCK CONSTRUCTION COMPANY, a general partnership
by John D. Starbuck General Partner
by Samuel Sheff General Partner
by Marjorie S. Starbuck General Partner

I hereby certify that I am a Licensed Land Surveyor in the State of California, and that this map, consisting of one (1) sheet, correctly represents a survey made by me in November, 1953, and that all the monuments shown hereon actually exist and their positions are correctly shown.

Donald J. McKee
Licensed Land Surveyor No. 1825.

I hereby certify that I have examined the within map, that the subdivision shown hereon is substantially the same as it appeared on the tentative map and any approved alterations thereof, that all provisions of Chapter 128, (Subdivision Map Act) Statutes of California, 1943, and of Ordinance No. 1328, of the City of Riverside, California, and all amendments thereto, have been complied with; that all plans and specifications for drains, drainage, sewer and drainage works sufficient to protect all lots in this subdivision from flood or overflow has been approved by me; that all easements for sewers and drains shown on said map are correct in form and contents and are approved; and I am satisfied that this map is technically correct. Dated this 4th day of May, 1954.

M. H. Irvine
City Engineer.

I hereby certify that the subdivider named on this map has deposited with the Water Department of the City of Riverside, sufficient funds, to cover the cost of installing all necessary fire hydrants, together with all water mains and laterals to the curb lines on all streets shown on said map; and that all public utility easements shown on this map are sufficient for all requirements of the Electric Light and Water Departments of the City of Riverside and for the Department of Public Utilities of said City. Dated this 3rd day of May, 1954.

A. J. Kennedy
Supt. of Light and Water Departments of the City of Riverside, Calif.

I hereby certify that according to the records of this office, the property shown on this map is not subject to any special assessments which have not been paid in full. Dated this 4th day of April, 1954.

Orval Arlington
Street Superintendent

I hereby certify that this map is as approved by the Riverside City Planning Commission at its meeting held on the 15th day of April, 1954.

by T. V. Adams
Secretary, Riverside City Planning Commission

I hereby certify that a bond in the sum of \$500.00 has been (executed and filed) deposited with the Board of Supervisors of the County of Riverside, State of California, conditioned upon the payment of all taxes, State, County, Municipal or local, and all special assessments collected as taxes, which at the time of filing of this map with the County Recorder, are a lien against said property, but not yet payable, and said bond has been duly approved by said Board of Supervisors.
Dated this 10th day of May, 1954.

by A. C. Beagle Deputy
G. A. Pequegnat
County Clerk and ex-officio
Clerk of the Board of Supervisors

State of California } s.s.
County of Los Angeles }
On this 30th day of April, 1954, before me, the undersigned, a Notary Public in and for the County of Los Angeles, State of California, personally appeared Robert F. Starbuck, Marjorie S. Starbuck and Samuel Sheff, known to me to be the partners of the partnership that executed the within instrument and acknowledged to me that such partnership executed the same.
WITNESS my hand and official seal.

J. S. [Signature]
Notary Public in and for the County of Los Angeles

State of California } s.s.
County of Riverside }
I, W.G. Waite, City Clerk of the City of Riverside, California, hereby certify that an undertaking satisfactory to the Council of said City guaranteeing the construction of required street improvements in the subdivision was approved and filed in my office prior to the final acceptance of this map.
IN WITNESS WHEREOF, I have hereunto set my hand and affixed the official seal of the City of Riverside this 4th day of May, 1954.

W. G. Waite
City Clerk of the City of Riverside, California.

RESOLVED: That this map, consisting of one (1) sheet, be, and the same is hereby accepted as the official map of "La Hacienda Rancho Tract No. 2" and the streets and rights of way shown are hereby accepted as public streets and rights of way, and the City Clerk is hereby authorized and directed to affix said map by signing his name thereto as City Clerk of the City of Riverside, California and to affix the official seal of said City thereto.

I hereby certify that the foregoing resolution was adopted by the Mayor and Council of the City of Riverside this 4th day of May, 1954.

W. G. Waite
City Clerk of the City of Riverside, California.

I hereby certify, that according to the records of this office, the property shown on this map is not subject to any special assessments, bonds and/or liens which have not been paid in full. This does not include any special assessments, the bonds of which have not become a lien upon said property. Dated this 21st day of April, 1954.

J. D. Smith
City Treasurer

I hereby certify that according to the records of this office as of this date, there are no liens against the property shown on this map for unpaid State, County, Municipal or local taxes, or special assessments collected as taxes, except taxes and special assessments now a lien but not yet payable, which are estimated to be \$500.00.

Dated this 3rd day of May, 1954.
by M. Stode Deputy
V. M. HYDE, County Tax Collector

NOTE: Bearings are based on the center line of Indiana Avenue as being N 56°00'E, as shown on map of La Hacienda Rancho Tract, filed in Book 26 page 17, Records of Riverside County, California.
• 3/4" Iron pipe monument tagged L.S. 1825 set, unless otherwise noted.
• 2"x2" Redwood stakes, tagged L.S. 1825 set at all lot corners.

M.B. 27/43

M.B. 27/43

Book No. 1 - MB 27/43