

27/59  
M.B. 27/59

# HARMONY-DALE TRACT

LOCATED WITHIN THE CITY OF RIVERSIDE  
BEING A SUBDIVISION OF LOT 2 AND A PORTION OF LOT 7, BLOCK 32, RIVERSIDE LAND AND  
IRRIGATING COMPANY LANDS; M.B. I-70, RECORDS OF SAN BERNADINO COUNTY, CALIF.

JAN, 1954

J.F. DAVIDSON C.E.

SCALE 1=100

FILED  
JUL 13 1954  
JACK A. ROSS  
COUNTY RECORDER  
by Balthasar F. Gove  
#500 DEPUTY  
2:25 p.m.  
by Co. Clerk

We hereby certify that we are the owners of or interested in the land included within the subdivision shown on the annexed map consisting of two (2) sheets; that we are the only persons whose consent is necessary to pass a clear title to said land and we hereby consent to the making of said map and subdivision as shown within the colored border line and we hereby offer for dedication for public use lots A, B, and C for street purposes, and for construction and maintenance of all public utilities the five and ten foot easements shown by broken lines and designated as "5" R.U.E. and "10" P.U.E. and for public use lots D, E, and F for walkways. HARMONY DALE BUILDERS - A PARTNERSHIP.

By W. J. Stephens Partner  
By A. D. Woolley Partner

I hereby certify that the subdivider named on this map has deposited with the Water Department of the City of Riverside sufficient funds to cover the cost of installing all fire hydrants together with all water mains and laterals to the curb line on all streets shown on said map, and that all P.U.E. shown on this map are sufficient for all requirements of the Electric, Light and Water Department of the City of Riverside and for the Department of Public Utilities of said City.  
Dated this 20th day of June 1954.

A. J. Kennedy  
Superintendent of Light and Water Department; City of Riverside.

I hereby certify that according to the records of this office of this date the property shown on this map is not subject to any special assessments, bonds and or liens which have not been paid in full. This certificate does not include any special assessments the bonds of which have not become a lien upon said property.  
Dated this 6th day of April 1954.

Ted B. Smith by  
City Treasurer  
J. B. Bunch, Deputy

I hereby certify that I have examined the within map, that the subdivision shown hereon is substantially the same as it appeared on the tentative map and any approved alterations thereof, that all provisions of Chapter 128 (Subdivision Map Act), Statutes of California 1943, and of Ordinance No. 1328 of the City of Riverside, California, and all amendments thereto, have been complied with; that plans and specifications for drains, and drainage works sufficient to protect all lots in said subdivision from flood or overflow have been approved by me, that all easements to sewers and drains shown on said map are correct in fact and contents and are approved, and I am satisfied that this map is technically correct.  
Dated this 30th day of June 1954.

W. H. Irvine  
City Engineer.

I hereby certify that according to the records of this office the property shown on this map is not subject to any special assessments which have not been paid in full.  
Dated this 8th day of April 1954.

Orval Callington  
Street Superintendent.

RESOLVED: That this map consisting of two (2) sheets, be, and the same is hereby accepted as the official map of Harmony-Dale Tract and the streets and easements are accepted as public streets and easements and the City Clerk is hereby authorized and directed to deposit said map by signing his name thereto as City Clerk of the City of Riverside, California, and to affix the official seal of said City thereto.  
I hereby certify that the foregoing resolution was adopted by the Mayor and Council of the City of Riverside this 1st day of July 1954.

by W. E. Waite  
Deputy City Clerk of the City of Riverside, Calif.

STATE OF CALIFORNIA } ss.  
COUNTY OF RIVERSIDE }  
I, W. G. Waite, City Clerk of the City of Riverside California hereby certify that an undertaking satisfactory to the Council of said City guaranteeing the construction of required street improvements in this subdivision was approved and filed in my office prior to the final acceptance of this subdivision map.  
IN WITNESS WHEREOF, I have hereunto set my hand and affixed this official seal of the City of Riverside, California, this 6th day of July 1954.

by W. E. Waite  
Deputy City Clerk of the City of Riverside, Calif.

STATE OF CALIFORNIA } ss.  
COUNTY OF RIVERSIDE }  
On this 24th day of JUNE 1954, before me Louis N. Wright a Notary Public in and for said County and State, personally appeared W. E. STEPHENS AND T. B. WOOLLEY known to me to be the partners of the partnership that executed the within instrument, and acknowledged to me that such partnership executed the same.  
IN WITNESS WHEREOF, I have hereunto set my hand and affixed my official seal.  
Louis N. Wright  
Notary Public in and for said County & State  
My Commission Expires July 22, 1954

I hereby certify that a bond in the sum of 1000.00 has been executed and filed with the Board of Supervisors of the County of Riverside, California, conditioned upon the payment of all taxes, State County City or local and all special assessments collected as taxes which of the time of filing of this map with the County Recorder are a lien against said property, but not yet payable and said bond has been duly approved by said Board of Supervisors.  
Dated this 12th day of July 1954.

by McBazell GA. Peguegot County Clerk and Ex-officio  
Deputy Clerk of the Board of Supervisors

I hereby certify that according to the records of this office as of this date there are no liens against the property shown on this map for unpaid State, County, City or local taxes or special assessments collected as taxes except taxes and special assessments now a lien but not yet payable which are estimated at 1000.00.  
Dated this 4th day of June 1954.

W. H. Strode  
Deputy Riverside County Tax Collector V.M. HYDE.

I hereby certify that I am a Registered Civil Engineer of the State of California, and that this map consisting of two (2) sheets correctly represents a survey made under my supervision during Jan. 1954; that all monuments shown actually exist and their positions are correctly shown.  
J. F. Pardon  
Registered-Engineer No. 862.

I hereby certify that this map is as approved by the Riverside City Planning Commission at its meeting held on the 11th day of MARCH 1954.  
J. D. Adams Secretary  
Riverside City Planning Commission.

M.B. 27/59

NO 1 MB 27/59



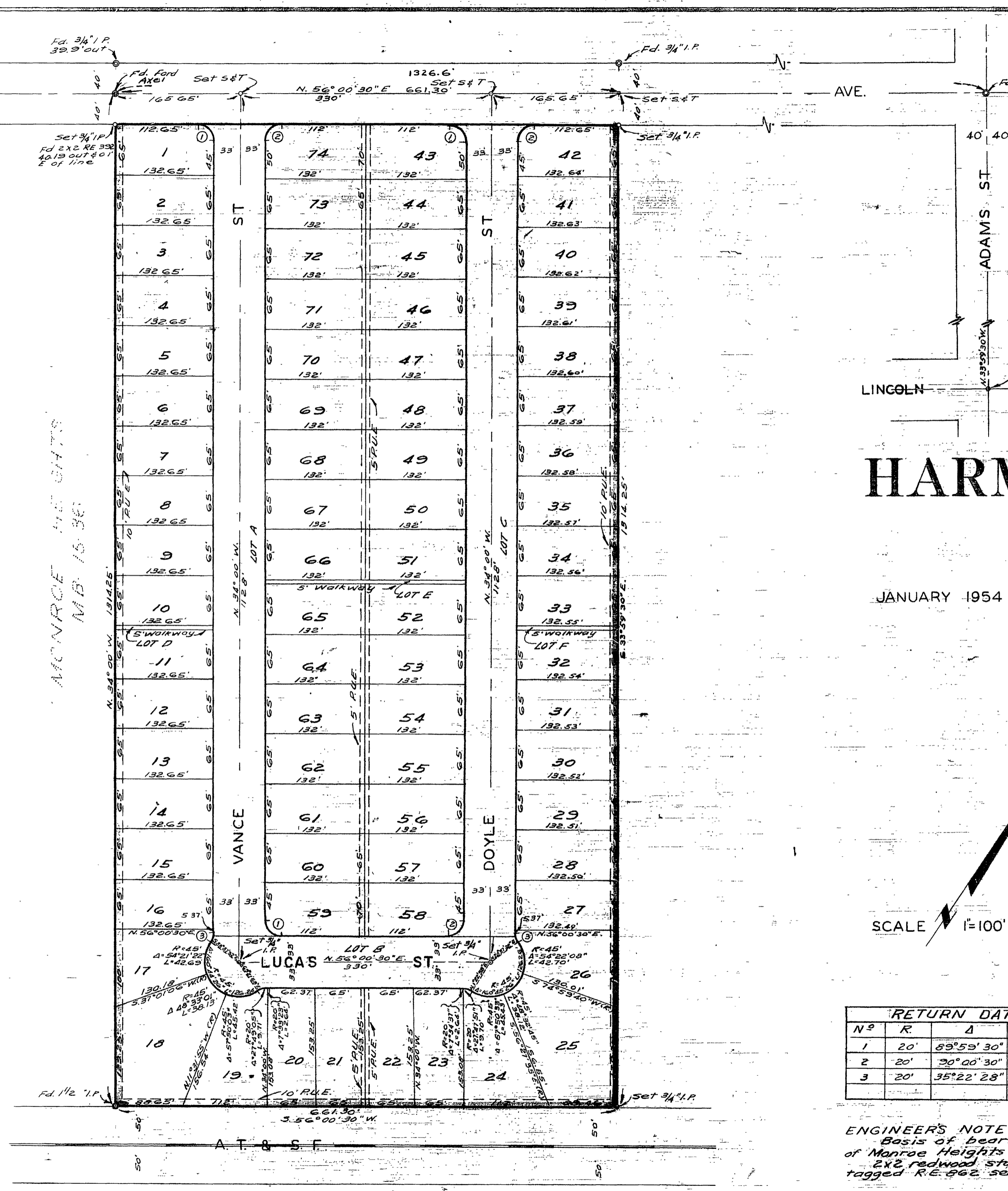
27/60

MONROE ST  
N. 33° 59' 30" W.

INDIANA AVE.

AVE.

ADAMS ST  
N. 33° 59' 30" W.

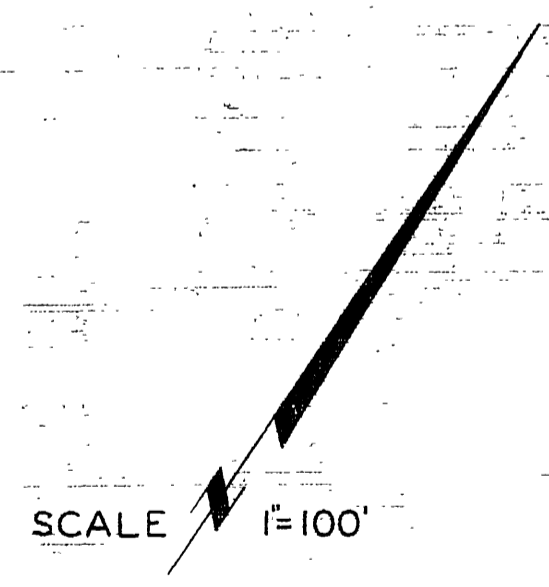


# HARMONY-DALE TRACT

JANUARY 1954

J.F. DAVIDSON, C.E.

SCALE 1"=100'



RETURN DATA				
N <sup>o</sup>	R	Δ	T	L
1	20'	83° 59' 30"	20.00'	31.41'
2	20'	30° 00' 30"	20.00'	31.42'
3	20'	35° 22' 28"	6.38'	16.35'

ENGINEER'S NOTE:  
 Basis of bearing is the Easterly line of Monroe Heights MB 15-36 as being N. 34° 00' W.  
 2x2 redwood stakes painted white and tagged R.E. 662 set at all lot corners.

M.B. 27/60

M.B. 27/60

MB 27/60

FB 474-35