

IN THE CITY OF RIVERSIDE DON - KAY TRACT NO. 2

Being a Subdivision of a portion of Lot 2, Block 72, Arlington Heights, as shown on map filed in Map Book 11, pages 20 & 21, Records of San Bernardino County, California.
April, 1954
Scale: 1" = 100'

Donald J. McKee - Licensed Surveyor

FILED

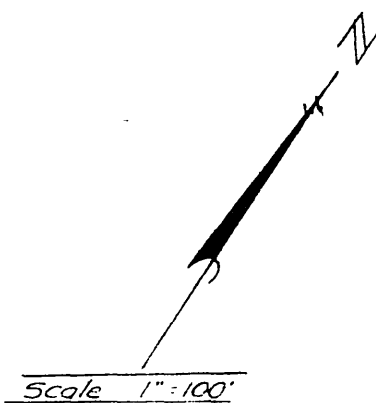
AUG 24 1954

JACK A. ROSS

COUNTY RECORDER

By Co. Clerk #582

11:30 a.m.

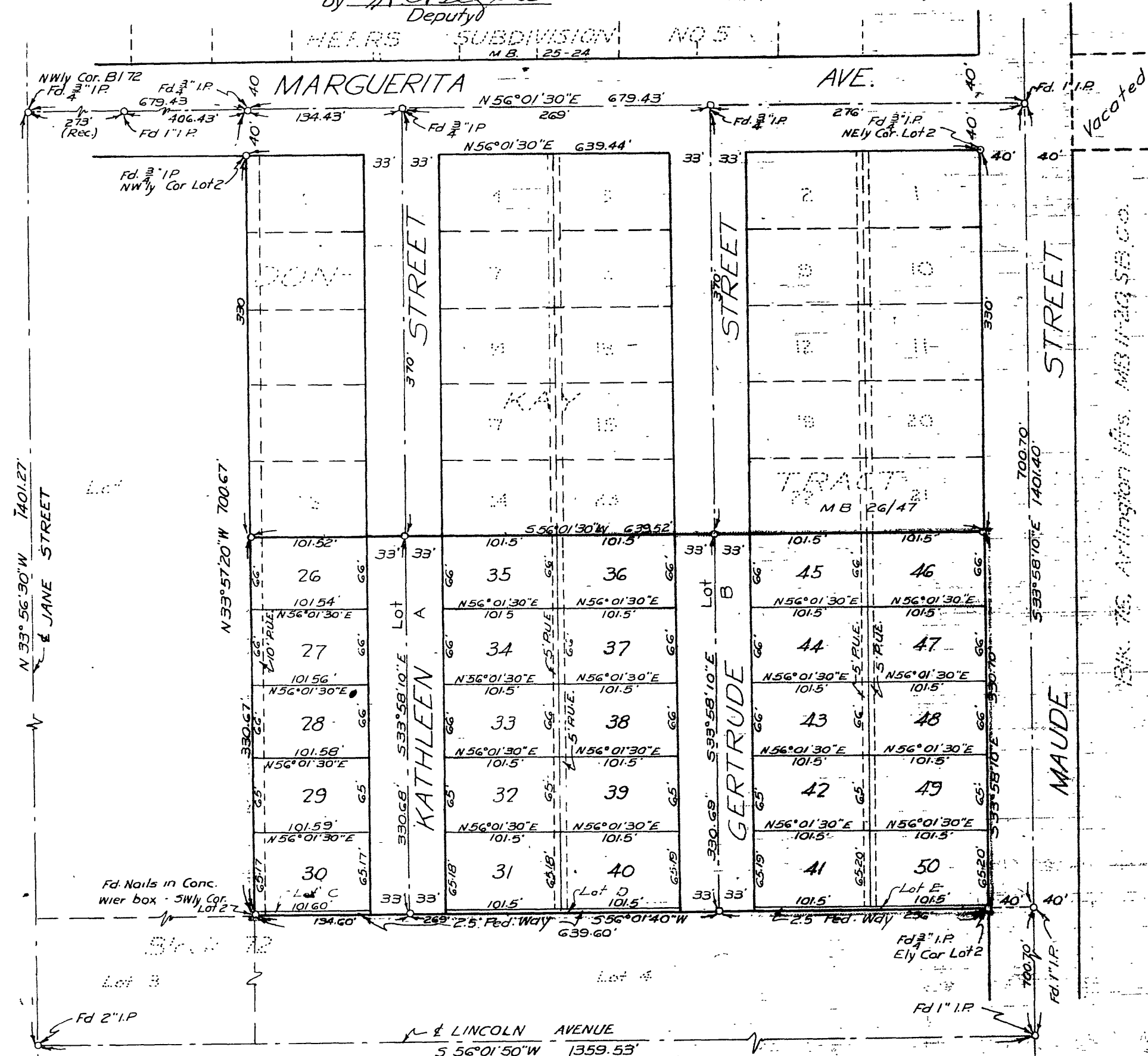


I hereby certify that a bond in the sum of \$1600.00 has been (executed and filed) deposited with the Board of Supervisors of the County of Riverside, State of California, conditioned upon the payment of all taxes, State, County, Municipal or local, and all special assessments collected as taxes, which at the time of filing of this map with the County Recorder, are a lien against said property, but not yet payable, and said bond has been duly approved by said Board of Supervisors.

Dated this 17 day of August, 1954.

G.A. Pequegnat
County Clerk and ex-officio
Clerk of the Board of Supervisors

by K.C. Beale
Deputy



We hereby certify that we are the owners of, or have some right, title or interest in the land included within the subdivision shown on the within map consisting of this one (1) sheet, that we are the only persons whose consent is necessary to pass a clear title to said land, and we hereby consent to the making of said map, and subdivision as shown within the colored border line, and we hereby offer for dedication to public use for street purposes, Lots A and B; and for public utilities, the five and ten foot easements shown by dotted lines and designated '5' P.U.E.' and '10' P.U.E.', and for public use for Pedestrian Way, Lots C, D and E.

ROOTH and CARR CONSTRUCTION CO., A Partnership.

Paul Rooth
Partner

Tom Carr
Partner

RESOLVED: That this map, consisting of this one (1) sheet, be and the same is hereby accepted as the official map of DON - KAY TRACT NO. 2 and the streets and rights of way shown are hereby accepted as Public Streets and rights of way, and the City Clerk is hereby authorized and directed to attest said map by signing his name thereto as City Clerk of the City of Riverside, California, and to affix the official seal of said City thereto.
I hereby certify that the foregoing resolution was adopted by the Mayor and Council of the City of Riverside this 10th day of Aug. 1954.

W. H. Waite
City Clerk of the City of Riverside, California

I hereby certify that according to the records of this office, the property shown on this map is not subject to any special assessments which have not been paid in full. Dated this 22 day of July 1954.

Orval Addington
Street Superintendent

I hereby certify that the subdivider named on this map has deposited with the Water Department of the City of Riverside, sufficient funds to cover the cost of installing all necessary fire hydrants, together with all water mains and laterals to the curb lines on all streets shown on said map; and that all public utility easements shown on this map are sufficient for all requirements of the Electric Light and Water Departments of the City of Riverside and for the Department of Public Utilities of said City.
Dated this 22nd day of June 1954.

A. J. Kennedy
Supt. of Light and Water Departments of the City of Riverside

I hereby certify that this map is as approved by the Riverside City Planning Commission at its meeting held on the 10th day of MAY 1954.

by J. V. Adams
Secretary, Riverside City Planning Commission

I hereby certify that I am a Licensed Land Surveyor in the State of California, and that this map, consisting of this one (1) sheet, correctly represents a survey made by me in April, 1954, and that all the monuments shown hereon actually exist and their positions are correctly shown.

Donald J. McKee
Licensed Land Surveyor No. 1825

State of California } ss.
County of Riverside }
On this 20th day of July 1954, before me L. E. Guillory
a Notary Public in and for the County of Riverside, State of California, personally appeared E. PAUL Rooth and Tom Carr, known to me to be the Partners of the Partnership that executed the within instrument, and acknowledged to me that such Partnership executed the same

WITNESS: my hand and official seal.

L. E. Guillory
Notary Public in and for the County of Riverside, Calif.

State of California } ss.
County of Riverside }
I, W. G. Waite, City Clerk of the City of Riverside, California, hereby certify that an undertaking satisfactory to the Council of said City guaranteeing the construction of required street improvements in the subdivision, was approved and filed in my office prior to the final acceptance of this map.

IN WITNESS WHEREOF, I have hereunto set my hand and affixed the official seal of the City of Riverside this 10th day of Aug. 1954.

W. H. Waite
City Clerk of the City of Riverside, California

I hereby certify that I have examined the within map; that the subdivision shown hereon is substantially the same as it appeared on the tentative map and any approved alterations thereof; that all provisions of Chapter 128 (Subdivision Map Act), Statutes of California, 1943, and of Ordinance No. 1328 of the City of Riverside, California, and all amendments thereto, have been complied with; that all plans and specifications for drains, drainage, sewer and drainage works sufficient to protect all lots in said subdivision from flood or overflow has been approved by me; that all easements for sewers and drains shown on said map are correct in form and contents and are approved; and I am satisfied that this map is technically correct. Dated this 22 day of July 1954.

M. H. Swine
City Engineer

I hereby certify that according to the records of this office, the property shown on this map is not subject to any special assessments, bonds and/or liens which have not been paid in full. This does not include any special assessments, the bonds of which have not become a lien upon said property.
Dated this 12th day of MAY 1954.

J. D. Smith
City Treasurer

I hereby certify that according to the records of this office as of this date, there are no liens against the property shown on this map for unpaid State, County, Municipal or local taxes, or special assessments collected as taxes, except taxes and special assessments now a lien but not yet payable, which are estimated to be \$600.00.
Dated this 21st day of May 1954.

by W. M. Hyde
Deputy
V.M. HYDE, County Tax Collector

NOTE: Bearings are based on the center line of Marguerita Ave. as being N 56° 01' 30" E as shown on map of Heers Subdivision No. 5, filed in Map Book 25, page 24, Records of Riverside County, California.
o. Iron pipe monument found or set as noted.
x. 2"x2" Redwood stakes, tagged "L.S. 1825" set at all lot corners, unless otherwise noted.

M.B. 27/71

M.B. 27/71

M.B. 27/71