

IN THE CITY OF RIVERSIDE CALIFORNIA DOWNES TRACT

Being a Subdivision of a portion of Lot 16, Block 7, R.L. and I Co. Lands, as shown by
Map on file in Map Book 1, page 70, Records of San Bernardino County, Calif.
January, 1954
Donald J. McKee, Licensed Surveyor.

I hereby certify that a bond in the sum of \$500.00 has been executed and filed deposited with the Board of Supervisors of the County of Riverside, State of California, conditioned upon the payment of all taxes, State, County, Municipal or local, and all special assessments collected as taxes, which at the time of filing of this map with the County Recorder, are a lien against said property, but not yet payable, and said bond has been duly approved by said Board of Supervisors.
Dated this 23rd day of August, 1954.

G.A. Pequegnat,
County Clerk and ex-officio
Clerk of the Board of Supervisors

by W.C. Bogard
Deputy

Resolved: That this map consisting of this one sheet, be, and the same is hereby accepted as the official map of "CALIFORNIA DOWNES TRACT", and the streets and rights of way shown are hereby accepted as Public Streets and rights of way and the City Clerk is hereby authorized and directed to attest said map by signing his name thereto as City Clerk of the City of Riverside, California, and to affix the official seal of said City thereto.

I hereby certify that the foregoing resolution was adopted by the Mayor and Council of the City of Riverside this 17th day of August, 1954.
W.C. Bogard
City Clerk of the City of Riverside, Calif.

I hereby certify that I have examined the within map, that the subdivision shown hereon is substantially the same as it appeared on the tentative map and any approved alterations thereof; that all provisions of Chapter 128 (Subdivision Map Act) Statutes of California, 1943, and of Ordinance No. 1328 of the City of Riverside, California, and all amendments thereto, have been complied with; that all plans and specifications for drains, drainage, sewer and drainage works sufficient to protect all lots in subdivision from flood have been approved by me; and I am satisfied that this map is technically correct.

Dated this 16 day of Aug. 1954.

M. N. Johnson
City Engineer

I hereby certify that according to the records of this office, the property shown on this map is not subject to any special assessments, bonds and/or liens which have not been paid in full. This does not include any special assessments, the bonds of which have not become a lien upon said property.
Dated this 27th day of July 1954.

Fred A. Smith
City Treasurer

I hereby certify that I am a Licensed Land Surveyor in the State of California, and that this map, consisting of this one (1) sheet, correctly represents a survey made under my supervision in January, 1953, and that all the monuments shown hereon actually exist and their positions are correctly shown.

Donald J. McKee
Licensed Land Surveyor No. 1825

I hereby certify that according to the records of this office as of this date, there are no liens against the property shown on this map for unpaid State, County, Municipal or local taxes, or special assessments collected as taxes, except taxes and special assessments now a lien but not yet payable, which are estimated to be \$500.00.
Dated this 11th day of June 1954.

W.C. Stode
Deputy
V.M. HYDE, County Tax Collector

We hereby certify that we are the owners of, or have some right, title or interest in the land included within the subdivision shown on the within map consisting of one (1) sheet, that we are the only persons whose consent is necessary to pass a clear title to said land, and we hereby consent to the making of said map and subdivision as shown within the colored border line, and we hereby offer for dedication to public use for street purposes, Lot A, and for Public Utilities, the five and ten foot easements, shown by dotted lines and designated "5'-PUE" and "10'-PUE".

HOMES OF TOMORROW, INCORPORATED
Frank Morris President
Horner T. Howell Secretary

State of California } S.S.
County of Los Angeles }
On this 27th day of July 1954, before me Donald Johnson
a Notary Public in and for the County of Los Angeles, State of California, personally appeared K. Sande Senness and Horner T. Howell
known to me to be the President and Secretary, respectively, of the Corporation that executed the within instrument, known to me to be the persons who executed the same on behalf of the Corporation therein named, and acknowledged to me that such Corporation executed the same.
WITNESS my hand and official seal.

Donald Johnson
Notary Public in and for the County of Los Angeles

State of California } S.S.
County of Riverside }
I, W.G. Waite, City Clerk of the City of Riverside, California, hereby certify that an undertaking satisfactory to the Council of said City, guaranteeing the construction of required street improvements in the subdivision, was approved and filed in my office prior to the final acceptance of this subdivision map.

In witness whereof I have hereunto set my hand and affixed the official seal of the City of Riverside, Calif. on this 17th day of August 1954.
W.G. Waite
City Clerk of the City of Riverside, California.

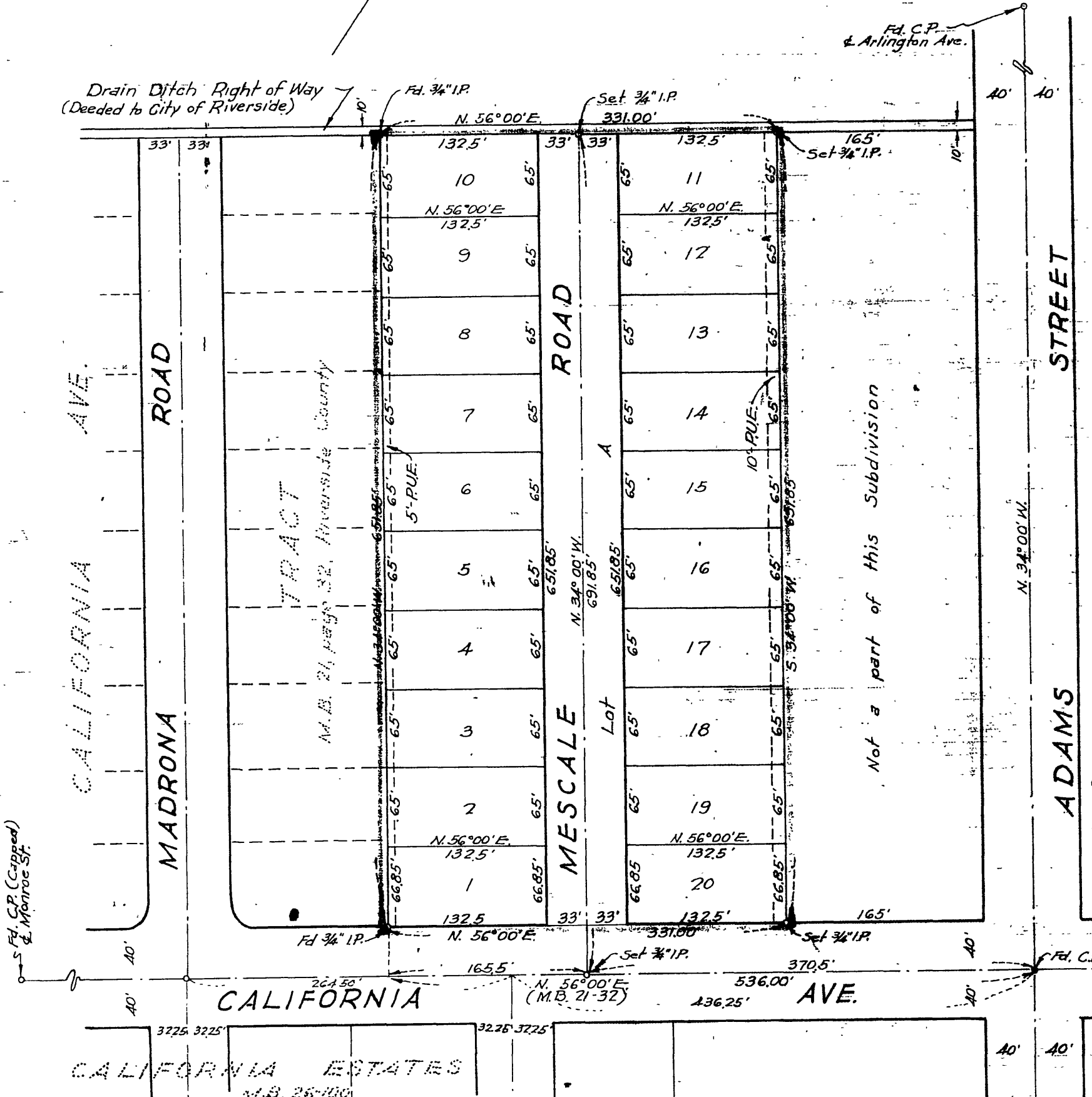
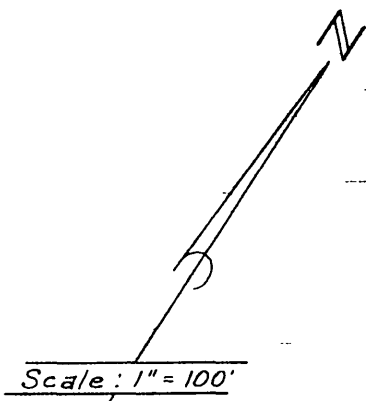
I hereby certify that according to the records of this office, the property shown on this map is not subject to any special assessments which have not been paid in full. Dated this 27th day of July 1954.
Orval Coddington
Street Superintendent.

I hereby certify that the subdivider named on this map has deposited with the Water Department of the City of Riverside, sufficient funds to cover the cost of installing all necessary fire hydrants, together with all water mains and laterals to the curb lines on all streets shown on said map; and that all public utility easements shown on this map are sufficient for all requirements of the Electric Light and Water Departments and the Department of Public Utilities of the City of Riverside.
Dated this 16 day of August 1954.
Jack R. Shepard
(Acting) Sup. of Light and Water Departments of the City of Riverside, Calif.

I hereby certify that this map is as approved by the Riverside City Planning Commission at its meeting held on the 5th day of August 1954.
J.W. Adams
Riverside City Planning Commission.

FILED

August 24, 1954
No. at 2:20 P.M.
JACK A. ROSS
COUNTY RECORDER
by O.A. Neal DEPUTY
Fee \$5.00
Filed by County Clerk
SUBD'N GTEE. STICO



Note: Bearings are based on the center line of California Avenue as being N. 56°00'E. as shown on map of "CALIFORNIA AVENUE TRACT", filed in Map Book 21, page 32, Records of Riverside County, California.
° Iron Pipe monument found or set as noted.
2"x2" Redwood stakes set all lot corners.

M.B. 27/72

M.B. 27/72

MB 27/72