

27/84
M.B. 27/84

FILED
Oct 13, 1954
No. 500 at 4:30 P.M.
JACK A. ROSS
COUNTY RECORDER
by Deputy
File # 500
Filed by County Clerk
SUB'DN GTEE- RTCo.

LOCATED IN THE CITY OF RIVERSIDE

SUN GOLD TERRACE UNIT NO. 10

BEING A SUBDIVISION OF A PORTION OF THE SOUTH 1/2 OF SECTION 35, T.2S. R5W.
S.B.B. & M. AND A PORTION OF LOT G, VICTORIA HEIGHTS, M.B. 4-92 REC. OF RIV. CO.

NOVEMBER 1953

J.F. DAVIDSON, C.E.

SCALE 1"=100'

We hereby certify that we are the holders of, or interested in, the legal title to the land included within the subdivision as shown on the annexed map consisting of two sheets, by reason of being Trustee in those certain Deeds of Trust recorded July 17, 1953 in Book 1492 pages 188, 193, 203, 224 of Official Records in the office of the Recorder of Riverside County, Calif., and we hereby consent to the making of said map and subdivision as shown within the colored border line

CALIFORNIA TRUST COMPANY,
a corporation, Trustee,
by Samuel S. Roach
Vice President
by Harold
Assistant Secretary

STATE OF CALIFORNIA } S.S.
COUNTY OF LOS ANGELES }
On this 8th day of October, 1954, before me, a Notary Public in and for said County and State, personally appeared Samuel S. Roach and H. W. Roach known to me to be the Vice President and Assistant Secretary respectively of the California Trust Company, the corporation that executed the within instrument, and known to me to be the persons who executed the same on behalf of the corporation therein named, and acknowledged to me that such Corporation executed the same, Witness my hand and seal

Agnes P. Brooks
Notary Public in and for said County and State
My Commission expires 3-27-57.

We hereby certify that we are the owners of or have some right title or interest in the land included within the subdivision shown on the annexed map consisting of two (2) sheets; that we are the only party whose consent is necessary to pass a clear title to said land; that we hereby consent to the making of said map and subdivision as shown within the colored border line and we hereby offer for dedication for public use Lots A, B, C, D, E, F, G, H, I, for street purposes; and for the construction and maintenance of all public utilities the five, ten & twenty-five foot easements shown by broken lines and designated as 5' P.U.E. and 10' P.U.E. and 5' x 25' P.U.E."

JOHNSON INC. by Walter Vice-President
a corporation. by Simpson Asst Secretary

STATE OF CALIFORNIA } S.S.
COUNTY OF RIVERSIDE }
On this 4th day of October, 1954, before me the undersigned a Notary Public in and for said County and State personally appeared R. H. Waite known to me to be the Vice-President and J. L. Simpson known to me to be the Ass't Secretary of the corporation that executed the within instrument and they acknowledged to me that they executed the same.
IN WITNESS WHEREOF, I have hereunto set my hand and affixed my official seal the day and year first above written.

Thomas M. Kinnel
Notary Public in and for the County of Riverside, State of California.

I hereby certify that according to the records of this office the property shown on this map is not subject to any special assessments which have not been paid in full
Dated this 4th day of October, 1954

Orval Colbington
Street Superintendent.

I hereby certify that this map is as approved by the Riverside City Planning Commission at its meeting held on the 15th day of April, 1954.

J. J. Davis Secretary
Riverside City Planning Commission.

I hereby certify that the subdivider named on this map has deposited with the Water Department of the City of Riverside, sufficient funds to cover the cost of installing all necessary fire hydrants together with all water mains and laterals to the curb line on all streets shown on said map; and that all P.U.E. shown on this map are sufficient for all requirements of the Electric Light and Water Departments of the City of Riverside and for the Department of Public Utilities of said City.
Dated this 4th day of October, 1954.

A. J. Kennedy
Superintendent of Light and Water Department, City of Riverside.

I hereby certify that according to the records of this office as of this date the property shown on this map is not subject to any special assessments, bonds and/or liens which have not been paid in full. This certificate does not include any special assessments the bonds of which have not become a lien upon said property
Dated this 7th day of September, 1954.

J. Smith
City Treasurer.

I hereby certify that a bond in the sum of \$4000.00 has been executed and filed with the Board of Supervisors of the County of Riverside, California, conditioned upon the payment of all taxes, State, County, City or local and all special assessments collected as taxes which at the time of filing of this map with the County Recorder are a lien against said property, but not yet payable and said bond has been duly approved by said Board of Supervisors.
Dated this 11th day of October, 1954.

by McBeagle Deputy
G. A. Pequegnat, County Clerk and ex-officio of the Board of Supervisors.

I hereby certify that according to the records of this office as of this date there are no liens against the property shown on this map for unpaid State, County, City or local taxes or special assessments collected as taxes except taxes and special assessments now a lien but not yet payable which are estimated at \$4000.00
Dated this 14th day of October, 1954.

by James D. King Deputy
V. M. HYDE
County Tax Collector

RESOLVED: That this map consisting of two (2) sheets be and the same is hereby accepted as the official map of Sun Gold Terrace Unit No. 10 and the streets walkways and easements are accepted as Public streets walkways and easements and the City Clerk is hereby authorized and directed to attest said map by signing his name thereto as City Clerk of the City of Riverside, California and to affix the official seal of said city thereto.

I hereby certify that the foregoing resolution was adopted by the Mayor and Council of the City of Riverside.
Dated this 6th day of October, 1954.

by W. Waite Deputy
City Clerk of the City of Riverside, Calif.

STATE OF CALIFORNIA } S.S.
COUNTY OF RIVERSIDE }
I, W.G. Waite, City Clerk of the City of Riverside, California hereby certify that an undertaking satisfactory to the Council of said City guaranteeing the construction of required street improvements in this subdivision was approved and filed in my office prior to the final acceptance of this subdivision map.

IN WITNESS WHEREOF I have hereunto set my hand and affixed this official seal of the City of Riverside, California.
Dated this 6th day of October, 1954.

by W. Waite Deputy
City Clerk of the City of Riverside, California.

I hereby certify that I have examined the within map; that the subdivision shown hereon is substantially the same as it appeared on the tentative map and any alterations thereof; that all provisions of Chapter 128 (Subdivision Map Act), Statutes of California, 1943, and of Ordinance No. 1328 of the City of Riverside, California, and all amendments thereto, have been complied with; that plans and specifications for drains, drainage, sewer and drainage works sufficient to protect all lots in said subdivision from flood or overflow have been approved by me; that all easements for sewers and drains shown on said map are correct in form and contents and are approved; and I am satisfied that this map is technically correct. Dated this 2nd day of Oct., 1954.

M. N. Swin
City Engineer

I hereby certify that I am a Registered Civil Engineer of the State of California and that this map consisting of two (2) sheets correctly represents a survey made under my supervision during November, 1953, that all monuments shown actually exist and their positions are correctly shown.

J. J. Davis
Registered Civil Engineer No. 862.

M.B. 27/84

NO 1 MB 27/84

27/85

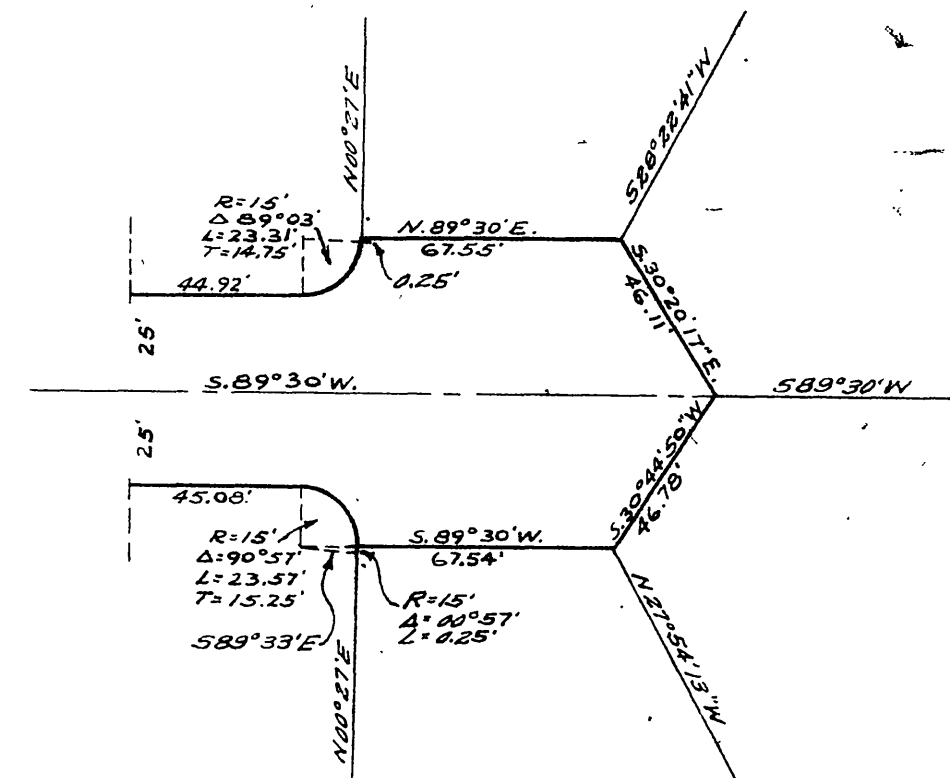
M.B. 27/85

SUN GOLD TERRACE UNIT NO. 10

DECEMBER 1953

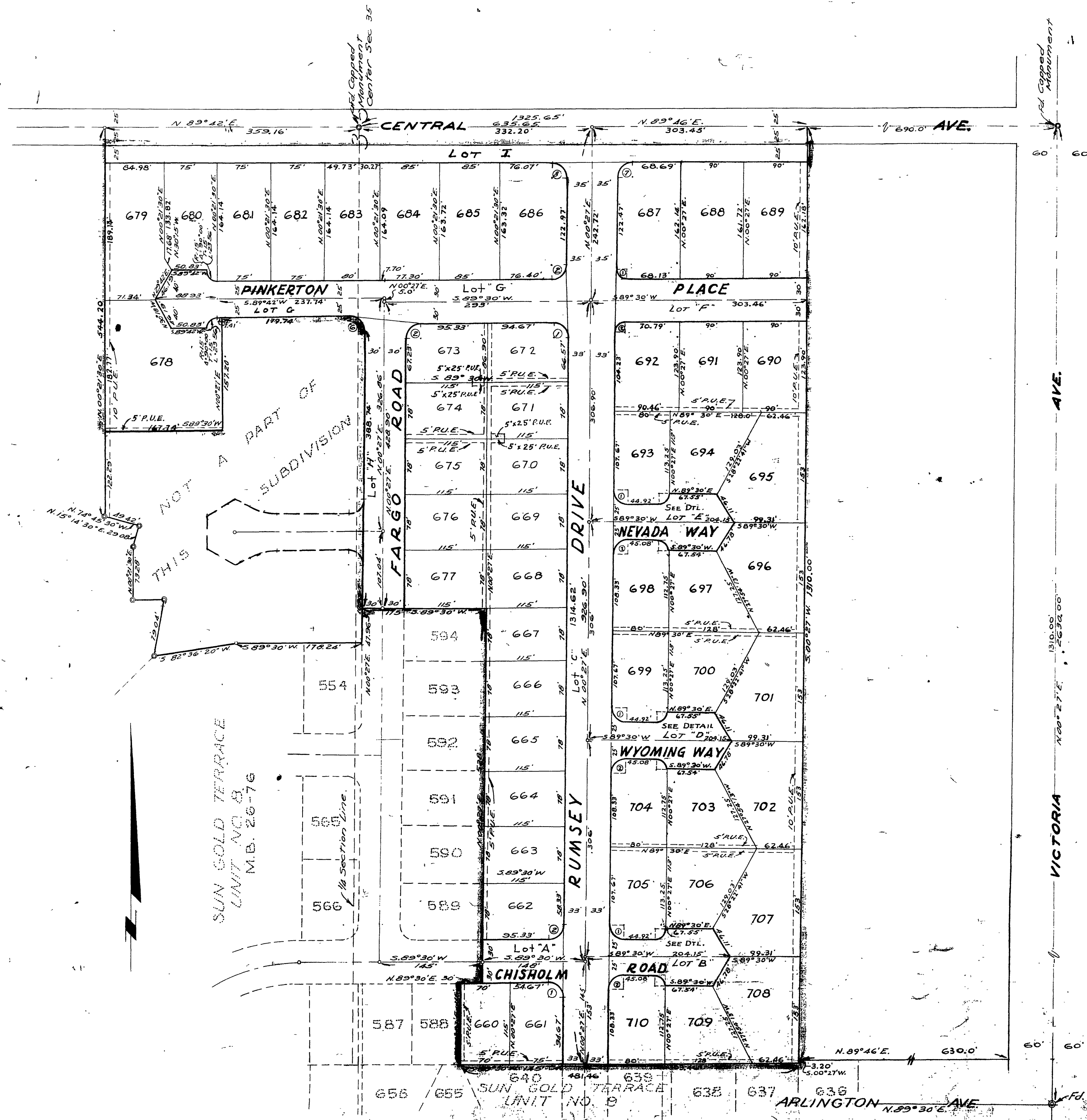
J.F. DAVIDSON, C.E.

SCALE 1"=100'



DETAIL
SCALE 1"=50'

Return Data				
Nº	R	Δ	T	L
1	20'	90°57'	20.33'	31.75'
2	20'	89°03'	19.67'	31.08'
3	20'	90°45'	20.26'	31.68'
4	20'	89°19'	19.76'	31.18'
5	20'	90°41'	20.24'	31.65'
6	20'	90°45'	20.26'	31.68'
7	20'	89°19'	19.76'	31.18'
8	20'	90°41'	20.24'	31.65'



M.B. 27/85

NO 1

M.B. 27/85