

IN THE CITY OF RIVERSIDE

WOODLAWN PARK TRACT NO. 2

BEING A RESUBDIVISION OF SANDERSONS SUBDIVISION AS SHOWN IN
MAP BOOK 5, PAGE 70, RECORDS OF SAN BERNARDINO CO. CALIF.

JUNE 1954

SCALE 1" = 100'

J. F. DAVIDSON, C. E.

FILED

May 24, 1955
No. _____ at 2:10 P. M.
JACK A. ROSS
COUNTY RECORDER
by O. A. Treadwell
DEPUTY
Fee \$5.00
Filed by County Clerk
SUB'D N. GTEE. STICO.

29
8
MB 29/8

We hereby certify that we are the owners of, or have some right, title or interest in the land included within the subdivision shown on the annexed map consisting of one (1) sheet; that we are the only persons whose consent is necessary to pass a clear title to said land; that we hereby consent to the making of said map and subdivision as shown within the colored border line, and we hereby offer for dedication for public use, Lots A, B, C, D for street purposes, and for the construction and maintenance of all public utilities the five foot easements shown by broken lines, and designated as "5' P.U.E.", also the five foot easements for sewer and public utilities.

William S. Millberg
President
Arman Lubell
Secretary

I hereby certify that I am a Registered Civil Engineer of the State of California and that this map consisting of one (1) sheet correctly represents a survey made under my supervision during June 1954; that all monuments shown actually exist and their positions are correctly shown.

J. F. Davidson
Registered Civil Engineer No. 862

I hereby certify that this map is as approved by the Riverside City Planning Commission at its meeting held on the 5th day of AUGUST 1954.

T. V. Grant
Secretary
Riverside City Planning Commission

I hereby certify that the subdivider named on this map has deposited with the Water Department of the City of Riverside, sufficient funds to cover the cost of installing all necessary fire hydrants, together with all water mains and laterals to the curb line on all streets shown on said map; and that all P.U.E. shown on this map are sufficient for all requirements of the Electric Light and Water Departments of the City of Riverside and for the Department of Public Utilities of said City.

A. Kennedy
Superintendent of Light and Water Department, City of Riverside

I hereby certify that according to the records of this office as of this date the property shown on this map is not subject to any special assessments, bonds and or liens which have not been paid in full.

Fred D. Smith
City Treasurer

I hereby certify that a bond in the sum of \$1000.00 has been executed and filed with the Board of Supervisors of the County of Riverside, California, conditioned upon the payment of all taxes, State, County, City or local and all special assessments collected as taxes, which at the time of filing of this map with the County Recorder are a lien against said property, but not yet payable and said bond has been duly approved by said Board of Supervisors.

G. M. Pequegnat
County Clerk and Ex-Officio Clerk of the Board of Supervisors

I hereby certify that according to the records of this office as of this date, there are no liens against the property shown on this map for unpaid State, County, City or local taxes or special assessments collected as taxes except taxes and special assessments now a lien but not yet payable which are estimated at \$600.00.

W. M. Hyde
County Tax Collector

RESOLVED: That this map consisting of one (1) sheet be, and the same is hereby accepted as the official map of "Woodlawn Park Tract No. 2" and the streets and easements are accepted as public streets and easements and the City Clerk is hereby authorized and directed to attest said map by signing his name thereto as City Clerk of the City of Riverside, California, and to affix the official seal of said City thereto.

W. M. Waite
City Clerk of the City of Riverside, California

STATE OF CALIFORNIA } s.s.
COUNTY OF RIVERSIDE }
I, W. G. Waite, City Clerk of the City of Riverside, California, hereby certify that an undertaking satisfactory to the Council of said City guaranteeing the construction of required street improvements in this subdivision was approved and filed in my office prior to the final acceptance of this final subdivision map.

W. G. Waite
City Clerk of the City of Riverside, California

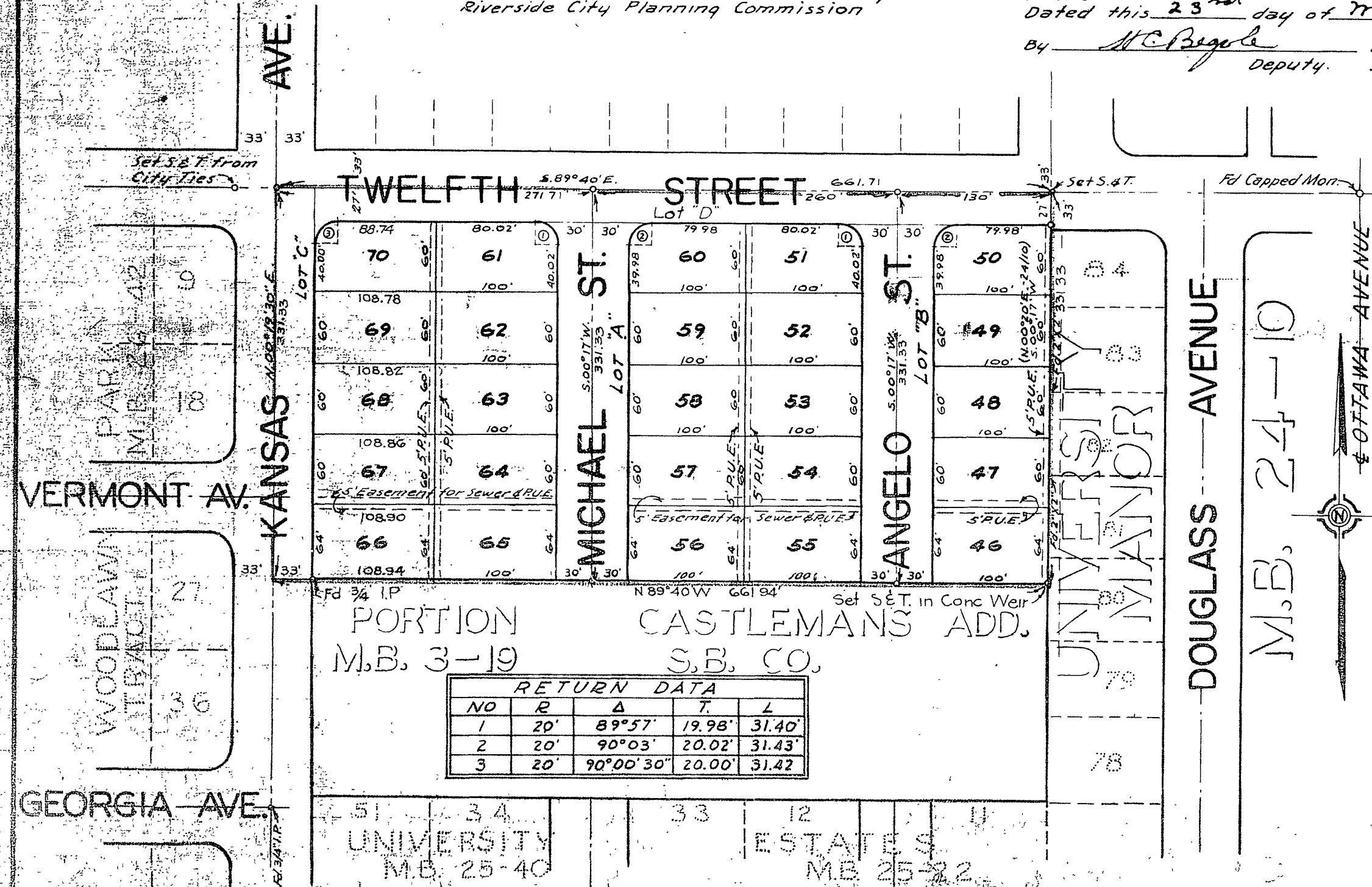
I hereby certify that I have examined the within map, that the subdivision shown hereon is substantially the same as it appeared on the tentative map, and any approved alterations thereof; that all provisions of Chapter 12B (Subdivision Map Act), Statutes of California, 1943, and of Ordinance No. 132B of the City of Riverside, California, and all amendments thereto, have been complied with; that plans and specifications for drains, drainage, sewer and drainage works sufficient to protect all lots in said subdivision from flood or overflow have been approved by me; that all easements for sewers shown on said map are correct in form and contents and are approved; and I am satisfied that this map is technically correct.

M. N. Irvine
City Engineer

I hereby certify that according to the records of this office the property shown on this map is not subject to any special assessments which have not been paid in full.

C. W. Coddington
Street Superintendent

ENGINEERS NOTE
Bearings are based on the center line of Twelfth St. as being S. 89° 40' E. as shown on map of "University Manor" in M.B. 24110.
Set 3/4" Iron pipe at all points shown thus, o
Set 2"x2" Redwood stakes painted white and tagged R.E. 862 at all lot corners



NO	R	Δ	T	L
1	20'	89°57'	19.98'	31.40'
2	20'	90°03'	20.02'	31.43'
3	20'	90°00'30"	20.00'	31.42'

MB 29/8

1101 MB 29/8