

IN THE CITY OF RIVERSIDE BUCK HOMES ESTATES

UNIT NO 3

BEING A SUBDIVISION OF A PORTION OF LOT 7 OF BLOCK 14 OF THE R L & I CO
LANDS, AS SHOWN IN MAP BOOK I, PAGE 70, RECORDS OF SAN BERNARDINO CO,
CALIFORNIA

SEPTEMBER, 1955

SCALE 1" = 100'

J F DAVIDSON, C.E

FILED
Nov 21 1955
No. _____ at 11:20 AM
by JACK A ROSS COUNTY RECORDER
DAVID HEAT DEPUTY
Fee \$ 5.00
FILED BY COUNTY CLERK
SUBDN GTEE STICO

RETURN DATA				
NO	R	Δ	T	L
1	20	114°30'40"	31.10	39.94
2	20	89°57'06"	19.98	31.40

OWNERS CERTIFICATE

We hereby certify that we are the owners of or have some right title or interest in the land included within the subdivision shown on the annexed map consisting of one (1) sheet, that we are the only persons whose consent is necessary to pass a clear title to said land, that we hereby consent to the making of said map and subdivision as shown with the colored border line and we hereby offer for dedication for public use, lots A to C inclusive for street purposes and for the construction and maintenance of all public utilities, the 5 and 10 easements shown by broken lines and designated as 5 PUE and 10 PUE RIVERGAR HOMES CORP, a corporation

By Carl M Buck President By Carl M Buck Secretary

SECURITY TITLE INSURANCE CO a corporation, Trustee

By Joseph S Long Vice President By Ronald W Myers Asst Secretary

CORPORATE ACKNOWLEDGEMENT

STATE OF CALIFORNIA } ss
COUNTY OF LOS ANGELES }
On this 4th day of OCTOBER, 1955, before me, JOHN W JENNISON a Notary Public in and for said County and State, personally appeared SARL M BUCK known to me to be the President and SARL M BUCK known to me to be the Secretary of the corporation that executed the within instrument, and know to me to be the persons who executed the within instrument on behalf of the Corporation therein named, and acknowledged to me that such corporation executed the within instrument pursuant to its by-laws or a resolution of its board of directors.

Witness my hand and official seal
John W Jennison
Notary Public in and for said County & State
My Commission Expires Nov 25, 1958

STREET SUPERINTENDENTS CERTIFICATE

I hereby certify that according to the records of this office, the property shown on this map is not subject to any special assessments which have not been paid in full
Dated this 20 day of Sept, 1955
Orval Ackert
Street Superintendent

SUPERINTENDENT OF LIGHT & WATER DEPT

I hereby certify that the subdivider named on this map has deposited with the Water Department of the City of Riverside sufficient funds to cover the cost of installing all necessary fire hydrants together with all water mains and laterals to the curb line on all streets shown on said map, that all PUE shown on said map are sufficient for all requirements of the Electric Light and Water Department of the City of Riverside and for the Department of Public Utilities of said City
Dated this 24th day of October, 1955

A Kennedy
Superintendent of Light and Water Department
City of Riverside, California

TAX BOND

I hereby certify that a bond in the sum of _____ has been executed and filed with the Board of Supervisors of the County of Riverside, California conditioned upon the payment of all taxes, State, County, City, or local and all special assessments collected as taxes which at the time of filing of this map with the County Recorder are a lien against said property but not yet payable and said bond has been duly approved by said Board of Supervisors
Dated this _____ day of _____, 1955
G A PEQUEGNAT County Clerk and ex officio
Clerk of the Board of Supervisors

By _____ Deputy

CORPORATE ACKNOWLEDGEMENT

STATE OF CALIFORNIA } ss
COUNTY OF RIVERSIDE }
On this 30th day of SEPT, 1955, before me, ZELIA W JOHNSON a Notary Public in and for said County and State, personally appeared JOSEPH S LONG known to me to be the Vice President and RONALD MYERS known to me to be the Asst Secretary of the SECURITY TITLE INSURANCE CO, the corporation that executed the within instrument, and know to me to be the persons who executed the within instrument on behalf of the corporation therein named, and acknowledged to me that such corporation executed the within instrument pursuant to its by laws or a resolution of its board of directors.

Witness my hand and official seal
Zelia W Johnson
Notary Public in and for said County and State
My Commission Expires July 23, 1958

CITY ENGINEERS CERTIFICATE

I hereby certify that I have examined the within map, that the subdivision shown hereon is substantially the same as it appeared on the tentative map and day approved by the City of Riverside, California, Ordinance No 128 (Subdivision Map Act) Statutes of California 1943 and of Ordinance No 132B of the City of Riverside, California and all amendments thereto, that all plans and specifications for drains, drainage, sewer and drainage works sufficient to protect all lots in said subdivision from flood or overflow have been approved by me, that all easements for sewers and drains shown on said map are correct in form and contents and are approved, and I am satisfied that this map is technically correct
Dated this 31 day of October, 1955

James J. Martini
City Engineer

CIVIL ENGINEERS CERTIFICATE

I hereby certify that I am a Registered Civil Engineer of the State of California and that this map consisting of one (1) sheet correctly represents a survey made under my supervision during June of 1955, that all monuments shown hereon actually exist and their positions are correctly shown
Dated this 21 day of September, 1955

J F Davidson
Registered Civil Engineer No 862

COUNTY TAX COLLECTORS CERTIFICATE

I hereby certify that according to the records of this office as of this date, there are no liens against the property shown on the within map for unpaid State, County, or local taxes or special assessments collected as taxes, except taxes or special assessments now a lien but not yet payable which are a lien against the property shown on the within map
Dated this 21 day of September, 1955

V M NYDE - County Tax Collector
Deputy

RESOLVED

That this map consisting of one (1) sheet be, and the same is hereby accepted as the official map of Buck Homes Estates Unit No 3 and the streets and easements are accepted as public streets and easements and the City Clerk is hereby authorized and directed to attest said map by signing his name thereto as City Clerk of the City of Riverside and to affix the official seal of said City thereon
I hereby certify that the foregoing resolution was adopted by the Mayor and Council of the City of Riverside
This 12 day of July, 1955
Orval Ackert
City Clerk of the City of Riverside, California

CITY CLERK ATTEST

STATE OF CALIFORNIA } ss
COUNTY OF RIVERSIDE }
I, W B Waite, City Clerk of the City of Riverside, California hereby certify that an undertaking satisfactory to the Council of said City guaranteeing the construction of required street improvements in this subdivision was approved and filed in my office prior to the final acceptance of this subdivision map
IN WITNESS WHEREOF I have hereunto set my hand and affixed this official seal of the City of Riverside, California this 12th day of July, 1955
W B Waite
City Clerk of the City of Riverside, California

CITY TREASURERS CERTIFICATE

I hereby certify that according to the records of this office as of this date, the property shown on this map is not subject to any special assessments bonds and/or liens which have not been paid in full
This certificate does not include any special assessments the bonds of which have not become a lien upon said property
Dated this 23rd day of September, 1955

Julius J Smith by T B Smith
City Treasurer Ant

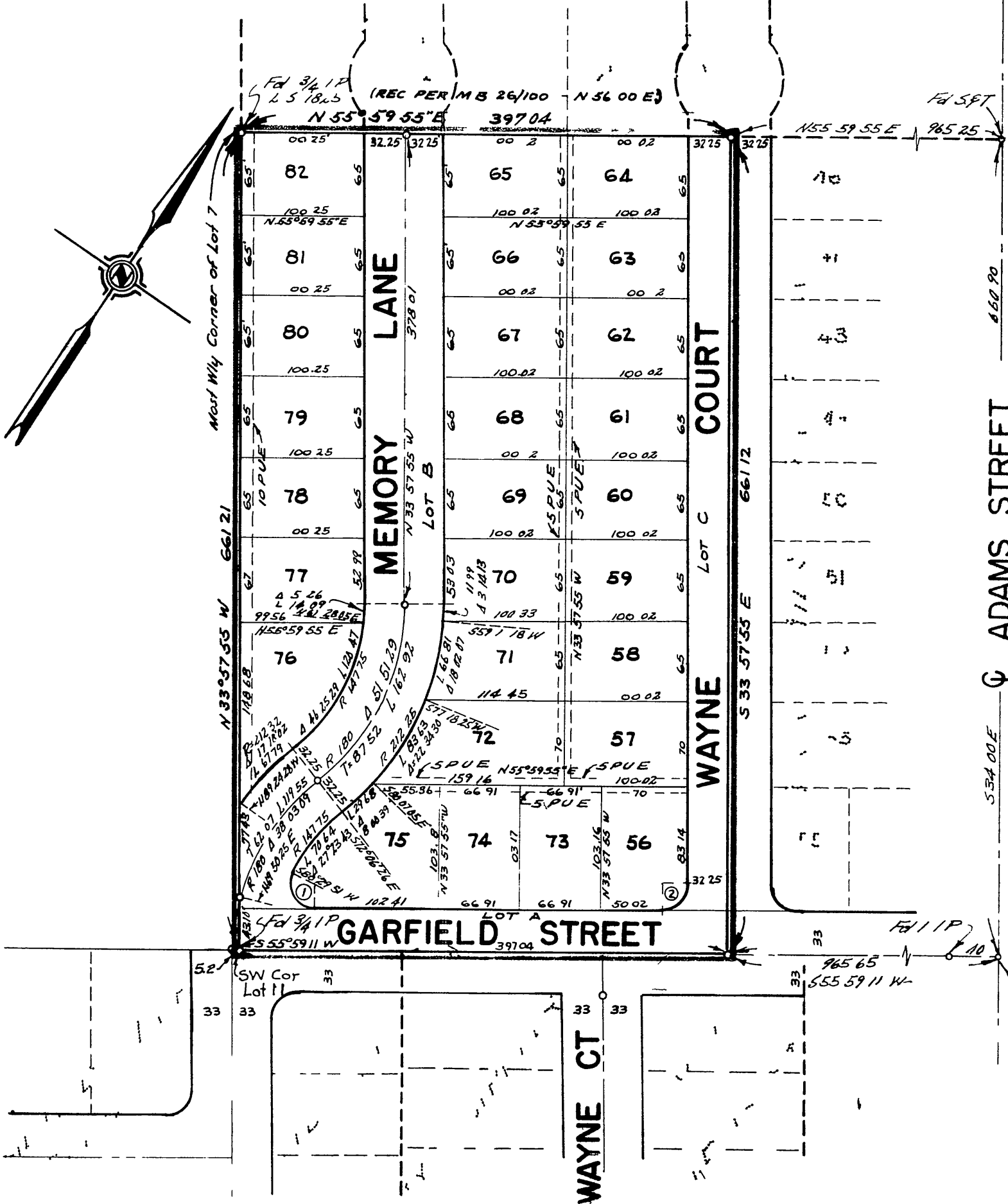
CITY PLANNING COMMISSIONS CERTIFICATE

I hereby certify that this map is as approved by the Riverside City Planning Commission at its meeting held on the 7th day of JULY, 1955

John B Reed Secretary
Riverside City Planning Commission

ENGINEERS NOTE

Bearings are based on the center line of Garfield Avenue being S 55° 59' 11" W as shown on map of BUCK HOMES ESTATES UNIT 1 in Records of Riverside County, California
Set 3/4 Iron pipe of all points shown thus unless noted otherwise
Set 2"x2 redwood stakes painted white and tagged RE 862 at all lot corners



M.B. 29/94

M.B. 29/94

No. 1 MB 29/94