

30/9

HILLSIDE MANOR

UNIT NO. 2

BEING A SUBDIVISION OF A PORTION OF THE N.E. 1/4 OF THE N.W. 1/4 OF SECTION 32, T. 2S. R. 5W., S.B.B. & M.
AUGUST, 1955

J. F. DAVIDSON, C.E.

FILED
Dec 1 1955

At 3:00 P.M.
Jack L. Ross
County Recorder
By () Notary
No.

M.B. 30/9

OWNERS' CERTIFICATE

We hereby certify that we are the owners of or have some right, title or interest in the land included in the subdivision shown on the annexed map consisting of one (1) sheet, that we are the only persons whose consent is necessary to pass a clear title to said land; that we hereby consent to the making of said map and subdivision as shown within the colored border line and we hereby offer for dedication for public use, lots A and B for street purposes, and for the construction and maintenance of all public utilities, the five and ten foot easements shown by broken lines and designated as "S.R.U.E." and "W.R.U.E."

By Frank M. Cappa Jack Ewins
Quentin Ewins

NOTARY ACKNOWLEDGEMENT

STATE OF CALIFORNIA
COUNTY OF RIVERSIDE, S.S.
On this 7th day of December 1955, before me the undersigned, a Notary Public in and for said County and State, personally appeared Frank M. Cappa, Jack Ewins, and Quentin Ewins, all of whom are partners of the partnership that executed the within instrument and they acknowledged to me that said partnership executed this instrument.

Thomas W. Deitch
Notary Public
May 27 1963

TAX BOND

I hereby certify that a bond in the sum of _____ has been executed and filed with the Board of Supervisors of the County of Riverside, California, conditioned upon the payment of all taxes, State, County, City or local and all special assessments collected as taxes, which on the time of filing of this map with the County Recorder are a lien against said property but not yet payable and said bond has been duly approved by said Board of Supervisors.

Dated this 7th day of December 1955
By Gordon A. Pequegnat County Clerk
and ex-officio Clerk of the Board of Deputy Supervisors

SUPERINTENDENT OF LIGHT AND WATER DEPT.

I hereby certify that the subdivider named on this map has deposited with the Water Department of the City of Riverside, sufficient funds to cover the cost of installing all necessary fire hydrants, together with all water mains and laterals to the curb line on all streets shown on said map; that all R.U.E. shown on this map are sufficient for all requirements of the Electric Light and Water Departments of the City of Riverside, and for the Department of Public Utilities of said City.

Dated this 7th day of December 1955
Jack R. Shepero
Assistant Superintendent of Light and Water Department
City of Riverside, California

CITY CLERK'S CERTIFICATE

STATE OF CALIFORNIA
COUNTY OF RIVERSIDE, S.S.
I, W.G. Waite, City Clerk of the City of Riverside, California, hereby certify that an undertaking satisfactory to the Council of said City guaranteeing the construction of required street improvements in this subdivision was approved and filed in my office prior to the final acceptance of this subdivision map. IN WITNESS WHEREOF, I have hereunto set my hand and affixed this official seal of the City of Riverside, California this 20th day of December 1955.

W.G. Waite
City Clerk of the City of Riverside, California

CIVIL ENGINEER'S CERTIFICATE

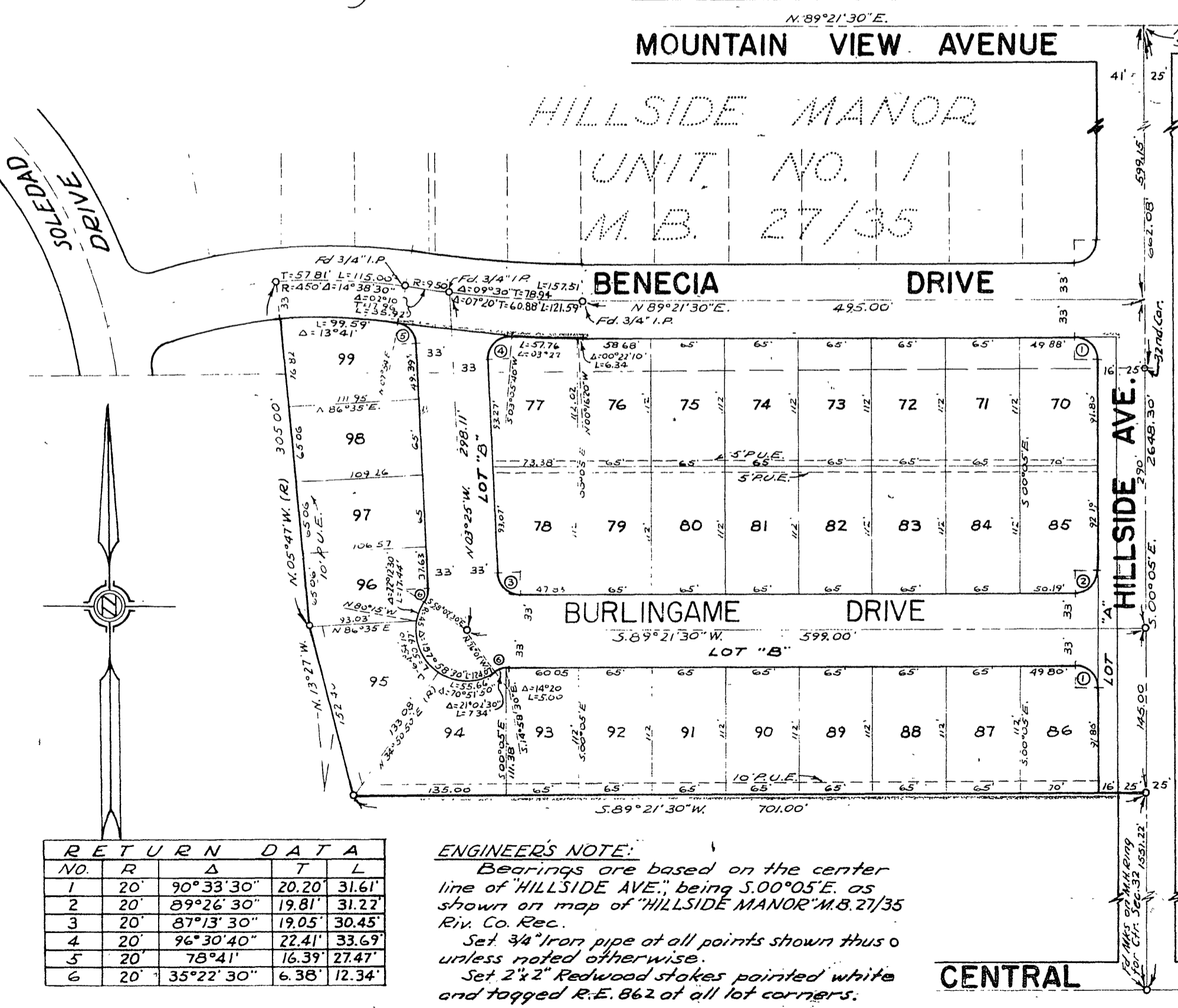
I hereby certify that I am a Registered Civil Engineer of the State of California and that this map consisting of one (1) sheet, correctly represents a survey made under my supervision during August of 1955; that all monuments shown hereon actually exist and their positions are correctly shown.

J. F. Davidson
Registered Civil Engineer No 842

DIRECTOR OF PUBLIC WORKS

I hereby certify that I have examined the within map; that the subdivision shown hereon is substantially the same as it appeared on the tentative map and any approved alterations thereof; that all provisions of Chapter 12B (Subdivision Map Act) Statutes of California, 1943, and of Ordinance No. 132B of the City of Riverside, California, and all amendments thereto have been complied with; that plans and specifications for drains, drainage sewer and drainage works sufficient to protect all lots in said subdivision from flood or overflow have been approved by me; that all easements for sewers and drains shown on said map are correct in form and contents and are approved; and I am satisfied that this map is technically correct.

Dated this 16th day of December 1955.
Jan M. ...
Director of Public Works



STREET SUPERINTENDENT'S CERTIFICATE

I hereby certify that according to the records of this office, the property shown on this map is not subject to any special assessments which have not been paid in full. DECEMBER 1955.
Dated this 10 day of December 1955.
Orval ...
Street Superintendent

COUNTY TAX COLLECTOR'S CERTIFICATE

I hereby certify that according to the records of this office as of this date, there are no liens against the property shown on this map for unpaid State, County, City or local taxes or special assessments collected as taxes.
-Dated December 8, 1955
V.M. Hyde - County Tax Collector
By ... Deputy

CITY PLANNING COMMISSION

I hereby certify that this map is as approved by the Riverside City Planning Commission at its meeting held on the 16th day of DECEMBER 1955.
J. B. ... Secretary
Riverside City Planning Commission

CITY TREASURER'S CERTIFICATE

I hereby certify that according to the records of this office as of this date, the property shown on this map is not subject to any special assessments, bonds and/or liens which have not been paid in full.
This certificate does not include any special assessments the bonds of which have not become a lien upon said property.
Dated this 21st day of November 1955.
... City Treasurer

RESOLVED

That this map consisting of one (1) sheet, be and the same is hereby, accepted as the official map of HILLSIDE MANOR, UNIT NO. 2 and the streets and easements offered thereon are accepted as public streets and easements and the City Clerk is hereby authorized and directed to attest said map by signing his name thereto as City Clerk of the City of Riverside, California and to affix the official seal of said City thereto.
I hereby certify that the foregoing resolution was adopted by the Mayor and Council of the City of Riverside, Calif. this 20th day of December 1955.

...
City Clerk of the City of Riverside, California

RETURN DATA				
NO.	R	Δ	T	L
1	20°	90°33'30"	20.20	31.61
2	20°	89°26'30"	19.81	31.27
3	20°	87°13'30"	19.05	30.45
4	20°	96°30'40"	22.41	33.69
5	20°	78°41'	16.39	27.47
6	20°	35°22'30"	6.38	12.34

ENGINEERS' NOTE:
Bearings are based on the center line of HILLSIDE AVE., being S.00°05'E. as shown on map of "HILLSIDE MANOR" M.B. 27/35 Riv. Co. Rec.
Set 3/4" Iron pipe at all points shown thus o unless noted otherwise.
Set 2"x2" Redwood stakes painted white and tagged R.E. 862 at all lot corners.

M.B. 30/9

NO. 1 MB 30/9