

30/70
M.B. 30/70

IN THE CITY OF RIVERSIDE KINGSLEY HOMES

BEING A SUBDIVISION OF A PORTION OF THE NW1/4 OF THE NW1/4 OF SECTION 33 T.2S., R.5W., S.B.B.&M.

FILED
March 21, 1956
No. 20111 at 11:00 A.M.
JACK A. ROSS
COUNTY RECORDER
by C. A. ... DEPUTY
Fee \$ 5.00
FILED BY COUNTY CLERK
SUBDN. GTEE - R.T.Co.

ALBERT A. WEBB ASSOCIATES

CIVIL ENGINEERS

ALBERT A. WEBB
R.E. 1229

HUGH M. GALLAHER
R.E. 7304

DECEMBER 1954

We hereby certify that we are the owners of, or have some right, title or interest in and to the land included within the subdivision shown upon the annexed map consisting of two (2) sheets; that we are the only persons whose consent is necessary to pass a clear title to said land; that we consent to the making and filing of this map and subdivision as shown within the colored border line, and we hereby offer for dedication to public use for street purposes, Lots A to D inclusive; and for pedestrian ways Lot E, and for construction and maintenance of all public utilities the five and ten foot easements shown by dotted lines and designated as "5' P.U.E." and "10' P.U.E." and "10' Drainage Easement" "5' x 25' P.U.E.",

I hereby certify that the subdivider named on this map has deposited with the Water Department of the City of Riverside, sufficient funds to cover cost of installing all necessary fire hydrants, together with all water mains and laterals to the curb line on all streets shown on said map; and that all public utility easements shown on this map are sufficient for all requirements of the Electric Light and Water Departments of the City of Riverside and for the Department of Public Utilities of said City.

RESOLVED: - That this map, consisting of two (2) sheets, be and the same is hereby accepted as the official map of Kingsley Homes & the streets, pedestrian walks, utility and drainage easements offered hereon are hereby accepted as public streets, pedestrian walks, utility & drainage easements; and the City Clerk is hereby authorized and directed to attest said map by signing his name thereto as City Clerk of the City of Riverside, California and to affix the official seal of said City thereto.
I hereby certify that the foregoing resolution was adopted, by the Mayor and Council of the City of Riverside this 13th day of March, 1956.

Dated March 12th 1956

A. J. Kennedy
Superintendent of Light & Water
Depts. of the City of Riverside

CENTURY LAND CO., a corporation

by W. H. Boyce
President

by Geneva Dismukes
Secretary

I hereby certify that I have examined the within map; that the subdivision shown hereon is substantially the same as it appeared on the tentative map and any approved alterations thereof; that all provisions of Chapter 128 (Subdivision Map Act) Statutes of California, 1943, and Ordinance No. 1328 of the City of Riverside, California, and all amendments thereto, have been complied with; that plans and specifications for drains, drainage, sewer and drainage works sufficient to protect all lots in said subdivision from flood or overflow have been approved by me; that all easements for sewers and drains shown on said map are correct in form and contents; and I am satisfied that this map is technically correct.

I hereby certify that according to the records of this office as of this date, the property shown on this map is not subject to any special assessments, bonds, and/or liens, which have not been paid in full. This certificate does not include any special assessments, the bonds of which have not yet become a lien upon said property.

STATE OF CALIFORNIA
COUNTY OF LOS ANGELES

On this 2nd day of March 1956, before me, the undersigned, a Notary Public in and for said County and State, personally appeared W. H. BOYCE and GENEVA DISMUKES known to me to be PRES. and SECRETARY respectively of the corporation that executed the within instrument, and acknowledged to me that such corporation executed the same.

Dated March 13 1956

S. J. ...
Director of Public Works

Dated MARCH 12 1956

J. A. ...
City Treasurer

I hereby certify that according to the records of this office, the property shown on this map is not subject to any special assessments which have not been paid in full.

WITNESS my hand and official seal.

George D. Graham
Notary Public in and for said
County and State

I hereby certify that I am a Registered Civil Engineer of the State of California and that this map, consisting of two (2) sheets correctly represents a survey made under my supervision during December 1954; that all monuments shown hereon actually exist and their positions are correctly shown.

Dated February 29 1956

Orval ...
Street Superintendent

My Commission expires JUNE 3 1956

Dated December 28 1954

Albert ...
Registered Civil Engineer No. 1229

I hereby certify that according to the records of this office as of this date, there are no liens against the property shown on this map for unpaid State, County, Municipal or local taxes or special assessments collected as taxes, except taxes now a lien, but not yet payable, which are estimated to be 1500.00.

STATE OF CALIFORNIA } 55
COUNTY OF RIVERSIDE }

I, W.G. WAITE, City Clerk of the City of Riverside, California, hereby certify that an undertaking satisfactory to the Council of said City, guaranteeing the construction of required street improvements in this subdivision was approved and filed in my office prior to the final acceptance of this subdivision map.
IN WITNESS WHEREOF I have hereunto set my hand and affixed the official seal of the City of Riverside, California, this 13th day of March, 1956.

Dated March 8 1956

V. M. Hyde
Deputy
County Tax Collector

J. A. ...
City Clerk of the City of
Riverside, California

I hereby certify that a bond in the sum of \$1500.00 has been filed with the Board of Supervisors of the County of Riverside, State of California, conditioned upon the payment of all taxes State, County, Municipal or local and all special assessments collected as taxes, which at the time of filing this map with the County Recorder are a lien against said property, but not yet payable, and said bond has been duly approved by said Board of Supervisors.

I hereby certify that this map was approved by the Riverside City Planning Commission at its meeting held on the 5th day of MARCH 1956.

Dated March 19 1956

Gordon A. Pequegat
Deputy
County Clerk and ex-officio clerk
of the Board of Supervisors

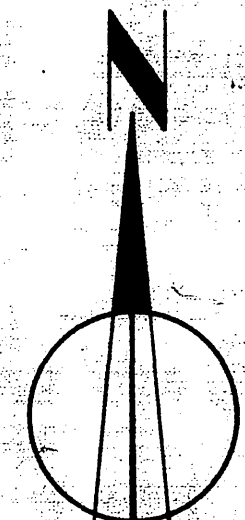
John B. Reed
Secretary of the Riverside
City Planning Commission

M.B. 30/70

N.P. 1 MB 30/70

Sheet 2 of 2 Sheets
KINGSLEY HOMES
A Por of the NW 1/4
of the NW 1/4 of Sec. 33
T25-R5W, S.B.B.&M.

M.B. 30/71



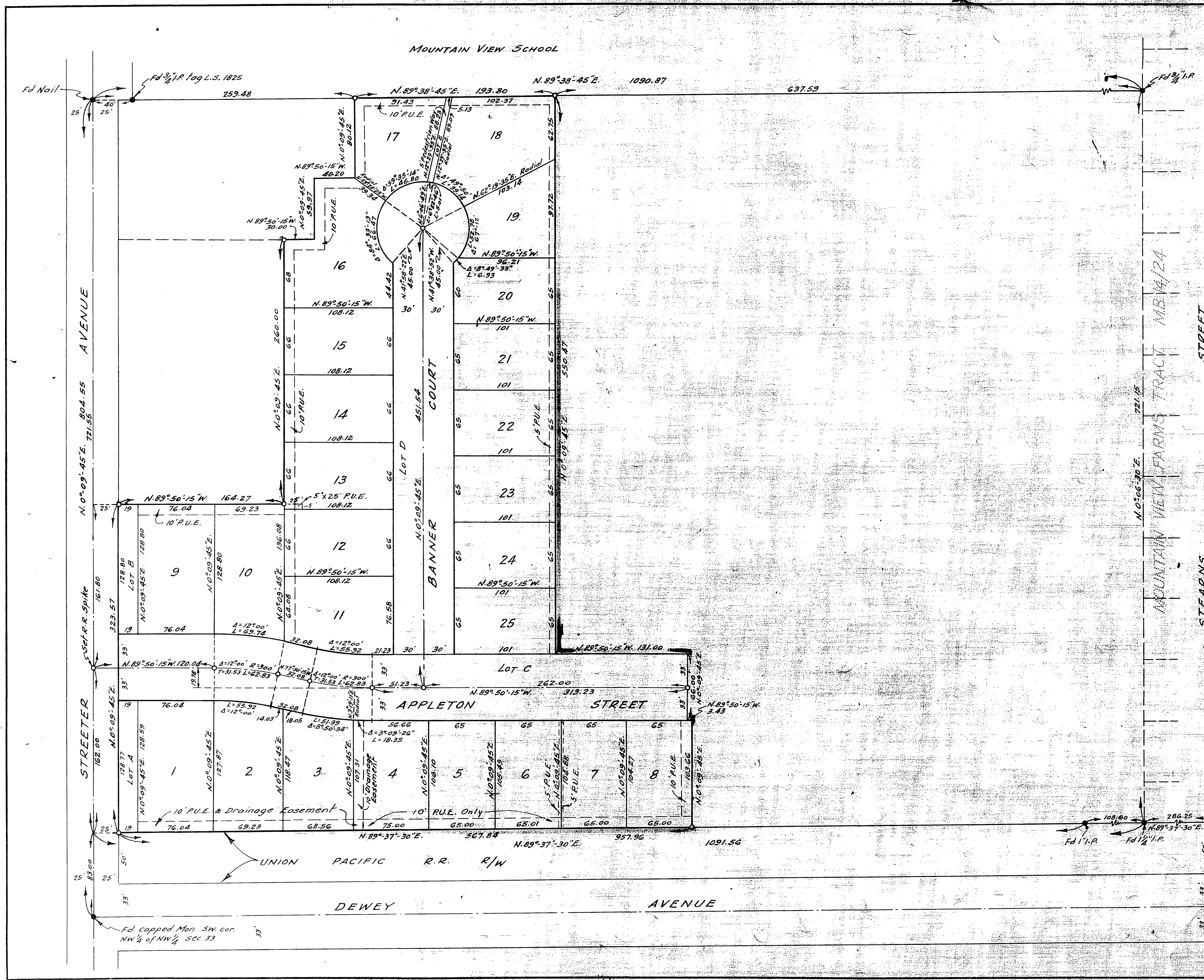
SCALE: 1"=60'

— BY —
ALBERT A WEBB ASSOCIATES
CIVIL ENGINEERS
RIVERSIDE CALIFORNIA

ENGINEERS' NOTES:
Basis of Bearings is the south line of
MOUNTAIN VIEW FARMS, taken as N. 89° 37' 30"
as same is recorded in Map Book 14 of
page 24 thereof, Records of Riverside
County, California.

Set 3/4" I.P. tagged R.E. 1229 of all points
shown thus 0, unless otherwise noted.

Set 2"x2" Redwood stakes tagged R.E. 1229
at all lot corners unless otherwise
noted.



M.B. 30/71

NO. 1 MB 30/71