

State of California } s.s.  
 County of Riverside }  
 On this 13th day of July 1956, before me, the undersigned, a Notary Public in and for the County of Riverside, State of California, personally appeared Irving L. Dudley, Katherine H. Dudley, Ben F. Snider and Lou Ella Snider, known to me to be the persons who executed the within instrument, and they acknowledged to me that they executed the same.  
 WITNES my hand and official seal  
Robert E. Kreis  
 Notary Public in and for said County and State

IN THE CITY OF RIVERSIDE  
**LINDEN SQUARE**

A SUBDIVISION OF A PORTION OF THE NORTH EAST 1/4 OF THE SOUTH EAST 1/4 OF THE SOUTH EAST 1/4 OF SECTION 24, TOWNSHIP 2 SOUTH, RANGE 5 WEST, S.B.B.M.  
 MAY, 1956  
 RIVERSIDE ENGINEERING COMPANY  
 SCALE 1"=100'

STATE OF CALIFORNIA } s.s.  
 COUNTY OF RIVERSIDE }  
 On this 13th day of July 1956, before me, the undersigned, a Notary Public in and for said County, and State personally appeared Chester P. McKenzie known to me to be the Asst Secretary and Robert E. Kreis of the corporation that executed the within instrument and they acknowledged to me that they executed the same on behalf of said corporation as Trustee  
 IN WITNESS WHEREOF I have set my hand and official seal  
Robert E. Kreis  
 Notary Public in and for said County and State

**FILED**  
 July 31 1956  
 No. \_\_\_\_\_ at 2:25 P.M.  
JACK A. ROSS  
 COUNTY RECORDER  
 by O. A. Wheat  
 DEPUTY  
 Fee \$ 5.00  
 Filed by County Clerk  
 SUB'DN G'TEE-R.T.C.

I hereby certify that I am a Registered Civil Engineer in the State of California and that this map, consisting of one (1) sheet correctly represents a survey made under my supervision during the month of May, 1956; that all monuments shown hereon actually exist and their positions are correctly shown.  
George O. Crawley  
 Registered Civil Engineer No. 9455

RESOLVED: That this map consisting of one (1) sheet be, and the same is hereby accepted as the official map of LINDEN SQUARE and the streets and easements offered hereon are accepted as public streets and easements and the City Clerk is hereby authorized and directed to attest said map by signing his name thereto as City Clerk of the City of Riverside, State of California, and to affix the official seal of said City thereto.  
W. G. Waite  
 City Clerk of the City of Riverside

I hereby certify that according to the records of this office, the property shown on this map is not subject to any special assessments which have not been paid in full.  
 Dated this 11th day of July 1956.  
Orval Adlington  
 Street Superintendent

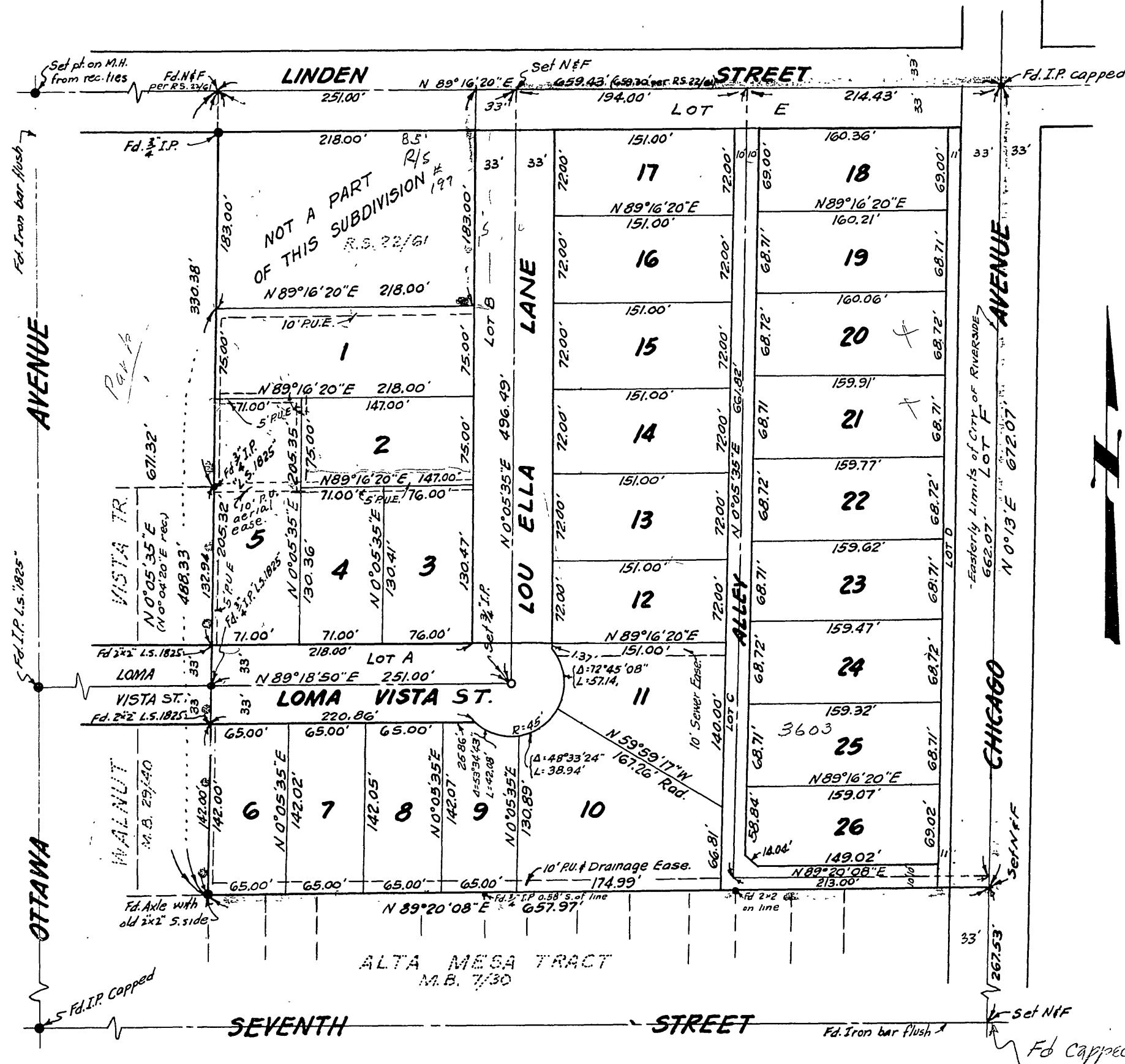
I hereby certify that according to the records of this office as of this date, the property shown on this map is not subject to any special assessments, bonds and/or liens which have not been paid in full.  
 This certificate does not include any special assessments the bonds of which have not become a lien upon said property.  
 Dated this 16th day of July 1956.  
J. A. Bunt  
 City Treasurer

ENGINEERS NOTES  
 The bearings shown on this map are based on the  $\pm$  of Linden Street (N89°16'20"E) as shown on a Record of Survey map recorded in Book 22, Page 61, Rec. of Riverside County, Set 2"x2" Redwood stakes tagged "RE. 1126" at all lot corners.

I hereby certify that the foregoing resolution was adopted by the Mayor and Council of the City of Riverside on this 24th day of July 1956.  
W. G. Waite  
 City Clerk of the City of Riverside

STATE OF CALIFORNIA } s.s.  
 COUNTY OF RIVERSIDE }  
 I, W. G. Waite, City Clerk of the City of Riverside, California, hereby certify that an undertaking satisfactory to the Council of said City guaranteeing the construction of required street improvements in this subdivision was approved and filed in my office prior to the final acceptance of this subdivision map.  
 IN WITNESS WHEREOF, I have hereunto set my hand and affixed the official seal of the City of Riverside, California, this 24th day of July 1956.  
W. G. Waite  
 City Clerk of the City of Riverside

I hereby certify that this map is as approved by the Riverside City Planning Commission at its meeting held on the 5th day of July 1956.  
John B. Reed  
 Secretary  
 Riverside City Planning Commission



I hereby certify that the subdivider named on this map has deposited with the Water Department of the City of Riverside sufficient funds to cover the cost of installing all necessary fire hydrants together with all water mains and laterals to the curb line on the streets shown on said map; and that all P.U.E. shown on said map are sufficient for all requirements of the Electric Light and Water Departments of the City of Riverside and for the Department of Public Utilities of said City.  
 Dated this 16th day of July 1956.  
A. J. Kennedy by DC  
 Superintendent of the Light and Water Dept.  
 City of Riverside, California.

I hereby certify that I have examined the annexed map; that the subdivision shown thereon is substantially the same as it appeared on the tentative map and any approved alterations thereof; that all provisions of Chapter 128 (Subdivision Map Act), Statutes of California, 1943, and of Ordinance No. 1328 of the City of Riverside, California, and all amendments thereto have been complied with, that plans and specifications for drains, drainage, sewer and drainage works sufficient to protect all lots in said subdivision from flood or overflow have been approved by me; that all easements for sewers and drains shown on said map are correct in form and contents and are approved; and I am satisfied that this map is technically correct.  
 Dated this 22nd day of July 1956.  
James F. Malmgren  
 City Engineer

I hereby certify that according to the records of this office as of this date, there are no liens against the property shown on this map for unpaid State, County or local taxes or special assessments collected as taxes, except taxes and special assessments now a lien but not yet payable, which are estimated to be \$2000.00.  
 Dated this 11th day of July 1956.  
 V. M. Hyde, County Tax Collector  
 by W. Strode Deputy.

We hereby certify that we are the owners of, or have some right, title, or interest in the land included within the subdivision included hereon; that we are the only persons whose consent is necessary to pass a clear title to said land; that we hereby consent to the making of said map and subdivision as shown within the colored border line, and hereby dedicate to public use for street purposes Lots A to F inclusive, for the construction and maintenance of sewers the 10' sewer easement, for the construction and maintenance of drainage facilities the 10' drainage easement, for the construction and maintenance of all public utilities the five and 10 foot public utility easements designated as "5' P.U.E." and "10' P.U.E."  
Irving L. Dudley Ben F. Snider  
Katherine H. Dudley Lou Ella Snider

I hereby certify that a bond in the sum of \$2000.00 has been executed and filed with the Board of Supervisors of the county of Riverside, State of California, conditioned upon the payment of all taxes, State, County, Municipal or local and all special assessments collected as taxes which, at the time of filing of the annexed map with the County Recorder, are a lien against said property but not yet payable and said bond has been duly approved by said Board of Supervisors.  
 Dated this 30 day of July 1956.  
 GORDON A. PEQUEGNAT  
 County Clerk and ex-officio  
 Clerk of the Board of Supervisors  
 by A. J. Kennedy Deputy.

We hereby certify that we are the holders of or interested in the legal title to the land included within the subdivision as shown on the annexed map consisting of one (1) sheet, by reason of being Trustee in that certain Deed of Trust recorded April 13, 1956 in Book 1896, page 166 of Official Records in the office of the Recorder of Riverside County, California, and we hereby consent to the making of said subdivision and map and the dedication of the streets as shown thereon.  
 TITLE INSURANCE and TRUST COMPANY,  
 a corporation, Trustee.  
 by Chester P. McKenzie  
 Asst Secretary

LINDEN SQUARE  
 M.B. 31/62

LINDEN SQUARE  
 M.B. 31/62