

3/83  
23

# BELVEDERE HEIGHTS NO. 2

IN THE COUNTY OF RIVERSIDE  
BEING A SUBDIVISION OF A PORTION OF THE NORTH-WEST 1/4 OF THE SOUTH-WEST 1/4 OF SECTION 21, T.2S. R. 4W., S. B. B. & M.  
MAY, 1956

J.F. DAVIDSON, C.E.

SCALE 1" = 100'

FILED  
Sept 6 1956  
No. 311  
at 9:45 A.M.  
JACK A. ROSS  
County Recorder  
by O.A. Pequegnat  
Deputy  
Fee \$500 Filed by Co. Clerk  
Sub. Fee: R.T.C.

### COUNTY PLANNING COMMISSION'S CERTIFICATE

Approved by the Riverside County Planning Commission in accordance with requirements of law in duly authorized meeting held the 27 day of August 1956.  
*Harold J. Everson* Secretary  
Riverside County Planning Commission

### COUNTY SURVEYOR'S CERTIFICATE

I hereby certify that I have examined the within annexed map; that the subdivision shown thereon is substantially the same as it appeared on the tentative map and any approved alterations thereof; that all provisions of Chapter 128 (Subdivision Map Act) Statutes of California, 1943, and Riverside County Ordinance No. 336 have been complied with and I am satisfied that this map is technically correct.  
Dated this 29 day of August 1956.

A.C. KEITH County Surveyor  
By *A.C. Keith* Deputy

### CIVIL ENGINEER'S CERTIFICATE

I hereby certify that I am a Registered Civil Engineer of the State of California and that this map consisting of one (1) sheet correctly represents a survey made under my supervision during December, 1955; that all monuments shown hereon actually exist and their positions are correctly shown.  
*J.F. Davidson*  
Registered Civil Engineer No. 862

### TAX BOND

I hereby certify that a bond in the sum of \$1000.00 has been executed and filed with the Board of Supervisors of the County of Riverside, State of California conditioned upon the payment of all taxes, State, County, Municipal or local and all special assessments collected as taxes which at the time of filing of the annexed map with the County Recorder are a lien against said property but not yet payable and said bond has been duly approved by said Board of Supervisors.  
Dated this 4 day of September 1956.  
GORDON A. PEQUEGNAT  
County Clerk and ex-officio  
Clerk of the Board of Supervisors  
By *J. Wood* Deputy

### BOARD OF SUPERVISORS' CERTIFICATE

The County of Riverside, State of California, by and through its duly authorized officers hereby approves said final map and accepts the foregoing dedications.  
Dated this 7 day of September 1956.  
COUNTY OF RIVERSIDE, STATE OF CALIFORNIA  
By *Gordon A. Pequegnat*  
Chairman of the Board of Supervisors

### ATTEST

GORDON A. PEQUEGNAT  
County Clerk and ex-officio  
Clerk of the Board of Supervisors - By *J. Wood* Deputy

### COUNTY TAX COLLECTOR'S CERTIFICATE

I hereby certify that according to the records of this office as of this date there are no liens against the property shown on the within map for unpaid State, County or local taxes or special assessments collected as taxes except taxes or special assessments now a lien but not yet payable, which are estimated to be \$1000.00.  
Dated this 27 day of July 1956.  
COUNTY TAX COLLECTOR  
By *M. Stode* Deputy

### OWNERS' CERTIFICATE

We hereby certify that we are the owners of or have some right, title or interest in the land included within the subdivision shown hereon; that we are the only persons whose consent is necessary to pass a clear title to said land and we hereby consent to the making and recording of said map and subdivision as shown within the colored border line and we hereby offer for dedication for public use, lots "A" to "G" inclusive for street purposes; and for the construction and maintenance of all public utilities, the 10 foot and five foot easements shown by dashed lines and designated as "5' P.U.E." and "10' P.U.E."

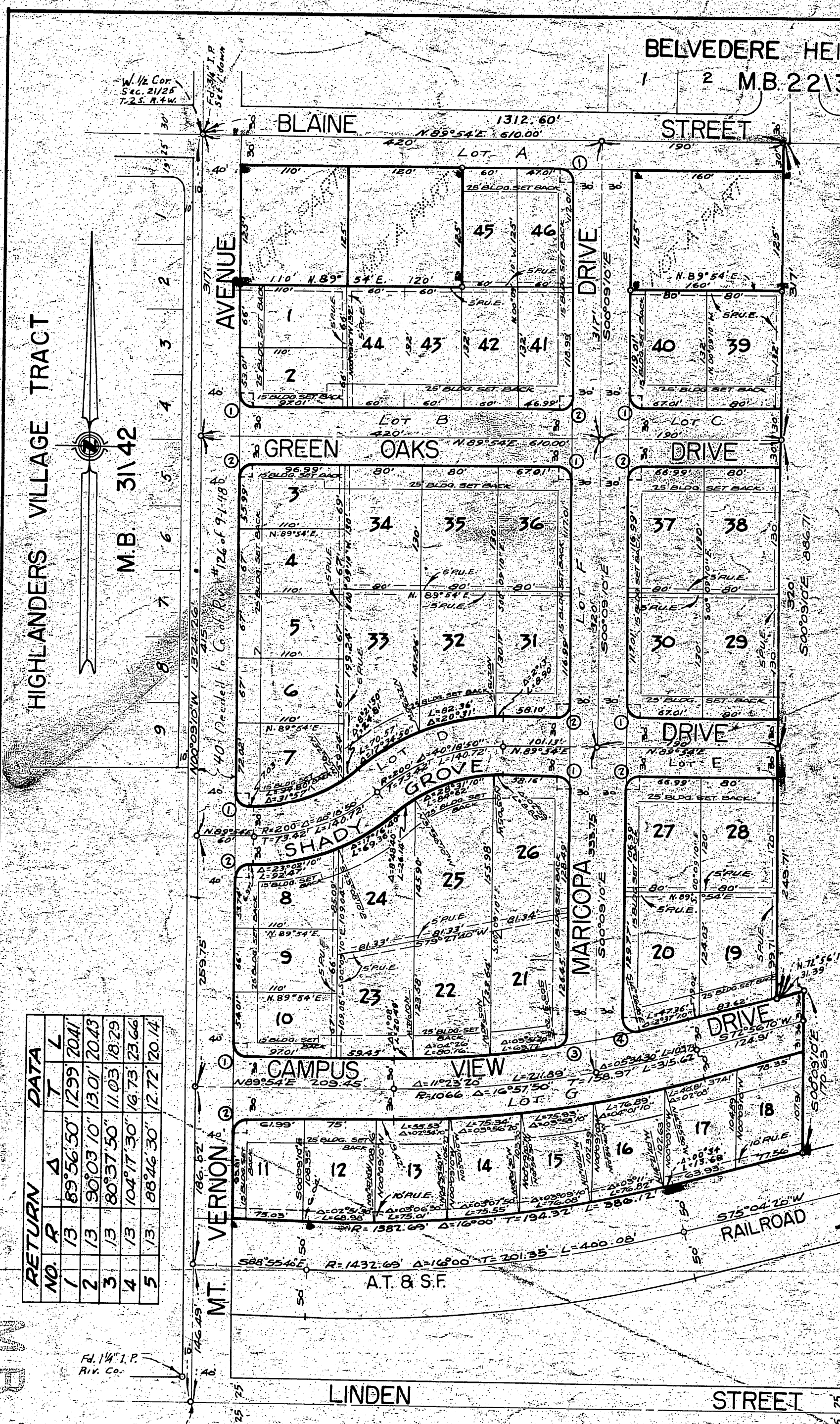
*Joe Benatiempo* *Macedonia Benatiempo*

### NOTARY ACKNOWLEDGEMENT

STATE OF CALIFORNIA } S.S.  
COUNTY OF RIVERSIDE }  
On this 16 day of August 1956, before me, the undersigned, a Notary Public in and for said County and State, personally appeared Joe Benatiempo and Macedonia Benatiempo, known to me to be the persons whose are subscribed to the within instrument and acknowledged to me that they executed the same.  
IN WITNESS WHEREOF I hereunto set my hand and affixed my official seal the day and year in this certificate first above written.  
*James C. Stagerhaug*  
Notary Public in and for said County and State

### ENGINEER'S NOTE

Bearings are based on the center line of Blaine Street as being N. 89° 54' E. as shown on map of Belvedere Heights in Map Book 22731 Records of Riverside County, California.  
Set 3/4" I.P. at all points shown thus O, unless noted otherwise.  
Set 2" x 2" Redwood Stakes painted white and tagged R.E. 862 at all lot corners.



NO.	R.	A.	T.	L.
1	13	89° 56' 50"	1299'	2041'
2	13	90° 03' 0"	1301'	2043'
3	13	80° 37' 50"	1103'	1879'
4	13	104° 17' 30"	1673'	2366'
5	13	88° 26' 30"	1272'	2014'

Belvedere Hts #2

MB 31/83

MB 31/83