

32/13

IN THE CITY OF RIVERSIDE GREGORY SUBDIVISION

BEING A SUBDIVISION OF A PORTION OF LOTS 13 AND 14, BLOCK 5 OF RIVERSIDE LAND AND IRRIGATING COMPANY LANDS AS RECORDED IN MAP BOOK I, PG. 70, RECORDS OF SAN BERNARDINO COUNTY, CALIFORNIA.
NOVEMBER, 1955

J. F. DAVIDSON, C. E.

SCALE 1" = 60'

FILED
On Nov. 1 1956

At 1:30 P.M. M.
By Jack A. Ross
County Recorder
Deputy O. A. Wheat
Fee \$5.00
No. _____

M.B. 32/13

CITY PLANNING COMMISSION

I hereby certify that this map is as approved by the Riverside City Planning Commission at its meeting held on the 30th day of August 1955.
John B. Reed
Riverside City Planning Commission

CIVIL ENGINEER'S CERTIFICATE

I hereby certify that I am a registered Civil Engineer of the State of California and that this map consisting of two (2) sheets correctly represents a survey made under my supervision during November 1955; that all monuments shown hereon actually exist and their positions are correctly shown.
J. F. Davidson
Registered Civil Engineer No. 862

SUPERINTENDENT OF LIGHT AND WATER DEPARTMENT

I hereby certify that the subdivider named on this map has deposited with the Water Department of the City of Riverside sufficient funds to cover the cost of installing all necessary fire hydrants together with all water mains and laterals to the curb line on all streets shown on said map; that all P.U.E. shown on this map are sufficient for all requirements of the Electric Light and Water Departments of the City of Riverside and for the Department of Public Utilities of said City.
Dated this 24th day of February 1956.
A. J. Kennedy
Superintendent of Light and Water Dept., City of Riverside, Calif.

CITY TREASURERS CERTIFICATE

I hereby certify that according to the records of this office as of this date, the property shown on this map is not subject to any special assessments, bonds and/or liens which have not been paid in full.
This certificate does not include any special assessments the bonds of which have not become a lien upon said property.
Dated this 17th day of April 1956.
City Treasurer
By H. A. Buntz

TAX BOND

I hereby certify that a bond in the sum of \$5000.00 has been executed and filed with the Board of Supervisors of the County of Riverside, California, conditioned upon the payment of all taxes, State, County, City or local and all special assessments collected as taxes which at the time of filing of this map with the County Recorder, are a lien against said property, but not yet payable and said bond has been duly approved by said Board of Supervisors.
Dated this 29th day of October 1955.
County Clerk and ex-officio
Clerk of the Board of Supervisors.
By Wheat Deputy

DIRECTOR OF PUBLIC WORKS CERTIFICATE

I hereby certify that I have examined the within map; that the subdivision shown hereon is substantially the same as it appeared on the tentative map and any approved alterations thereof; that all provisions of Chapter 128 (Subdivision Map Act) Statutes of California, 1943, and of Ordinance No. 1528 of the City of Riverside, California, and all amendments thereto have been complied with; that plans and specifications for drains, drainage, sewer and drainage works sufficient to protect all lots in said subdivision from flood or overflow have been approved by me; that all easements for sewers shown on said map are correct in form and contents and are approved; and I am satisfied that this map is technically correct.
Dated this 18th day of October 1956.
DIRECTOR OF PUBLIC WORKS
Donald

COUNTY TAX COLLECTOR'S CERTIFICATE

I hereby certify that according to the records of this office as of this date, there are no liens against the property shown on the within map for unpaid State, County or local taxes or special assessments collected as taxes, except taxes and special assessments now a lien but not yet payable which are estimated to be \$1000.
Dated this 17th day of April 1956.
COUNTY TAX COLLECTOR
By Strode Deputy

STREET SUPERINTENDENT'S CERTIFICATE

I hereby certify that according to the records of this office, the property shown on this map is not subject to any special assessments which have not been paid in full.
Dated this 24th day of May 1956.
Conrad
Street Superintendent

OWNER'S CERTIFICATE

We hereby certify that we are the owners of or have some right, title or interest in the land included in the subdivision shown on the annexed map consisting of two (2) sheets; that we are the only persons whose consent is necessary to pass a clear title to said land and we hereby consent to the making of said map and subdivision as shown within the colored border lines and we hereby offer for dedication for public use, lot "A" for street purposes, lot "B" for walkway, and for the construction and maintenance of all public utilities, the ten foot easements shown by dashed lines and designated as "10' P.U.E." and for drainage purposes, the ten foot easement designated as "10' Drainage Easement".
PASADENA RESEARCH LABORATORIES, INC.
John E. Gregory President
Russell R. Bannister Secretary-Treasurer
NOTARY ACKNOWLEDGEMENT

STATE OF CALIFORNIA } S.S.
COUNTY OF RIVERSIDE }
On this 22nd day of April 1956, before me, Thomas W. Duerksen, a Notary Public in and for said county and State, personally appeared John E. Gregory, known to me to be the President, and Russell R. Bannister, known to me to be the Secretary of the corporation that executed the within instrument, and known to me to be the persons who executed the within instrument on behalf of the corporation therein named, and acknowledged to me that such corporation executed the same, and acknowledged to me that such corporation executed the within instrument pursuant to its by-laws or a resolution of its board of directors.
WITNESS my hand and official seal.
Thomas W. Duerksen
Notary Public in and for said County and State

CITY CLERKS CERTIFICATE

I, W. G. Waite, City Clerk of the City of Riverside, California, hereby certify that an undertaking satisfactory to the Council of said City guaranteeing the construction of required street improvements in this subdivision was approved and filed in my office prior to the final acceptance of this subdivision map.
IN WITNESS WHEREOF, I have hereunto set my hand and affixed the official seal of the City of Riverside, State of California, this 23rd day of October, 1955.
W. G. Waite
City Clerk of the City of Riverside, California.

RESOLVED

That this map consisting of two (2) sheets be, and the same is hereby accepted as the official map of Gregory Subdivision and the streets, walkways and easements are accepted as public streets, walkways and easements and the City Clerk is hereby authorized and directed to affix said map by signing his name thereto as City Clerk of the City of Riverside, State of California, and to affix the official seal of said City thereto.
I hereby certify that the foregoing resolution was adopted by the Mayor and Council of the City of Riverside this 23rd day of October, 1955.
W. G. Waite
City Clerk of the City of Riverside, California.

M.B. 32/13

NO 1 MB 32/13

32/14
M.B. 32/14

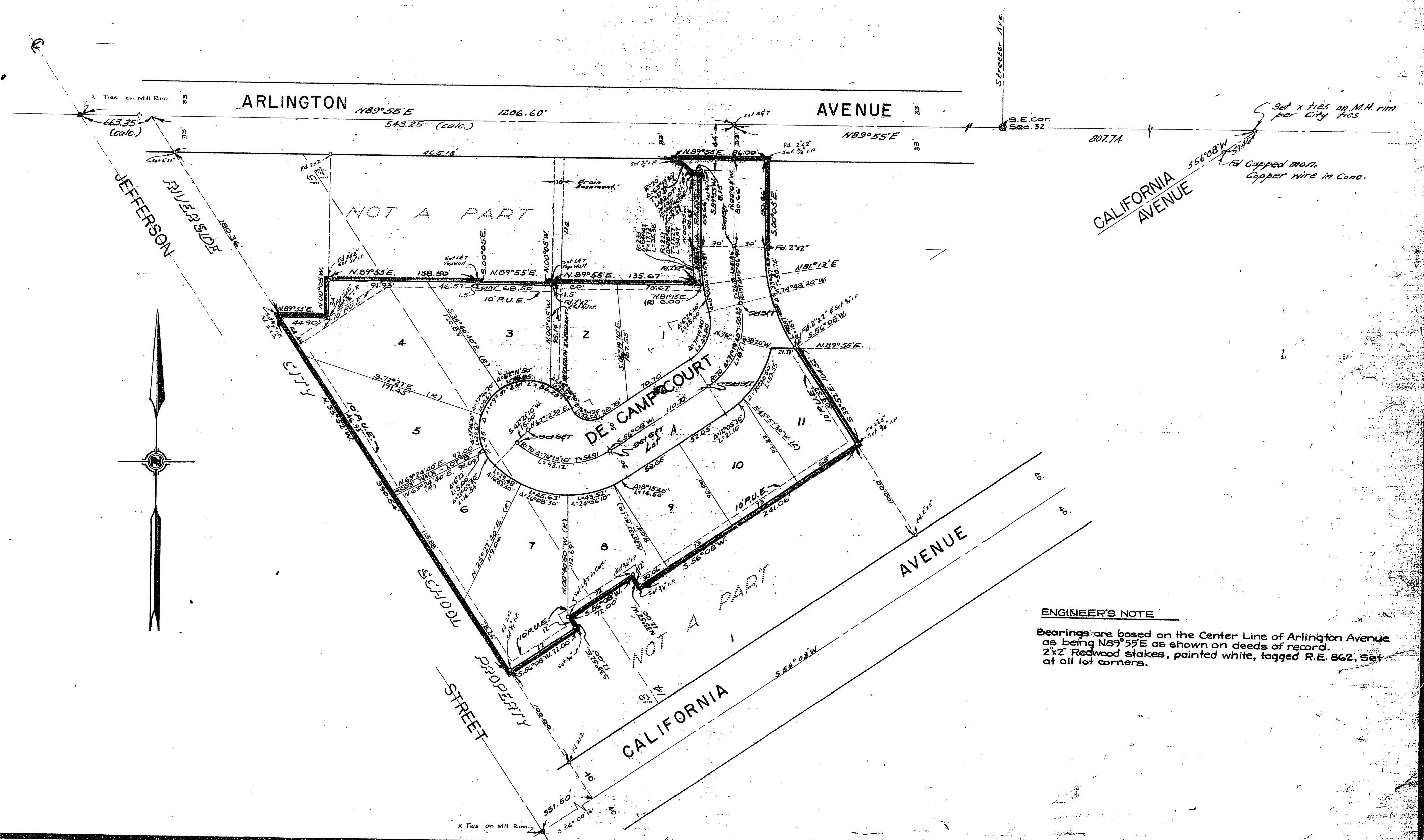
IN THE CITY OF RIVERSIDE

GREGORY SUBDIVISION

BEING A SUBDIVISION OF A PORTION OF LOTS 13 AND 14, BLOCK 5 OF RIVERSIDE LAND AND IRRIGATING COMPANY LANDS AS RECORDED IN MAP BOOK I, PG. 70, RECORDS OF SAN BERNARDINO COUNTY, CALIFORNIA.
NOVEMBER, 1955

J. F. DAVIDSON, C. E.

SCALE 1" = 60'



ENGINEER'S NOTE
 Bearings are based on the Center Line of Arlington Avenue as being N89°55'E as shown on deeds of record. 2"x2" Redwood stakes, painted white, tagged R.E. 862, Set at all lot corners.

M.B. 32/14

N. 1 MB 32/14