

326

M.B. 32/65

# IN THE COUNTY OF RIVERSIDE HILL VIEW TRACT

Being a Subdivision of a Portion of Lot 25-C Edgemont Tract as shown by map on file in Book 11 of Maps Page 30 Records of Riverside County, California

November 1956 Scale 1 in = 100 ft.  
Donald J. McKee - Licensed Surveyor

## FILED

FEB 20 1957  
Jack A. Ross  
D. A. [Signature]  
Fee \$4.50  
Filed at 1:00 PM  
By County Clerk.

We hereby certify that we are the owners of, or have some right title or interest in the land included within the subdivision shown on the within map consisting of one (1) sheet, that we are the only persons whose consent is necessary to pass a clear title to said land and we hereby consent to the making of said map and subdivision as shown within the colored border line and we hereby offer for dedication to public use for street purposes Lots A to C inclusive and for construction and maintenance of Public Utilities the 5, 10, & 15 easements shown by dotted lines and designated as 5, 10 & 15 P.U.E.

I hereby certify that according to the records of this office as of this date there are no liens against the property shown on the annexed map for unpaid State, County or local taxes or Special Assessments collected as taxes, except taxes and special assessments now a lien but not yet payable, which are estimated to be  
Dated this 7<sup>th</sup> day of February 1957  
[Signature]  
Deputy  
V.M. HYDE, County Tax Collector

VALLEY HOME DEVELOPMENT COMPANY, a corporation  
Walter Warner  
PRESIDENT  
Agnes Warner  
SECRETARY

Approved by the Riverside County Planning Commission in accordance with the requirements of law in duly authorized meeting held February 14 1957  
by [Signature]  
Secretary

I hereby certify that I am a Licensed Land Surveyor in the State of California and that this map consisting of one (1) sheet correctly represents a survey made by me in November 1956 and that all the monuments shown hereon actually exist and their positions are correctly shown  
Donald J. McKee  
Licensed Land Surveyor No 1825

I hereby certify that a bond in the sum of \_\_\_\_\_ cash has been (executed and filed) deposited with the Board of Supervisors of the County of Riverside State of California conditioned upon the payment of all taxes State, County, Municipal, or local and all special assessments collected as taxes, which at the time of filing of the annexed map with the County Recorder are a lien against said property, but not yet payable, said bond has been duly approved by said Board of Supervisors  
Dated this 18<sup>th</sup> day of February, 1957  
G.A. Pequegnat  
County Clerk and ex-officio Clerk of the Board of Supervisors

I hereby certify that I have examined the within map, that the subdivision shown hereon is substantially the same as it appeared on the tentative map, and any approved alterations thereof, that all provisions of the State Law and County Ordinance No 33c have been complied with, and I am satisfied that this map is technically correct.  
Dated this 14<sup>th</sup> day of Feb. 1957  
A.C. KEITH, County Surveyor

by [Signature]  
Deputy

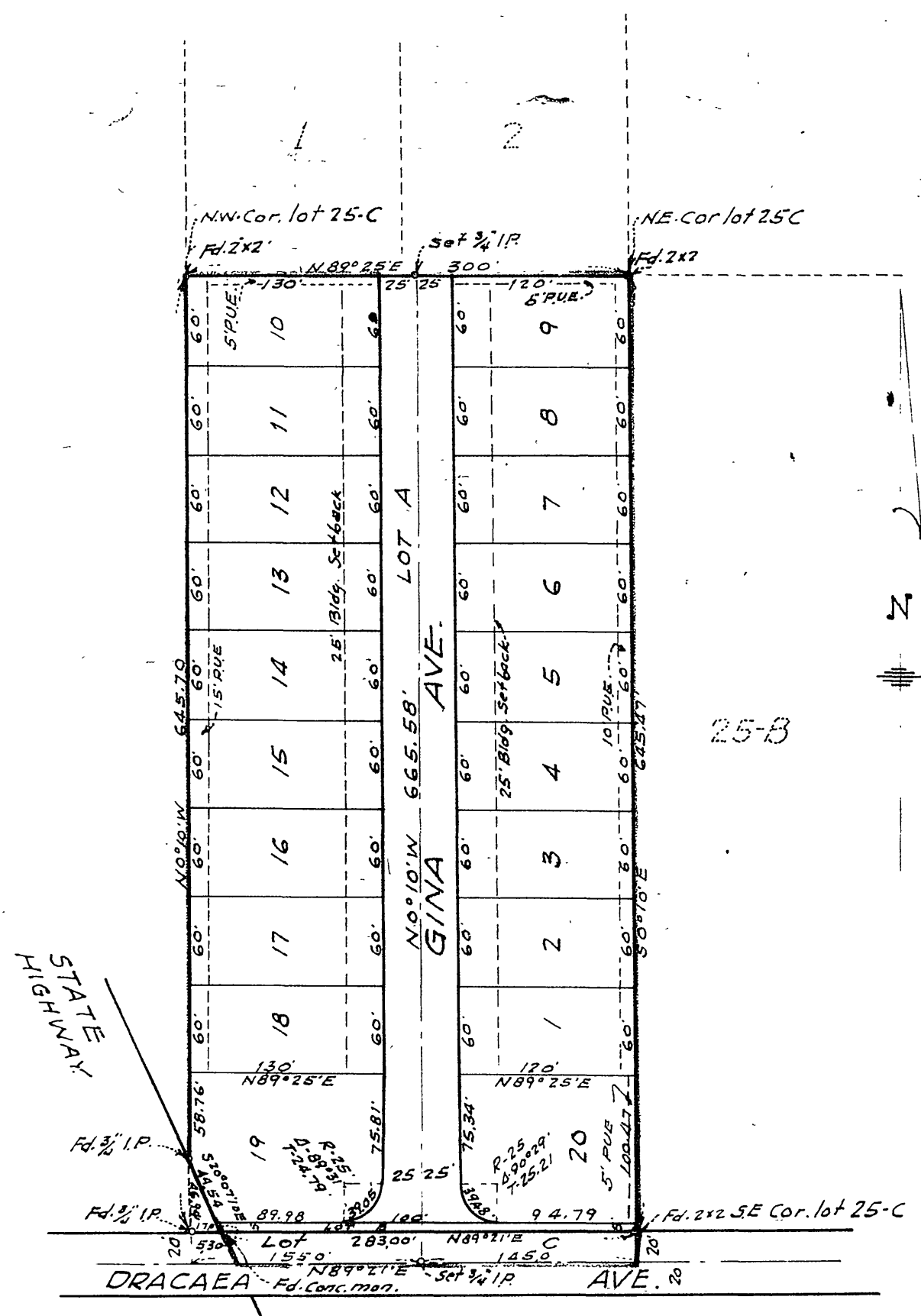
by G.C. Keith  
Deputy

The County of Riverside State of California by and through its duly authorized officers, hereby accept the foregoing dedications and approves said final map  
Dated this 18<sup>th</sup> day of February 1957  
COUNTY OF RIVERSIDE STATE OF CALIFORNIA  
by [Signature]  
Chairman of the Board of Supervisors

STATE OF CALIFORNIA }  
COUNTY OF RIVERSIDE } ss.  
on this 8<sup>th</sup> day of FEBRUARY 1957 before me the undersigned a Notary Public in and for the County of Riverside State of Calif. personally appeared:  
WALTER WARNER known to me to be the President and  
AGNES WARNER known to me to be the Secretary of the corporation that executed the within instrument, and known to me to be the persons who executed the within instrument on behalf of the corporation therein named, and acknowledged to me that such corporation executed the same and acknowledged to me that such corporation executed the within instrument pursuant to its by-laws or a resolution of its board of directors  
WITNESS my hand and official seal.  
[Signature]  
Notary Public in and for said County and State

ATTEST  
G.A. Pequegnat  
County Clerk and ex-officio  
Clerk of the Board of Supervisors  
by [Signature]  
Deputy

Note: Bearings are based on the center line of Dracaea Ave. Shown as N89°21'E on Map of Edgemont Tract Rec. in Book 11 of Maps pg. 30 Records of Riverside County California  
Set 2x2 Redwood Stakes tagged L.S. 1825 set at all lot corners  
Set 3/4 iron pipe as shown.



M.B. 32/65

No. 2 MB 32/65