

# Non-residential 'M-2' General Manufacturing Subdivision N<sup>o</sup> M-12

BEING A SUBDIVISION OF A PORTION OF THE N.W. 1/4 SECTION 24, T.2S, R.5W., S.B.B.&M.

JUNE, 1957

J.F. DAVIDSON, C.E.

SCALE: 1" = 100'

**FILED**  
On Sep 11 1957

At 10:15 A.M.

Jack A. Ross  
County Recorder

By D. A. Mead  
Deputy

Fee \$5.00

No. \_\_\_\_\_

Filed By County Clerk

M.B. 33/67

**CITY PLANNING COMMISSION**

I hereby certify that this map is as approved by the Riverside City Planning Commission at its meeting held on the 22<sup>nd</sup> day of August, 1957.

R. James Fairman  
Director of Planning

**CIVIL ENGINEERS CERTIFICATE**

I hereby certify that I am a registered Civil Engineer of the State of California, and that this map consisting of one (1) sheet correctly represents a survey made under my supervision during November, 1956. That all monuments shown hereon actually exist and their positions are correctly shown.

J. F. Davidson  
Registered Civil Engineer N<sup>o</sup> 862

**SUPERINTENDENT OF LIGHT & WATER DEPT.**

I hereby certify that the subdivider named on this map has deposited, with the water department of the city of Riverside, sufficient funds to cover the cost of installing all necessary fire hydrants together with all water mains and laterals to the curb line on all streets shown on said map, that all P.U.E. shown on this map are sufficient for all requirements of the Electric Light and Water Department of the City of Riverside and for for the Department of Public Utilities of said City. Dated this 26<sup>th</sup> day of August, 1957.

A. J. Kennedy by P.C.  
Superintendent of Light & Water, Dept. of City of Riverside

**CITY TREASURER CERTIFICATE**

I hereby certify that according to the records of this office as of this date, the property shown on this map is not subject to any special assessments, bonds and/or liens which have not been paid in full. This certificate does not include any special assessments the bonds of which have not become a lien upon said property. Dated this 23<sup>rd</sup> day of July, 1957. City Treasurer

J. A. Brant

**TAX BOND**

I hereby certify that a bond in the sum of \$600.00 has been executed and filed with the Board of Supervisors of the County of Riverside, California, conditioned upon the payment of all taxes, State, County, City or local and all special assessments collected as taxes which at the time of filing of this map with the County Recorder, are a lien against said property, but not yet payable and said bond has been duly approved by said Board of Supervisors. Dated this 10<sup>th</sup> day of Sept, 1957.

County Clerk and ex-officio  
Clerk of the Board of Super-  
visors  
By Marion Mead Deputy

**DIRECTOR OF PUBLIC WORKS CERTIFICATE**

I hereby certify that I have examined the within map that the subdivision shown hereon is substantially the same as it appeared on the tentative map and any approved alterations thereof, that all provisions of Chapter 128 (Subdivision Map Act) Statutes of California, 1943 and of Ordinance N<sup>o</sup> 1328 of the City of Riverside, California, and all amendments thereto have been complied with, that plans and specifications, for drains, drainage, sewer and drainage works sufficient to protect all lots in said subdivision from flood or overflow have been approved by me; that all easements for sewers shown on said map are correct in form and contents and are approved, and I am satisfied that this map is technically correct. Dated this 30<sup>th</sup> day of August, 1957.

Director of Public Works  
James J. Martinec

**STREET SUPERINTENDENTS CERTIFICATE**

I hereby certify that according to the records of this office, the property shown on this map is not subject to any special assessments which have not been paid in full. Dated this 23<sup>rd</sup> day of July, 1957.

James J. Martinec  
STREET SUPERINTENDENT

**COUNTY TAX COLLECTOR'S CERTIFICATE**

I hereby certify that according to the records of this office as of this date, there are no liens against the property shown on the within map for unpaid State, County or local taxes or special assessments collected as taxes, except taxes and special assessments now a lien but not yet payable which are estimated to be \$600.00. Dated this 23<sup>rd</sup> day of July, 1957.

VM HYDE, COUNTY TAX COLLECTOR  
By J. H. Stride Deputy

**OWNER'S CERTIFICATE**

We hereby certify that we are the owners of or have some right, title or interest in the land included in the subdivision shown on the annexed map consisting of one (1) sheet, that we are the only persons whose consent is necessary to pass a clear title to said land and we hereby consent to the making of said map and subdivision as shown within the colored border lines and we hereby offer for dedication Lot 'A' for street purposes and for the construction and maintenance of all public utilities, the five and ten foot easements shown by dashed lines and designated as "5 PUE" and "10 PUE".

L.V.W. Brown Estate a Partnership  
Witnesses to Mark  
Marie Johnson and Wendell Johnson Partner  
Colanoff 6957 Capetions Way, By HER MARK Partner  
Riverside BARBARA B. HOLMAN

**CITY CLERK'S CERTIFICATE**

I, W.G. Waite, City Clerk of the City of Riverside, California hereby certify that an undertaking satisfactory to the Council of said City guaranteeing the construction of required street improvements in this subdivision was approved and filed in my office prior to the final acceptance of this subdivision map. I WITNESS THEREOF, I have hereunto set my hand and affixed the official seal of the City of Riverside, State of California, this 3<sup>rd</sup> day of Sept, 1957.

W.G. Waite  
City Clerk of the City of Riverside California

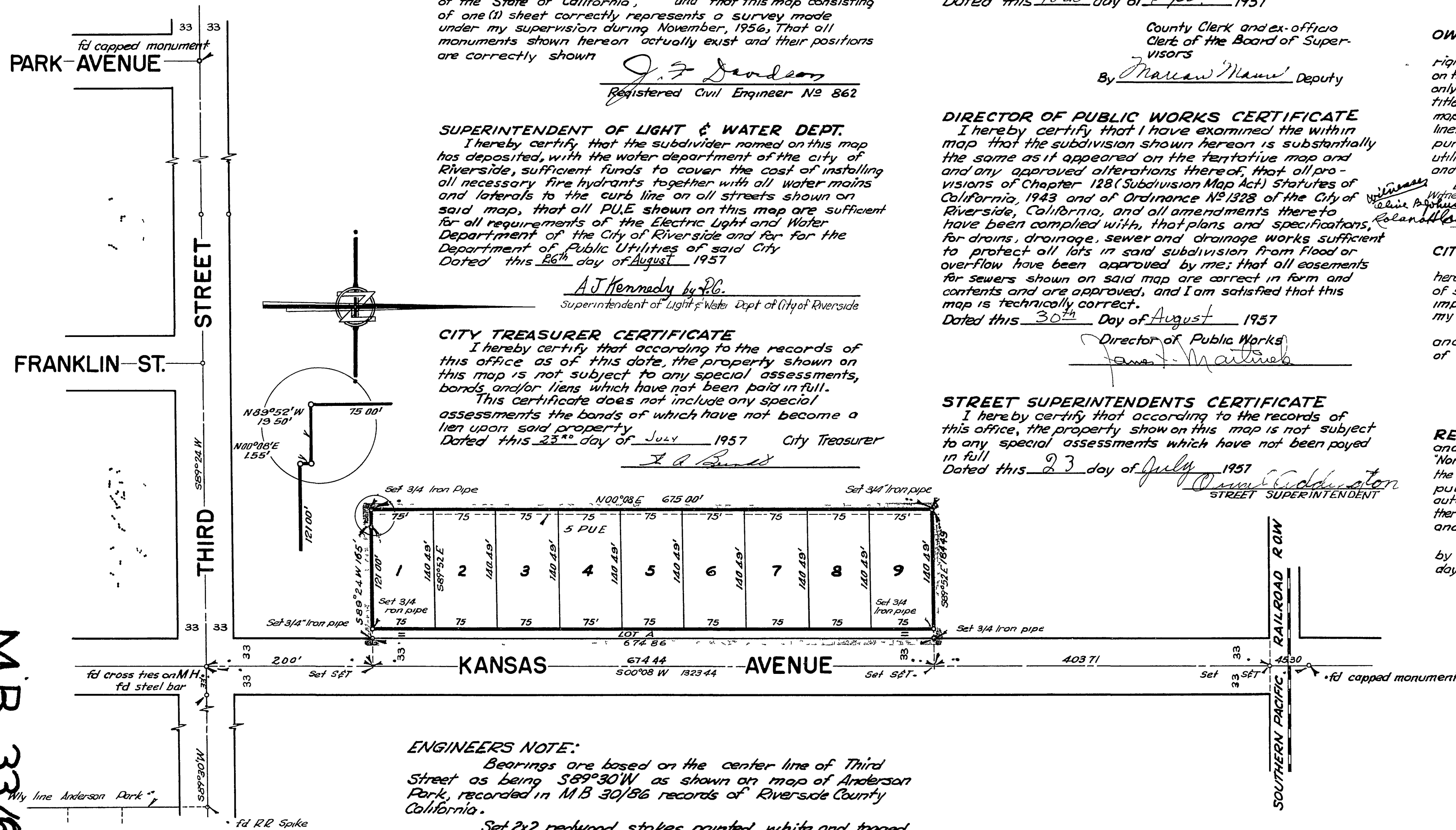
**RESOLVED:** That this map consisting of one (1) sheet be, and the same is hereby accepted as the official map of "Non-residential 'M-2' General Manufacturing Subdivision N<sup>o</sup> M-12 and the streets and easements offered hereon are accepted as public streets and easements and the City Clerk is hereby authorized and directed to attest said map by signing his name thereto as City Clerk of the City of Riverside, State of California, and to affix the official seal of said City thereto. I hereby certify that the foregoing resolution was adopted by the Mayor and Council of the City of Riverside this 3<sup>rd</sup> day of Sept, 1957.

W.G. Waite  
City Clerk of the City of Riverside Calif.

**ENGINEERS NOTE:**

Bearings are based on the center line of Third Street as being S89°30'W as shown on map of Anderson Park, recorded in M.B. 30/56 records of Riverside County California.

Set 2x2 redwood stakes painted white and tagged RE862 at all lot corners unless noted otherwise.



M.B. 33/67

State of California ss  
County of Riverside)  
On this 29 day of July, 1957, before me Marion Bruff a Notary Public in and for said County and State, personally appeared Charlotte B. Meering and Barbara B. Holman, known to me to be two of the partners of the partnership that executed the within instrument, and acknowledged to me that such partnership executed the same. WITNESS my hand and official seal.  
Marion Bruff  
Notary Public in and for said County and State  
My commission Expires May 27 1958