

SIERRA FOOTHILLS UNIT 6

BEING A SUBDIVISION OF A PORTION OF LOTS 19, 20, 24, 25, E, U AND V OF ALCAZAR TRACT AS RECORDED IN BOOK 16, PAGE 31 TO 34, RECORDS OF RIVERSIDE COUNTY, CALIFORNIA, AUGUST, 1957 & A POR. OF LOT A, SIERRA FOOTHILLS NO. 5, MB 33-66, RIV. G. SCALE 1" = 80'

FILED
Feb. 4, 1958

No. _____ at 2:00 P. M.
JACK A. ROSS
County Recorder
by O. A. Ross Deputy
Fee \$5.00
Filed by County Clerk
Subdiv. G'fee - R. T. Co.

OWNER'S CERTIFICATE

We hereby certify that we are the owners of or have same right title or interest in the land included within the subdivision shown hereon, that we are the only persons whose consent is necessary to pass clear title to said land and we hereby consent to the making and recordation of said map and subdivision as shown within the colored border line and we hereby offer for dedication for public use for street purposes Lots A to E inclusive and for the construction and maintenance of all public utilities the six foot easements shown by dashed lines and designed as "6' P.U.E."

DEVELOPMENT CORPORATION OF RIVERSIDE, A California Corporation
By O. P. Ladd Vice President and J. E. Coffey Secretary

TAX BOND

I hereby certify that a bond in the sum of \$ _____ has been executed and filed with the Board of Supervisors of the County of Riverside, State of California, conditioned upon the payment of all taxes, State, County, Municipal or local or all special assessments collected as taxes, which at the time of the filing of the annexed map with the County Recorder are a lien against said property, but not yet payable and said bond has been approved by said Board of Supervisors.

Dated this 3rd day of Feb. 1958
By GORDON A. PEQUEGNAT County Clerk and Ex-Officio Clerk of the Board of Supervisors
By _____ Deputy

BOARD OF SUPERVISOR'S CERTIFICATE

The County of Riverside, State of California, by and through its duly authorized officers hereby approves said final map and accepts the foregoing dedications.

Dated this 3rd day of Feb. 1958
COUNTY OF RIVERSIDE, STATE OF CALIFORNIA
By Jawad Chairman, Board of Supervisors

CORPORATE ACKNOWLEDGMENT

STATE OF CALIFORNIA } ss
COUNTY OF RIVERSIDE }
On this 17th day of January 1958, before me Robert E. Kries a Notary Public in and for said county and state, personally appeared O. P. Ladd known to me to be the vice president and L. E. Coffey known to me to be the secretary of the corporation that executed the within instrument on behalf of the corporation therein named, and acknowledged to me that such corporation executed the within instrument pursuant to its by-laws or a resolution of its board of directors.
WITNESS MY HAND AND OFFICIAL SEAL
By Robert E. Kries My Commission Expires Mar 15, 1958
Notary Public in and for said County and State

CORPORATE ACKNOWLEDGMENT

STATE OF CALIFORNIA } ss
COUNTY OF RIVERSIDE }
On this day of Jan. 1958, before me _____ a Notary Public in and for said County and State, personally appeared _____ known to me to be the vice president and _____ known to me to be the secretary of the corporation that executed the within instrument on behalf of the corporation therein named, and acknowledged to me that such corporation executed the within instrument pursuant to its by-laws or a resolution of its board of directors.
WITNESS MY HAND AND OFFICIAL SEAL
My Commission Expires _____
Notary Public in and for said County and State

COUNTY SURVEYOR'S CERTIFICATE

I hereby certify that I have examined the within annexed map, that the subdivision shown thereon is substantially the same as it appeared on the tentative map and any approved alterations thereof, that all provisions of Chapter 128 (Subdivision Map Act) Statutes of California 1943 and Riverside County Ordinance No 336 have been complied with and I am satisfied that this map is technically correct.
Dated this 27th day of January 1958
By A. KEITH County Surveyor
By G. T. Worsley Deputy

LAND SURVEYOR'S CERTIFICATE

I hereby certify that I am a licensed land surveyor of the State of California and that this map consisting of one sheet correctly represents a survey made by me in July 1957; that all monuments shown hereon actually exist and their positions are correctly shown.
Dated Sept. 12, 1957
By W. R. Maxwell Licensed Land Surveyor No 2788

ATTEST

GORDON A. PEQUEGNAT
County Clerk and Ex-Officio
Clerk of the Board of Supervision
By Madeline Bause Deputy

COUNTY PLANNING COMMISSION'S CERTIFICATE

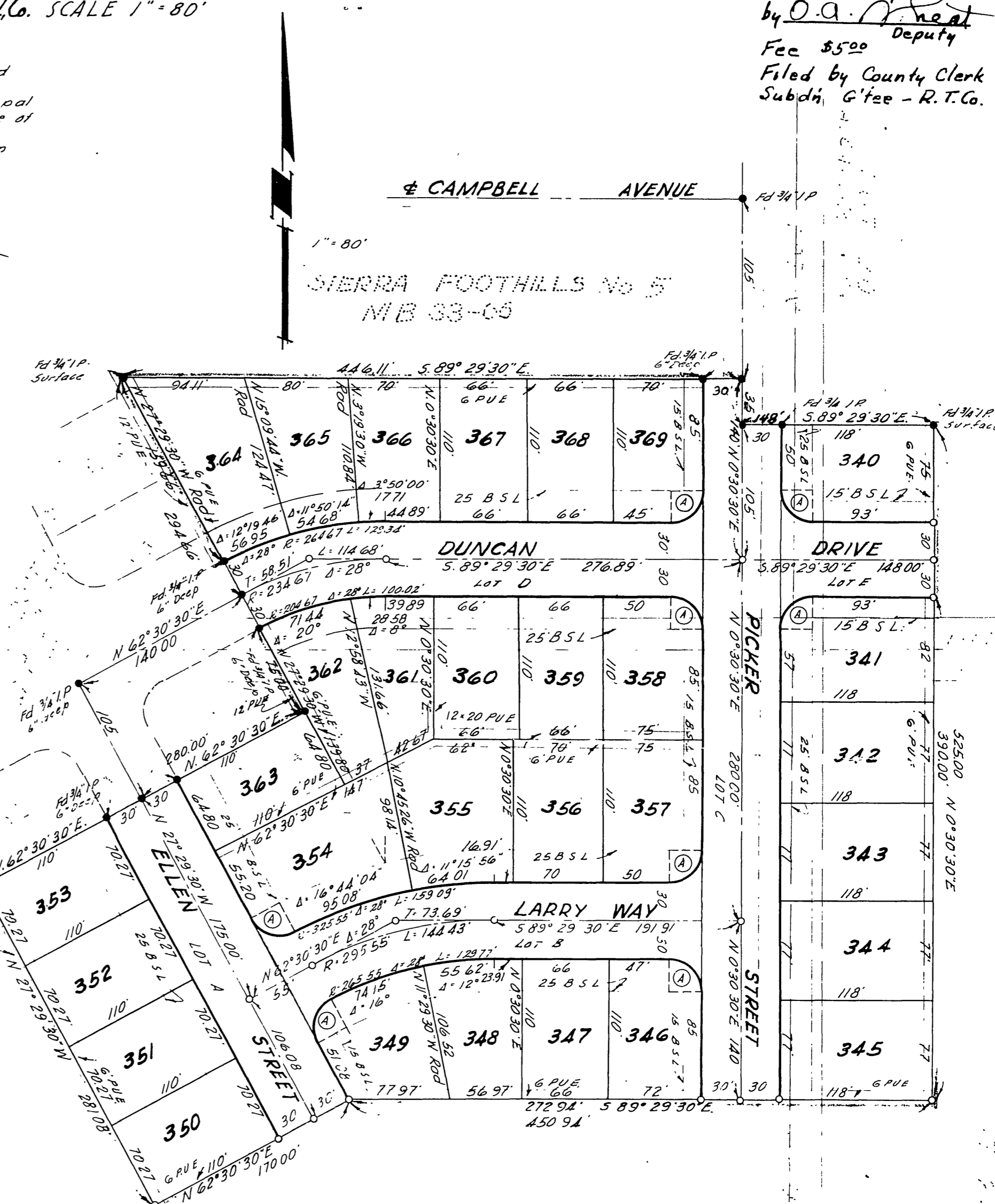
Approved by the Riverside County Planning Commission in accordance with requirements of law in duly authorized meeting held the 28 day of Jan. 1958
By Harold J. Evenden Secretary
Riverside County Planning Commission

COUNTY TAX COLLECTOR'S CERTIFICATE

I hereby certify that according to the records of this office as of this date, there are no liens against the property shown on the within map for unpaid State, County or local taxes or special assessments collected as taxes.
Dated this 21st day of Jan. 1958
By V. M. Hyde County Tax Collector
By _____ Deputy

NOTES

- Basis of Bearings is \pm of Duncan Drive (N 62° 30' 30" E) as shown on Sierra Foothills Unit No. 4, M.B. 32, Page 95.
- 2" Redwood hub set at all lot corners unless otherwise noted.
- States are painted white and stamped or tagged "LS 2788."
- B.S.L. Indicates Building Setback Line
- P.U.E. Indicates Public Utility Easement
- Indicates 3/4" Iron Pipe Set and tagged "LS 2788"
- Indicates monument found.



CURVE DATA
① R = 25.00'
Δ = 90°
T = 25.00'
L = 39.27'

MB 34/47