

IN THE CITY OF RIVERSIDE, CALIFORNIA

Sheet 1 of 2 Sheets

OAK MANOR NO. 6

BEING A SUBDIVISION OF A PORTION OF LOT 14, BLOCK 15 OF R.L.&I CO. LANDS
PER MAP BOOK 1 PAGE 70 SAN BERNARDINO COUNTY RECORDS

FILED

APR 22 1958

Jack A. Ross
City Clerk
Filed by County Clerk
at 8:10 P.M.

-BY-

ALBERT A. WEBB ASSOCIATES
CIVIL ENGINEERS
FEBRUARY 1958

We hereby certify that we are the owners of, or have some right, title or interest in and to the land included within the subdivision shown upon the annexed map consisting of two (2) sheets; that we are the only persons whose consent is necessary to pass a clear title to said land and we hereby consent to the making and filing of this map and subdivision as shown within the colored border line, and we hereby offer for dedication to public use for street purposes Lots A to B inclusive, and for construction and maintenance of all public utilities the five and ten foot public utility easements designated as "5' P.U.E." and "10' P.U.E."

Russell H. Kruger Frances M. Kruger

I hereby certify that the subdivider named on this map has deposited with the Water Department of the City of Riverside sufficient funds to cover the cost of installing all necessary fire hydrants, together with all water mains and laterals to the curb line on all streets shown on this map; and that all public utility easements shown on this map are sufficient for all requirements of the Electric Light and Water Department of the City of Riverside and for the Department of Public Utilities of the said City.

Dated April 11, 1958 A. J. Kennedy
Superintendent of Light and Water
Departments of City of Riverside

I hereby certify that according to the records of this office as of this date, the property shown on this map is not subject to any special assessments, bonds and/or liens which have not been paid in full. This certificate does not include any special assessments, the bonds of which have not yet become a lien upon said property

Dated 4-10 - 1958 J. L. Whight
City Treasurer

I hereby certify that according to the records of this office the property shown on this map is not subject to any special assessments which have not been paid in full.

Dated April - 11 1958 Carol Robinson
Street Superintendent

I hereby certify that according to the records of this office as of this date, there are no liens against the property shown on this map for unpaid State, County, municipal or local taxes, or special assessments collected as taxes, except taxes and special assessments now a lien, but not yet payable which are estimated at \$500.00

Dated April 11, 1958 V.M. HYDE
County Tax Collector
By A. L. L. de Deputy

RESOLVED:- That this map, consisting of two (2) sheets, be and the same is hereby accepted as the official map of OAK MANOR No. 6 that the streets and public utility easements hereon are hereby accepted as public streets and public utility easements, and the City Clerk is hereby authorized and directed to attest said map by signing his name thereto as City Clerk of the City of Riverside, California, and to affix the seal of said City thereto.

I hereby certify that the foregoing resolution was adopted by the Mayor and Council of the City of Riverside this 25th day of April 1958

J. R. White
City Clerk of the City of
Riverside, California

I hereby certify that this map was approved by the Riverside City Planning Commission at its meeting held on the 20th day of March 1958

R. James Fairman
Director of Planning

I hereby certify that I have examined the within map; that the subdivision shown hereon is substantially the same as it appeared on the tentative map and any approved alterations thereof; that all provisions of Chapter 128 (Subdivision Map Act), Statutes of California, 1943, and of Ordinance No. 1328 of the City of Riverside, California, and all amendments thereto, have been complied with; that plans and specifications for drains, drainage works sufficient to protect all lots in said subdivision from flood or overflow have been approved by me; that all easements for sewers and drains shown on said map are correct in form and contents and are approved; and I am satisfied that this map is technically correct.

Dated April 14 1958 Martinez
Director of Public Works

I hereby certify that I am a Registered Civil Engineer of the State of California and that this map consisting of two (2) sheets, correctly represents a survey made under my supervision during January 1958, and that all monuments shown hereon actually exist and their positions are correctly shown or shall be in position not later than October 1958.

Dated MAR 31st 1958 Ernest N. Webb
Registered Civil Engineer No. 9876

I hereby certify that a bond in the sum of \$500.00 has been filed with the Board of Supervisors of the County of Riverside, State of California, conditioned upon the payment of all taxes, State, County, municipal or local and all special assessments collected as taxes, which at the time of filing this map with the County Recorder are a lien against said property but not yet payable, and said bond has been duly approved by said Board of Supervisors.

Dated April 21, 1958 Gordon A. Pequegnat
County Clerk and ex-officio clerk
of the Board of Supervisors

By Madelle Bauer Deputy

STATE OF CALIFORNIA } S.S.
COUNTY OF RIVERSIDE }

On this 11th day of April 1958, before me, the undersigned, a Notary Public in and for said County and State, personally appeared Russell H. Kruger and Frances M. Kruger known to me to be the persons who executed the within instrument and they acknowledged to me that they executed the same.

WITNESS my hand and official seal.

Thomas W. Dierker
Notary Public in and for said County and State

My commission expires May 27th 1959

STATE OF CALIFORNIA } S.S.
COUNTY OF RIVERSIDE }

I, W.G. WAITE, City Clerk of the City of Riverside, California, hereby certify that an undertaking satisfactory to the Council of said City, guaranteeing the construction of required street improvements in this subdivision was approved and filed in my office prior to the final acceptance of this subdivision map.

IN WITNESS WHEREOF I have hereunto set my hand and affixed the official seal of the City of Riverside, California, this 15th day of April 1958.

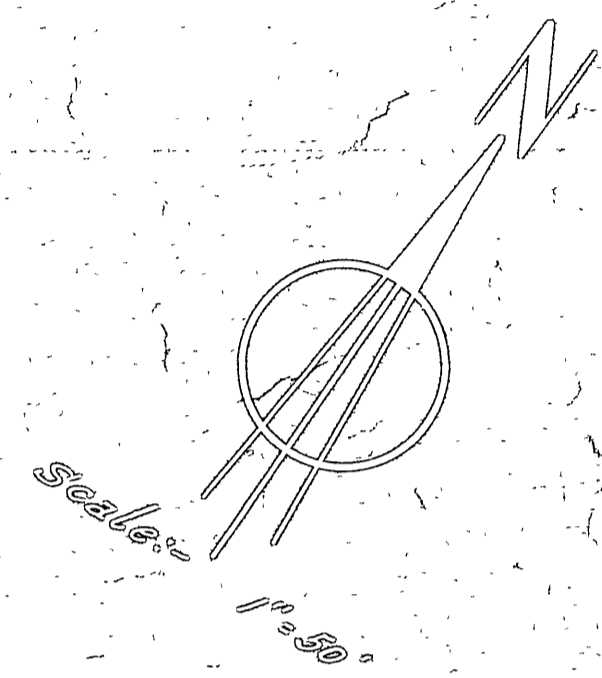
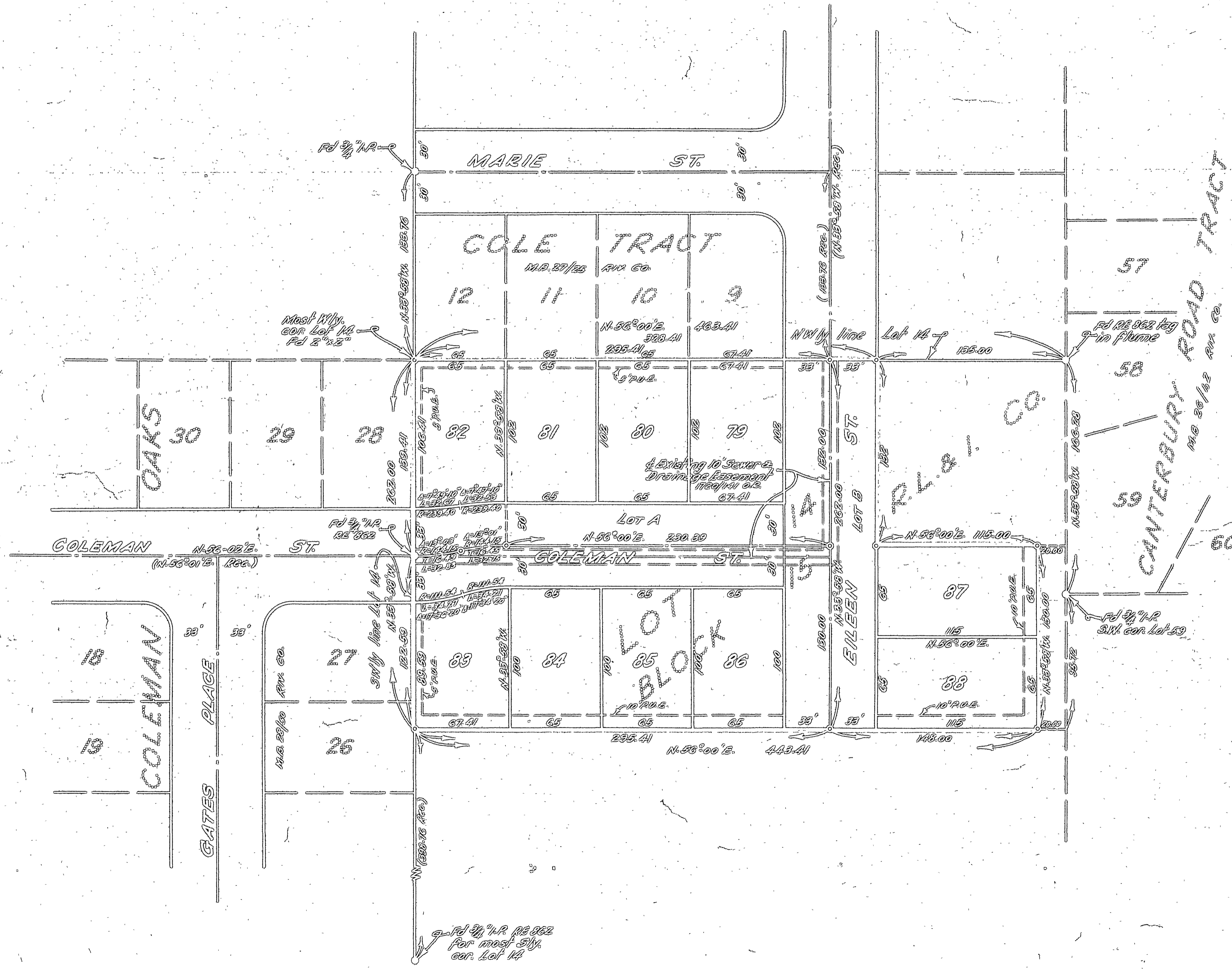
W. G. Waite
City Clerk of the City of
Riverside, California

OAK MANOR NO. 6

MB 34/91

34/91

24/92



ENGINEER'S NOTES:-
 Basis of Bearings is the South line of the COLE TRACT, taken as N 56° 00' E, as same is shown on map of COLE TRACT recorded in Book 27 of Maps at page 25 thereof, records of Riverside County, California.
 Found monuments as noted at all points shown thus ○
 Set 3/4" I.P. tagged R.E. 9876 at all points shown thus ○ unless otherwise noted.
 Set 2"x2" Redwood stakes tagged R.E. 9876 at all lot corners unless otherwise noted.

— BY —
 ALBERT A. WEBB ASSOCIATES
 CIVIL ENGINEERS
 FEBRUARY 1958