

0161

1910

35/3
M.B. 35/3
VICTORIA GROVES #8

IN THE CITY OF RIVERSIDE VICTORIA GROVES

UNIT NO. 8

BEING A SUBDIVISION OF A PORTION OF LOTS 16 AND 17, VICTORIA RANCH,
AS RECORDED IN MAP BOOK 4, PAGE 59, RECORDS OF RIVERSIDE COUNTY,
CALIFORNIA

JANUARY, 1956

SCALE 1" = 100'

J. F. DAVIDSON, C. E.

SHEET 1 OF 2 SHEETS

FILED
On May 6 1958

At 2:10 P.M.
Jack A. Ross
County Recorder
By O.A. Wheat
Deputy
Fee \$7.00
No. 8281
Filed By County Clerk

CITY PLANNING COMMISSION

I hereby certify that this map is as approved by the Riverside City Planning Commission at its meeting held on the 9th day of January 1956.
R. James Fairman
Planning Director City of Riverside

CIVIL ENGINEER'S CERTIFICATE

I hereby certify that I am a registered Civil Engineer of the State of California and that this map consisting of two (2) sheets correctly represents a survey made under my supervision during MARCH 1958; that all monuments shown hereon actually exist and their positions are correctly shown.
J. F. Davidson
Registered Civil Engineer No. 862

SUPERINTENDENT OF LIGHT AND WATER DEPARTMENT

I hereby certify that the subdivider named on this map has deposited with the Water Department of the City of Riverside sufficient funds to cover the cost of installing all necessary fire hydrants together with all water mains and laterals to the curb line on all streets shown on said map; that all P.U.E. shown on this map are sufficient for all requirements of the Electric Light and Water Departments of the City of Riverside and for the Department of Public Utilities of said City.
Dated this 21st day of April 1958.
A. J. Kennedy
Superintendent of Light and Water Dept., City of Riverside, Calif.

CITY TREASURER'S CERTIFICATE

I hereby certify that according to the records of this office as of this date, the property shown on this map is not subject to any special assessments, bonds and/or liens which have not been paid in full.
This certificate does not include any special assessments the bonds of which have not become a lien upon said property.
Dated this 22nd day of April 1958
By G. S. Wright
City Treasurer

DIRECTOR OF PUBLIC WORKS CERTIFICATE

I hereby certify that I have examined the within map; that the subdivision shown hereon is substantially the same as it appeared on the tentative map and any approved alterations thereof; that all provisions of Chapter 128 (Subdivision Map Act) Statutes of California 1943, and of Ordinance No. 1328 of the City of Riverside, California, and all amendments thereto have been complied with; that plans and specifications for drains, drainage, sewer and drainage works sufficient to protect all lots in said subdivision from flood or overflow have been approved by me; that all easements for sewers shown on said map are correct in form and contents and are approved; and I am satisfied that this map is technically correct.
Dated this 25th day of April 1958.
J. M. Matlock
DIRECTOR OF PUBLIC WORKS

COUNTY TAX COLLECTOR'S CERTIFICATE

I hereby certify that according to the records of this office as of this date, there are no liens against the property shown on the within map for unpaid State, County or local taxes or special assessments collected as taxes except taxes or special assessments now a lien but not yet payable, which are estimated to be \$4,200.00.
Dated this 2nd day of April 1958.
R. H. Strade
COUNTY TAX COLLECTOR
Deputy

STREET SUPERINTENDENT'S CERTIFICATE

I hereby certify that according to the records of this office, the property shown on this map is not subject to any special assessments which have not been paid in full.
Dated this 2nd day of April 1958.
Orval Addington
Street Superintendent

TAX BOND

I hereby certify that a bond in the sum of \$1,200.00 has been executed and filed with the Board of Supervisors of the County of Riverside, State of California conditioned upon the payment of all taxes, State, County, Municipal or local and all special assessments collected as taxes which at the time of filing of the annexed map with the County Recorder are a lien against said property but not yet payable and said bond has been duly approved by said Board of Supervisors.
Dated this 5th day of May 1958
GORDON A. PEQUEGNAT
County Clerk and ex-officio
Clerk of the Board of Supervisors
By Madelle Bann
Deputy

OWNER'S CERTIFICATE

We hereby certify that we are the owners of or have some right, title or interest in the land included in the subdivision shown on the annexed map consisting of two (2) sheets; that we are the only persons whose consent is necessary to pass a clear title to said land and we hereby consent to the making of said map and subdivision as shown within the colored border lines and we hereby offer for dedication for public use, lots "A" to "D" inclusive for street purposes and for the construction and maintenance of all public utilities, the five & ten foot easements shown by dashed lines and designated as "5' P.U.E." & "10' P.U.E."
SUNGOLD, INC., a corporation
By R. H. Walter President By J. Simpson Secretary

NOTARY ACKNOWLEDGEMENT

STATE OF CALIFORNIA } S.S.
COUNTY OF RIVERSIDE }
On this 17th day of MARCH 1958, before me, SHIRLEY A. BRANDES a Notary Public in and for said County and State, personally appeared R. H. WALTER known to me to be the President, and J. L. SIMPSON known to me to be the Secretary of the corporation that executed the within instrument and known to me to be the persons who executed the within instrument on behalf of the corporation therein named, and acknowledged to me that such corporation executed the same, and acknowledged to me that such corporation executed the within instrument pursuant to its by-laws or a resolution of its board of directors.
WITNESS my hand and official seal.
Shirley A. Brandes
Notary Public in and for said County and State.
My Commission Expires JAN. 20, 1959

CITY CLERK'S CERTIFICATE

I, W. G. Waite, City Clerk of the City of Riverside, California, hereby certify that an undertaking satisfactory to the Council of said City guaranteeing the construction of required street improvements in this subdivision was approved and filed in my office prior to the final acceptance of this subdivision map.
IN WITNESS WHEREOF, I have hereunto set my hand and affixed the official seal of the City of Riverside, State of California, this 27th day of April, 1958.
W. G. Waite
City Clerk of the City of Riverside, California.

RESOLVED

That this map consisting of two (2) sheets be, and the same is hereby accepted as the official map of "VICTORIA GROVES NO. 8" and the streets and easements are accepted as public streets and easements and the City Clerk is hereby authorized and directed to attest said map by signing his name thereto as City Clerk of the City of Riverside, State of California, and to affix the official seal of said City thereto.
I hereby certify that the foregoing resolution was adopted by the Mayor and Council of the City of Riverside this 27th day of April, 1958.
W. G. Waite
City Clerk of the City of Riverside, California.

35/3

VICTORIA GROVES #8

M.B. 35/3

0161

1910

257/4

VICTORIA GROVES

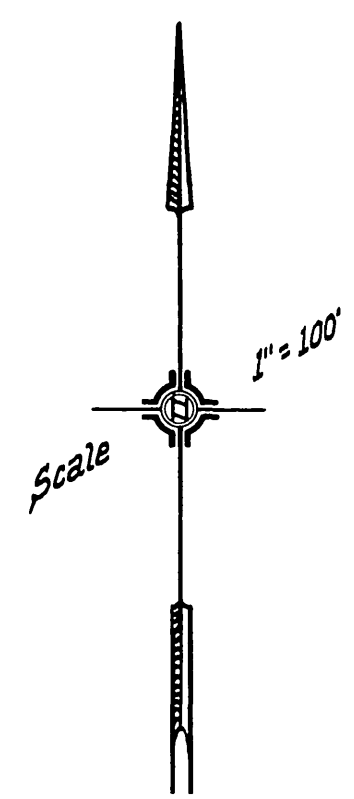
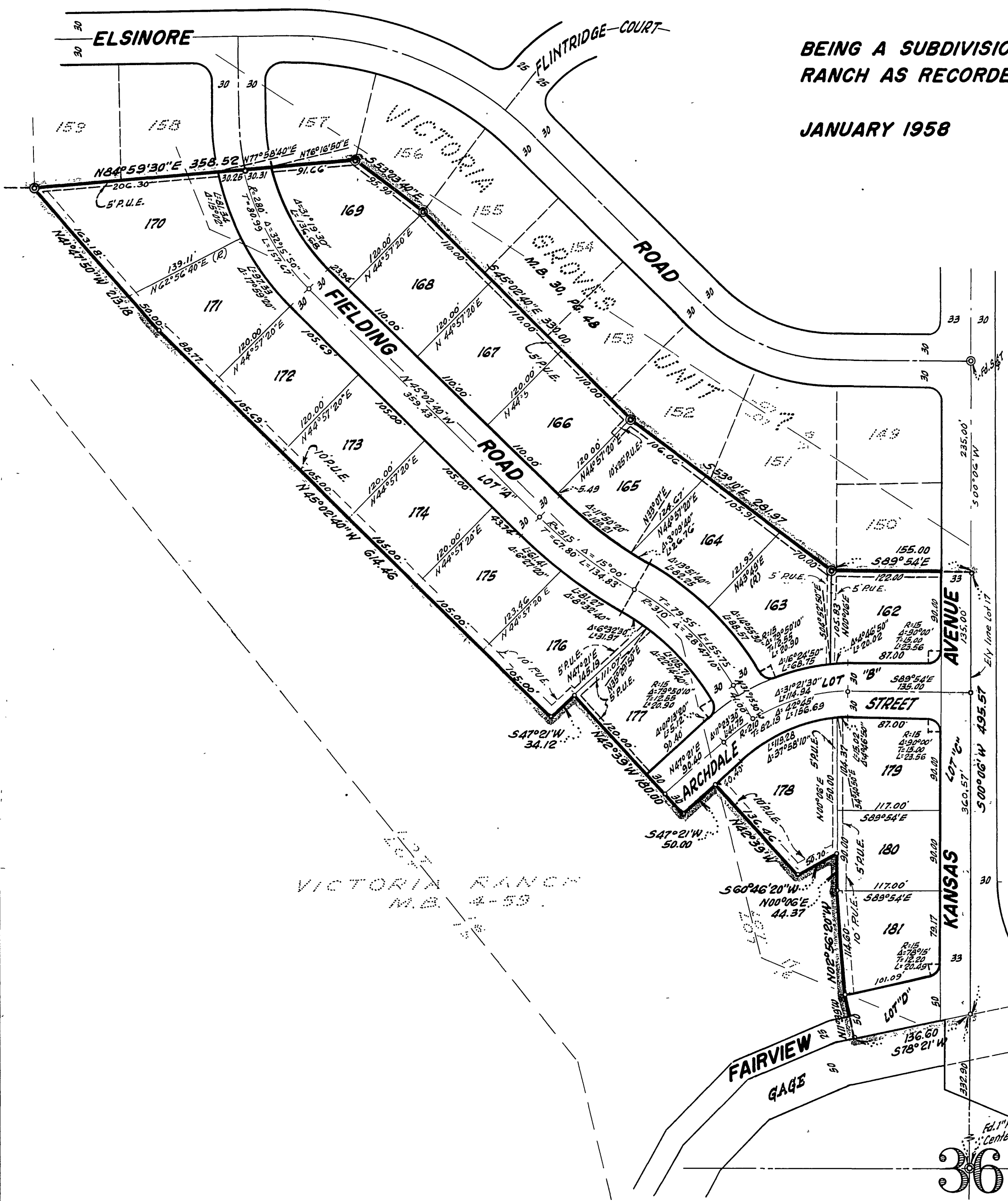
UNIT NO. 8

BEING A SUBDIVISION OF A PORTION OF LOTS 16 AND 17 OF VICTORIA RANCH AS RECORDED IN MAP BOOK 4, PAGE 59, RECORDS OF RIVERSIDE COUNTY, CALIFORNIA.

JANUARY 1958

J. F. DAVIDSON,
Civil Engineer

SCALE 1"=100'



ENGINEER'S NOTE

Bearings are based on the center line of KANSAS AVENUE, being $S 00^{\circ} 06' 10'' W$ as shown on map of VICTORIA GROVES UNIT NO. 7, Map Book 30, Page 49, Records of Riverside County, California.

- ⊙ indicates 3/4" Pipe Found unless noted otherwise.
- indicates 3/4" Pipe, tagged R.E. 662, Set.

2" x 2" Redwood Stakes, painted white and tagged R.E. 662, set at all lot corners.

36