

Morton Manor No. 2  
M.B. 35/39

# IN THE CITY OF RIVERSIDE, CALIFORNIA

## MORTON MANOR

### UNIT NO. 2

BEING A SUBDIVISION OF PORTIONS OF LOTS 11 & 12  
OF BLOCK 21 OF THE R.L. & I. CO. LANDS AS SHOWN ON A  
MAP FILED IN BOOK 1 AT PAGE 70 - RECORDS OF S.B. CO. CALIF.

APRIL 1958 —RIVERSIDE ENGINEERING CO INC— SCALE 1" = 100'

Sheet 1 of 2 Sheets

**FILED**

On July 29 1958  
At 2:20 PM  
Jack A. Ross  
By Jack A. Ross  
Fee \$7.00  
No 54304  
Filed by County Clerk

#### CITY PLANNING COMMISSION

I hereby certify that this map is as approved by the Riverside City Planning Commission at its meeting held on the 3<sup>rd</sup> day of February 1958.

R. James Fairman  
Planning Director - City of Riverside

#### CIVIL ENGINEER'S CERTIFICATE

I hereby certify that I am a Registered Civil Engineer of the State of California and that this map consisting of 2 sheets, correctly represents a survey made under my supervision during APRIL 1958, that all monuments shown hereon actually exist and their positions are correctly shown.

George O. Crawley  
Registered Civil Engineer No 9455

#### SUPERINTENDENT OF LIGHT AND WATER DEPARTMENT

I hereby certify that the subdivider named on this map has deposited with the water Department of the City of Riverside sufficient funds to cover the cost of installing all necessary fire hydrants together with all water mains and laterals to the curb line on all streets shown on said map, that all PUE shown on this map are sufficient for all requirements of the Electric Light and Water Departments of the City of Riverside and for the Department of Public Utilities of said City.

Dated this 15<sup>th</sup> day of July 1958.  
F. C. Ross by Don Campbell  
Superintendent of Light and Water Dept, City of Riverside, Calif

#### CITY TREASURER'S CERTIFICATE

I hereby certify that according to the records of this office as of this date, the property shown on this map is not subject to any special assessments, bonds and/or liens which have not been paid in full. This certificate does not include any special assessments the bonds of which have not become a lien upon said property.

Dated this 2<sup>nd</sup> day of July 1958.  
CITY TREASURER  
John Wright

#### RESOLVED

That this map consisting of 2 sheets be, and the same is hereby accepted as the official map of Morton Manor Unit No. 2 and the streets and easements are accepted as public streets and easements and the City Clerk is hereby authorized and directed to attest said map by signing his name thereto as City Clerk of the City of Riverside State of California and to affix the official seal of said City thereto.

I hereby certify that the foregoing resolution was adopted by the Mayor and Council of the City of Riverside this 22<sup>nd</sup> day of July 1958.  
Virginia J. Strohecker  
City Clerk of the City of Riverside, California

#### DIRECTOR OF PUBLIC WORKS CERTIFICATE

I hereby certify that I have examined the within map, that the subdivision shown thereon is substantially the same as it appeared on the tentative map and any approved alterations thereof, that all provisions of Chapter 128 (Subdivision Map Act) Statutes of California 1949, and of Ordinance No 1928 of the City of Riverside, California and all amendments thereto have been complied with, that plans and specifications for drains, drainage, sewer and drainage works sufficient to protect all lots in said subdivision from flood or overflow have been approved by me, that all easements for sewers shown on said map are correct in form and contents and are approved, and I am satisfied that this map is technically correct.

Dated this 21 day of July 1958.  
DIRECTOR OF PUBLIC WORKS  
John M. Bauer

#### COUNTY TAX COLLECTOR'S CERTIFICATE

I hereby certify that according to the records of this office as of this date, there are no liens against the property shown on the within map for unpaid State, County or local taxes or special assessments collected as taxes, except taxes or special assessments now a lien but not yet payable, which are estimated to be \$1000.00.

Dated this 8 day of July 1958.  
COUNTY TAX COLLECTOR  
W. H. Stode Deputy

#### STREET SUPERINTENDENT'S CERTIFICATE

I hereby certify that according to the records of this office, the property shown on this map is not subject to any special assessments which have not been paid in full.

Dated this 9<sup>th</sup> day of July 1958.  
R. M. Brown  
Street Superintendent

#### TAX BOND

I hereby certify that a bond in the sum of \$1000.00 has been executed and filed with the Board of Supervisors of the County of Riverside, State of California conditioned upon the payment of all taxes, State, County, Municipal or local and all special assessments collected as taxes which at the time of filing of the annexed map with the County Recorder are a lien against said property, but not yet payable and said bond has been duly approved by said Board of Supervisors.

Dated this 28<sup>th</sup> day of July 1958.  
GORDON A. PEQUEGNAT  
County Clerk and ex-officio  
Clerk of the Board of Supervisors  
By M. Bauer Deputy

#### CITY CLERK'S CERTIFICATE

I, Virginia J. Strohecker, City Clerk of the City of Riverside, California hereby certify that on under taking satisfactory to the Council of said City guaranteeing the construction of required street improvements in this subdivision was approved and filed in my office prior to the final acceptance of this subdivision map.

IN WITNESS WHEREOF I have hereunto set my hand and affixed the official seal of the City of Riverside, State of California, this 22<sup>nd</sup> day of July 1958.  
Virginia J. Strohecker  
City Clerk of the City of Riverside, California

#### OWNERS CERTIFICATE

We hereby certify that we are the owners of, or have some right, title or interest in the land included within the subdivision shown hereon, that we are the only persons whose consent is necessary to pass a clear title to said land, that we hereby consent to the making and filing of said subdivision map as shown within the blue border lines and we hereby offer for dedication to public use for street purposes, lots "A" to "B" inclusive and for construction and maintenance of public utilities, the 5' and 10' wide public utility easements shown by dashed lines and designated 5'(or 10') PUE.

SUNSHINE ACRES, CORP.  
Harry S. Coonen Pres. Sidney Weinberg Treas.

State of California } ss  
County of RIVERSIDE }  
On this 15<sup>th</sup> day of JULY 1958, before me DOROTHY MERRITT  
a Notary Public in and for the County of RIVERSIDE, state of California, personally  
appeared HARRY S. COONEN and SIDNEY WEINBERG  
known to me to be the PRESIDENT and TREASURER respectively, of the Corporation  
that executed the within instrument known to me to be the persons who executed the  
same on behalf of the Corporation therein named, and acknowledged to me that  
such Corporation executed the same.  
WITNESS my hand and official seal  
Dorothy Merritt  
Notary Public in and for the County of RIVERSIDE

All oil, gas hydrocarbon substances and other minerals in or under the land involved in this Subdivision map have been reserved to Morton and Morton, a corp, Hilson Developments Inc a corp and Burke Appel Company Inc, a corp in Deed to Sidney Weinberg and Harry S Coonen filed June 16, 1958 as Inst No 42620

MORTON MANOR NO. 2  
M.B. 35/39

35/39

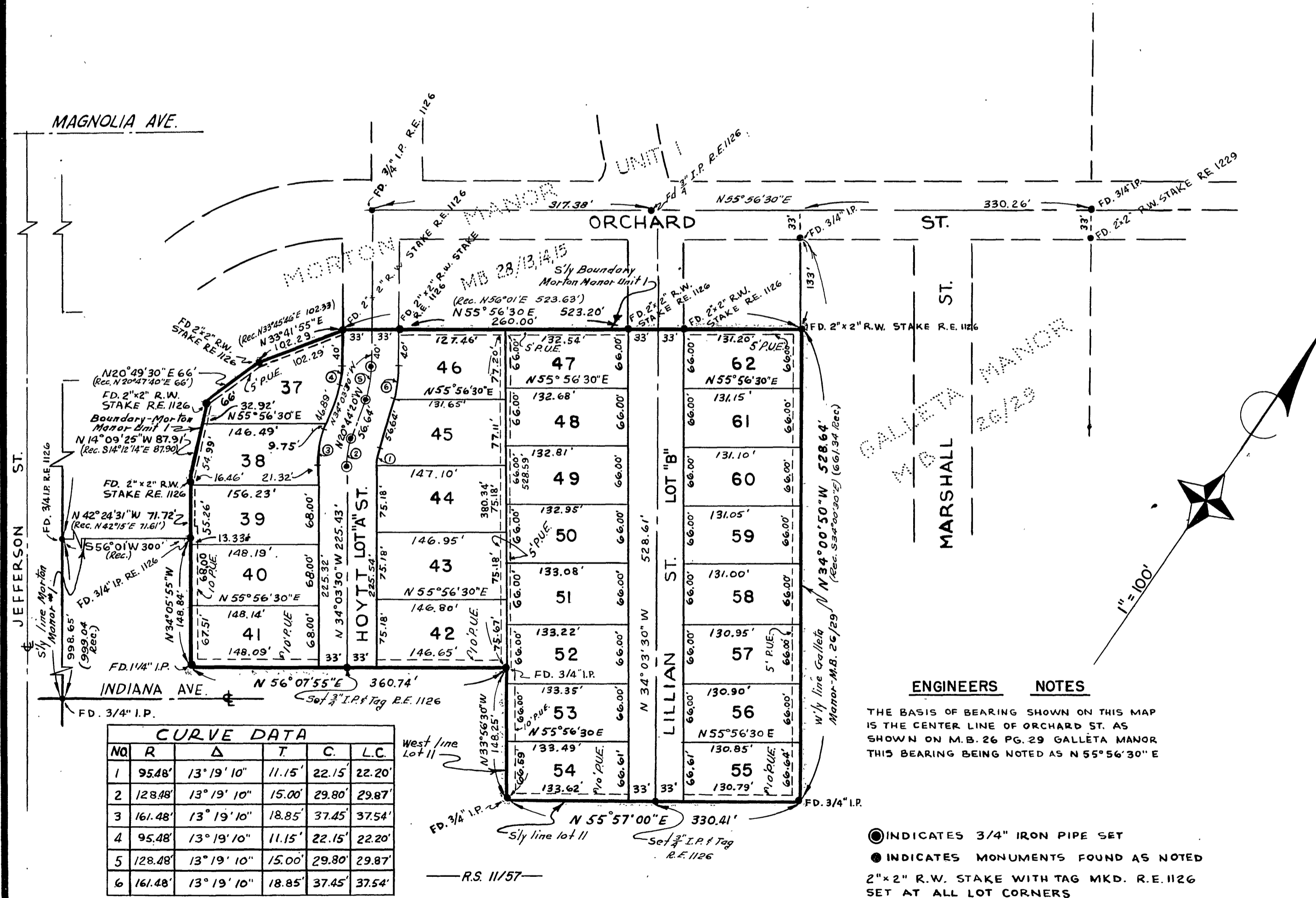
# IN THE CITY OF RIVERSIDE, CALIFORNIA

## MORTON MANOR

### UNIT NO. 2

BEING A SUBDIVISION OF PORTIONS OF LOTS 11 & 12  
OF BLOCK 21 OF THE R.L. & I. CO. LANDS AS SHOWN ON  
MAP FILED IN BOOK 1 AT PAGE 70 - RECORDS OF S.B. CO. CALIF.

APRIL 1958      RIVERSIDE ENGINEERING CO. INC.      SCALE: 1" = 100'



CURVE DATA					
NO.	R	Δ	T	C	L.C.
1	95.48'	13° 19' 10"	11.15'	22.15'	22.20'
2	128.48'	13° 19' 10"	15.00'	29.80'	29.87'
3	161.48'	13° 19' 10"	18.85'	37.45'	37.54'
4	95.48'	13° 19' 10"	11.15'	22.15'	22.20'
5	128.48'	13° 19' 10"	15.00'	29.80'	29.87'
6	161.48'	13° 19' 10"	18.85'	37.45'	37.54'

#### ENGINEERS NOTES

THE BASIS OF BEARING SHOWN ON THIS MAP IS THE CENTER LINE OF ORCHARD ST. AS SHOWN ON M.B. 26 PG. 29 GALLETA MANOR THIS BEARING BEING NOTED AS N 55° 56' 30" E

- ⊙ INDICATES 3/4" IRON PIPE SET
- INDICATES MONUMENTS FOUND AS NOTED
- 2" x 2" R.W. STAKE WITH TAG MKD. R.E. 1126 SET AT ALL LOT CORNERS