

# IN THE CITY OF RIVERSIDE HALECREST HOMES UNIT 1

Being A Subdivision of Portions of Lots 3,4,5,6, BLK 7, R.L. & Co  
Lands as shown on M.B. 1 Pg. 70 Records of San Bernardino  
County, Calif.

June 1958 Scale 1"=100'  
— Riverside Engineering Company Inc.—

Sheet 1 of 2 Sheets

FILED  
Aug 12, 58

Jack A. Ross  
County Recorder  
By O. A. Pequegnat  
Deputy  
Fee \$ 7.00  
Filed at 1:30 P.M.  
By County Clerk.

HALECREST HOME  
M.B. 35/47

### CITY PLANNING COMMISSION

I hereby certify that this map is as approved by the Riverside City Planning Commission at its meeting held on the 30<sup>th</sup> day of July 1958

James Harman  
Planning Director - City of Riverside

### CIVIL ENGINEER'S CERTIFICATE

I hereby certify that I am a Registered Civil Engineer of the State of California and that this map consisting of 2 sheets correctly represents a survey made under my supervision during January 1958; that all monuments shown hereon actually exist and their positions are correctly shown.

George O. Crawley  
Registered Civil Engineer No. 9455

### SUPERINTENDENT OF LIGHT AND WATER DEPARTMENT

I hereby certify that the subdivider named on this map has deposited with the Water Department of the City of Riverside sufficient funds to cover the cost of installing all necessary fire hydrants together with all water mains and laterals to the curb line on all streets shown on said map; that all P.U.E. shown on this map are sufficient for all requirements of the Electric, Light and Water Departments of the City of Riverside and for the Department of Public Utilities of said City.

Dated this 1<sup>st</sup> day of August 1958  
Everett C. Rose  
Superintendent of Light and Water Dept., City of Riverside, Calif.

### CITY TREASURER'S CERTIFICATE

I hereby certify that according to the records of this office as of this date, the property shown on this map is not subject to any special assessments, bonds and/or liens which have not been paid in full. This certificate does not include any special assessments the bonds of which have not become a lien upon said property.

Dated this 15<sup>th</sup> day of July 1958  
CITY TREASURER  
By: R. L. Wright

### RESOLVED

That this map consisting of 2 sheets be, and the same is hereby accepted as the official map of HALECREST HOMES, UNIT 1 and the streets and easements are accepted as public streets and easements and the City Clerk is hereby authorized and directed to attest said map by signing his name thereto as City Clerk of the City of Riverside, State of California and to affix the official seal of said City thereto.

I hereby certify that the foregoing resolution was adopted by the Mayor and Council of the City of Riverside this 7<sup>th</sup> day of August 1958  
Virginia J. Stroecken  
City Clerk of the City of Riverside, California

### DIRECTOR OF PUBLIC WORKS CERTIFICATE

I hereby certify that I have examined the within map that the subdivision shown thereon is substantially the same as it appeared on the tentative map and any approved alterations thereof, that all provisions of Chapter 12B (Subdivision Map Act) Statutes of California 1943, and of Ordinance No. 1328 of the City of Riverside, California and all amendments thereto have been complied with; that plans and specifications for drains, drainage, sewer and drainage works sufficient to protect all lots in said subdivision from flood or overflow have been approved by me; that all easements for sewers shown on said map are correct in form and contents and are approved; and I am satisfied that this map is technically correct.

Dated this 4<sup>th</sup> day of August 1958  
ACTING DIRECTOR OF PUBLIC WORKS  
Francis L. Tefels

### COUNTY TAX COLLECTOR'S CERTIFICATE

I hereby certify that according to the records of this office as of this date, there are no liens against the property shown on the within map for unpaid State, County or local taxes or special assessments collected as taxes, except taxes or special assessments now a lien but not yet payable, which are estimated to be \$ 1500.00

Dated this 17<sup>th</sup> day of July 1958  
COUNTY TAX COLLECTOR  
W. C. Strode Deputy

### STREET SUPERINTENDENT'S CERTIFICATE

I hereby certify that according to the records of this office, the property shown on this map is not subject to any special assessments which have not been paid in full.

Dated this 15<sup>th</sup> day of July 1958  
G. M. Bossi  
Street Superintendent

### TAX BOND

I hereby certify that a bond in the sum of \$ 1500.00 has been executed and filed with the Board of Supervisors of the County of Riverside, State of California conditioned upon the payment of all taxes, State, County, Municipal or local and all special assessments collected as taxes which at the time of filing of the annexed map with the County Recorder are a lien against said property but not yet payable and said bond has been duly approved by said Board of Supervisors.

Dated this 11<sup>th</sup> day of August 1958  
GORDON A. PEQUEGNAT  
County Clerk and ex-officio  
Clerk of the Board of Supervisors  
By: Madelle Bauer  
Deputy

### CITY CLERK'S CERTIFICATE

I, V. J. Stroecken, City Clerk of the City of Riverside California, hereby certify that an undertaking satisfactory to the Council of said City guaranteeing the construction of required street improvements in this subdivision was approved and filed in my office prior to the final acceptance of this subdivision map. IN WITNESS WHEREOF, I have hereunto set my hand and affixed the official seal of the City of Riverside, State of California, this 7<sup>th</sup> day of August 1958  
Virginia J. Stroecken  
City Clerk of the City of Riverside, California

### OWNER'S CERTIFICATE

We hereby certify that we are the owners of or have some right, title or interest in the land included in the subdivision on the annexed map consisting of two (2) sheets, that we are the only persons whose consent is necessary to pass a clear title to said land and we hereby offer for dedication for public use lots A to D inclusive for street purposes and for the construction and maintenance of all public utilities the five and ten foot easements shown by dashed lines and designated as "5' P.U.E." and "10' P.U.E.".  
HALECREST UNIT ONE, LTD., a limited partnership  
by Herman Hale Enterprises, Inc., a corporation, GENERAL PARTNER  
Herman M. Hale President; by Renee Chesley Secretary  
SECURITY TITLE INSURANCE COMPANY, a corporation  
by Robert E. Blau Vice Pres.; by Lois N. Wright Ass't. Sec'y.

State of California } s.s.  
County of Riverside }  
On this 1<sup>st</sup> day of August, 1958, before me HELEN E. SIMMONS a Notary Public in and for said county and state, personally appeared HERMAN M. HALE known to me to be the President and RENEE CHESLEY known to me to be the Secretary of Herman Hale Enterprises, Inc., the corporation that executed the within instrument and known to me to be the persons who executed the within instrument on behalf of said corporation, said corporation being known to me to be one of the partners of Halecrest Unit One, Ltd. the partnership that executed the within instrument, and acknowledged to me that such corporation executed the same as such partner and that such partnership executed the same.  
Helen E. Simmons  
Notary Public in and for said county and state  
My commission expires 3-22-60

State of California } s.s.  
County of Riverside }  
On this 2<sup>nd</sup> day of July, 1958, before me HELEN E. SIMMONS a Notary Public in and for said county and state, personally appeared ROBERT E. BLAU known to me to be the Vice President, and LOIS N. WRIGHT known to me to be the Assistant Secretary of the corporation that executed the within instrument, and known to me to be the persons who executed the within instrument on behalf of the corporation therein named, and acknowledged to me that such corporation executed the same, and acknowledged to me that such corporation executed the within instrument pursuant to its by-laws or a resolution of its board of directors.  
Witness my hand and official seal.  
Helen E. Simmons  
Notary Public in and for said County and State  
My commission expires 3-22-60

HALECREST HOMES NO. 1

M.B. 35/47

# HALECREST HOMES UNIT I

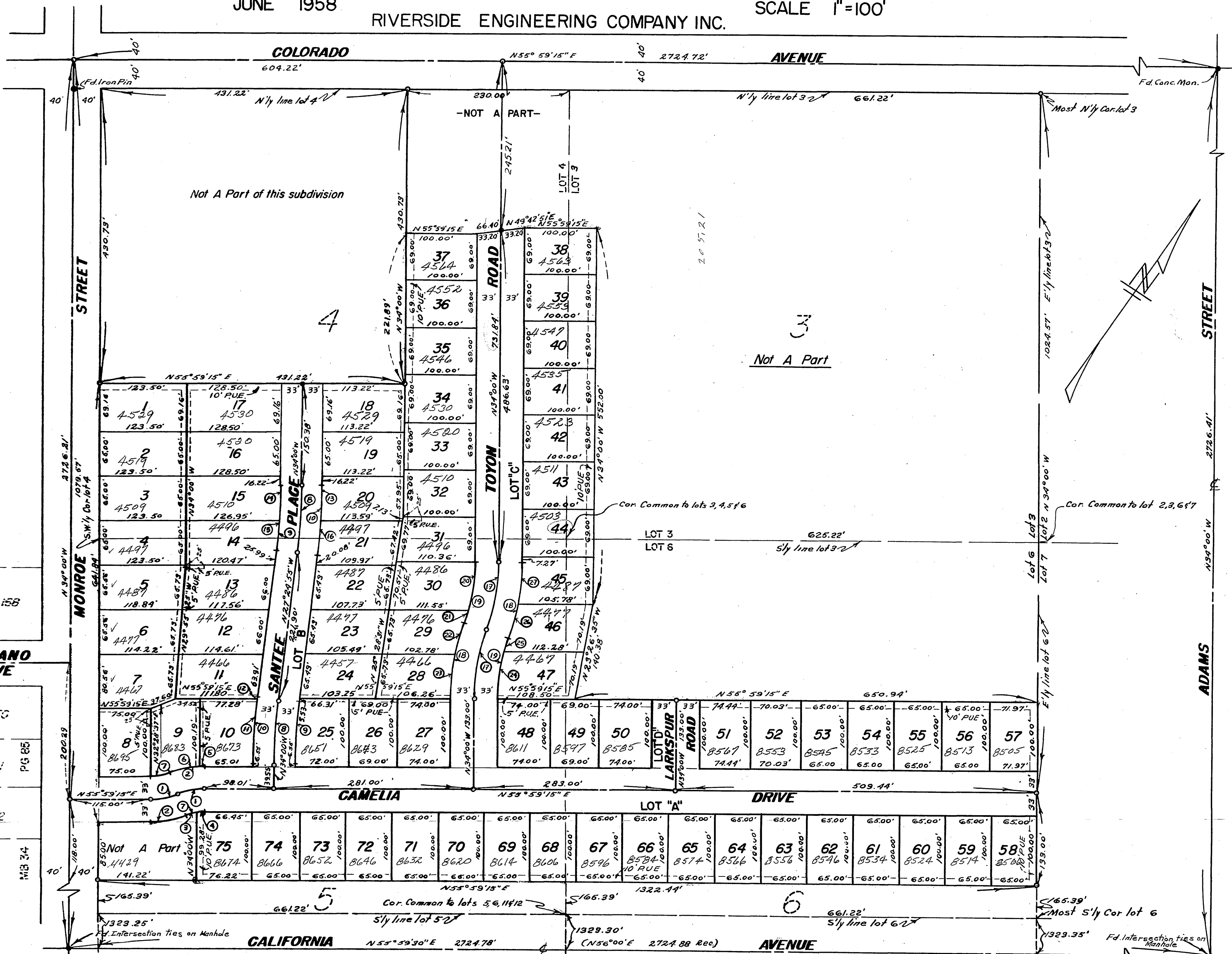
BEING A SUBDIVISION OF PORTIONS OF LOTS 3,4,5,6 BLK.7  
R.L. & I. CO. LANDS AS SHOWN ON MB. 1 P. 70 RECORDS OF  
SAN BERNARDINO COUNTY, CALIFORNIA

JUNE 1958

RIVERSIDE ENGINEERING COMPANY INC.

SCALE 1"=100'

CURVE DATA					
No.	R	Δ	L	T	Ch.
1	100'	22°19'54"	38.39'	19.74'	38.73'
2	133'	22°19'54"	51.84'	26.25'	51.51'
3	67'	13°56'31"	16.30'	8.19'	16.26'
4	67'	8°23'23"	9.81'	4.91'	9.80'
5	133'	3°00'47"	6.99'	3.50'	6.99'
6	133'	19°19'07"	44.84'	22.64'	44.63'
7	67'	22°19'54"	26.11'	13.22'	25.95'
8	800'	6°35'05"	91.94'	46.02'	91.89'
9	767'	6°35'05"	88.74'	44.12'	88.10'
10	833'	6°35'05"	95.73'	47.92'	95.68'
11	833'	6°26'29"	93.65'	46.87'	93.60'
12	833'	0°08'36"	2.08'	1.04'	2.08'
13	833'	3°21'26"	48.81'	24.41'	48.80'
14	767'	3°38'47"	48.81'	24.41'	48.80'
15	767'	2°56'18"	39.33'	19.67'	39.33'
16	833'	3°3'39"	46.92'	23.47'	46.91'
17	300'	19°26'39"	101.81'	51.40'	101.32'
18	333'	19°26'39"	113.01'	57.05'	112.47'
19	267'	19°26'39"	90.61'	45.74'	90.17'
20	267'	15°08'23"	70.55'	35.48'	70.35'
21	267'	4°18'16"	20.06'	10.03'	20.05'
22	333'	8°11'17"	47.59'	23.83'	47.55'
23	333'	11°15'22"	65.42'	32.82'	65.31'
24	267'	14°58'47"	69.81'	35.10'	69.61'
25	267'	4°27'52"	20.80'	10.41'	20.80'
26	333'	8°45'41"	50.92'	25.51'	50.87'
27	333'	10°30'56"	62.09'	31.13'	62.00'



### ENGINEERS NOTES

The Basis of bearings shown on this map is the  
E of Monroe Ave as shown on E/S 15 Page 29 Records  
of Riverside County, California. This bearing being noted  
as N 34°00' W

- PUE indicates Public Utility Easements
- Indicates Monuments Found
- Indicates 3/4" Iron pipe set.
- Set 2x2 Redwood stakes Tagged R.E. 9455  
at all lot corners unless otherwise shown.

### DELANO DRIVE

UNIT NO. 3 150

PG. 85

VILLA D'ESTE 152

MB 34

HALECREST HOMES NO. 1

M.B. 35/48

HALECREST HOMES  
M.B. 35/48