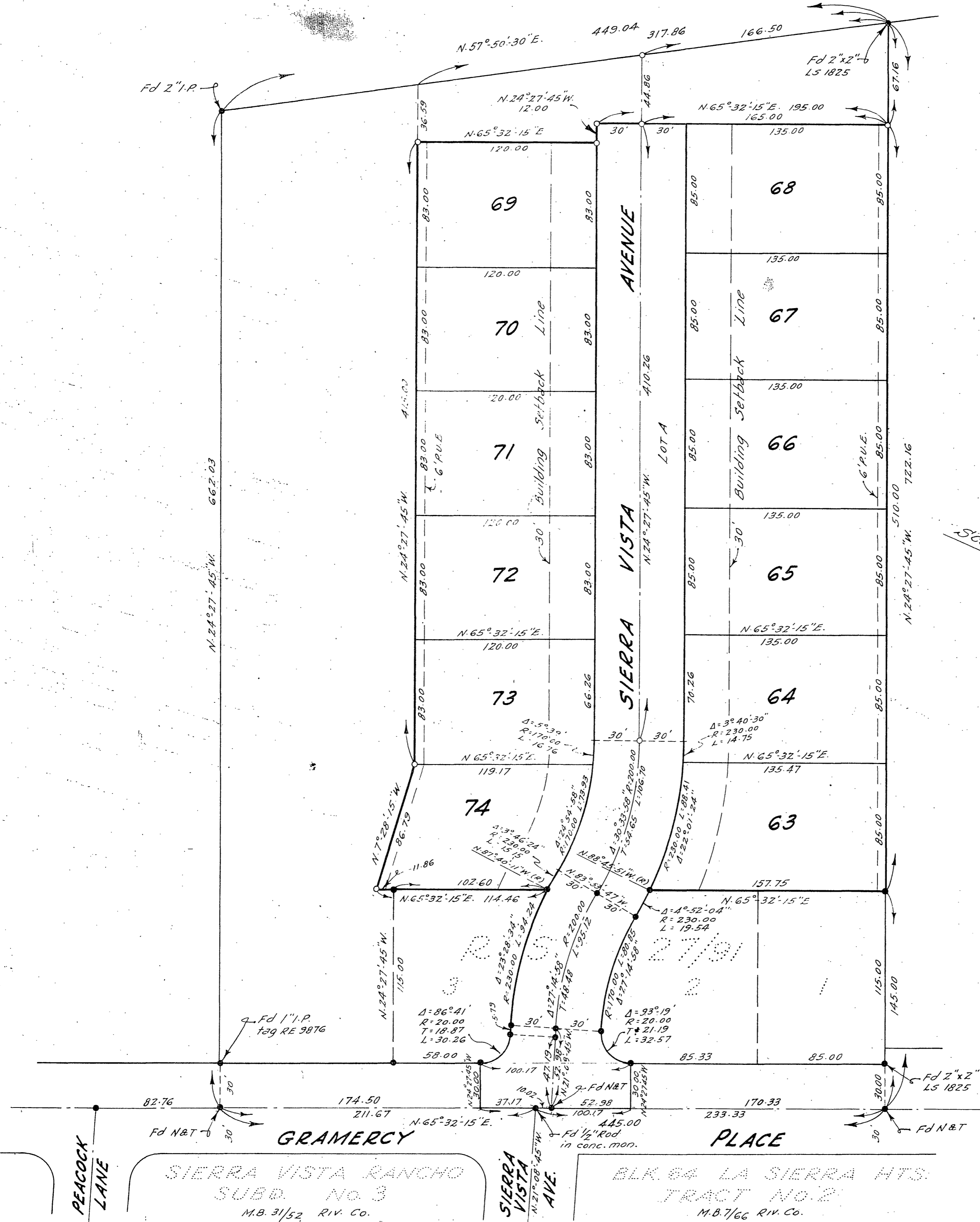


Being a subdivision of a portion of the
SW 1/4 of NW 1/4 and the NW 1/4 of SW 1/4 of Sec. 10,
T. 35., R. 6 W., S. B. B. & M.

MB 35/76



ENGINEER'S NOTES:-

Basis of Bearings is the centerline of GRAMERCY PLACE, taken as N. 65° 32' 15" E., as same is shown on map of SIERRA VISTA RANCHO SUBDIVISION UNIT No. 3 recorded in Book 31 of Maps at page 52 thereof, Records of Riverside County, California.

Found 3/4" Iron Pipe tagged R.E. 9876 at all points shown thus • unless otherwise noted.

Set 3/4" Iron Pipe tagged R.E. 9876 at all points shown thus o unless otherwise noted.

Set 2"x2" Redwood Stakes tagged R.E. 9876 at all lot corners unless otherwise noted.