

# IN THE CITY OF RIVERSIDE, CALIFORNIA MORTON MANOR UNIT NO. 3

BEING A SUBDIVISION OF A PORTION OF LOTS 3 & 6 OF BLOCK 21  
OF THE R.L.&I. CO. LANDS AS SHOWN ON A MAP FILED IN  
BOOK 1 AT PAGE 70—RECORDS OF SAN BERNARDINO CO. CALIF

SEPTEMBER 1958

—RIVERSIDE ENGINEERING CO. INC.—

SCALE 1"=100'

FILED

On Nov. 6 1958

At 2:30 P.M.

By Jack A. Ross

By O.A. Wright

Fee \$ 7.00

No.

By Security Title Insurance Co.

36/3  
Morton Manor

36/3

### CITY PLANNING COMMISSION

I hereby certify that this map is as approved by the Riverside City Planning Commission at its meeting held on the 9<sup>th</sup> day of October 1958

R. James Fairman  
Planning Director - City of Riverside

### CIVIL ENGINEER'S CERTIFICATE

I hereby certify that I am a Registered Civil Engineer of the State of California and that this map consisting of 2 sheets correctly represents a Survey made under my supervision during July 1958; that all monuments shown hereon actually exist and their position are correctly shown.

George O. Crawley  
Registered Civil Engineer No. 9455

### SUPERINTENDENT OF LIGHT AND WATER DEPARTMENT

I hereby certify that the subdivider named on this map has deposited with the Water Department of the City of Riverside sufficient funds to cover the cost of installing all necessary fire hydrants together with all water mains and laterals to the curb line on all streets shown on said map; that all P.U.E. shown on this map are sufficient for all requirements of the Electric Light and Water Department of the City of Riverside and for the Department of Public Utilities of said City.

Dated this 16 day of October 1958

Dwight A. Ross  
Superintendent of Light and Water Dept., City of Riverside, Calif

### CITY TREASURER'S

I hereby certify that according to the records of this office as of this date, the property shown on this map is not subject to any special assessments, bonds and/or liens which have not been paid in full.

This certificate does not include any special assessments the bonds of which have not become a lien upon said property.

Dated this 8<sup>th</sup> day of October 1958

CITY TREASURER

By J.C. Wright

### RESOLVED

That this map consisting of 2 sheets be, and the same is hereby accepted as the official map of Morton Manor Unit No. 3 and the streets and easements are accepted as public streets and easements and the City Clerk is hereby authorized and directed to attest said map by signing her name thereto as City Clerk of the City of Riverside, State of California and to affix the official seal of said City thereto.

I hereby certify that the foregoing resolution was adopted by the Mayor and Council of the City of Riverside this 5<sup>th</sup> day of November 1958

Virginia J. Strohecker  
City Clerk of the City of Riverside, California

### DIRECTOR OF PUBLIC WORKS CERTIFICATE

I hereby certify that I have examined the within map, that the subdivision shown thereon is substantially the same as it appeared on the tentative map and any approved alterations thereof, that all provisions of Chapter 128 (Subdivision Map Act) Statutes of California 1943, and of Ordinance No. 1328 of the City of Riverside, California and all amendments thereto have been complied with; that plans and specifications for drains, drainage, sewer and drainage works sufficient to protect all lots in said subdivision from flood or overflow have been approved by me; that all easements for sewers shown on said map are correct in form and contents and are approved; and I am satisfied that this map is technically correct.

Dated this 23 day of October 1958

Noting DIRECTOR OF PUBLIC WORKS

Francis L. Lafala

### COUNTY TAX COLLECTOR'S CERTIFICATE

I hereby certify that according to the records of this office as of this date there are no liens against the property shown on the within map for unpaid State, County or local taxes of special assessments collected as taxes, except taxes or special assessments now a lien but not yet payable, which are estimated to be 15.00

Dated this 29<sup>th</sup> day of Oct. 1958

V.M. HYDE  
COUNTY TAX COLLECTOR

By Meritt Deputy

### STREET SUPERINTENDENT'S CERTIFICATE

I hereby certify that according to the records of this office, the property shown on this map is not subject to any special assessments which have not been paid in full.

Dated this 3<sup>rd</sup> day of October 1958

W.M. Davis  
Street Superintendent

### TAX BOND

I hereby certify that a bond in the sum of \_\_\_\_\_ has been executed and filed with the Board of Supervisors of the County of Riverside, State of California conditioned upon the payment of all taxes, State, County, Municipal or local and all special assessments collected as taxes which at the time of filing of the annexed map with the County Recorder are a lien against said property but not yet payable and said bond has been duly approved by said Board of Supervisors.

Dated this \_\_\_\_\_ day of \_\_\_\_\_ 195\_\_\_\_\_

GORDON A. PEQUEGNAT  
County Clerk and ex officio  
Clerk of the Board of Supervisors

By \_\_\_\_\_ Deputy

### CITY CLERK'S CERTIFICATE

I, Virginia J. Strohecker, City Clerk of the City of Riverside, California, hereby certify that an undertaking satisfactory to the Council of said City guaranteeing the construction of required street improvements in this subdivision was approved and filed in my office prior to the final acceptance of this subdivision map.

IN WITNESS WHEREOF, I have hereunto set my hand and affixed the official seal of the City of Riverside, State of California, this 5<sup>th</sup> day of November 1958

Virginia J. Strohecker  
City Clerk of the City of Riverside, California

### OWNERS CERTIFICATE

We hereby certify that we are the owner, or have some right, title or interest in the land included within the subdivision shown on the within map consisting of 2 sheets that we are the only persons whose consent is necessary to pass a clear title to said land and we hereby consent to the making and recording of said map and subdivision as shown within the colored border line and we hereby offer for dedication to public use for street purposes Lots A to E inclusive and for the construction and maintenance of all public utilities, the five and ten foot easements shown by dashed lines and designated "5' P.U.E." and "10' P.U.E."

### SUNSHINE ACRES CORP.

By Harry S. Coonen Pres.

By Sidney Weinberg Treas.

### RESERVATION OF GAS AND OIL STATEMENT

All oil, gas, hydrocarbon substances and other minerals in or under the land involved in this subdivision map have been reserved to Morton & Morton, a Corp., Hilson Developments Inc. a Corp., and Burke Appel Company Inc., a Corp., in deed to Sidney Weinberg and Harry S. Coonen, filed June 16, 1958 as Inst. No. 42620.

### NOTARY ACKNOWLEDGEMENT

STATE OF CALIFORNIA } S.S.  
COUNTY OF RIVERSIDE }

On this 16 day of OCT 1958, before me DOROTHY MERRITT a Notary Public in and for said County and State, personally appeared HARRY S. COONEN known to me to be the President and SIDNEY WEINBERG, known to me to be the TREAS. Secretary of the corporation that executed the within instrument on behalf of the corporation therein named, and acknowledged to me that such corporation executed the same, and acknowledged to me that such corporation executed the within instrument pursuant to its by-laws or a resolution of its board of directors.

WITNESS my hand and Official seal.  
Dorothy Merritt  
Notary Public in and for said County and State

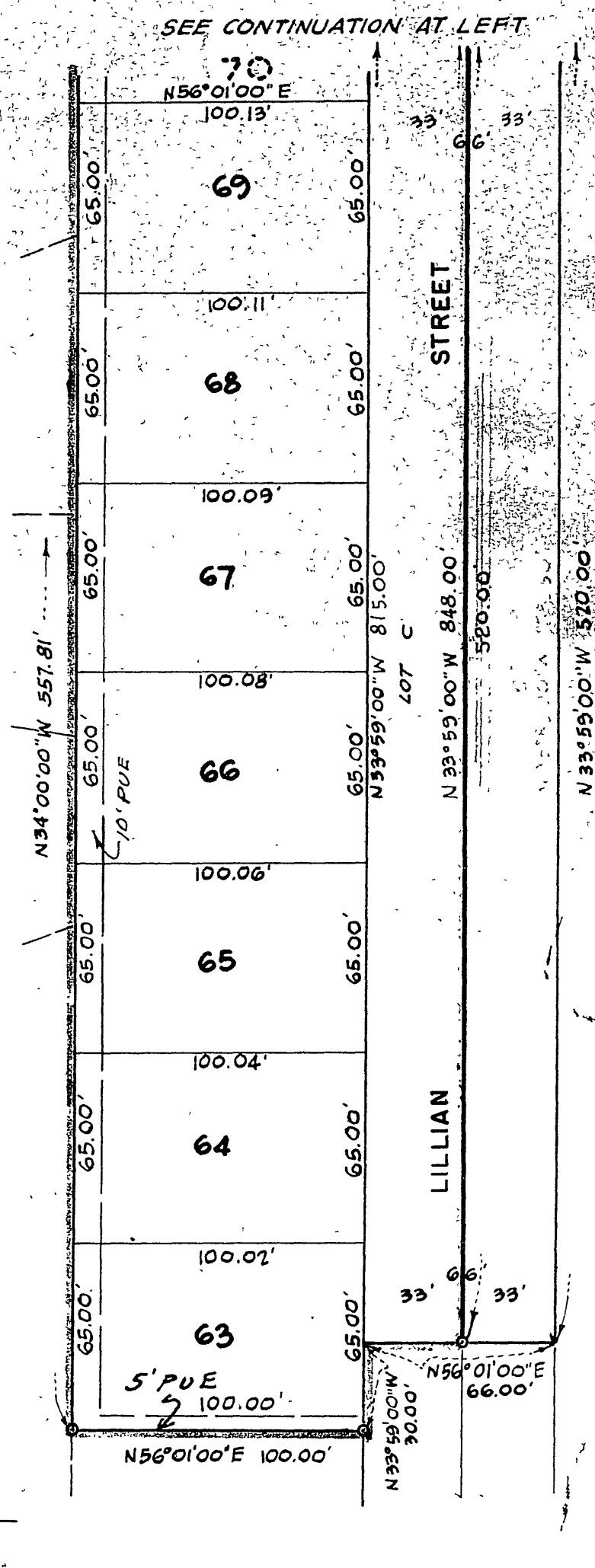
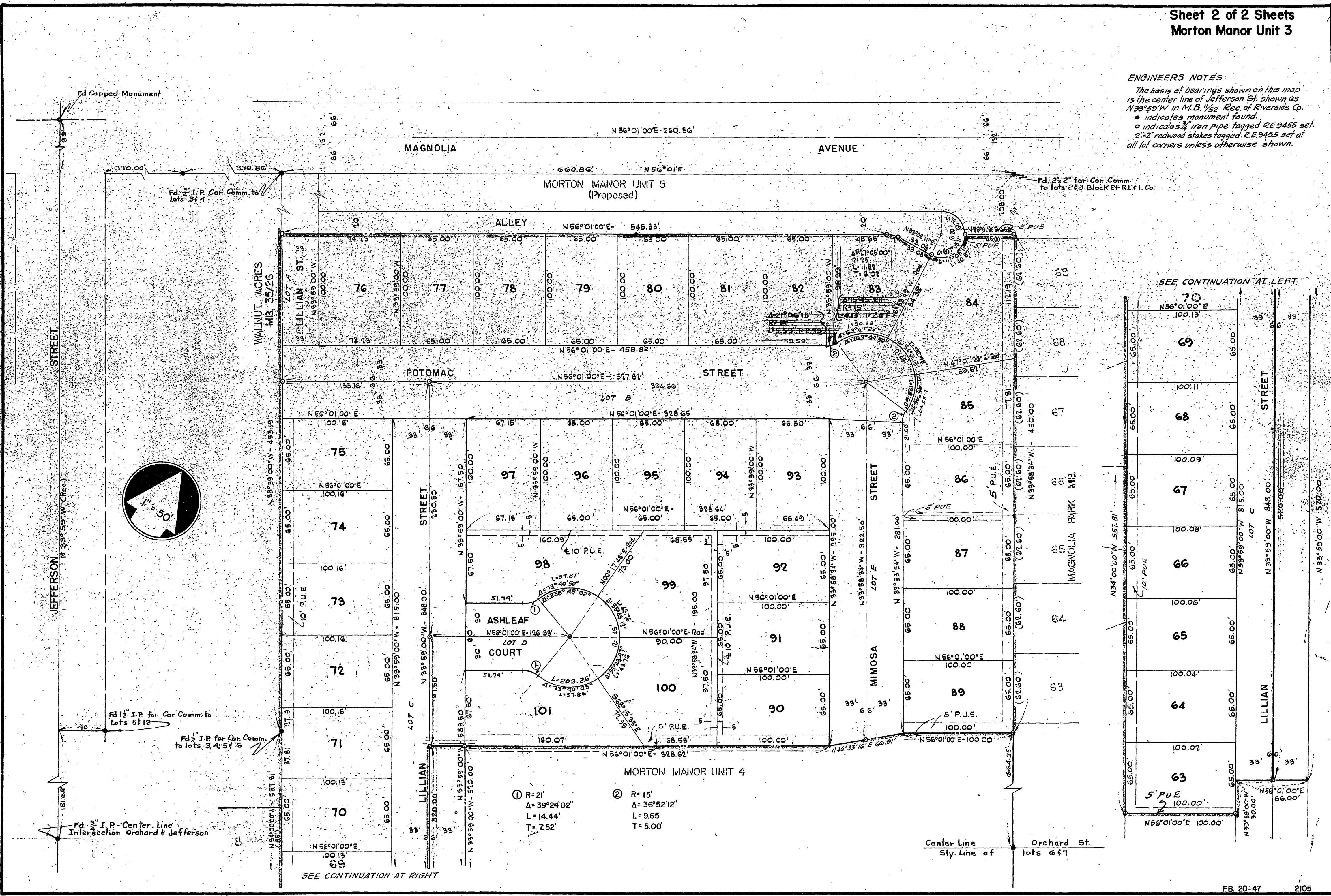
My Commission expires AUG 13 - 1961

MORTON MANOR NO. 3

M.B. 36/3

36/4

**ENGINEERS NOTES:**  
 The basis of bearings shown on this map is the center line of Jefferson St. shown as N33°59'W in M.B. 1152 Rec. of Riverside Co.  
 • indicates monument found.  
 • indicates 2" iron pipe tagged R.E.9455 set.  
 • 2" x 2" redwood stakes tagged R.E.9455 set at all lot corners unless otherwise shown.



- ① R=21'  
Δ=39°24'02"  
L=14.44'  
T=7.52'
- ② R=15'  
Δ=36°52'12"  
L=9.65'  
T=5.00'

Center Line  
Sly. Line of  
Orchard St.  
lots 6&7

SEE CONTINUATION AT RIGHT