

FILED
On Nov. 21 1958

At 4:30 P.M.
JACK A. ROSS
County Surveyor
By O. G. Heath
Deputy
Fee \$7.00
Filed By County Clerk.

IN THE COUNTY OF RIVERSIDE

CASTLE HOMES

BEING A SUBDIVISION OF A PORTION OF BLKS. 6 AND 7 AND LOT "E"
OF LA SIERRA HEIGHTS TRACT NO. 3, MAP BOOK 8, PAGE 27, RECORDS
OF RIVERSIDE COUNTY, CALIFORNIA.

OCTOBER 1958 J. F. DAVIDSON, C. E. SCALE 1"=100'

We hereby certify that we are the owners of or have some right, title or interest in the land included within the subdivision shown hereon, that we are the only persons whose consent is necessary for the making and recording of said map and subdivision as shown within the colored border line and we hereby offer for dedication for public use, Lots "A" to "F" inclusive for street purposes and for the construction and maintenance of all public utilities, the six foot easements, two foot easements, and two and one-half foot by twenty-five foot anchor easements shown by dashed lines and designated "G.P.U.E.", "2' P.U.E.", and "2.5' x 25' Anchor Easement."

VERNAL HOMES, INC., a Corporation
By Lofton H. Brooks President By Evelene Murray Secretary

STATE OF CALIFORNIA
COUNTY OF LOS ANGELES

On OCT. 23, 1958, before me, the undersigned, a Notary Public in and for said County and State, personally appeared Lofton H. Brooks, known to me to be the President, and Evelene Murray, known to me to be the Secretary of VERNAL HOMES, INC. the Corporation that executed the within instrument, known to me to be the persons who executed the within instrument, on behalf of the Corporation, therein named, and acknowledged to me that such Corporation, executed the within instrument pursuant to its by-laws or a resolution of its Board of Directors.

WITNESS my hand and official seal.

Bernice Powers
Notary Public in and for said County and State

My commission expires Aug 15, 1960

We hereby certify that we are the legal owners of, or have some right, title and interest in and to the land shown on the annexed map, by reason of being Trustee in that certain Deed of Trust recorded September 8, 1958 in Book 2329, page 390 of Official Records in the office of the Recorder of Riverside County, California, and we hereby consent to the making of said map and subdivision, and to the dedication of streets and easements shown thereon.

TITLE SERVICE COMPANY, a Corporation, Trustee
By D. J. Bacon VICE President By Paul E. Quinn ASSISTANT Secretary

STATE OF CALIFORNIA
COUNTY OF LOS ANGELES

On OCTOBER 23, 1958, before me, the undersigned, a Notary Public in and for said County and State, personally appeared D. J. Bacon, known to me to be the VICE President, and Paul E. Quinn, known to me to be the ASSISTANT Secretary of TITLE SERVICE COMPANY the Corporation that executed the within instrument, known to me to be the persons who executed the within instrument, on behalf of the Corporation, therein named, and acknowledged to me that such Corporation, executed the within instrument pursuant to its by-laws or a resolution of its Board of Directors.

WITNESS my hand and official seal.

Leon Trayer
Notary Public in and for said County and State

My commission expires MARCH 27, 1959

I hereby certify that I am a Registered Civil Engineer of the State of California and that this map consisting of two (2) sheets correctly represents a survey made under my supervision during October of 1958; that all monuments shown hereon actually exist and their positions are correctly shown.

J. F. Davidson
Registered Engineer No. 862

I hereby certify that a bond in the sum of \$_____ has been executed and filed with the Board of Supervisors of the County of Riverside, California, conditioned upon the payment of all taxes, State, County, Municipal or local and all special assessments collected as taxes which at the time of filing of the annexed map with the County Recorder are a lien against said property but not yet payable and said bond has been duly approved by said Board of Supervisors.

Dated _____, 1958.

G. A. PEQUEGNAT
County Clerk and ex-officio Clerk of the Board of Supervisors
By _____ Deputy

Approved by the Riverside County Planning Commission in accordance with requirements of law in a duly authorized meeting held 19TH DAY NOV., 1958.

Hazel G. Evenson Secretary
Riverside County Planning Commission

I hereby certify that according to the records of this office as of this date, there are no liens against the property shown on the within map for unpaid State, County or local taxes or special assessments collected as taxes

Dated this 30th day of October, 1958

V. M. HYDE
County Tax Collector
By Marie M. [Signature] Deputy

I hereby certify that I have examined the within annexed map; that the subdivision shown thereon is substantially the same as it appeared on the tentative map and any alterations thereof; that all provisions of Chapter 128 (Subdivision Map Act) Statutes of California, 1943, and Riverside County Ordinance No. 336 have been complied with and I am satisfied that this map is technically correct.

Dated Nov. 19, 1958.

A. C. KEITH
County Surveyor
By G. C. Keith

The County of Riverside, California, by and through its duly authorized officers hereby approves said final map and accepts the foregoing dedications, except Lots "A" and "B"

Dated NOV. 24TH, 1958.

County of Riverside, State of California
By [Signature]
Chairman of the Board of Supervisors

ATTEST:

G. A. PEQUEGNAT
County Clerk and ex-officio Clerk of the Board of Supervisors By C. Maurer Deputy

M.B. 36/17

M.B. 36/17

NOV MB 36/17

36/18

CASTLE HOMES

BEING A SUBDIVISION OF PORTIONS OF BLKS. 6 & 7 AND LOT "E" OF LA SIERRA HEIGHTS TRACT NO. 3, MAP BOOK 8, PAGE 27, RECORDS OF RIVERSIDE COUNTY, CALIFORNIA.

OCTOBER 1958

J. F. DAVIDSON, C. E.

SCALE 1"=100'



LA SIERRA HEIGHTS BLOCK

SIERRA

BLK. 46
TYLER
LINDA AVENUE

BLK. 45

BLK. 42

STREET

KIDD AVENUE

RELEASE

ACRES MB 15-20

ENGINEER'S NOTE

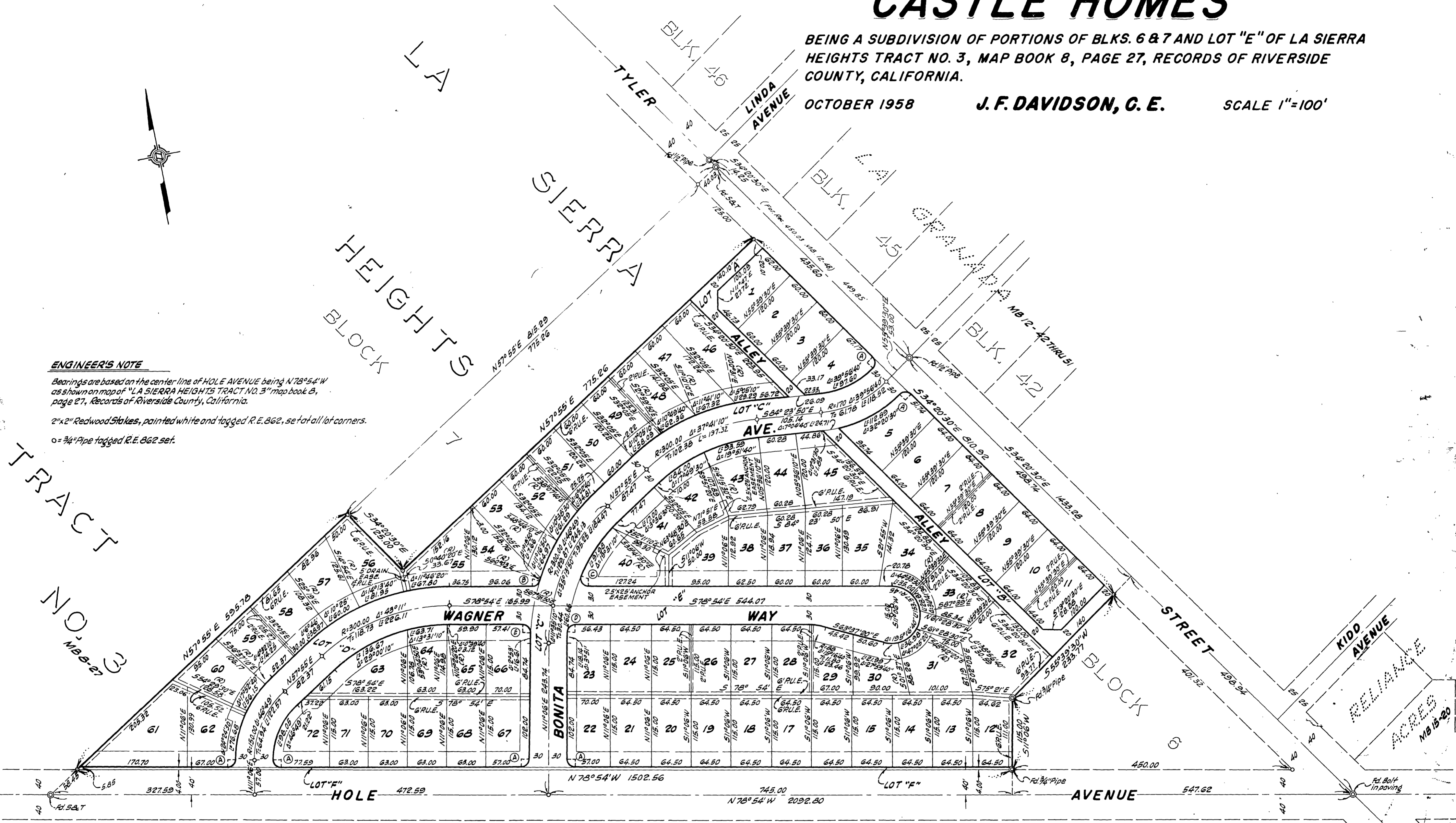
Bearings are based on the center line of HOLE AVENUE being N78°54'W as shown on map of "LA SIERRA HEIGHTS TRACT NO. 3" map book 8, page 27, Records of Riverside County, California.

2"x2" Redwood Stakes, painted white and tagged R.E. 862, set at all lot corners.

o = 3/4" Pipe tagged R.E. 862 set.

TRACT NO. 3 MB 8-27

M.B. 36/18



CURVE DATA				
	R	Δ	T	L
A	13.00	90°00'	13.00	20.42
B	13.00	72°28'50"	9.53	16.45
C	13.00	113°41'20"	19.90	25.80
D	13.00	86°09'	12.15	19.55
E	13.00	92°53'	13.67	21.07

MB 36/18