

FILED

On January 9, 1958

At 2:45 P.M.

Jack A. ...

By ...

Filed by Security Title Ins. Co.

IN THE CITY OF RIVERSIDE, CALIFORNIA

MORTON MANOR UNIT NO. 5

BEING A SUBDIVISION OF A PORTION OF LOT 3 OF BLOCK 21 OF THE R.L.&I. CO. LANDS AS SHOWN ON A MAP FILED IN BOOK 1 AT PAGE 70 - RECORDS OF SAN BERNARDINO CO. CALIF. JUNE 1958 - RIVERSIDE ENGINEERING CO. INC. - SCALE 1"=100'

NOTARY ACKNOWLEDGEMENT

STATE OF CALIFORNIA } ss. COUNTY OF LOS ANGELES } ss. On this 20 day of September, 1958, before me Sheldon G. Slater, Notary Public in and for said County and State, personally appeared ...

OWNERS CERTIFICATE

We hereby certify that we are the owners of or have some right, title or interest in the land included within the subdivision shown on this within map consisting of one sheet, that we are the only persons whose consent is necessary to pass a clear title to said land and we hereby consent to the making and recording of said map and subdivision as shown within the colored border line and we hereby offer for dedication to public use for street purposes lots A and B, for alley purposes lot C and for the construction and maintenance of public utilities the five feet easements shown by dashed lines and marked 'E' and 'U'.

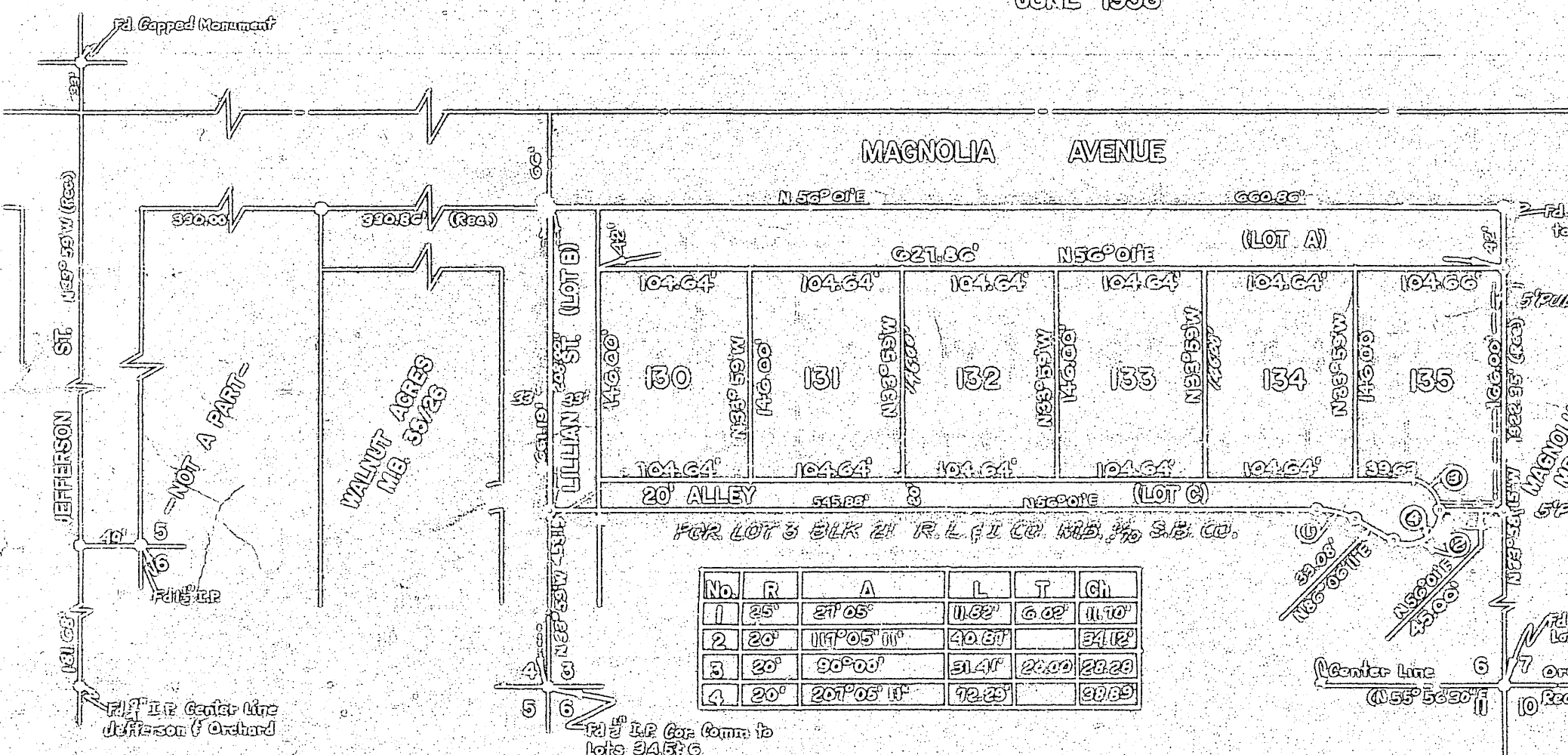
MORTON & MORTON a corporation by William Morton, President. BURKE-APPEL COMPANY, INC. a corporation by ... HILSON DEVELOPMENTS, INC. a corporation by ...

NOTARY ACKNOWLEDGEMENTS

STATE OF CALIFORNIA } ss. COUNTY OF LOS ANGELES } ss. On this 20 day of September, 1958, before me Sheldon G. Slater, Notary Public in and for said County and State, personally appeared ...

CITY CLERKS CERTIFICATE

I have reviewed the map of the City of Riverside, California, hereby certify that the same is in accordance with the provisions of the City Ordinance No. 100, and that the same is in accordance with the provisions of the City Ordinance No. 100, and that the same is in accordance with the provisions of the City Ordinance No. 100.



ENGINEERS NOTES

The basis of bearings shown on this map is the center line of Jefferson St shown as N 83° 58' 14" W 100.00' to Lot 249 (Rec. M.D. 2574). 0 indicates monument found. 1/2" indicates 1/2" iron pipe capped 12" deep set. 1/4" indicates 1/4" iron pipe capped 12" deep set. All lot corners unless otherwise shown.

DIRECTOR OF PUBLIC WORKS

I have carefully examined the within map and the subdivision thereon and find that the same is in accordance with the provisions of the City Ordinance No. 100, and that the same is in accordance with the provisions of the City Ordinance No. 100, and that the same is in accordance with the provisions of the City Ordinance No. 100.

CITY TREASURER'S CERTIFICATE

I have carefully examined the records of this office and find that the property shown on this map is not subject to any special assessments, taxes or liens which have not been paid in full. The only special assessments which have not been paid in full are the special assessments for streets, drainage, sewer and water, and the same are not shown on this map.

TAX BOND

I hereby certify that a bond in the amount of \$1000.00 has been executed and filed with the Board of Supervisors of the County of Riverside, California, and that the same is in accordance with the provisions of the City Ordinance No. 100, and that the same is in accordance with the provisions of the City Ordinance No. 100.

PLANNING COMMISSION CERTIFICATE

I hereby certify that this map was approved by the Planning Commission at its meeting held on the 22 day of September, 1958.

ENGINEERS CERTIFICATE

I hereby certify that I am a duly licensed Civil Engineer of the State of California and that the map consisting of one sheet currently in process is prepared under my supervision during July, 1958, and that all measurements shown thereon are correct and that the same are in accordance with the provisions of the City Ordinance No. 100.

SUPERINTENDENT OF LIGHT AND WATER DEPT.

I hereby certify that these lots shown on this map have been visited with the water department and that the same are in accordance with the provisions of the City Ordinance No. 100, and that the same are in accordance with the provisions of the City Ordinance No. 100.

COUNTY TAX COLLECTORS CERTIFICATE

I hereby certify that according to the records of this office, there are no liens against the property shown on this within map for unpaid State, County or local taxes or special assessments, or for unpaid assessments for streets, drainage, sewer and water, and that the same are in accordance with the provisions of the City Ordinance No. 100.