

IN THE CITY OF RIVERSIDE

VICTORIA GROVES

UNIT NO. 6

BEING A SUBDIVISION OF LOT 14 AND PORTS OF LOTS 9, 12, 13, 15, 16, 17 & 20 OF VICTORIA RANCH, MAP BOOK 4, PAGE 59, RECORDS OF RIVERSIDE COUNTY, CALIFORNIA. AND A PORTION OF ELSINORE ROAD VACATED.

APRIL 1959

J. F. DAVIDSON, C. E.

SCALE 1"=100'

SHEET 1 OF 2 SHEETS

FILED
On July 14 1959
At 3:40 P. M.
Jack A. Ross
County Recorder
By O. A. Heat
Deputy
Fee \$7.00
No. 6100

CITY PLANNING COMMISSION

I hereby certify that this map is as approved by the Riverside City Planning Commission at its meeting held on the 7th day of July, 1959.

R. J. Davidson
Planning Director, City of Riverside

CIVIL ENGINEER'S CERTIFICATE

I hereby certify that I am a registered Civil Engineer of the State of California and that this map consisting of two (2) sheets correctly represents a survey made under my supervision during April of 1959; that all monuments shown hereon actually exist and their positions are correctly shown.

J. F. Davidson
Registered Civil Engineer No. 862

SUPERINTENDENT OF LIGHT AND WATER DEPARTMENT

I hereby certify that the subdivider named on this map has deposited with the Water Department of the City of Riverside sufficient funds to cover the cost of installing all necessary fire hydrants together with all water mains and laterals to the curb line on all streets shown on said map; that all P.U.E. shown on this map are sufficient for all requirements of the Electric Light and Water Departments of the City of Riverside and for the Department of Public Utilities of said City.

Dated this 20th day of June, 1959.

R. J. Davidson
Superintendent of Light and Water Dept., City of Riverside, Calif.

CITY TREASURERS CERTIFICATE

I hereby certify that according to the records of this office as of this date, the property shown on this map is not subject to any special assessments, bonds and/or liens which have not been paid in full.

This certificate does not include any special assessments the bonds of which have not become a lien upon said property.

Dated this 24th day of June, 1959. City Treasurer

G. L. Wright

TAX BOND

I hereby certify that a bond in the sum of \$6000.00 has been executed and filed with the Board of Supervisors of the County of Riverside, California, conditioned upon the payment of all taxes, State, County, City or local and all special assessments collected as taxes which at the time of filing of this map with the County Recorder, are a lien against said property, but not yet payable and said bond has been duly approved by said Board of Supervisors.

Dated this 12th day of July, 1959.

G. A. PEQUEGNAT
County Clerk and ex-officio
Clerk of the Board of Super-
visors.

By *J. F. Davidson* Deputy

DIRECTOR OF PUBLIC WORKS CERTIFICATE

I hereby certify that I have examined the within map; that the subdivision shown hereon is substantially the same as it appeared on the tentative map and any approved alterations thereof; that all provisions of Chapter 128 (Subdivision Map Act) Statutes of California, 1943, and of Ordinance No. 1328 of the City of Riverside, California, and all amendments thereto have been complied with; that plans and specifications for drains, drainage, sewer and drainage works sufficient to protect all lots in said subdivision from flood or overflow have been approved by me; that all easements for sewers shown on said map are correct in form and contents and are approved; and I am satisfied that this map is technically correct.

Dated this 7th day of July, 1959.

DIRECTOR OF PUBLIC WORKS

J. F. Davidson

COUNTY TAX COLLECTORS CERTIFICATE

I hereby certify that according to the records of this office as of this date, there are no liens against the property shown on the within map for unpaid State, County or local taxes or special assessments collected as taxes, except taxes and special assessments now a lien but not yet payable which are estimated to be \$6000.00.

Dated this 24th day of June, 1959.

COUNTY TAX COLLECTOR, DONNA M. BOUER

By *W. H. Strader* Deputy

STREET SUPERINTENDENT'S CERTIFICATE

I hereby certify that according to the records of this office, the property shown on this map is not subject to any special assessments which have not been paid in full.

Dated this 24th day of June, 1959.

R. J. Davidson
Street Superintendent

STATE OF CALIFORNIA
COUNTY OF RIVERSIDE J.S.S.

On JUNE 29, 1959, 1959, before me, the undersigned, a Notary Public in and for said County and State, personally appeared R. H. WALTER known to me to be the president, and U. L. SIMPSON known to me to be the Secretary of SUN GOLD, INC., the corporation that executed the within instrument and known to me to be the persons who executed the same on behalf of the corporation therein named, and acknowledged to me that such corporation executed the same.

WITNESS my hand and official seal.

Shirley A. Brundage
Notary Public in and for said County and State

My commission expires JAN 20, 1963.

OWNERS CERTIFICATE

We hereby certify that we are the owners of or have some right, title or interest in the land included in the subdivision shown on the annexed map consisting of two (2) sheets; that we are the only persons whose consent is necessary to pass a clear title to said land and we hereby consent to the making of said map and subdivision as shown within the colored border lines and we hereby offer for dedication for public use, lots "A" to "N" inclusive for street purposes and for the construction and maintenance of all public utilities, the five, five by twenty-five foot easements shown by dashed lines and designated as "S.P.U.E." and "5'x25' P.U.E.", and for construction and maintenance of sewer and drain lines the 5' and 10' sewer and drainage easements, and further, the undersigned owners, our successors and assigns in interest, hereby release and relinquish to the City of Riverside, a Municipal Corporation, any and all abutters rights, including access rights, appurtenant to lots 185, 189, 190, 191, 192, 207, 208, 218, 219, 220, and 221 as shown on the annexed map, on, over, and across that portion of FAIRVIEW AVENUE, not abutting the Gage Canal adjoining lots 182 to 185 both inclusive on the Southeast. In the event that any change of alignment or width of said FAIRVIEW AVENUE adjoining lots 185, 189, 190, 191, 192, 207, 208, 218, 219, 220, and 221 results in the vacating of FAIRVIEW AVENUE, adjoining said lots 185, 189, 190, 191, 192, 207, 208, 218, 219, 220, and 221, then such vacation proceedings shall automatically terminate the rights hereby released and relinquished, as to the portion of FAIRVIEW AVENUE so vacated, and said rights shall again become appurtenant to the lots adjoining said vacated portion.

SUN GOLD, INC., a Corporation

By *R. H. Walter* President

By *U. L. Simpson* Secretary

CITY CLERKS CERTIFICATE

I, U. L. Simpson, City Clerk of the City of Riverside, California, hereby certify that an undertaking satisfactory to the Council of said City guaranteeing the construction of required street improvements in this subdivision was approved and filed in my office prior to the final acceptance of this subdivision map.

IN WITNESS WHEREOF, I have hereunto set my hand and affixed the official seal of the City of Riverside, State of California, this 7th day of July, 1959.

U. L. Simpson
City Clerk of the City of Riverside, California

RESOLVED

That this map consisting of two (2) sheets, be, and the same is hereby accepted as the official map of "VICTORIA GROVES UNIT NO. 6" and the streets and easements are hereby accepted as public streets and easements and the City Clerk is hereby authorized and directed to attest said map by signing her name thereto as City Clerk of the City of Riverside, California and to affix the official seal of said City thereto.

I hereby certify that the foregoing resolution was adopted by the Mayor and Council of the City of Riverside this 7th day of July, 1959.

U. L. Simpson
City Clerk of the City of Riverside, California

VICTORIA GROVES NO 61-954

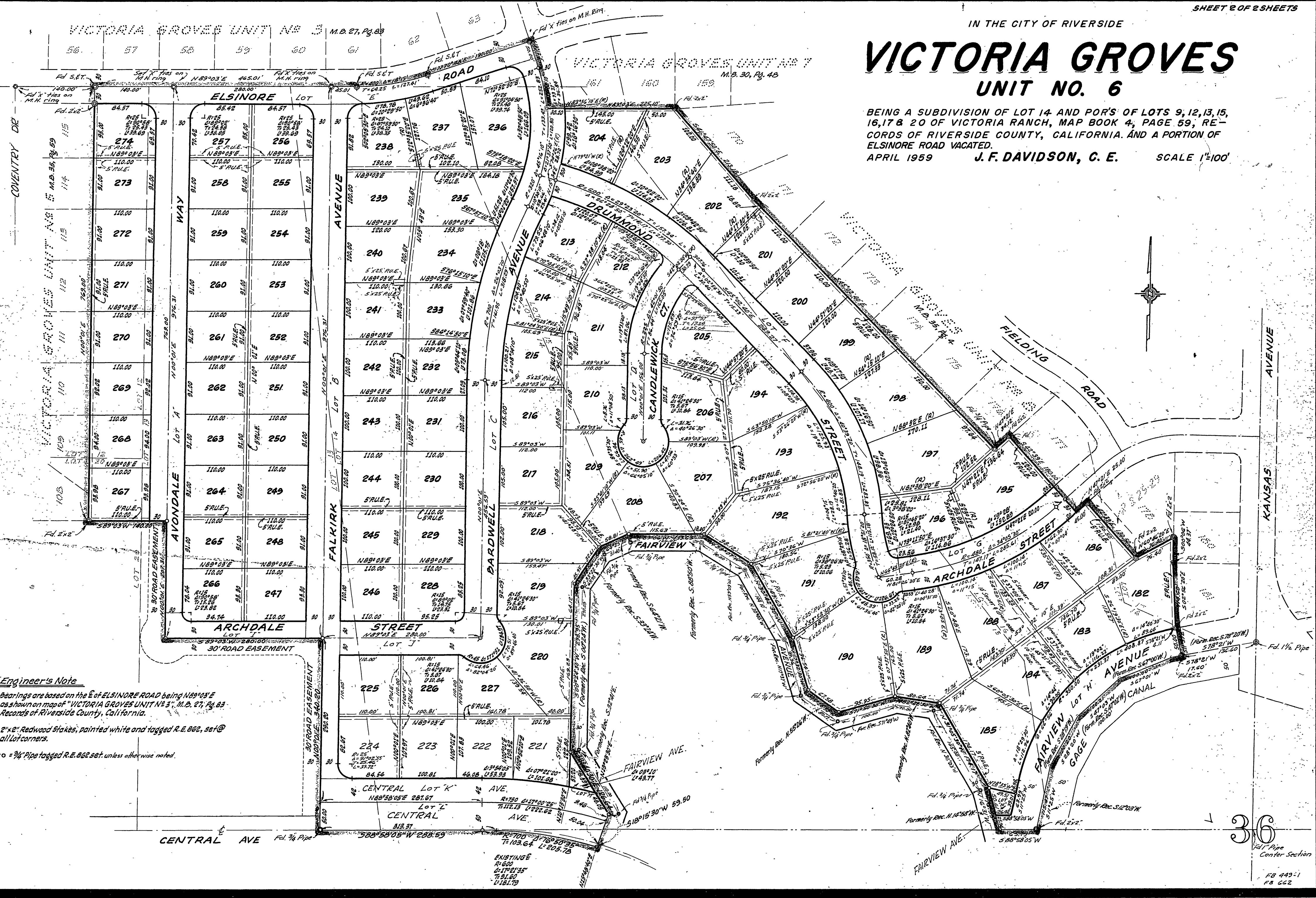
M.B. 37/86

37/86 1954 M.B. 37 VICTORIA GROVES

IN THE CITY OF RIVERSIDE

VICTORIA GROVES UNIT NO. 6

BEING A SUBDIVISION OF LOT 14 AND PORTS OF LOTS 9, 12, 13, 15, 16, 17 & 20 OF VICTORIA RANCH, MAP BOOK 4, PAGE 59, RECORDS OF RIVERSIDE COUNTY, CALIFORNIA. AND A PORTION OF ELSINORE ROAD VACATED.
APRIL 1959 J. F. DAVIDSON, C. E. SCALE 1"=100'



Engineer's Note

Bearings are based on the E of ELSINORE ROAD being N89°03'E as shown on map of "VICTORIA GROVES UNIT NO. 3", M.B. 27, Pg. 83, Records of Riverside County, California.

2"x2" Redwood Stakes, painted white and tagged R.E. 862, set @ all lot corners.

o = 3/4" Pipe tagged R.E. 862 set unless otherwise noted.

36

Fd. 1 1/2" Pipe
Center Section

FB 449-1
FB 662