

IN THE COUNTY OF RIVERSIDE

# GRANGE DEVELOPMENT

BEING A SUBDIVISION OF A PORTION OF BLOCKS 4, 5, AND ALL OF LOT "F" OF LA SIERRA HEIGHTS TRACT NO. 3, MAP BOOK 8, PAGE 27, RECORDS OF RIVERSIDE COUNTY, CALIF. ALSO A PORTION OF THE N.W. 1/4 OF SECTION 13 AND A PORTION OF THE N.E. 1/4 OF SECTION 14, T. 3 S., R. 6 W., AS SHOWN ON MAP OF RANCHO LA SIERRA, M.B. 6, PG. 70, REC. RIVERSIDE COUNTY, CALIF.

APRIL 1959

J. F. DAVIDSON, C. E. —

SCALE 1"=100'

**FILED**  
On July 23, 1959

At 8:10 P. M.

JACK A. ROSS  
County Recorder

By O. A. [Signature]  
Deputy

Fee \$ 7.00

No

Filed by County Clerk.

We hereby certify that we are the owners or have some right, title or interest in the land included within the subdivision shown hereon, that we are the only persons whose consent is necessary to pass a clear title to said land and we hereby consent to the making and recording of said map and subdivision as shown within the colored border line and we hereby offer for dedication for public use Lots "A" to "I" inclusive for street purposes and for the construction and maintenance of all public utilities the five foot and five by twenty-five foot easements shown by dashed lines and designated as "S.R.U.E." and "5x25' ANG. EASE."

GRANGE DEVELOPMENT INC., a corporation

By Dolph Granger President By Blaine B. Quick Secretary

BURROW ESCROW CO., a corporation, trustee

By C. D. Burrow President By Vera Bush Secretary

STATE OF CALIFORNIA }  
COUNTY OF ORANGE } S.S.

On JULY 13<sup>TH</sup>, 1959, before me, the undersigned, a Notary Public in and for said County and State, personally appeared DOLPH GRANGER and BLAINE B. QUICK, known to me to be the President and Secretary of GRANGE DEVELOPMENT INC. the Corporation that executed the within instrument and known to me to be the persons who executed the same on behalf of the Corporation therein named, and acknowledged to me that such Corporation executed the same. WITNESS my hand and official seal.

Vera Bush  
Notary Public in and for said County and State

My commission expires 3-19-60

STATE OF CALIFORNIA }  
COUNTY OF ORANGE } S.S.

On JULY 13<sup>TH</sup>, 1959, before me the undersigned, a Notary Public in and for said County and State, personally appeared C. D. BURROW and VERA BUSH, known to me to be the President and Secretary of BURROW ESCROW CO. the Corporation that executed the within instrument and known to me to be the persons who executed the same on behalf of the Corporation therein named, and acknowledged to me that such Corporation executed the same. WITNESS my hand and official seal.

Alfred B. [Signature]  
Notary Public in and for said County and State

My commission expires 12-17-62

I hereby certify that I am a Registered Civil Engineer of the State of California and that this map consisting of two (2) sheets correctly represents a survey made under my supervision during April of 1959; that all monuments shown hereon actually exist and their positions are correctly shown.

J. F. Davidson  
Registered Engineer No. 862

I hereby certify that a bond in the sum of \$ 2200.<sup>00</sup> has been executed and filed with the Board of Supervisors of the County of Riverside, California, conditioned upon the payment of taxes, State, County, Municipal or local and all special assessments collected as taxes which at the time of filing of the annexed map with the County Recorder are a lien against said property but not yet payable and said bond has been duly approved by said Board of Supervisors.

Dated July 20<sup>th</sup>, 1959.

G. A. PEQUEGNAT  
County Clerk and ex-officio  
Clerk of the Board of Supervisors  
By J. [Signature] Deputy

I hereby certify that according to the records of this office as of this date, there are no liens against the property shown on the within map for unpaid State, County or local taxes or special assessments collected as taxes, except taxes and special assessments now a lien but not yet payable which are estimated to be \$ 2200.<sup>00</sup>

Dated July 17, 1959.

DONNA M. BOUER County Tax Collector  
By M. B. [Signature] Deputy

Approved by the Riverside County Planning Commission in accordance with the requirements of law in a duly authorized meeting held July 16, 1959.

Paul J. [Signature] Secretary  
Riverside County Planning Commission

I hereby certify that I have examined the within annexed map; that the subdivision shown thereon is substantially the same as it appeared on the tentative map and any approved alterations thereof; that all provisions of Chapter 12B (Subdivision Map Act) Statutes of California, 1943, and Riverside County Ordinance No. 336 have been complied with and I am satisfied that this map is technically correct.

Dated July 17, 1959.

A. C. KEITH County Surveyor  
By A. C. Keith

The County of Riverside, California, by and through its duly authorized officers hereby approves said final map and accepts the foregoing dedications.

Dated July 20<sup>th</sup>, 1959.

COUNTY OF RIVERSIDE, STATE OF CALIFORNIA  
By [Signature] Chairman of the Board of Supervisors

ATTEST:

G. A. PEQUEGNAT  
County Clerk and ex-officio  
Clerk of the Board of Supervisors

By J. [Signature] Deputy

GRANGE DEVELOPMENT  
MB. 37192 SHEET 1

37192  
MB. 37192 SHEET 1

MB 37/92

# GRANGE DEVELOPMENT

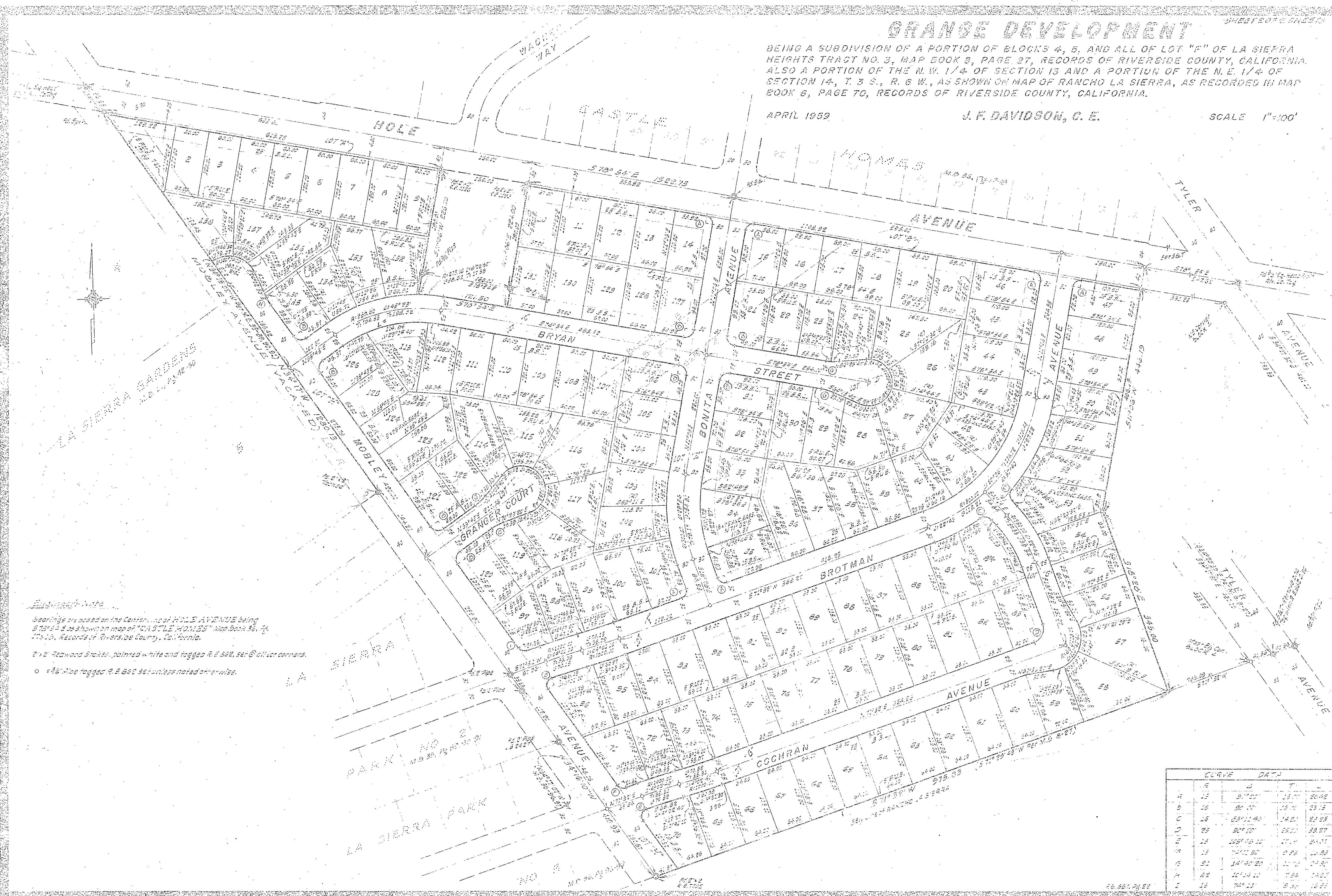
SHEET 2 OF 2 SHEETS

BEING A SUBDIVISION OF A PORTION OF BLOCKS 4, 5, AND ALL OF LOT "F" OF LA SIERRA HEIGHTS TRACT NO. 3, MAP BOOK 3, PAGE 27, RECORDS OF RIVERSIDE COUNTY, CALIFORNIA, ALSO A PORTION OF THE N.W. 1/4 OF SECTION 13 AND A PORTION OF THE N.E. 1/4 OF SECTION 14, T. 3 S., R. 6 W., AS SHOWN ON MAP OF RANCHO LA SIERRA, AS RECORDED IN MAP BOOK 6, PAGE 70, RECORDS OF RIVERSIDE COUNTY, CALIFORNIA.

APRIL 1952

J. F. DAVIDSON, C. E.

SCALE 1"=100'



**Engineering Note**  
 Bearings are based on the centerline of HOLE AVENUE being S 73° 54' E as shown on map of "CASTLE HOMES" Map Book 36, P. 74, T. 3 S., R. 6 W., Records of Riverside County, California.  
 2" x 2" Redwood Bricks, painted white and tagged R.E. 582, set @ all lot corners.  
 1/4" Pipe tagged R.E. 582 set unless noted otherwise.

CURVE	DATA
1	15 51° 00'
2	16 80° 00'
3	16 65° 11' 40"
4	15 80° 00'
5	15 105° 10' 10"
6	15 74° 00' 00"
7	15 14° 00' 00"
8	15 10° 14' 10"
9	15 74° 11'

GRANGE DEVELOPMENT  
 M.B. 37/93 SHEET 2

M.B. 37/93  
 SHEET 2 OF 2

MB 37/93