

38/3
HALLMARK DEVELOPMENT
SHEET 1
M.B. 38/3

HALLMARK DEVELOPMENT

BEING A SUBDIVISION OF A PORTION OF LOTS 6 AND 8, BLOCK 60 OF TRACT NO. 2 LA SIERRA HEIGHTS, M.B. 7/66, RECORDS OF RIVERSIDE COUNTY, CALIFORNIA

JUNE 1959

SCALE 1"=100'

J.F. DAVIDSON, C.E.

FILED
On Aug. 11, 1959

At 4:15 P.M.

JACKA ROSS
County Recorder

By O.A. Wheat
Deputy

Fee \$7.00

No.

Filed by County Clerk.

We hereby certify that we are the owners of or have some right, title or interest in the land included within the subdivision shown hereon, that we are the only persons whose consent is necessary to pass a clear title to said land and we hereby consent to the making and recording of said map and subdivision as shown within the colored border line and we hereby offer for dedication for public use Lots "A" to "F" inclusive for street purposes and for the construction and maintenance of all public utilities the five foot easements shown by dashed lines and designated as "S.P.U.E."

TYLER HOLE LAND CORP, a corporation
By Dolph Granger President By Blaime B. Quick Secretary

I hereby certify that I am a Registered Civil Engineer of the State of California and that this map consisting of two (2) sheets correctly represents a survey made under my supervision during June of 1959, that all monuments shown hereon actually exist and their positions are correctly shown

J.F. Davidson
Registered Engineer No. 862

I hereby certify that I have examined the within annexed map; that the subdivision shown thereon is substantially the same as it appeared on the tentative map and any approved alterations thereof; that all provisions of Chapter 28 (Subdivision Map Act) Statutes of California, 1943, and Riverside County Ordinance No. 336 have been complied with and I am satisfied that this map is technically correct.

Dated August 7, 1959. A.C. KEITH County Surveyor
By E.T. Worsley Deputy

I hereby certify that a bond in the sum of \$2000.00 has been executed and filed with the Board of Supervisors of this County of Riverside, California, conditioned upon the payment of all taxes, State, County, Municipal or Local and all special assessments collected as taxes which at the time of filing of the annexed map with the County Recorder are a lien against said property but not yet payable and said bond has been duly approved by said Board of Supervisors.

Dated August 10, 1959. J.A. PEQUEGNAT
County Clerk and ex-officio
Clerk of the Board of Supervisors
By J. Shayer Deputy

The County of Riverside, State of California, by and through its duly authorized officers here by approves said final map and accepts the foregoing dedications.
Dated August 10, 1959. COUNTY OF RIVERSIDE, STATE OF CALIF.
By J. Shayer
Chairman of the Board of Supervisors

STATE OF CALIFORNIA
COUNTY OF RIVERSIDE

On August 7, 1959, before me, the undersigned, a Notary Public in and for said County and State, personally appeared DOLPH GRANGER and BLAIME B. QUICK, known to me to be the President and Secretary of TYLER HOLE LAND CORP. the corporation that executed the within instrument and known to me to be the persons who executed the same on behalf of the corporation therein named, and I acknowledged to me that such corporation executed the same.

WITNESS my hand and official seal.
Edgar B. Pequegnat
Notary Public in and for said County and State
My commission expires 2-25-62.

I hereby certify that according to the records of this County of Riverside, there are no liens against the property shown on the within map for unpaid State, County, or Local taxes or special assessments collected as taxes, except taxes on special assessments now due but not yet payable which are estimated to be \$2000.00.
Dated August 4, 1959. DONNA M. BOJER County Tax Collector
By Una H. Lamb Deputy

ATTEST
G.A. PEQUEGNAT
County Clerk and ex-officio
Clerk of the Board of Supervisors
By J. Shayer Deputy

STATE OF CALIFORNIA
COUNTY OF ORANGE

On August 7, 1959, before me, the undersigned, a Notary Public in and for said County and State, personally appeared C.D. BURROW and VERA BUSH, known to me to be the President and Secretary of BURROW SCROW CO. the corporation that executed the within instrument and known to me to be the persons who executed the same on behalf of the corporation therein named, and I acknowledged to me that such corporation executed the same.

WITNESS my hand official seal.
Notary Public in and for said County and State
My commission expires

Approved by the Riverside County Planning Commission in accordance with the requirements of law in a duly authorized meeting held August 7, 1959.
Harold J. Evensen Secretary
Riverside County Planning Commission

M.B. 38/3

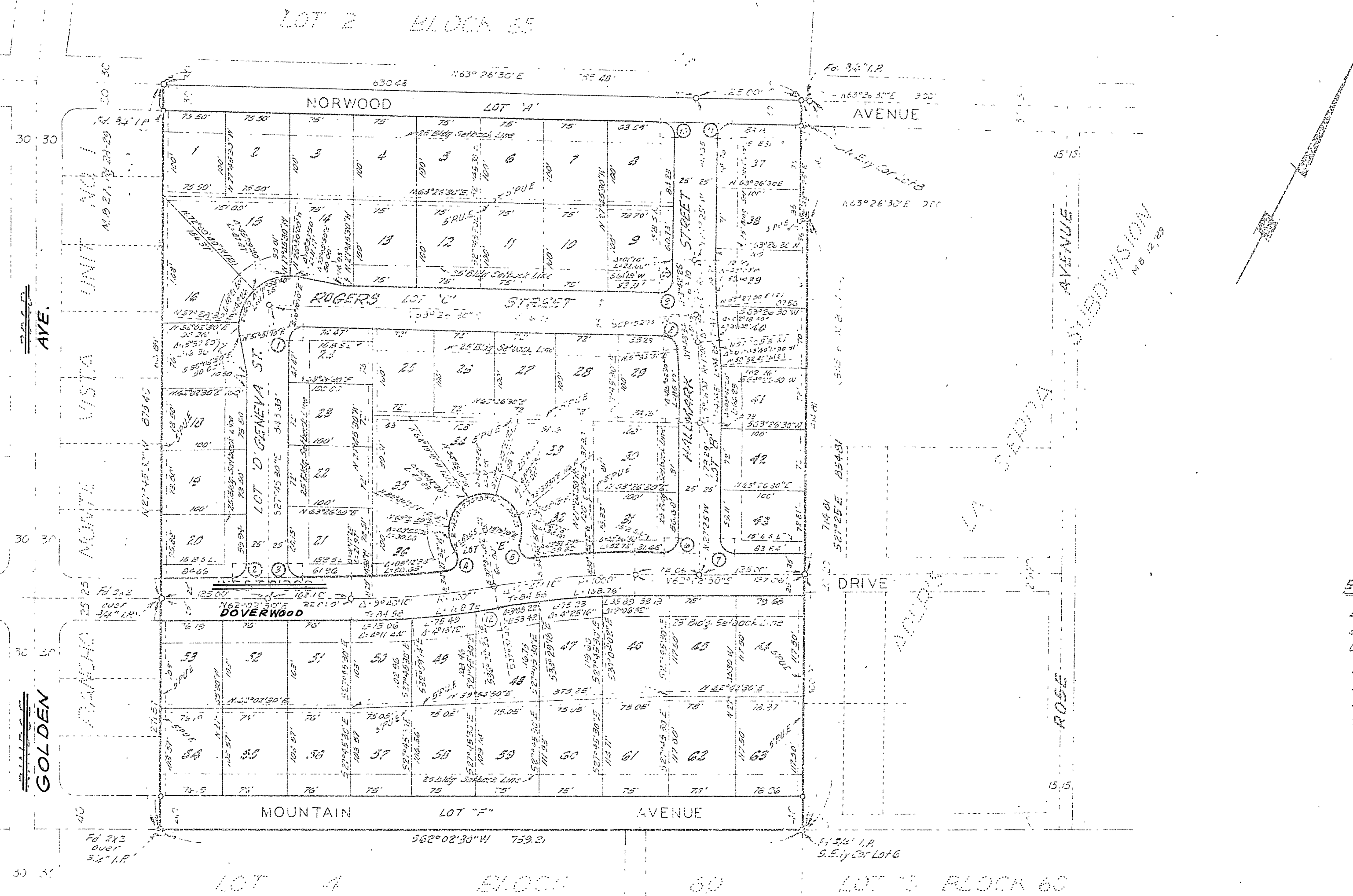
HALLMARK DEVELOPMENT

BEING A SUBDIVISION OF A PORTION OF LOTS 6 AND 8, BLOCK 60 OF TRACT NO. 2 LA SIERRA HEIGHTS, M.B. 7/56, RECORDS OF RIVERSIDE COUNTY, CALIFORNIA

JUNE 1959

J.F. DAVIDSON, C.E.

SCALE 1" = 100'



CURVE DATA PROPERTY RETURNS				
No	A	B	T	L
1	91°12'	25'	25.52'	32.79'
2	83°48'	15'	15.91'	25.03'
3	90°12'	15'	14.06'	25.14'
4	117°06'28"	16'	26.16'	32.70'
5	114°06'04"	16'	38.69'	31.86'
6	85°57'36"	16'	15.85'	23.15'
7	93°23'36"	16'	16.15'	26.28'
8	94°02'	16'	16.15'	23.15'
9	52°07'30"	16'	16.60'	23.73'
10	39°08'30"	16'	15.75'	24.89'
11	92°51'30"	16'	15.24'	25.27'
12	91°12'	10.25'		22.43'

ENGINEER'S NOTE

Bearings are used on the Center line of Norwood Avenue as being N 63° 26' 30" E as shown on map of "RANCHO MONTE VISTA UNIT No. 1, M.B. 27/28-29 (Rec.) of Riverside County, California. Set 2x2 Redwood Stakes printed white and tagged R.E. 862 at all Lot corners unless otherwise noted. Set 3/4" I.P. shown - unless otherwise noted, 2" I.P. are tagged R.E. 862.

M.B. 38/4
HALLMARK DEV.

HALLMARK DEVELOPMENT
SHEET 2
M.B. 38/4

MB 38/4