

38
M.B. 38/88

IN SEC. 3, T. 3 S., R. 4 W., S. B. B. & M.

SHERWOOD HIGHLANDS - UNIT NO. 1

BEING A SUBDIVISION OF A PORTION OF LOTS 31
& 32 OF TRACT NO. TWELVE - M.B. 10, PG. 7 & 8, RECORDS
OF RIVERSIDE COUNTY, STATE OF CALIFORNIA
MAY, 1959

SCALE: 1" = 100'

J.F. DAVIDSON, C.E.

FILED
On Dec. 1, 1959

At 10:10 A.M.

JACK A. ROSS

County Recorder

By O. A. F. Neal

Deputy

Fee \$5.00

Filed by County Clerk

We hereby certify that we are the owners of or have some right, title or interest in the land included within the subdivision shown hereon, that we are the only persons whose consent is necessary to pass clear title to said land, and we hereby consent to the making and recording of said map and subdivision as shown within the colored border line and we hereby offer for dedication for public use for construction and maintenance of all public utilities, the five foot easements shown by broken lines and designated as "R.U.E.", and Lots "A" and "B" for street purposes

FRANK C. SHELDON, INC. a Corp.

Frank Sheldon President
E. M. Stevens Secretary

I hereby certify that I am a Registered Civil Engineer of the State of California and that this map consisting of one (1) sheet correctly represents a survey made under my supervision during June of 1959; that all monuments shown hereon actually exist and their positions are correctly shown

J. F. Davidson
Registered Engineer - No. 862

Approved by the Riverside County Planning Commission in accordance with the requirements of law in a duly authorized meeting held the 20th day of November, 1959.

Karen J. Evensen Secretary
Riverside County Planning Commission

I hereby certify that I have examined this map and have found it to be substantially the same as it appeared on the tentative map and any approved alterations thereof; that all provisions of State and County laws have been complied with, and I am satisfied that this map is technically correct.

Dated November 25, 1959

A.C. KEITH County Surveyor

By C. T. Worsley Deputy

Thereby certify that a bond in the sum of \$_____ has been executed and filed with the Board of Supervisors of the County of Riverside, California, conditioned upon the payment of all taxes, State, County, Municipal or local taxes and all special assessments collected as taxes which at the time of filing of the annexed map with the County Recorder are a lien against said property but not yet payable and said bond has been duly approved by said Board of Supervisors.

Dated _____, 1959

G. A. PEQUEGNAT
County Clerk and ex-officio
Clerk of the Board of Supervisors

By _____ Deputy

STATE OF CALIFORNIA }
COUNTY OF RIVERSIDE } S.S.

On NOV. 19th, 1959, before the undersigned, a Notary Public in and for said County and State, personally appeared FRANK C. SHELDON, and E. M. STEVENS, known to me to be the President and Secretary of FRANK C. SHELDON, INC. the Corporation that executed the within instrument, and known to me to be the persons who executed the within instrument on behalf of the Corporation therein named, and acknowledged to me that such Corporation executed the within instrument pursuant to its by-laws or a resolution of its board of directors.

Witness my hand and official seal.

G. A. Pequegnat
Notary Public in and for said County & State

I hereby certify that according to the records of this office, as of this date, there are no liens against the property shown on the annexed map for unpaid State, County or Municipal taxes, or special assessments collected as taxes.

Dated 1st, 1959

DONNA M. BOUER County Tax Collector

By _____ Deputy

Engineer's Note

Bearings are based on the Center Line of EUCALYPTUS AVENUE being $S89^{\circ}25'W$ as shown on map of "CLARKE-EDGEMONT TRACT" Map Book 23, Page 14, Records of Riverside County, California

2"x2" Redwood Stakes, painted white and tagged R.E. 862, set @ all Lot corners.

o = 3/4" Pipe tagged R.E. 862 set unless noted otherwise.

The County of Riverside, State of California, by and through its duly authorized officers, hereby approves this final map of "SHERWOOD HIGHLANDS" and accepts the foregoing dedication.

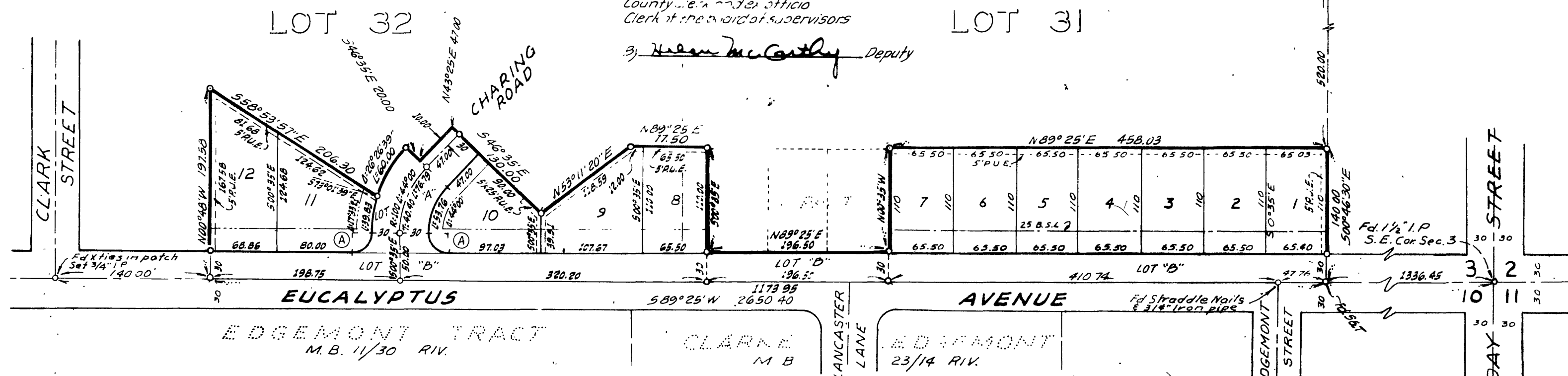
Dated November 30, 1959

COUNTY OF RIVERSIDE, STATE OF CALIFORNIA

By G. A. Pequegnat
Chairman of the Board of Supervisors

ATTEST
G. A. PEQUEGNAT
County Clerk and ex-officio
Clerk of the Board of Supervisors

By Karen J. Evensen Deputy



RETURN DATA	
1	2
3	4

M.B. 38/88