

M.B. 39/55  
VIEW PARK TRACT  
1971

39/55

IN THE CITY OF RIVERSIDE

SHEET 1 OF 2 SHEETS

# VIEW PARK TRACT

UNIT NO. 1

BEING A SUBDIVISION OF A PORTION OF THE S.1/2 OF THE SW.1/4 OF SECTION 32, T.2 S., R.5 W., S.B.B.&M. IN THE CITY OF RIVERSIDE, CALIFORNIA.

SEPT. 1959

BY  
ALBERT A. WEBB ASSOCIATES  
CIVIL ENGINEERS

SCALE: 1"=100'

**FILED**  
on Feb. 24 1960

At 2:00 P. M.

JACK A. ROSS

County Recorder

By O.A. Great

Deputy

Fee \$7.00

No. 100110

By Security Title Ins. Co.

We hereby certify that we are the owners of or have some right, title or interest in the land included within the subdivision shown hereon, that we are the only persons whose consent is necessary to pass a clear title to said land; that we hereby consent to the making and filing of said subdivision and map as shown within the colored border line, and we hereby offer for dedication to public use for street purposes Lots A, B, & C and for construction and maintenance of Public Utilities, the five foot and ten foot public utility easements shown by dashed lines and designated as "5' P.U.E." & "10' P.U.E." and further the undersigned owners, our successors, and assigns in interest, hereby release and relinquish to the City of Riverside, a Municipal corporation, any and all abutters rights, including access rights appurtenant to Lots 33, 34, 35 & 36 as shown on the annexed map, on, over and across Lot C (RIVER ROAD PARKWAY), adjoining said Lots 33, 34, 35, and 36. If any change of alignment or width of such highway results in the vacation of any part thereof within this subdivision, such vacation terminates the above dedication as to the part vacated.

MERCURY BUILDERS, INC., a corporation  
Robert E. Blau Sec. Arnold W. Lyman Pres.  
SECURITY TITLE INSURANCE Co., a corporation, Trustee  
Robert E. Blau Vice-Pres. Arnold W. Lyman Ass't. Sec.

I hereby certify that I am a Registered Civil Engineer of the State of California, and that this map consisting of two (2) sheets, correctly represents a survey made under my supervision during Sept 1959; that all monuments shown hereon actually exist and their positions are correctly shown or shall be in position not later than May 1960.

JAN 21, 1960 Evel N. Waller  
Registered Civil Engineer No. 9876

RESOLVED: That this map consisting of two (2) sheets, be and the same is hereby accepted as the official map of VIEW PARK Tr. UNIT No 1 that the streets and public utility, easements are hereby accepted as public streets and public utility easements, and the City clerk is hereby authorized and directed to attest said map by signing her name thereto as City clerk of the City of Riverside, California, and to affix the official seal of said City thereto

I hereby certify that the foregoing resolution was adopted by the Mayor and Council of the City of Riverside this 23<sup>rd</sup> day of Feb. 1960.

Virginia J. Strohecker  
City Clerk of City of Riverside, California

I hereby certify that the subdivider named on this map has deposited with the Water Department of the City of Riverside sufficient funds to cover the cost of installing all necessary firehydrants together with all water mains and laterals to the curb line on all streets shown on said map; and that all Public Utility Easements shown on this map are sufficient for all requirements of the Electric Light and Water Departments of the City of Riverside and for the department of Public Utilities of said City.

DATED February 15<sup>th</sup> 1960 E.C. Ross by Don Campbell  
Superintendent of Light and Water  
Departments of City of Riverside

State of California } ss.  
County of Riverside }

I, Virginia J. Strohecker, City Clerk of City of Riverside, California, hereby certify that an undertaking satisfactory to the Council of said City, guaranteeing the construction of required street improvements in this subdivision was approved and filed in my office prior to the final acceptance of this subdivision map.

IN WITNESS WHEREOF I have hereunto set my hand and affixed the official seal of the City of Riverside, California this 23<sup>rd</sup> day of Feb. 1960

Virginia J. Strohecker  
City Clerk of the City of Riverside, California

I hereby certify that according to the records of this office as of this date, the property shown on this map is not subject to any special assessments, bonds and/or liens which have not been paid in full. This certificate does not include any special assessments, the bonds of which have not become a lien upon said property.

Dated this 22<sup>nd</sup> day of JAN. 1960 K.L. Wright  
City Treasurer

I hereby certify that according to the records of this office as of this date there are no liens against the property shown on the within map for unpaid state, county or local taxes or special assessments collected as taxes, except taxes and special assessments now a lien, but not yet payable, which are estimated at \$

Dated this 15 day of February 1960

DONNA M. BOUER  
County Tax Collector  
By: Donna M. Bouer  
Deputy

State of California } s.s.  
County of RIVERSIDE }

On this 21<sup>st</sup> day of JAN 1960, before me, the undersigned, a Notary Public in and for said County and State, personally appeared HERBERT FORD and RONALD FREEMAN known to me to be the PRES and SECY respectively of the corporation that executed the within instrument and they acknowledged to me that such corporation executed the same.

WITNESS my hand and official seal.

Dorothy Merritt  
Notary Public in and for  
said County and State  
DOROTHY MERRITT  
MY COMMISSION EXPIRES AUG 13-1961

I hereby certify that a bond in the sum of \$ has been filed with the Board of Supervisors of the County of Riverside, State of California, conditioned on payment of all taxes, state, county or local, and special assessments collected as taxes, which at the time of filing of this map with the County Recorder are a lien against said property, but not yet payable, and said bond has been duly approved by said Board of Supervisors.

Dated this day of 1960

County Clerk and Ex-officio Clerk  
of the Board of Supervisors

By: Deputy

I hereby certify that according to the records of this office, the property shown on this map is not subject to any special assessments which have not been paid in full.

Dated JAN 22, 1960 R.M. Lane  
Street Superintendent

I hereby certify that I have examined the within map; that the subdivision shown hereon is substantially the same as it appeared on the tentative map and any approved alteration thereof; that all provisions of chapter 128 (Subdivision Map Act) Statutes of California 1943, and of Ordinance 1328 of the City of Riverside, California, and all amendments thereto have been complied with; that plans and specifications for drains, drainage, sewer and drainage works sufficient to protect all lots in said subdivision from flood or over flow have been approved by me; that all easements for drains shown on said map are correct in form and contents and are approved and I am satisfied that this map is technically correct.

Dated Feb. 18, 1960 W. M. ...  
Director of Public Works

I hereby certify that this map was approved by the Riverside City Planning Commission at its meeting held on the 21<sup>st</sup> day of JANUARY 1960

R. James Thurman  
Planning Director  
City of Riverside

State of California } s.s.  
County of Riverside }

On this 22<sup>nd</sup> day of JAN 1960, before me, the undersigned a Notary Public in and for said County and State personally appeared ROBERT E. BLAU and RONALD W. AYERS known to me to be the VICE PRES and ASST SECY respectively of the corporation that executed the within instrument and known to me to be the persons who executed the same on behalf of the corporation therein named and acknowledged to me that such corporation executed the same, as Trustee.

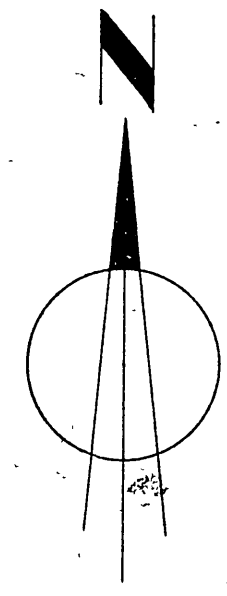
WITNESS my hand and official seal.

Dorothy Merritt  
Notary Public in and for said  
County and State  
My Commission expires AUG 13-1961 DOROTHY MERRITT.

M.B. 39/55

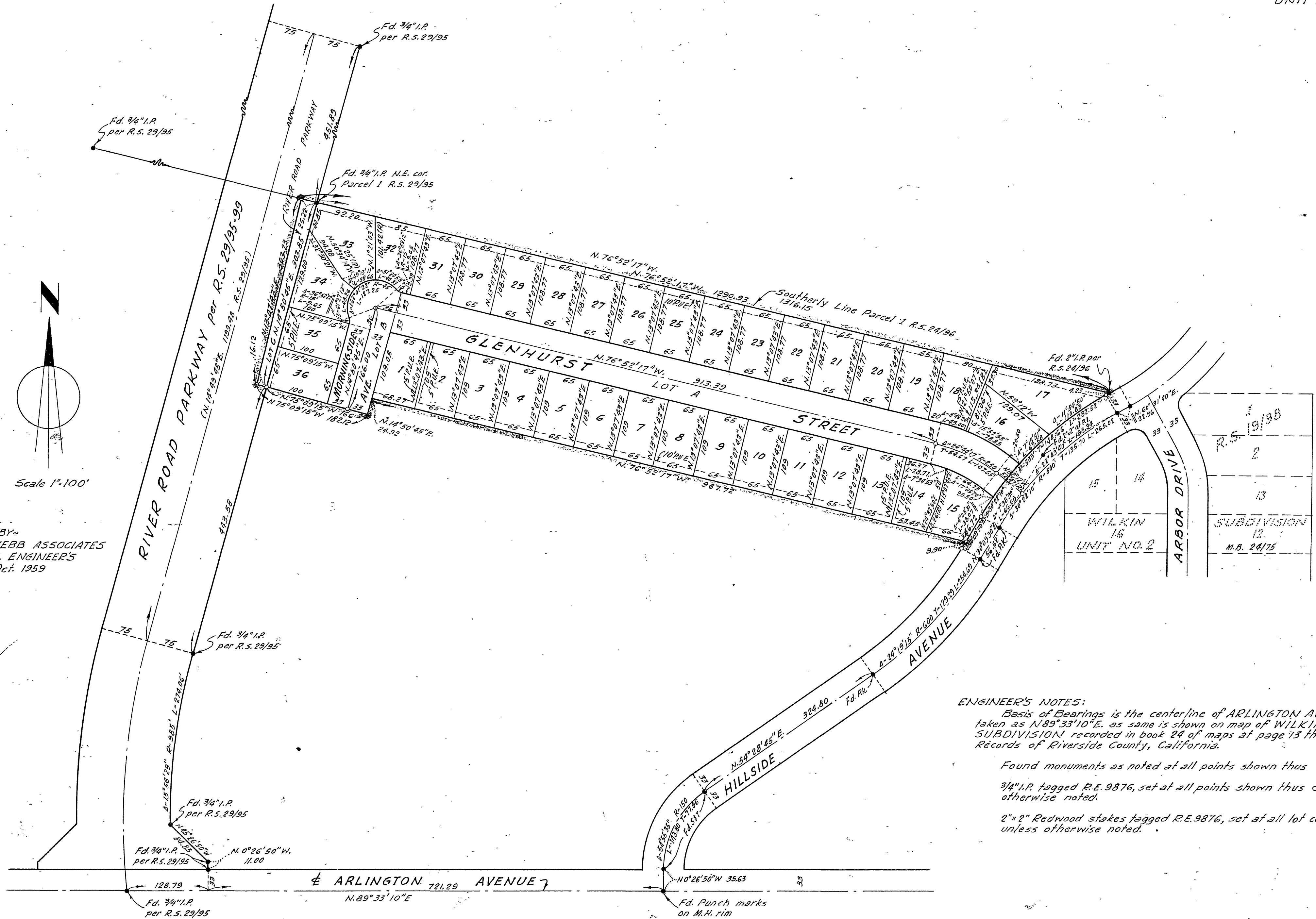
VIEW PARK TRACT 1971

39/55



Scale 1"=100'

BY  
ALBERT A. WEBB ASSOCIATES  
CIVIL ENGINEER'S  
Oct. 1959



ENGINEER'S NOTES:  
Basis of Bearings is the centerline of ARLINGTON AVENUE taken as N. 89° 33' 10" E. as same is shown on map of WILKIN SUBDIVISION recorded in book 24 of maps at page 13 thereof Records of Riverside County, California.  
Found monuments as noted at all points shown thus •  
3/4" I.P. tagged R.E. 9876, set at all points shown thus o unless otherwise noted.  
2" x 2" Redwood stakes tagged R.E. 9876, set at all lot corners, unless otherwise noted.